


# 46 Devon Road, Essex Fells, Essex County, New Jersey, United States, 07021




## Property Summary

 **1** garages

 **4** bedrooms

 **4** bathrooms

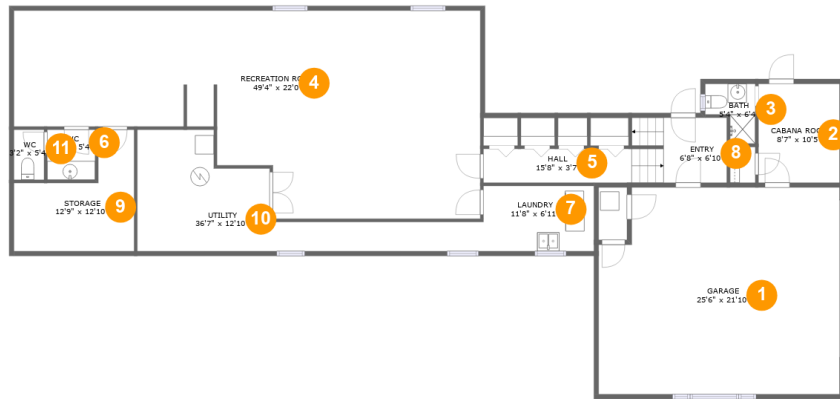
 **1** half baths

 **2** floors

 **4,179** Gross Living Area sqft

 **5,259** total sqft

# 46 Devon Road, Essex Fells, Essex County, New Jersey, United States, 07021



## Room Dimensions

Floor 1

Total sqft: 2361

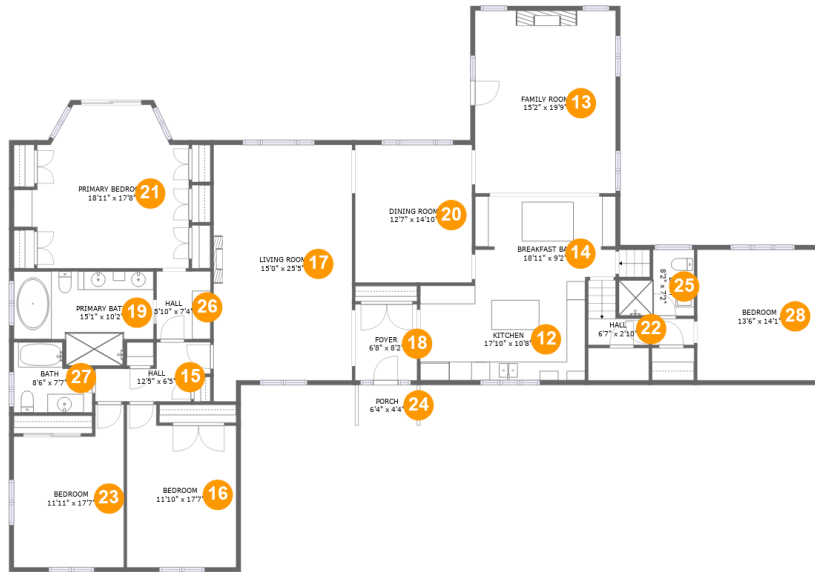
Living area: 1309

#	Room name	Dimensions	Area (sqft)	Counted as Living Area
1	Garage	25'6" x 21'10"	536 sq. ft	No
2	Cabana Room	8'7" x 10'5"	90 sq. ft	Yes
3	Bath	5'4" x 6'4"	26 sq. ft	Yes
4	Recreation Room	49'4" x 22'0"	840 sq. ft	Yes
5	Hall	15'8" x 3'7"	56 sq. ft	Yes
6	Wc	5'1" x 5'4"	27 sq. ft	Yes
7	Laundry	11'8" x 6'11"	81 sq. ft	No
8	Entry	6'8" x 6'10"	68 sq. ft	Yes
9	Storage	12'9" x 12'10"	113 sq. ft	No
10	Utility	36'7" x 12'10"	226 sq. ft	No
11	Wc	3'2" x 5'4"	17 sq. ft	Yes

Scan captured on Wed, 24 Jul 2024 01:08:33 GMT

Information is calculated by CubiCasa technology; deemed highly reliable but not guaranteed.

# 46 Devon Road, Essex Fells, Essex County, New Jersey, United States, 07021



## Room Dimensions

Floor 2

Total sqft: 2898

Living area: 2870

#	Room name	Dimensions	Area (sqft)	Counted as Living Area
12	Kitchen	17'10" x 10'8"	188 sq. ft	Yes
13	Family Room	15'2" x 19'9"	299 sq. ft	Yes
14	Breakfast Bar	18'11" x 9'2"	147 sq. ft	Yes
15	Hall	12'5" x 6'5"	54 sq. ft	Yes
16	Bedroom	11'10" x 17'7"	188 sq. ft	Yes
17	Living Room	15'0" x 25'5"	386 sq. ft	Yes
18	Foyer	6'8" x 8'2"	55 sq. ft	Yes
19	Primary Bath	15'1" x 10'2"	128 sq. ft	Yes
20	Dining Room	12'7" x 14'10"	188 sq. ft	Yes
21	Primary Bedroom	18'11" x 17'8"	274 sq. ft	Yes
22	Hall	6'7" x 2'10"	31 sq. ft	Yes

Scan captured on Wed, 24 Jul 2024 01:08:33 GMT

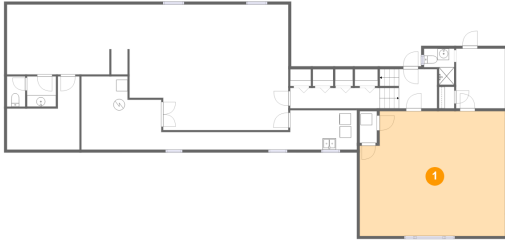
Information is calculated by CubiCasa technology; deemed highly reliable but not guaranteed.

**46 Devon Road, Essex Fells, Essex County, New Jersey, United States, 07021**

#	Room name	Dimensions	Area (sqft)	Counted as Living Area
23	Bedroom	11'11" x 17'7"	178 sq. ft	Yes
24	Porch	6'4" x 4'4"	28 sq. ft	No
25	Bath	8'2" x 7'2"	46 sq. ft	Yes
26	Hall	5'10" x 7'4"	43 sq. ft	Yes
27	Bath	8'6" x 7'7"	55 sq. ft	Yes
28	Bedroom	13'6" x 14'1"	190 sq. ft	Yes

# 46 Devon Road, Essex Fells, Essex County, New Jersey, United States, 07021

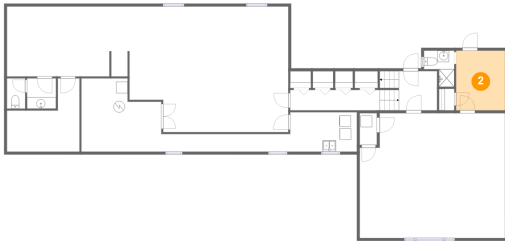
## 1 Floor 1 - Garage



Dimensions: 25'6" x 21'10"  
Area: 536 sq. ft  
Counted as Living Area: No

Heated: No  
Finished: No  
Enclosed: Yes  
Contiguous: Yes  
Permitted: Yes  
Wet Space: No  
Addition: No  
Conversion: No

## 2 Floor 1 - Cabana Room

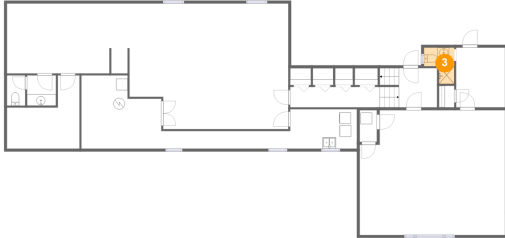


Dimensions: 8'7" x 10'5"  
Area: 90 sq. ft  
Counted as Living Area:  
Yes

Heated: Yes  
Finished: Yes  
Enclosed: Yes  
Contiguous:  
Yes  
Permitted: Yes  
Wet Space: No  
Addition: No  
Conversion: No

# 46 Devon Road, Essex Fells, Essex County, New Jersey, United States, 07021

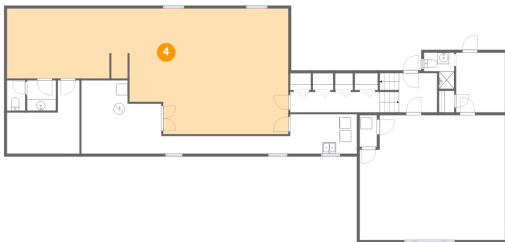
## 3 Floor 1 - Bath



Dimensions: 5'4" x 6'4"  
Area: 26 sq. ft  
Counted as Living Area:  
Yes

Heated: Yes  
Finished: Yes  
Enclosed: Yes  
Contiguous:  
Yes  
Permitted: Yes  
Wet Space: Yes  
Addition: No  
Conversion: No

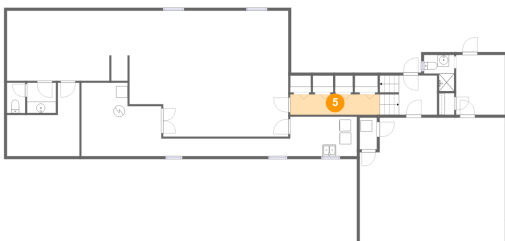
## 4 Floor 1 - Recreation Room



Dimensions: 49'4" x 22'0"  
Area: 840 sq. ft  
Counted as Living Area:  
Yes

Heated: Yes  
Finished: Yes  
Enclosed: Yes  
Contiguous:  
Yes  
Permitted: Yes  
Wet Space: No  
Addition: No  
Conversion: No

## 5 Floor 1 - Hall

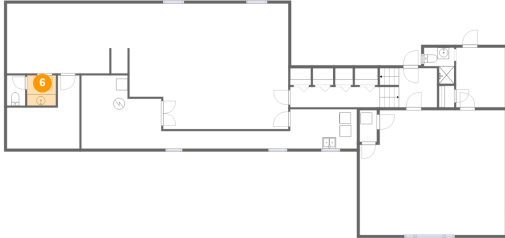


Dimensions: 15'8" x 3'7"  
Area: 56 sq. ft  
Counted as Living Area:  
Yes

Heated: Yes  
Finished: Yes  
Enclosed: Yes  
Contiguous:  
Yes  
Permitted: Yes  
Wet Space: No  
Addition: No  
Conversion: No

# 46 Devon Road, Essex Fells, Essex County, New Jersey, United States, 07021

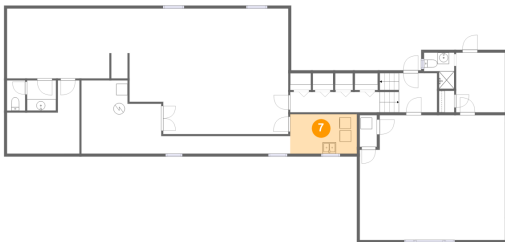
## 6 Floor 1 - Wc



Dimensions: 5'1" x 5'4"  
Area: 27 sq. ft  
Counted as Living Area:  
Yes

Heated: Yes  
Finished: Yes  
Enclosed: Yes  
Contiguous:  
Yes  
Permitted: Yes  
Wet Space: Yes  
Addition: No  
Conversion: No

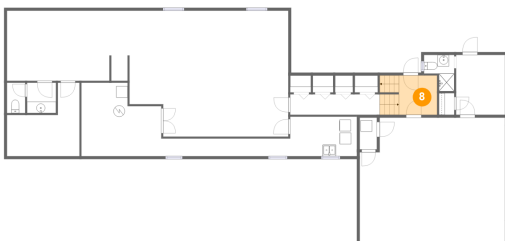
## 7 Floor 1 - Laundry



Dimensions: 11'8" x 6'11"  
Area: 81 sq. ft  
Counted as Living Area: No

Heated: No  
Finished: No  
Enclosed: Yes  
Contiguous: Yes  
Permitted: Yes  
Wet Space: No  
Addition: No  
Conversion: No

## 8 Floor 1 - Entry

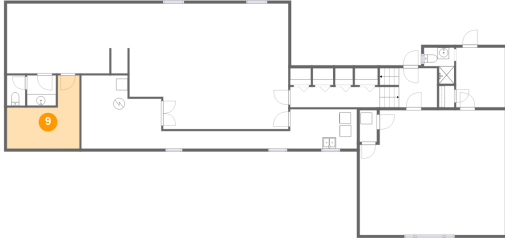


Dimensions: 6'8" x 6'10"  
Area: 68 sq. ft  
Counted as Living Area:  
Yes

Heated: Yes  
Finished: Yes  
Enclosed: Yes  
Contiguous:  
Yes  
Permitted: Yes  
Wet Space: No  
Addition: No  
Conversion: No

# 46 Devon Road, Essex Fells, Essex County, New Jersey, United States, 07021

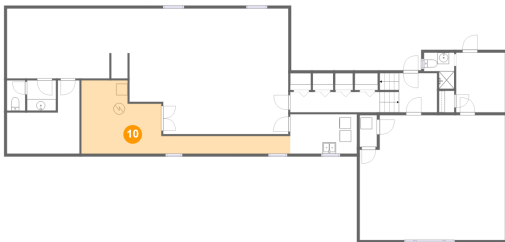
## 9 Floor 1 - Storage



Dimensions: 12'9" x 12'10"  
Area: 113 sq. ft  
Counted as Living Area: No

Heated: No  
Finished: No  
Enclosed: No  
Contiguous: Yes  
Permitted: Yes  
Wet Space: No  
Addition: No  
Conversion: No

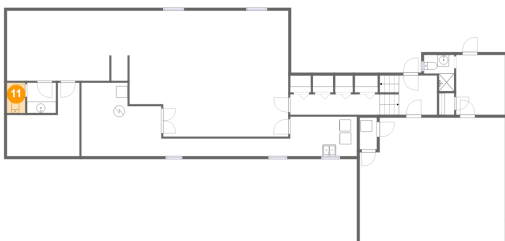
## 10 Floor 1 - Utility



Dimensions: 36'7" x 12'10"  
Area: 226 sq. ft  
Counted as Living Area: No

Heated: No  
Finished: No  
Enclosed: Yes  
Contiguous: Yes  
Permitted: Yes  
Wet Space: No  
Addition: No  
Conversion: No

## 11 Floor 1 - Wc



Dimensions: 3'2" x 5'4"  
Area: 17 sq. ft  
Counted as Living Area: Yes

Heated: Yes  
Finished: Yes  
Enclosed: Yes  
Contiguous: Yes  
Permitted: Yes  
Wet Space: Yes  
Addition: No  
Conversion: No



# 46 Devon Road, Essex Fells, Essex County, New Jersey, United States, 07021

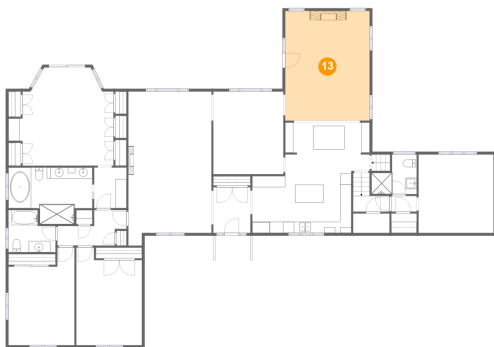
## 12 Floor 2 - Kitchen



Dimensions: 17'10" x 10'8"  
Area: 188 sq. ft  
Counted as Living Area:  
Yes

Heated: Yes  
Finished: Yes  
Enclosed: Yes  
Contiguous:  
Yes  
Permitted: Yes  
Wet Space: No  
Addition: No  
Conversion: No

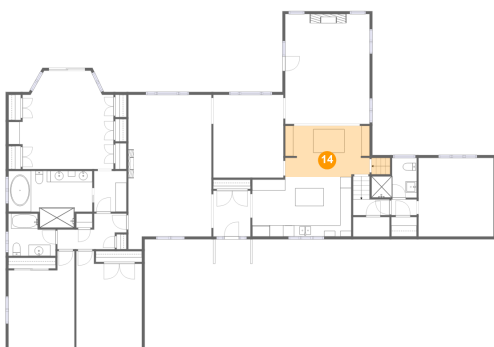
## 13 Floor 2 - Family Room



Dimensions: 15'2" x 19'9"  
Area: 299 sq. ft  
Counted as Living Area:  
Yes

Heated: Yes  
Finished: Yes  
Enclosed: Yes  
Contiguous:  
Yes  
Permitted: Yes  
Wet Space: No  
Addition: No  
Conversion: No

## 14 Floor 2 - Breakfast Bar

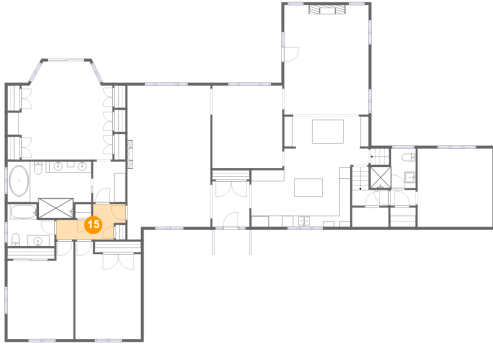


Dimensions: 18'11" x 9'2"  
Area: 147 sq. ft  
Counted as Living Area:  
Yes

Heated: Yes  
Finished: Yes  
Enclosed: Yes  
Contiguous:  
Yes  
Permitted: Yes  
Wet Space: No  
Addition: No  
Conversion: No

# 46 Devon Road, Essex Fells, Essex County, New Jersey, United States, 07021

## 15 Floor 2 - Hall



Dimensions: 12'5" x 6'5"  
Area: 54 sq. ft  
Counted as Living Area:  
Yes

Heated: Yes  
Finished: Yes  
Enclosed: Yes  
Contiguous:  
Yes  
Permitted: Yes  
Wet Space: No  
Addition: No  
Conversion: No

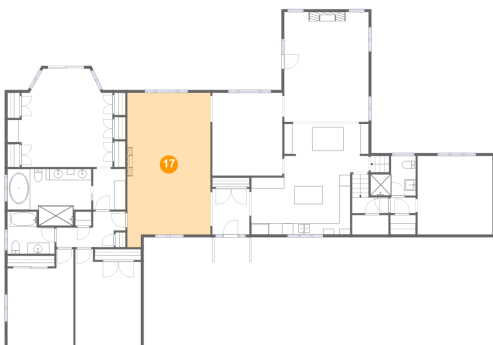
## 16 Floor 2 - Bedroom



Dimensions: 11'10" x 17'7"  
Area: 188 sq. ft  
Counted as Living Area:  
Yes

Heated: Yes  
Finished: Yes  
Enclosed: Yes  
Contiguous:  
Yes  
Permitted: Yes  
Wet Space: No  
Addition: No  
Conversion: No

## 17 Floor 2 - Living Room



Dimensions: 15'0" x 25'5"  
Area: 386 sq. ft  
Counted as Living Area:  
Yes

Heated: Yes  
Finished: Yes  
Enclosed: Yes  
Contiguous:  
Yes  
Permitted: Yes  
Wet Space: No  
Addition: No  
Conversion: No

# 46 Devon Road, Essex Fells, Essex County, New Jersey, United States, 07021

## 18 Floor 2 - Foyer



Dimensions: 6'8" x 8'2"  
Area: 55 sq. ft  
Counted as Living Area:  
Yes

Heated: Yes  
Finished: Yes  
Enclosed: Yes  
Contiguous:  
Yes  
Permitted: Yes  
Wet Space: No  
Addition: No  
Conversion: No

## 19 Floor 2 - Primary Bath



Dimensions: 15'1" x 10'2"  
Area: 128 sq. ft  
Counted as Living Area:  
Yes

Heated: Yes  
Finished: Yes  
Enclosed: Yes  
Contiguous:  
Yes  
Permitted: Yes  
Wet Space: Yes  
Addition: No  
Conversion: No

## 20 Floor 2 - Dining Room



Dimensions: 12'7" x 14'10"  
Area: 188 sq. ft  
Counted as Living Area:  
Yes

Heated: Yes  
Finished: Yes  
Enclosed: Yes  
Contiguous:  
Yes  
Permitted: Yes  
Wet Space: No  
Addition: No  
Conversion: No

# 46 Devon Road, Essex Fells, Essex County, New Jersey, United States, 07021

## 21 Floor 2 - Primary Bedroom



Dimensions: 18'11" x 17'8"  
Area: 274 sq. ft  
Counted as Living Area:  
Yes

Heated: Yes  
Finished: Yes  
Enclosed: Yes  
Contiguous:  
Yes  
Permitted: Yes  
Wet Space: No  
Addition: No  
Conversion: No

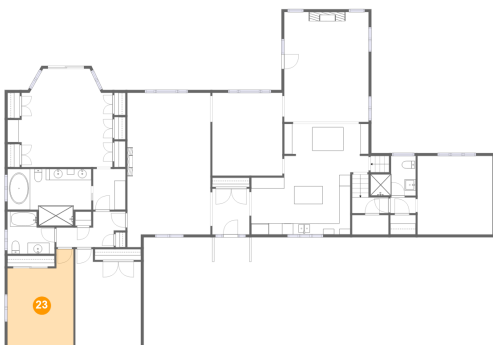
## 22 Floor 2 - Hall



Dimensions: 6'7" x 2'10"  
Area: 31 sq. ft  
Counted as Living Area:  
Yes

Heated: Yes  
Finished: Yes  
Enclosed: Yes  
Contiguous:  
Yes  
Permitted: Yes  
Wet Space: No  
Addition: No  
Conversion: No

## 23 Floor 2 - Bedroom



Dimensions: 11'11" x 17'7"  
Area: 178 sq. ft  
Counted as Living Area:  
Yes

Heated: Yes  
Finished: Yes  
Enclosed: Yes  
Contiguous:  
Yes  
Permitted: Yes  
Wet Space: No  
Addition: No  
Conversion: No

# 46 Devon Road, Essex Fells, Essex County, New Jersey, United States, 07021

## 24 Floor 2 - Porch



Dimensions: 6'4" x 4'4"  
Area: 28 sq. ft  
Counted as Living Area: No

Heated: No  
Finished: Yes  
Enclosed: No  
Contiguous: Yes  
Permitted: Yes  
Wet Space: No  
Addition: No  
Conversion: No

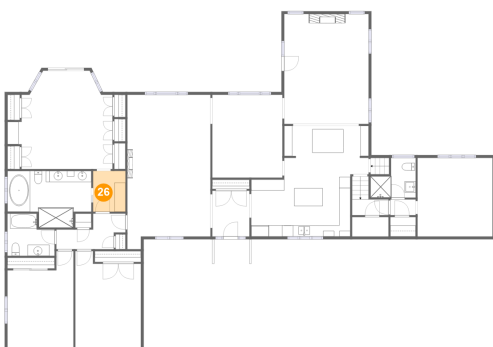
## 25 Floor 2 - Bath



Dimensions: 8'2" x 7'2"  
Area: 46 sq. ft  
Counted as Living Area:  
Yes

Heated: Yes  
Finished: Yes  
Enclosed: Yes  
Contiguous:  
Yes  
Permitted: Yes  
Wet Space: Yes  
Addition: No  
Conversion: No

## 26 Floor 2 - Hall



Dimensions: 5'10" x 7'4"  
Area: 43 sq. ft  
Counted as Living Area:  
Yes

Heated: Yes  
Finished: Yes  
Enclosed: Yes  
Contiguous:  
Yes  
Permitted: Yes  
Wet Space: No  
Addition: No  
Conversion: No

# 46 Devon Road, Essex Fells, Essex County, New Jersey, United States, 07021

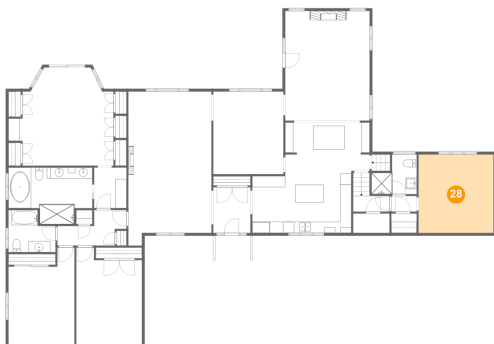
## 27 Floor 2 - Bath



Dimensions: 8'6" x 7'7"  
Area: 55 sq. ft  
Counted as Living Area:  
Yes

Heated: Yes  
Finished: Yes  
Enclosed: Yes  
Contiguous:  
Yes  
Permitted: Yes  
Wet Space: Yes  
Addition: No  
Conversion: No

## 28 Floor 2 - Bedroom



Dimensions: 13'6" x 14'1"  
Area: 190 sq. ft  
Counted as Living Area:  
Yes

Heated: Yes  
Finished: Yes  
Enclosed: Yes  
Contiguous:  
Yes  
Permitted: Yes  
Wet Space: No  
Addition: No  
Conversion: No