


Home report


1623 Fairhill Road, Sellersville, Bucks County, Pennsylvania,  
United States, 18960




Property summary

 **0** Garages

 **3** Bedrooms

 **1** Bathrooms

 **1** Half baths

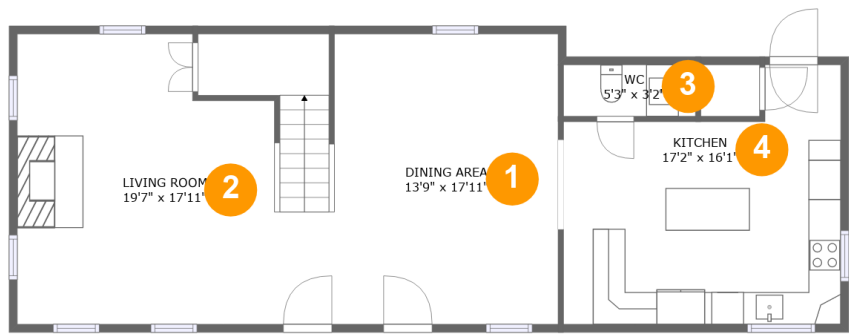
 **3** Floors

 **1,875** Gross living area sqft

 **2,101** Total sqft

Home report

1623 Fairhill Road, Sellersville, Bucks County, Pennsylvania,  
United States, 18960



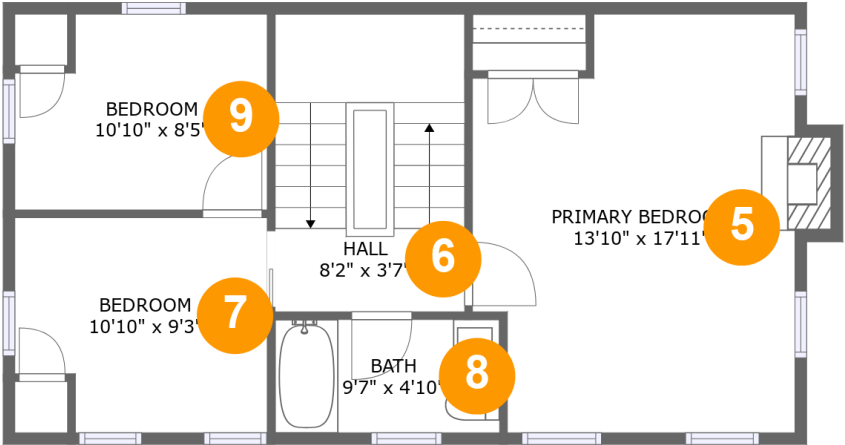
Room dimensions

Floor 1 Total sqft: 951    Living area: 951

#		Dimensions	sqft	Counted as living area
1	Dining Area	13'9" x 17'11"	248 sq. ft	Yes
2	Living Room	19'7" x 17'11"	346 sq. ft	Yes
3	WC	5'3" x 3'2"	26 sq. ft	Yes
4	Kitchen	17'2" x 16'1"	231 sq. ft	Yes

Home report

1623 Fairhill Road, Sellersville, Bucks County, Pennsylvania,  
United States, 18960



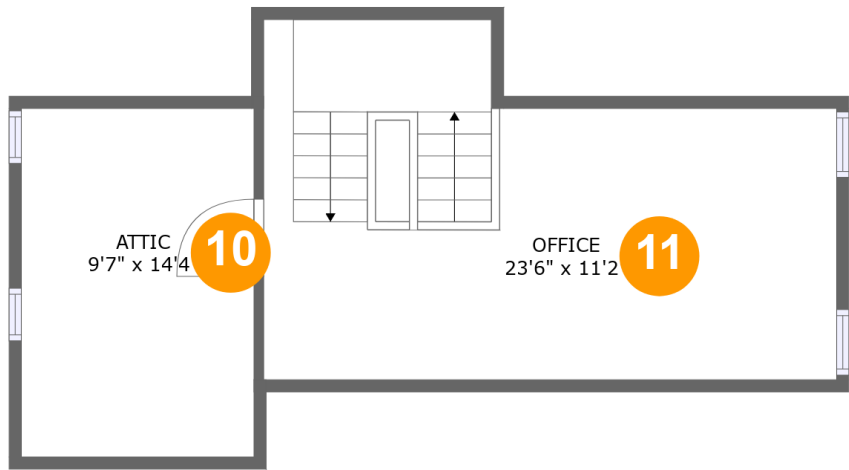
Room dimensions

Floor 2 Total sqft: 661    Living area: 653

#		Dimensions	sqft	Counted as living area
5	Primary Bedroom	13'10" x 17'11"	232 sq. ft	Yes
6	Hall	8'2" x 3'7"	104 sq. ft	Yes
7	Bedroom	10'10" x 9'3"	93 sq. ft	Yes
8	Bath	9'7" x 4'10"	47 sq. ft	Yes
9	Bedroom	10'10" x 8'5"	84 sq. ft	Yes

Home report

1623 Fairhill Road, Sellersville, Bucks County, Pennsylvania,  
United States, 18960



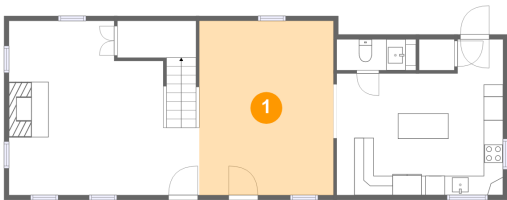
Room dimensions

Floor 3 Total sqft: 489    Living area: 271

#		Dimensions	sqft	Counted as living area
10	Attic	9'7" x 14'4"	86 sq. ft	No
11	Office	23'6" x 11'2"	253 sq. ft	Yes

1623 Fairhill Road, Sellersville, Bucks County, Pennsylvania,  
United States, 18960

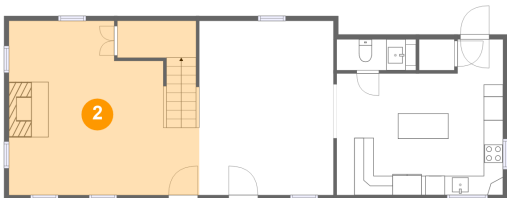
1 Floor 1 - Dining Area



Dimensions: 13'9" x 17'11"  
Area: 248 sq. ft  
Counted as living area: Yes

Heated: Yes  
Finished: Yes  
Enclosed: Yes  
Contiguous: Yes  
Permitted: Yes  
Wet space: No  
Addition: No  
Conversion: No

2 Floor 1 - Living Room



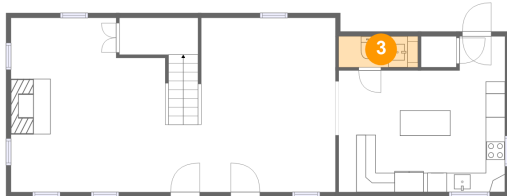
Dimensions: 19'7" x 17'11"  
Area: 346 sq. ft  
Counted as living area: Yes

Heated: Yes  
Finished: Yes  
Enclosed: Yes  
Contiguous: Yes  
Permitted: Yes  
Wet space: No  
Addition: No  
Conversion: No

## Home report

1623 Fairhill Road, Sellersville, Bucks County, Pennsylvania,  
United States, 18960

### 3 Floor 1 - WC



Dimensions: 5'3" x 3'2"  
Area: 26 sq. ft  
Counted as living area: Yes

Heated: Yes  
Finished: Yes  
Enclosed: Yes  
Contiguous: Yes  
Permitted: Yes  
Wet space: Yes  
Addition: No  
Conversion: No

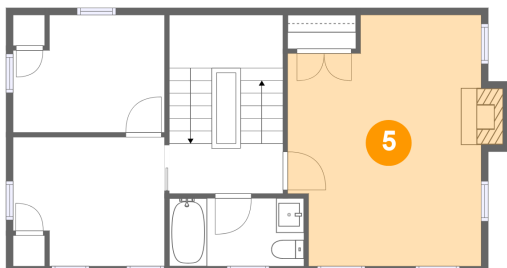
### 4 Floor 1 - Kitchen



Dimensions: 17'2" x 16'1"  
Area: 231 sq. ft  
Counted as living area: Yes

Heated: Yes  
Finished: Yes  
Enclosed: Yes  
Contiguous: Yes  
Permitted: Yes  
Wet space: No  
Addition: No  
Conversion: No

### 5 Floor 2 - Primary Bedroom



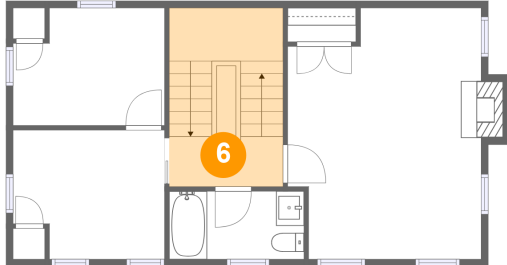
Dimensions: 13'10" x 17'11"  
Area: 232 sq. ft  
Counted as living area: Yes

Heated: Yes  
Finished: Yes  
Enclosed: Yes  
Contiguous: Yes  
Permitted: Yes  
Wet space: No  
Addition: No  
Conversion: No

## Home report

1623 Fairhill Road, Sellersville, Bucks County, Pennsylvania,  
United States, 18960

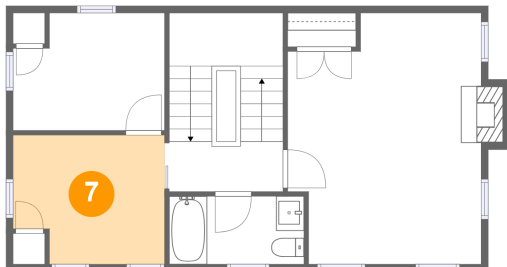
### 6 Floor 2 - Hall



Dimensions: 8'2" x 3'7"  
Area: 104 sq. ft  
Counted as living area: Yes

Heated: Yes  
Finished: Yes  
Enclosed: Yes  
Contiguous: Yes  
Permitted: Yes  
Wet space: No  
Addition: No  
Conversion: No

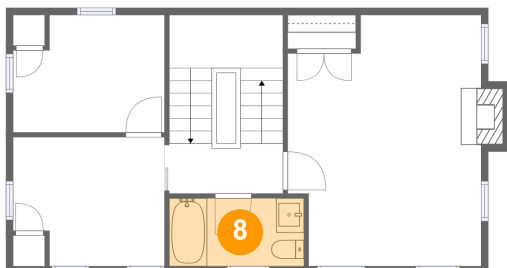
### 7 Floor 2 - Bedroom



Dimensions: 10'10" x 9'3"  
Area: 93 sq. ft  
Counted as living area: Yes

Heated: Yes  
Finished: Yes  
Enclosed: Yes  
Contiguous: Yes  
Permitted: Yes  
Wet space: No  
Addition: No  
Conversion: No

### 8 Floor 2 - Bath



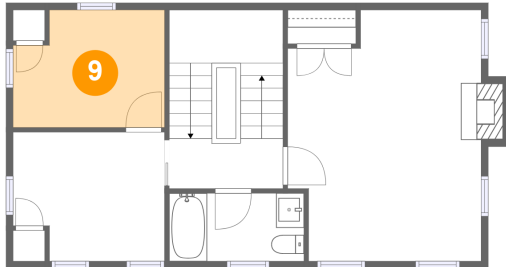
Dimensions: 9'7" x 4'10"  
Area: 47 sq. ft  
Counted as living area: Yes

Heated: Yes  
Finished: Yes  
Enclosed: Yes  
Contiguous: Yes  
Permitted: Yes  
Wet space: Yes  
Addition: No  
Conversion: No

## Home report

1623 Fairhill Road, Sellersville, Bucks County, Pennsylvania,  
United States, 18960

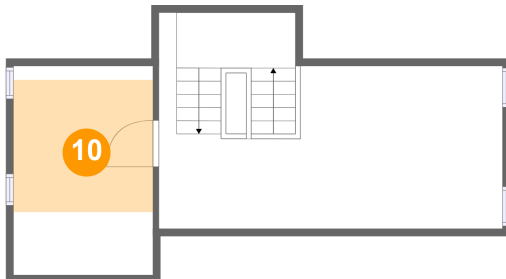
### 9 Floor 2 - Bedroom



Dimensions: 10'10" x 8'5"  
Area: 84 sq. ft  
Counted as living area: Yes

Heated: Yes  
Finished: Yes  
Enclosed: Yes  
Contiguous: Yes  
Permitted: Yes  
Wet space: No  
Addition: No  
Conversion: No

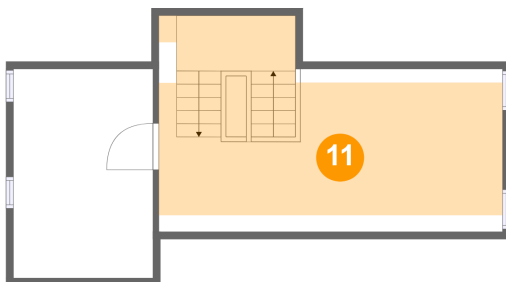
### 10 Floor 3 - Attic



Dimensions: 9'7" x 14'4"  
Area: 86 sq. ft  
Counted as living area: No

Heated: No  
Finished: No  
Enclosed: Yes  
Contiguous: Yes  
Permitted: Yes  
Wet space: No  
Addition: No  
Conversion: No

### 11 Floor 3 - Office



Dimensions: 23'6" x 11'2"  
Area: 253 sq. ft  
Counted as living area: Yes

Heated: Yes  
Finished: Yes  
Enclosed: Yes  
Contiguous: Yes  
Permitted: Yes  
Wet space: No  
Addition: No  
Conversion: No