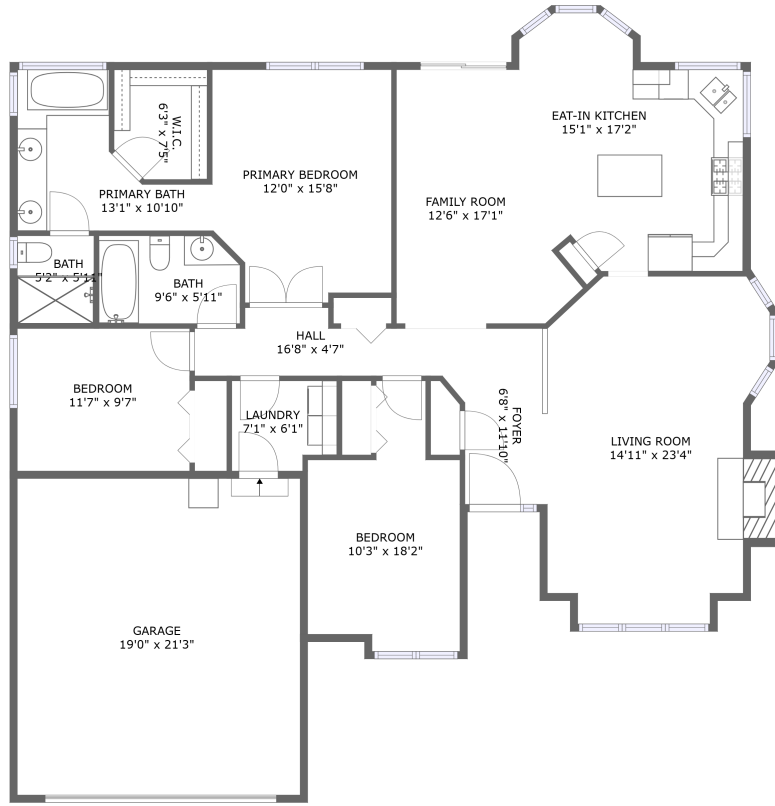



9217 Northeast 25th Court, Northeast Hazel Dell, Hazel Dell, Vancouver, Clark County, Washington,



FLOOR 1

Property summary


 **1** Garages

 **3** Bedrooms

 **2** Bathrooms

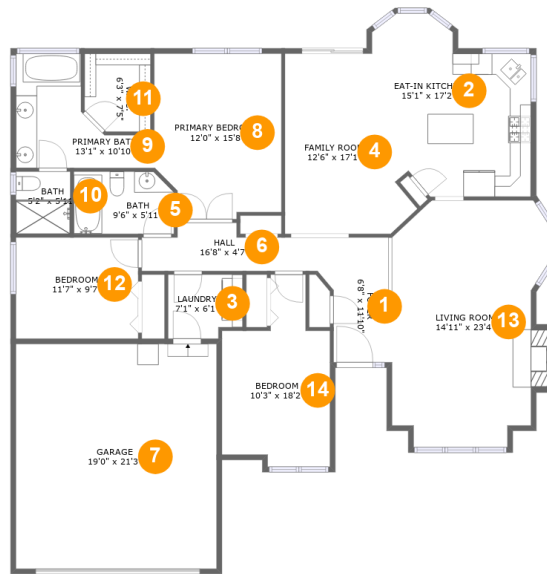
 **0** Half baths

 **1** Floors

 **1,708** Gross living area sqft

 **2,152** Total sqft

9217 Northeast 25th Court, Northeast Hazel Dell, Hazel Dell, Vancouver, Clark County, Washington,



Room dimensions

Floor 1

Total sqft: 2152 Living area: 1708

#		Dimensions	sqft	Counted as living area
1	Foyer	6'8" x 11'10"	72 sq. ft	Yes
2	Eat-in Kitchen	15'1" x 17'2"	221 sq. ft	Yes
3	Laundry	7'1" x 6'1"	40 sq. ft	Yes
4	Family Room	12'6" x 17'1"	156 sq. ft	Yes
5	Bath	9'6" x 5'11"	54 sq. ft	Yes
6	Hall	16'8" x 4'7"	61 sq. ft	Yes
7	Garage	19'0" x 21'3"	404 sq. ft	No
8	Primary Bedroom	12'0" x 15'8"	177 sq. ft	Yes
9	Primary Bath	13'1" x 10'10"	91 sq. ft	Yes
10	Bath	5'2" x 5'11"	30 sq. ft	Yes
11	W.I.C.	6'3" x 7'5"	44 sq. ft	Yes

Scan captured on Wed, 12 Feb 2025 21:29:26 GMT

Information is calculated by Cubicasa technology deemed highly reliable but not guaranteed.

**9217 Northeast 25th Court, Northeast Hazel Dell,
Hazel Dell, Vancouver, Clark County, Washington,**

#		Dimensions	sqft	Counted as living area
12	Bedroom	11'7" x 9'7"	111 sq. ft	Yes
13	Living Room	14'11" x 23'4"	314 sq. ft	Yes
14	Bedroom	10'3" x 18'2"	144 sq. ft	Yes

9217 Northeast 25th Court, Northeast Hazel Dell, Hazel Dell, Vancouver, Clark County, Washington,

1 Floor 1 - Foyer



Dimensions: 6'8" x 11'10"
Area: 72 sq. ft
Counted as living area: Yes

Heated: Yes
Finished: Yes
Enclosed: Yes
Contiguous: Yes
Permitted: Yes
Wet space: No
Addition: No
Conversion: No

2 Floor 1 - Eat-in Kitchen



Dimensions: 15'1" x 17'2"
Area: 221 sq. ft
Counted as living area: Yes

Heated: Yes
Finished: Yes
Enclosed: Yes
Contiguous: Yes
Permitted: Yes
Wet space: No
Addition: No
Conversion: No

9217 Northeast 25th Court, Northeast Hazel Dell, Hazel Dell, Vancouver, Clark County, Washington,

3 Floor 1 - Laundry



Dimensions: 7'1" x 6'1"
Area: 40 sq. ft
Counted as living area: Yes

Heated: Yes
Finished: Yes
Enclosed: Yes
Contiguous: Yes
Permitted: Yes
Wet space: No
Addition: No
Conversion: No

4 Floor 1 - Family Room



Dimensions: 12'6" x 17'1"
Area: 156 sq. ft
Counted as living area: Yes

Heated: Yes
Finished: Yes
Enclosed: Yes
Contiguous: Yes
Permitted: Yes
Wet space: No
Addition: No
Conversion: No

5 Floor 1 - Bath

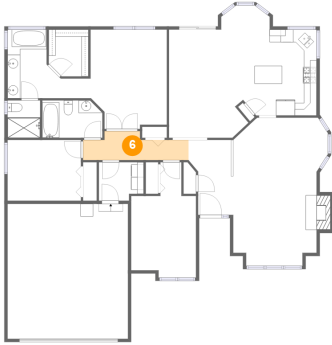


Dimensions: 9'6" x 5'11"
Area: 54 sq. ft
Counted as living area: Yes

Heated: Yes
Finished: Yes
Enclosed: Yes
Contiguous: Yes
Permitted: Yes
Wet space: Yes
Addition: No
Conversion: No

9217 Northeast 25th Court, Northeast Hazel Dell, Hazel Dell, Vancouver, Clark County, Washington,

6 Floor 1 - Hall



Dimensions: 16'8" x 4'7"
Area: 61 sq. ft
Counted as living area: Yes

Heated: Yes
Finished: Yes
Enclosed: Yes
Contiguous: Yes
Permitted: Yes
Wet space: No
Addition: No
Conversion: No

7 Floor 1 - Garage



Dimensions: 19'0" x 21'3"
Area: 404 sq. ft
Counted as living area: No

Heated: No
Finished: No
Enclosed: Yes
Contiguous: Yes
Permitted: Yes
Wet space: No
Addition: No
Conversion: No

8 Floor 1 - Primary Bedroom



Dimensions: 12'0" x 15'8"
Area: 177 sq. ft
Counted as living area: Yes

Heated: Yes
Finished: Yes
Enclosed: Yes
Contiguous: Yes
Permitted: Yes
Wet space: No
Addition: No
Conversion: No

9217 Northeast 25th Court, Northeast Hazel Dell, Hazel Dell, Vancouver, Clark County, Washington,

9 Floor 1 - Primary Bath



Dimensions: 13'1" x 10'10"
Area: 91 sq. ft
Counted as living area: Yes

Heated: Yes
Finished: Yes
Enclosed: Yes
Contiguous: Yes
Permitted: Yes
Wet space: Yes
Addition: No
Conversion: No

10 Floor 1 - Bath



Dimensions: 5'2" x 5'11"
Area: 30 sq. ft
Counted as living area: Yes

Heated: Yes
Finished: Yes
Enclosed: Yes
Contiguous: Yes
Permitted: Yes
Wet space: Yes
Addition: No
Conversion: No

11 Floor 1 - W.I.C.



Dimensions: 6'3" x 7'5"
Area: 44 sq. ft
Counted as living area: Yes

Heated: Yes
Finished: Yes
Enclosed: Yes
Contiguous: Yes
Permitted: Yes
Wet space: No
Addition: No
Conversion: No

9217 Northeast 25th Court, Northeast Hazel Dell, Hazel Dell, Vancouver, Clark County, Washington,

12 Floor 1 - Bedroom



Dimensions: 11'7" x 9'7"
Area: 111 sq. ft
Counted as living area: Yes

Heated: Yes
Finished: Yes
Enclosed: Yes
Contiguous: Yes
Permitted: Yes
Wet space: No
Addition: No
Conversion: No

13 Floor 1 - Living Room



Dimensions: 14'11" x 23'4"
Area: 314 sq. ft
Counted as living area: Yes

Heated: Yes
Finished: Yes
Enclosed: Yes
Contiguous: Yes
Permitted: Yes
Wet space: No
Addition: No
Conversion: No

14 Floor 1 - Bedroom



Dimensions: 10'3" x 18'2"
Area: 144 sq. ft
Counted as living area: Yes

Heated: Yes
Finished: Yes
Enclosed: Yes
Contiguous: Yes
Permitted: Yes
Wet space: No
Addition: No
Conversion: No