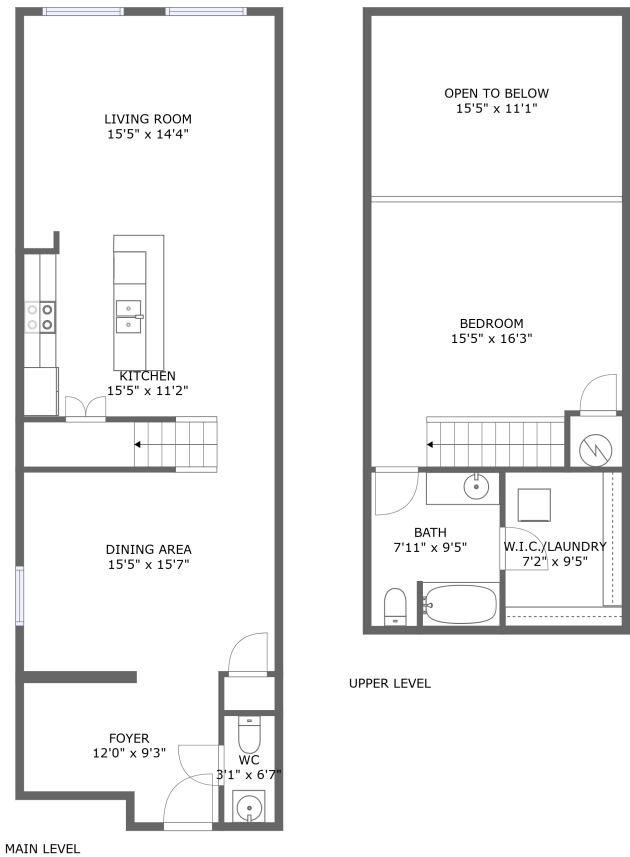





324 Salem Avenue Southwest, Downtown Roanoke,
Roanoke, Roanoke city, Virginia, United States, 24016





Property summary


 **0** Garages


 **1** Bedrooms

 **1** Bathrooms

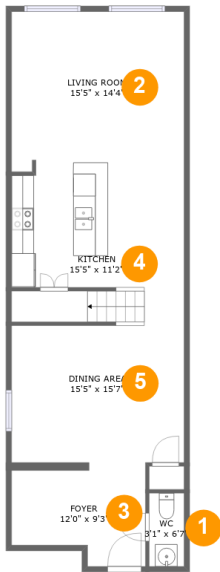
 **1** Half baths

 **2** Floors

 **1,247** Gross living area sqft

 **1,450** Total sqft

324 Salem Avenue Southwest, Downtown Roanoke,
Roanoke, Roanoke city, Virginia, United States, 24016

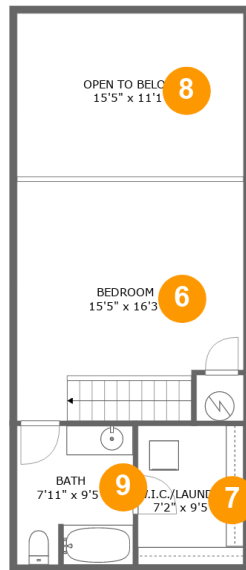


Room dimensions

Floor 1Total sqft: 817 Living area: 817

#		Dimensions	sqft	Counted as living area
1	WC	3'1" x 6'7"	20 sq. ft	Yes
2	Living Room	15'5" x 14'4"	210 sq. ft	Yes
3	Foyer	12'0" x 9'3"	93 sq. ft	Yes
4	Kitchen	15'5" x 11'2"	169 sq. ft	Yes
5	Dining Area	15'5" x 15'7"	235 sq. ft	Yes

**324 Salem Avenue Southwest, Downtown Roanoke,
Roanoke, Roanoke city, Virginia, United States, 24016**



Room dimensions

Floor 2

Total sqft: 633 Living area: 430

#		Dimensions	sqft	Counted as living area
6	Bedroom	15'5" x 16'3"	244 sq. ft	Yes
7	W.I.C./LAUNDRY	7'2" x 9'5"	68 sq. ft	Yes
8	Open To Below	15'5" x 11'1"	171 sq. ft	No
9	Bath	7'11" x 9'5"	74 sq. ft	Yes

324 Salem Avenue Southwest, Downtown Roanoke,
Roanoke, Roanoke city, Virginia, United States, 24016

1 Floor 1 - WC



Dimensions: 3'1" x 6'7"
Area: 20 sq. ft
Counted as living area: Yes

Heated: Yes
Finished: Yes
Enclosed: Yes
Contiguous: Yes
Permitted: Yes
Wet space: Yes
Addition: No
Conversion: No

2 Floor 1 - Living Room



Dimensions: 15'5" x 14'4"
Area: 210 sq. ft
Counted as living area: Yes

Heated: Yes
Finished: Yes
Enclosed: Yes
Contiguous: Yes
Permitted: Yes
Wet space: No
Addition: No
Conversion: No

324 Salem Avenue Southwest, Downtown Roanoke, Roanoke, Roanoke city, Virginia, United States, 24016

3 Floor 1 - Foyer



Dimensions: 12'0" x 9'3"
Area: 93 sq. ft
Counted as living area: Yes

Heated: Yes
Finished: Yes
Enclosed: Yes
Contiguous: Yes
Permitted: Yes
Wet space: No
Addition: No
Conversion: No

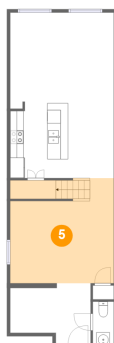
4 Floor 1 - Kitchen



Dimensions: 15'5" x 11'2"
Area: 169 sq. ft
Counted as living area: Yes

Heated: Yes
Finished: Yes
Enclosed: Yes
Contiguous: Yes
Permitted: Yes
Wet space: No
Addition: No
Conversion: No

5 Floor 1 - Dining Area



Dimensions: 15'5" x 15'7"
Area: 235 sq. ft
Counted as living area: Yes

Heated: Yes
Finished: Yes
Enclosed: Yes
Contiguous: Yes
Permitted: Yes
Wet space: No
Addition: No
Conversion: No

324 Salem Avenue Southwest, Downtown Roanoke,
Roanoke, Roanoke city, Virginia, United States, 24016

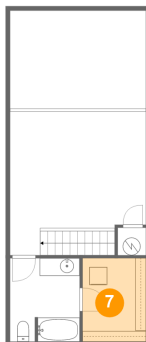
6 Floor 2 - Bedroom



Dimensions: 15'5" x 16'3"
Area: 244 sq. ft
Counted as living area: Yes

Heated: Yes
Finished: Yes
Enclosed: Yes
Contiguous: Yes
Permitted: Yes
Wet space: No
Addition: No
Conversion: No

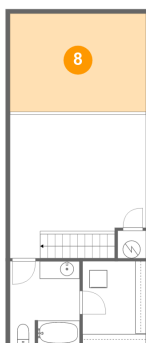
7 Floor 2 - W.I.C./LAUNDRY



Dimensions: 7'2" x 9'5"
Area: 68 sq. ft
Counted as living area: Yes

Heated: Yes
Finished: Yes
Enclosed: Yes
Contiguous: Yes
Permitted: Yes
Wet space: No
Addition: No
Conversion: No

8 Floor 2 - Open To Below

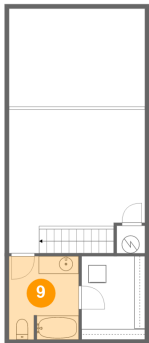


Dimensions: 15'5" x 11'1"
Area: 171 sq. ft
Counted as living area: No

Heated: No
Finished: No
Enclosed: No
Contiguous: Yes
Permitted: No
Wet space: No
Addition: No
Conversion: No

324 Salem Avenue Southwest, Downtown Roanoke,
Roanoke, Roanoke city, Virginia, United States, 24016

9 Floor 2 - Bath



Dimensions: 7'11" x 9'5"
Area: 74 sq. ft
Counted as living area: Yes

Heated: Yes
Finished: Yes
Enclosed: Yes
Contiguous: Yes
Permitted: Yes
Wet space: Yes
Addition: No
Conversion: No