

Home report

7315 Colgate Avenue, Caruth Hills, Dallas, Dallas County, Texas,
United States, 75225



Total Area: 4829 sq. ft
Floor 1: 2134 sq. ft, Floor 2: 2695 sq. ft
Excluded: Storage 61 sq. ft, Garage 490 sq. ft, Porch 166 sq. ft, Covered patio 270 sq. ft, Patio 150 sq. ft, Walls: 265 sq. ft

Property summary

 **2** Floors

 **4** Bedrooms

 **3** Bathrooms

Home report

**7315 Colgate Avenue, Caruth Hills, Dallas, Dallas County, Texas,
United States, 75225**



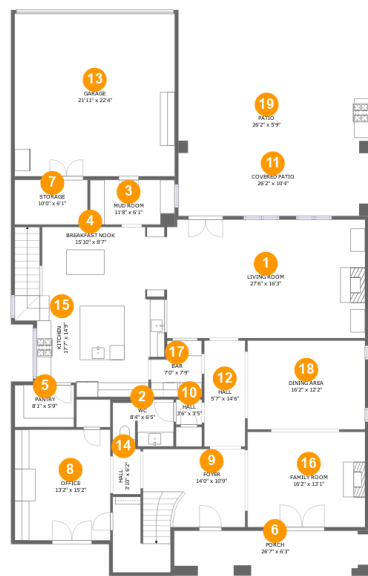
1
Half baths



1
Garages

Home report

7315 Colgate Avenue, Caruth Hills, Dallas, Dallas County, Texas,
United States, 75225



Room dimensions

Floor 1

Total:2134sqft

Excluded: 1137sqft

#		Max Dimensions	sqft	Included
1	Living Room	27'6" x 16'3"	445 sq. ft	Yes
2	WC	8'4" x 6'5"	53 sq. ft	Yes
3	Mud Room	11'8" x 6'1"	71 sq. ft	Yes
4	Breakfast Nook	15'10" x 8'7"	145 sq. ft	Yes
5	Pantry	8'1" x 5'9"	47 sq. ft	Yes
6	Porch	26'7" x 6'3"	166 sq. ft	No
7	Storage	10'0" x 6'1"	61 sq. ft	No
8	Office	13'2" x 15'2"	199 sq. ft	Yes
9	Foyer	14'0" x 10'9"	159 sq. ft	Yes
10	Hall	3'6" x 3'5"	12 sq. ft	Yes
11	Covered Patio	26'2" x 10'4"	270 sq. ft	No

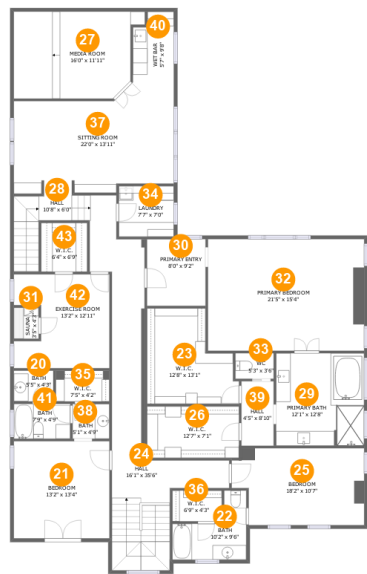
Home report

**7315 Colgate Avenue, Caruth Hills, Dallas, Dallas County, Texas,
United States, 75225**

#		Max Dimensions	sqft	Included
12	Hall	5'7" x 14'6"	81 sq. ft	Yes
13	Garage	21'11" x 22'4"	490 sq. ft	No
14	Hall	3'10" x 6'2"	24 sq. ft	Yes
15	Kitchen	17'7" x 14'9"	279 sq. ft	Yes
16	Family Room	16'2" x 13'1"	211 sq. ft	Yes
17	Bar	7'0" x 7'9"	49 sq. ft	Yes
18	Dining Area	16'2" x 12'2"	196 sq. ft	Yes
19	Patio	26'2" x 5'9"	150 sq. ft	No

Home report

7315 Colgate Avenue, Caruth Hills, Dallas, Dallas County, Texas,
United States, 75225



Room dimensions

Floor 2 Total:2695sqft Excluded: 0sqft

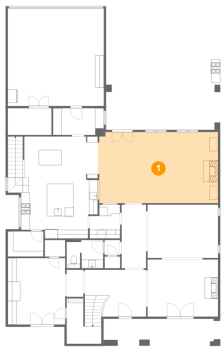
#		Max Dimensions	sqft	Included
20	Bath	5'5" x 4'3"	23 sq. ft	Yes
21	Bedroom	13'2" x 13'4"	175 sq. ft	Yes
22	Bath	10'2" x 9'6"	64 sq. ft	Yes
23	W.I.C.	12'8" x 13'1"	134 sq. ft	Yes
24	Hall	16'1" x 35'6"	301 sq. ft	Yes
25	Bedroom	18'2" x 10'7"	178 sq. ft	Yes
26	W.I.C.	12'7" x 7'1"	89 sq. ft	Yes
27	Media Room	16'0" x 11'11"	192 sq. ft	Yes
28	Hall	10'8" x 6'0"	89 sq. ft	Yes
29	Primary Bath	12'1" x 12'8"	153 sq. ft	Yes
30	Primary Entry	8'0" x 9'2"	73 sq. ft	Yes

Home report

**7315 Colgate Avenue, Caruth Hills, Dallas, Dallas County, Texas,
United States, 75225**

#		Max Dimensions	sqft	Included
31	Sauna	3'5" x 4'3"	14 sq. ft	Yes
32	Primary Bedroom	21'5" x 15'4"	328 sq. ft	Yes
33	WC	5'3" x 3'6"	18 sq. ft	Yes
34	Laundry	7'7" x 7'0"	53 sq. ft	Yes
35	W.I.C.	7'5" x 4'2"	31 sq. ft	Yes
36	W.I.C.	6'9" x 4'3"	29 sq. ft	Yes
37	Sitting Room	22'0" x 13'11"	277 sq. ft	Yes
38	Bath	5'1" x 4'9"	24 sq. ft	Yes
39	Hall	4'5" x 8'10"	39 sq. ft	Yes
40	Wet Bar	5'7" x 9'8"	50 sq. ft	Yes
41	Bath	7'9" x 4'9"	37 sq. ft	Yes
42	Exercise Room	13'2" x 12'11"	151 sq. ft	Yes
43	W.I.C.	6'4" x 6'9"	43 sq. ft	Yes

1 Floor 1 - Living Room



Max Dimensions: 27'6" x 16'3"
Calculated Area: 445 sq. ft
Included: Yes

Heated: Yes
Finished: Yes
Enclosed: Yes
Contiguous: Yes
Permitted: Yes
Wet space: No
Addition: No
Conversion: No

2 Floor 1 - WC



Max Dimensions: 8'4" x 6'5"
Calculated Area: 53 sq. ft
Included: Yes

Heated: Yes
Finished: Yes
Enclosed: Yes
Contiguous: Yes
Permitted: Yes
Wet space: Yes
Addition: No
Conversion: No

7315 Colgate Avenue, Caruth Hills, Dallas, Dallas County, Texas,
United States, 75225

3 Floor 1 - Mud Room



Max Dimensions: 11'8" x 6'1"
Calculated Area: 71 sq. ft
Included: Yes

Heated: Yes
Finished: Yes
Enclosed: Yes
Contiguous: Yes
Permitted: Yes
Wet space: No
Addition: No
Conversion: No

4 Floor 1 - Breakfast Nook



Max Dimensions: 15'10" x 8'7"
Calculated Area: 145 sq. ft
Included: Yes

Heated: Yes
Finished: Yes
Enclosed: Yes
Contiguous: Yes
Permitted: Yes
Wet space: No
Addition: No
Conversion: No

5 Floor 1 - Pantry



Max Dimensions: 8'1" x 5'9"
Calculated Area: 47 sq. ft
Included: Yes

Heated: Yes
Finished: Yes
Enclosed: Yes
Contiguous: Yes
Permitted: Yes
Wet space: No
Addition: No
Conversion: No

7315 Colgate Avenue, Caruth Hills, Dallas, Dallas County, Texas,
United States, 75225

6 Floor 1 - Porch



Max Dimensions: 26'7" x 6'3"
Calculated Area: 166 sq. ft
Included: No

Heated: No
Finished: Yes
Enclosed: No
Contiguous: Yes
Permitted: Yes
Wet space: No
Addition: No
Conversion: No

7 Floor 1 - Storage



Max Dimensions: 10'0" x 6'1"
Calculated Area: 61 sq. ft
Included: No

Heated: No
Finished: No
Enclosed: No
Contiguous: Yes
Permitted: Yes
Wet space: No
Addition: No
Conversion: No

8 Floor 1 - Office



Max Dimensions: 13'2" x 15'2"
Calculated Area: 199 sq. ft
Included: Yes

Heated: Yes
Finished: Yes
Enclosed: Yes
Contiguous: Yes
Permitted: Yes
Wet space: No
Addition: No
Conversion: No

9 Floor 1 - Foyer



Max Dimensions: 14'0" x 10'9"
Calculated Area: 159 sq. ft
Included: Yes

Heated: Yes
Finished: Yes
Enclosed: Yes
Contiguous: Yes
Permitted: Yes
Wet space: No
Addition: No
Conversion: No

10 Floor 1 - Hall



Max Dimensions: 3'6" x 3'5"
Calculated Area: 12 sq. ft
Included: Yes

Heated: Yes
Finished: Yes
Enclosed: Yes
Contiguous: Yes
Permitted: Yes
Wet space: No
Addition: No
Conversion: No

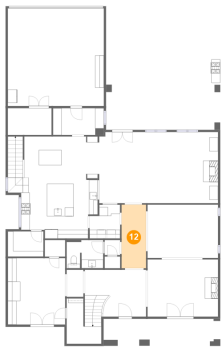
11 Floor 1 - Covered Patio



Max Dimensions: 26'2" x 10'4"
Calculated Area: 270 sq. ft
Included: No

Heated: No
Finished: Yes
Enclosed: No
Contiguous: Yes
Permitted: Yes
Wet space: No
Addition: No
Conversion: No

12 Floor 1 - Hall



Max Dimensions: 5'7" x 14'6"
Calculated Area: 81 sq. ft
Included: Yes

Heated: Yes
Finished: Yes
Enclosed: Yes
Contiguous: Yes
Permitted: Yes
Wet space: No
Addition: No
Conversion: No

13 Floor 1 - Garage



Max Dimensions: 21'11" x 22'4"
Calculated Area: 490 sq. ft
Included: No

Heated: No
Finished: No
Enclosed: Yes
Contiguous: Yes
Permitted: Yes
Wet space: No
Addition: No
Conversion: No

14 Floor 1 - Hall



Max Dimensions: 3'10" x 6'2"
Calculated Area: 24 sq. ft
Included: Yes

Heated: Yes
Finished: Yes
Enclosed: Yes
Contiguous: Yes
Permitted: Yes
Wet space: No
Addition: No
Conversion: No

7315 Colgate Avenue, Caruth Hills, Dallas, Dallas County, Texas,
United States, 75225

15 Floor 1 - Kitchen



Max Dimensions: 17'7" x 14'9"
Calculated Area: 279 sq. ft
Included: Yes

Heated: Yes
Finished: Yes
Enclosed: Yes
Contiguous: Yes
Permitted: Yes
Wet space: No
Addition: No
Conversion: No

16 Floor 1 - Family Room



Max Dimensions: 16'2" x 13'1"
Calculated Area: 211 sq. ft
Included: Yes

Heated: Yes
Finished: Yes
Enclosed: Yes
Contiguous: Yes
Permitted: Yes
Wet space: No
Addition: No
Conversion: No

17 Floor 1 - Bar



Max Dimensions: 7'0" x 7'9"
Calculated Area: 49 sq. ft
Included: Yes

Heated: Yes
Finished: Yes
Enclosed: Yes
Contiguous: Yes
Permitted: Yes
Wet space: No
Addition: No
Conversion: No

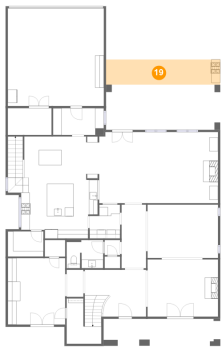
18 Floor 1 - Dining Area



Max Dimensions: 16'2" x 12'2"
Calculated Area: 196 sq. ft
Included: Yes

Heated: Yes
Finished: Yes
Enclosed: Yes
Contiguous: Yes
Permitted: Yes
Wet space: No
Addition: No
Conversion: No

19 Floor 1 - Patio



Max Dimensions: 26'2" x 5'9"
Calculated Area: 150 sq. ft
Included: No

Heated: No
Finished: Yes
Enclosed: No
Contiguous: Yes
Permitted: Yes
Wet space: No
Addition: No
Conversion: No

20 Floor 2 - Bath



Max Dimensions: 5'5" x 4'3"
Calculated Area: 23 sq. ft
Included: Yes

Heated: Yes
Finished: Yes
Enclosed: Yes
Contiguous: Yes
Permitted: Yes
Wet space: Yes
Addition: No
Conversion: No

21 Floor 2 - Bedroom



Max Dimensions: 13'2" x 13'4"
Calculated Area: 175 sq. ft
Included: Yes

Heated: Yes
Finished: Yes
Enclosed: Yes
Contiguous: Yes
Permitted: Yes
Wet space: No
Addition: No
Conversion: No

22 Floor 2 - Bath



Max Dimensions: 10'2" x 9'6"
Calculated Area: 64 sq. ft
Included: Yes

Heated: Yes
Finished: Yes
Enclosed: Yes
Contiguous: Yes
Permitted: Yes
Wet space: Yes
Addition: No
Conversion: No

23 Floor 2 - W.I.C.



Max Dimensions: 12'8" x 13'1"
Calculated Area: 134 sq. ft
Included: Yes

Heated: Yes
Finished: Yes
Enclosed: Yes
Contiguous: Yes
Permitted: Yes
Wet space: No
Addition: No
Conversion: No

24 Floor 2 - Hall



Max Dimensions: 16'1" x 35'6"
Calculated Area: 301 sq. ft
Included: Yes

Heated: Yes
Finished: Yes
Enclosed: Yes
Contiguous: Yes
Permitted: Yes
Wet space: No
Addition: No
Conversion: No

25 Floor 2 - Bedroom



Max Dimensions: 18'2" x 10'7"
Calculated Area: 178 sq. ft
Included: Yes

Heated: Yes
Finished: Yes
Enclosed: Yes
Contiguous: Yes
Permitted: Yes
Wet space: No
Addition: No
Conversion: No

26 Floor 2 - W.I.C.



Max Dimensions: 12'7" x 7'1"
Calculated Area: 89 sq. ft
Included: Yes

Heated: Yes
Finished: Yes
Enclosed: Yes
Contiguous: Yes
Permitted: Yes
Wet space: No
Addition: No
Conversion: No

27 Floor 2 - Media Room



Max Dimensions: 16'0" x 11'11"
Calculated Area: 192 sq. ft
Included: Yes

Heated: Yes
Finished: Yes
Enclosed: Yes
Contiguous: Yes
Permitted: Yes
Wet space: No
Addition: No
Conversion: No

28 Floor 2 - Hall



Max Dimensions: 10'8" x 6'0"
Calculated Area: 89 sq. ft
Included: Yes

Heated: Yes
Finished: Yes
Enclosed: Yes
Contiguous: Yes
Permitted: Yes
Wet space: No
Addition: No
Conversion: No

29 Floor 2 - Primary Bath



Max Dimensions: 12'1" x 12'8"
Calculated Area: 153 sq. ft
Included: Yes

Heated: Yes
Finished: Yes
Enclosed: Yes
Contiguous: Yes
Permitted: Yes
Wet space: Yes
Addition: No
Conversion: No

7315 Colgate Avenue, Caruth Hills, Dallas, Dallas County, Texas,
United States, 75225

30 Floor 2 - Primary Entry



Max Dimensions: 8'0" x 9'2"
Calculated Area: 73 sq. ft
Included: Yes

Heated: Yes
Finished: Yes
Enclosed: Yes
Contiguous: Yes
Permitted: Yes
Wet space: No
Addition: No
Conversion: No

31 Floor 2 - Sauna



Max Dimensions: 3'5" x 4'3"
Calculated Area: 14 sq. ft
Included: Yes

Heated: Yes
Finished: Yes
Enclosed: Yes
Contiguous: Yes
Permitted: Yes
Wet space: No
Addition: No
Conversion: No

32 Floor 2 - Primary Bedroom



Max Dimensions: 21'5" x
15'4"
Calculated Area: 328 sq. ft
Included: Yes

Heated: Yes
Finished: Yes
Enclosed: Yes
Contiguous:
Yes
Permitted: Yes
Wet space: No
Addition: No
Conversion: No

7315 Colgate Avenue, Caruth Hills, Dallas, Dallas County, Texas,
United States, 75225

33 Floor 2 - WC



Max Dimensions: 5'3" x 3'6"
Calculated Area: 18 sq. ft
Included: Yes

Heated: Yes
Finished: Yes
Enclosed: Yes
Contiguous: Yes
Permitted: Yes
Wet space: Yes
Addition: No
Conversion: No

34 Floor 2 - Laundry



Max Dimensions: 7'7" x 7'0"
Calculated Area: 53 sq. ft
Included: Yes

Heated: Yes
Finished: Yes
Enclosed: Yes
Contiguous: Yes
Permitted: Yes
Wet space: No
Addition: No
Conversion: No

35 Floor 2 - W.I.C.



Max Dimensions: 7'5" x 4'2"
Calculated Area: 31 sq. ft
Included: Yes

Heated: Yes
Finished: Yes
Enclosed: Yes
Contiguous: Yes
Permitted: Yes
Wet space: No
Addition: No
Conversion: No

36 Floor 2 - W.I.C.



Max Dimensions: 6'9" x 4'3"
Calculated Area: 29 sq. ft
Included: Yes

Heated: Yes
Finished: Yes
Enclosed: Yes
Contiguous: Yes
Permitted: Yes
Wet space: No
Addition: No
Conversion: No

37 Floor 2 - Sitting Room



Max Dimensions: 22'0" x 13'11"
Calculated Area: 277 sq. ft
Included: Yes

Heated: Yes
Finished: Yes
Enclosed: Yes
Contiguous: Yes
Permitted: Yes
Wet space: No
Addition: No
Conversion: No

38 Floor 2 - Bath



Max Dimensions: 5'1" x 4'9"
Calculated Area: 24 sq. ft
Included: Yes

Heated: Yes
Finished: Yes
Enclosed: Yes
Contiguous: Yes
Permitted: Yes
Wet space: Yes
Addition: No
Conversion: No

7315 Colgate Avenue, Caruth Hills, Dallas, Dallas County, Texas,
United States, 75225

39 Floor 2 - Hall



Max Dimensions: 4'5" x 8'10"
Calculated Area: 39 sq. ft
Included: Yes

Heated: Yes
Finished: Yes
Enclosed: Yes
Contiguous: Yes
Permitted: Yes
Wet space: No
Addition: No
Conversion: No

40 Floor 2 - Wet Bar



Max Dimensions: 5'7" x 9'8"
Calculated Area: 50 sq. ft
Included: Yes

Heated: Yes
Finished: Yes
Enclosed: Yes
Contiguous: Yes
Permitted: Yes
Wet space: No
Addition: No
Conversion: No

41 Floor 2 - Bath



Max Dimensions: 7'9" x 4'9"
Calculated Area: 37 sq. ft
Included: Yes

Heated: Yes
Finished: Yes
Enclosed: Yes
Contiguous: Yes
Permitted: Yes
Wet space: Yes
Addition: No
Conversion: No

42 Floor 2 - Exercise Room



Max Dimensions: 13'2" x 12'11"
Calculated Area: 151 sq. ft
Included: Yes

Heated: Yes
Finished: Yes
Enclosed: Yes
Contiguous: Yes
Permitted: Yes
Wet space: No
Addition: No
Conversion: No

43 Floor 2 - W.I.C.



Max Dimensions: 6'4" x 6'9"
Calculated Area: 43 sq. ft
Included: Yes

Heated: Yes
Finished: Yes
Enclosed: Yes
Contiguous: Yes
Permitted: Yes
Wet space: No
Addition: No
Conversion: No