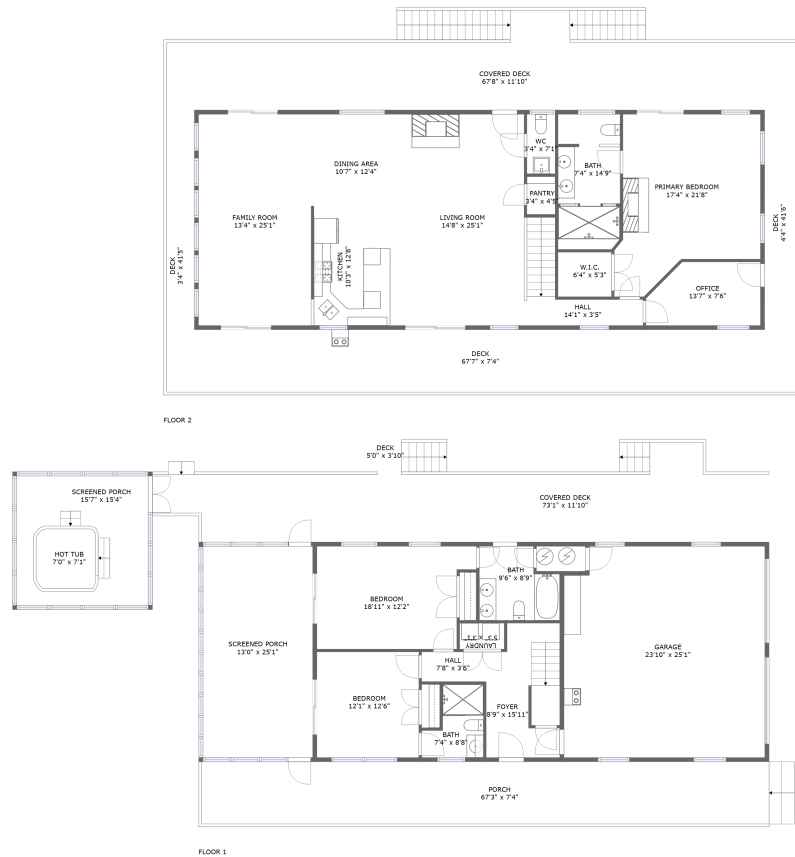




606 Rocky Branch Rd, Baker, Hardy County, West Virginia, United States, 26801



Property summary

 **1** Garages

 **3** Bedrooms

 **3** Bathrooms

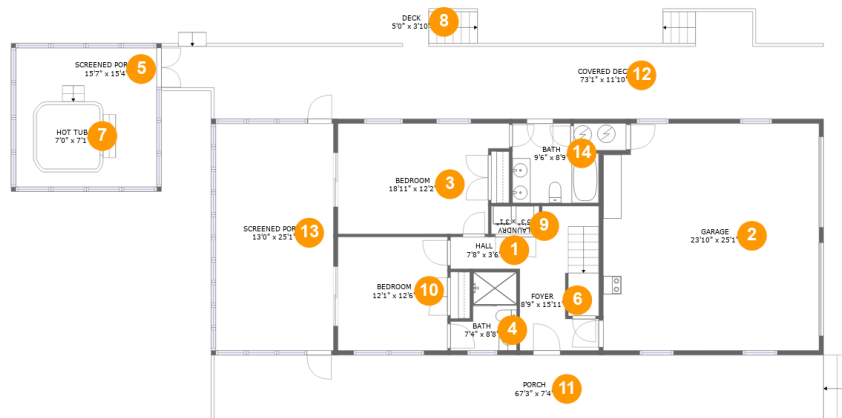
 **1** Half baths

 **2** Floors

 **2,529** Gross living area sqft

 **6,237** Total sqft

606 Rocky Branch Rd, Baker, Hardy County, West Virginia, United States, 26801



Room dimensions

Floor 1

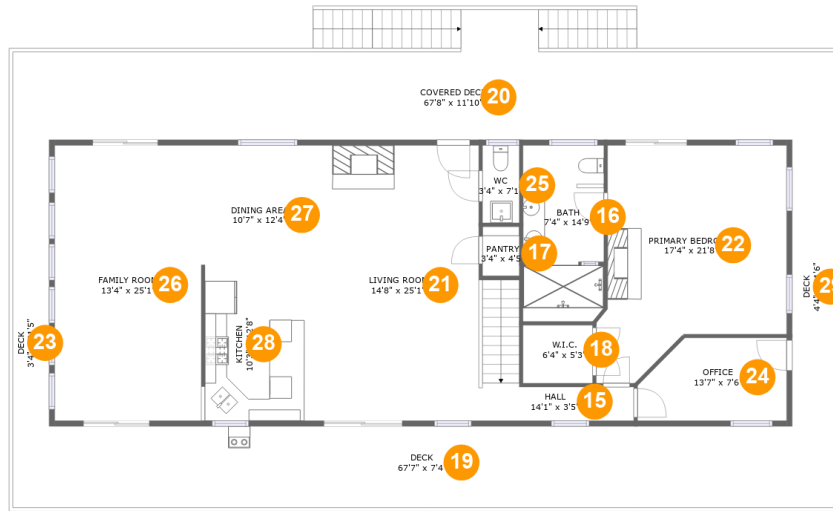
Total sqft: 3090 Living area: 767

#		Dimensions	sqft	Counted as living area
1	Hall	7'8" x 3'6"	27 sq. ft	Yes
2	Garage	23'10" x 25'1"	586 sq. ft	No
3	Bedroom	18'11" x 12'2"	209 sq. ft	Yes
4	Bath	7'4" x 8'8"	50 sq. ft	Yes
5	Screened Porch	15'7" x 15'4"	239 sq. ft	No
6	Foyer	8'9" x 15'11"	109 sq. ft	Yes
7	Hot Tub	7'0" x 7'1"	49 sq. ft	No
8	Deck	5'0" x 3'10"	19 sq. ft	No
9	Laundry	5'3" x 3'1"	16 sq. ft	Yes
10	Bedroom	12'1" x 12'6"	152 sq. ft	Yes
11	Porch	67'3" x 7'4"	496 sq. ft	No

606 Rocky Branch Rd, Baker, Hardy County, West Virginia, United States, 26801

#		Dimensions	sqft	Counted as living area
12	Covered Deck	73'1" x 11'10"	590 sq. ft	No
13	Screened Porch	13'0" x 25'1"	326 sq. ft	No
14	Bath	9'6" x 8'9"	74 sq. ft	Yes

606 Rocky Branch Rd, Baker, Hardy County, West Virginia, United States, 26801



Room dimensions

Floor 2

Total sqft: 3147 Living area: 1762

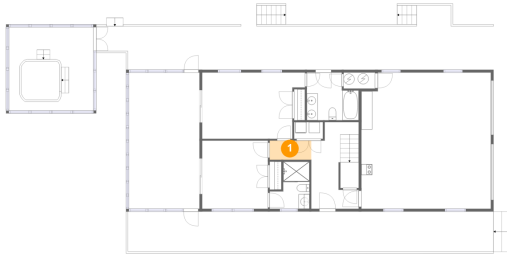
#		Dimensions	sqft	Counted as living area
15	Hall	14'1" x 3'5"	79 sq. ft	Yes
16	Bath	7'4" x 14'9"	115 sq. ft	Yes
17	Pantry	3'4" x 4'5"	15 sq. ft	Yes
18	W.I.C.	6'4" x 5'3"	33 sq. ft	Yes
19	Deck	67'7" x 7'4"	500 sq. ft	No
20	Covered Deck	67'8" x 11'10"	568 sq. ft	No
21	Living Room	14'8" x 25'1"	367 sq. ft	Yes
22	Primary Bedroom	17'4" x 21'8"	307 sq. ft	Yes
23	Deck	3'4" x 41'5"	137 sq. ft	No
24	Office	13'7" x 7'6"	93 sq. ft	Yes
25	WC	3'4" x 7'1"	24 sq. ft	Yes

606 Rocky Branch Rd, Baker, Hardy County, West Virginia, United States, 26801

#		Dimensions	sqft	Counted as living area
26	Family Room	13'4" x 25'1"	335 sq. ft	Yes
27	Dining Area	10'7" x 12'4"	131 sq. ft	Yes
28	Kitchen	10'3" x 12'8"	130 sq. ft	Yes
29	Deck	4'4" x 41'6"	182 sq. ft	No

606 Rocky Branch Rd, Baker, Hardy County, West Virginia, United States, 26801

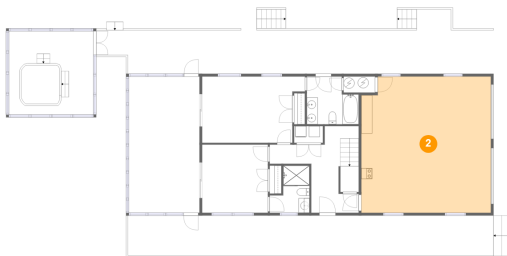
1 Floor 1 - Hall



Dimensions: 7'8" x 3'6"
Area: 27 sq. ft
Counted as living area: Yes

Heated: Yes
Finished: Yes
Enclosed: Yes
Contiguous: Yes
Permitted: Yes
Wet space: No
Addition: No
Conversion: No

2 Floor 1 - Garage

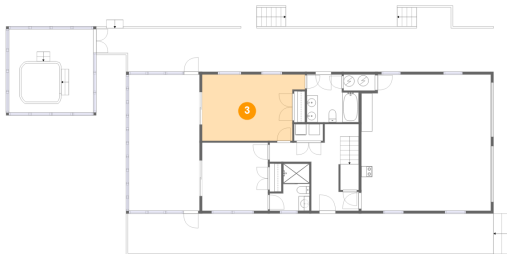


Dimensions: 23'10" x 25'1"
Area: 586 sq. ft
Counted as living area: No

Heated: No
Finished: No
Enclosed: Yes
Contiguous: Yes
Permitted: Yes
Wet space: No
Addition: No
Conversion: No

606 Rocky Branch Rd, Baker, Hardy County, West Virginia, United States, 26801

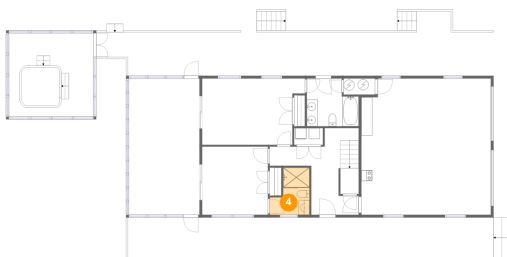
3 Floor 1 - Bedroom



Dimensions: 18'11" x 12'2"
Area: 209 sq. ft
Counted as living area: Yes

Heated: Yes
Finished: Yes
Enclosed: Yes
Contiguous: Yes
Permitted: Yes
Wet space: No
Addition: No
Conversion: No

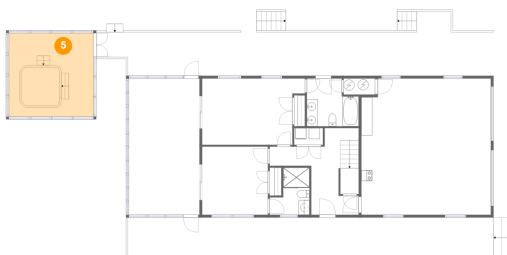
4 Floor 1 - Bath



Dimensions: 7'4" x 8'8"
Area: 50 sq. ft
Counted as living area: Yes

Heated: Yes
Finished: Yes
Enclosed: Yes
Contiguous: Yes
Permitted: Yes
Wet space: Yes
Addition: No
Conversion: No

5 Floor 1 - Screened Porch

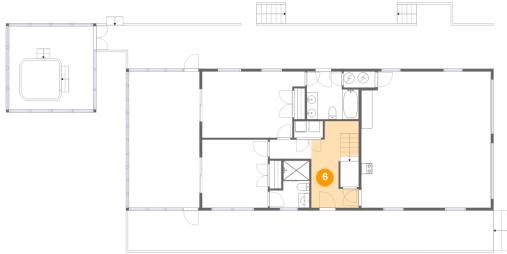


Dimensions: 15'7" x 15'4"
Area: 239 sq. ft
Counted as living area: No

Heated: No
Finished: Yes
Enclosed: No
Contiguous: Yes
Permitted: Yes
Wet space: No
Addition: No
Conversion: No

606 Rocky Branch Rd, Baker, Hardy County, West Virginia, United States, 26801

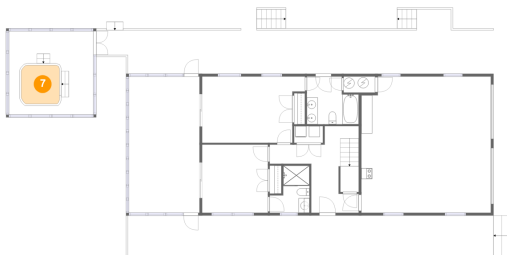
6 Floor 1 - Foyer



Dimensions: 8'9" x 15'11"
Area: 109 sq. ft
Counted as living area: Yes

Heated: Yes
Finished: Yes
Enclosed: Yes
Contiguous: Yes
Permitted: Yes
Wet space: No
Addition: No
Conversion: No

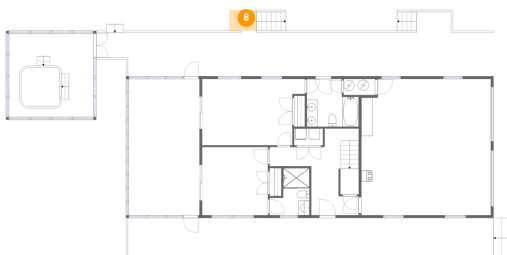
7 Floor 1 - Hot Tub



Dimensions: 7'0" x 7'1"
Area: 49 sq. ft
Counted as living area: No

Heated: No
Finished: No
Enclosed: No
Contiguous: Yes
Permitted: No
Wet space: No
Addition: No
Conversion: No

8 Floor 1 - Deck

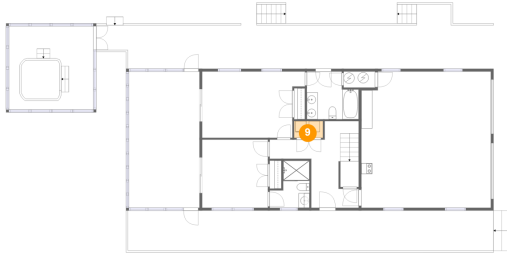


Dimensions: 5'0" x 3'10"
Area: 19 sq. ft
Counted as living area: No

Heated: No
Finished: Yes
Enclosed: No
Contiguous: Yes
Permitted: Yes
Wet space: No
Addition: No
Conversion: No

606 Rocky Branch Rd, Baker, Hardy County, West Virginia, United States, 26801

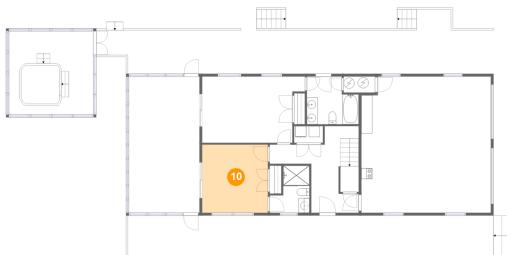
9 Floor 1 - Laundry



Dimensions: 5'3" x 3'1"
Area: 16 sq. ft
Counted as living area: Yes

Heated: Yes
Finished: Yes
Enclosed: Yes
Contiguous: Yes
Permitted: Yes
Wet space: No
Addition: No
Conversion: No

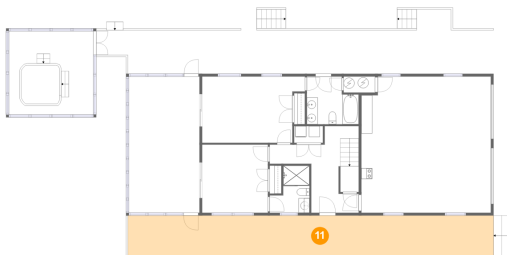
10 Floor 1 - Bedroom



Dimensions: 12'1" x 12'6"
Area: 152 sq. ft
Counted as living area: Yes

Heated: Yes
Finished: Yes
Enclosed: Yes
Contiguous: Yes
Permitted: Yes
Wet space: No
Addition: No
Conversion: No

11 Floor 1 - Porch

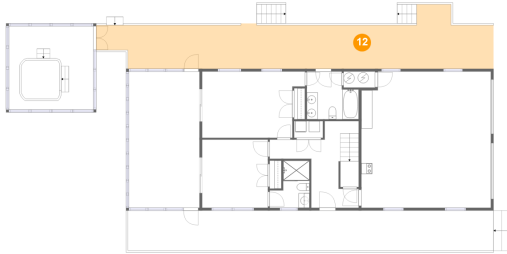


Dimensions: 67'3" x 7'4"
Area: 496 sq. ft
Counted as living area: No

Heated: No
Finished: Yes
Enclosed: No
Contiguous: Yes
Permitted: Yes
Wet space: No
Addition: No
Conversion: No

606 Rocky Branch Rd, Baker, Hardy County, West Virginia, United States, 26801

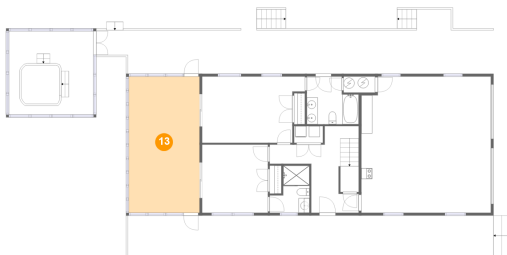
12 Floor 1 - Covered Deck



Dimensions: 73'1" x 11'10"
Area: 590 sq. ft
Counted as living area: No

Heated: No
Finished: Yes
Enclosed: No
Contiguous: Yes
Permitted: Yes
Wet space: No
Addition: No
Conversion: No

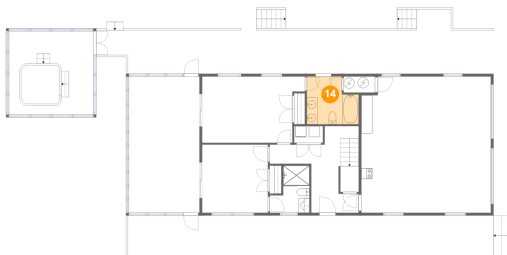
13 Floor 1 - Screened Porch



Dimensions: 13'0" x 25'1"
Area: 326 sq. ft
Counted as living area: No

Heated: No
Finished: Yes
Enclosed: No
Contiguous: Yes
Permitted: Yes
Wet space: No
Addition: No
Conversion: No

14 Floor 1 - Bath

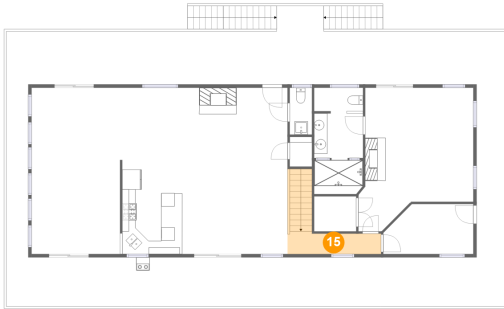


Dimensions: 9'6" x 8'9"
Area: 74 sq. ft
Counted as living area: Yes

Heated: Yes
Finished: Yes
Enclosed: Yes
Contiguous: Yes
Permitted: Yes
Wet space: Yes
Addition: No
Conversion: No

606 Rocky Branch Rd, Baker, Hardy County, West Virginia, United States, 26801

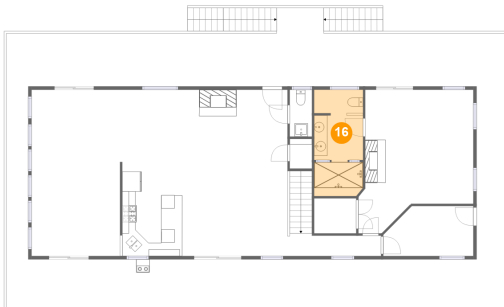
15 Floor 2 - Hall



Dimensions: 14'1" x 3'5"
Area: 79 sq. ft
Counted as living area: Yes

Heated: Yes
Finished: Yes
Enclosed: Yes
Contiguous: Yes
Permitted: Yes
Wet space: No
Addition: No
Conversion: No

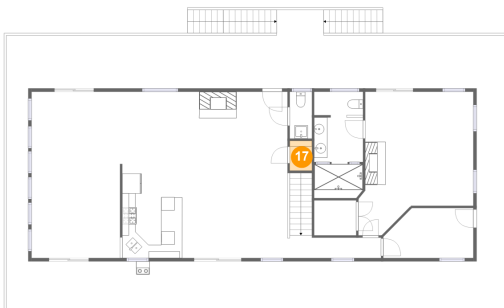
16 Floor 2 - Bath



Dimensions: 7'4" x 14'9"
Area: 115 sq. ft
Counted as living area: Yes

Heated: Yes
Finished: Yes
Enclosed: Yes
Contiguous: Yes
Permitted: Yes
Wet space: Yes
Addition: No
Conversion: No

17 Floor 2 - Pantry



Dimensions: 3'4" x 4'5"
Area: 15 sq. ft
Counted as living area: Yes

Heated: Yes
Finished: Yes
Enclosed: Yes
Contiguous: Yes
Permitted: Yes
Wet space: No
Addition: No
Conversion: No

606 Rocky Branch Rd, Baker, Hardy County, West Virginia, United States, 26801

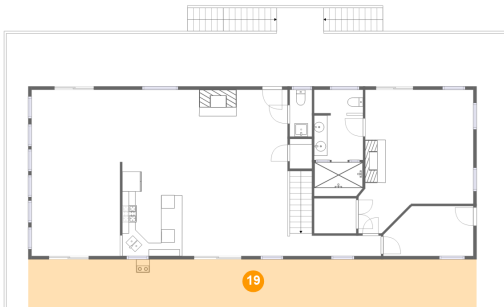
18 Floor 2 - W.I.C.



Dimensions: 6'4" x 5'3"
Area: 33 sq. ft
Counted as living area: Yes

Heated: Yes
Finished: Yes
Enclosed: Yes
Contiguous: Yes
Permitted: Yes
Wet space: No
Addition: No
Conversion: No

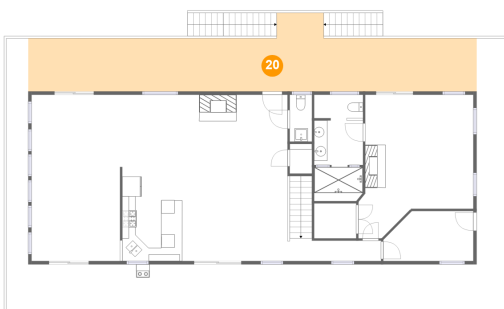
19 Floor 2 - Deck



Dimensions: 67'7" x 7'4"
Area: 500 sq. ft
Counted as living area: No

Heated: No
Finished: Yes
Enclosed: No
Contiguous: Yes
Permitted: Yes
Wet space: No
Addition: No
Conversion: No

20 Floor 2 - Covered Deck

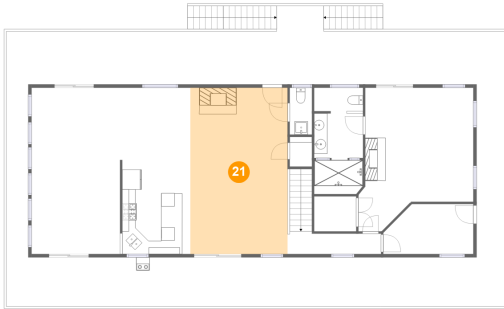


Dimensions: 67'8" x 11'10"
Area: 568 sq. ft
Counted as living area: No

Heated: No
Finished: Yes
Enclosed: No
Contiguous: Yes
Permitted: Yes
Wet space: No
Addition: No
Conversion: No

606 Rocky Branch Rd, Baker, Hardy County, West Virginia, United States, 26801

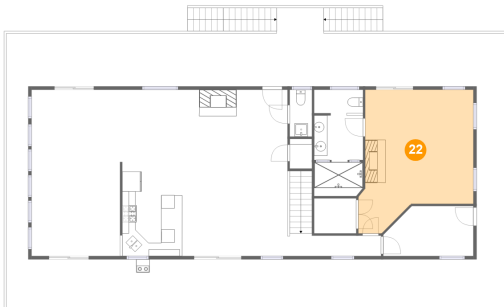
21 Floor 2 - Living Room



Dimensions: 14'8" x 25'1"
Area: 367 sq. ft
Counted as living area: Yes

Heated: Yes
Finished: Yes
Enclosed: Yes
Contiguous: Yes
Permitted: Yes
Wet space: No
Addition: No
Conversion: No

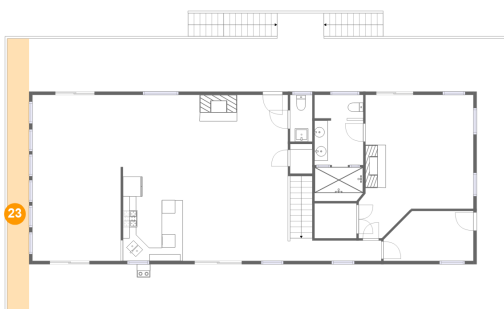
22 Floor 2 - Primary Bedroom



Dimensions: 17'4" x 21'8"
Area: 307 sq. ft
Counted as living area: Yes

Heated: Yes
Finished: Yes
Enclosed: Yes
Contiguous: Yes
Permitted: Yes
Wet space: No
Addition: No
Conversion: No

23 Floor 2 - Deck



Dimensions: 3'4" x 41'5"
Area: 137 sq. ft
Counted as living area: No

Heated: No
Finished: Yes
Enclosed: No
Contiguous: Yes
Permitted: Yes
Wet space: No
Addition: No
Conversion: No

606 Rocky Branch Rd, Baker, Hardy County, West Virginia, United States, 26801

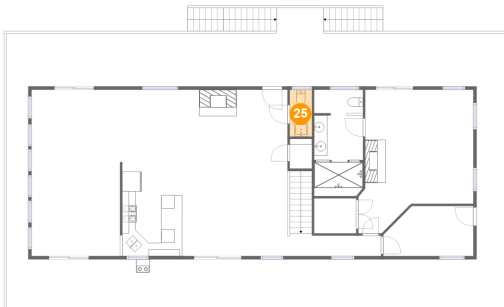
24 Floor 2 - Office



Dimensions: 13'7" x 7'6"
Area: 93 sq. ft
Counted as living area: Yes

Heated: Yes
Finished: Yes
Enclosed: Yes
Contiguous: Yes
Permitted: Yes
Wet space: No
Addition: No
Conversion: No

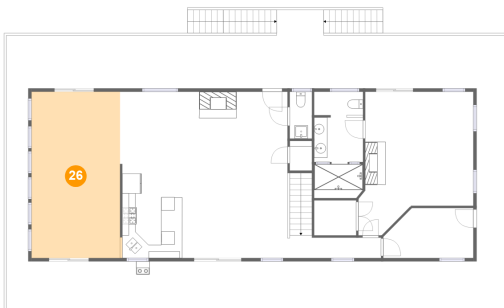
25 Floor 2 - WC



Dimensions: 3'4" x 7'1"
Area: 24 sq. ft
Counted as living area: Yes

Heated: Yes
Finished: Yes
Enclosed: Yes
Contiguous: Yes
Permitted: Yes
Wet space: Yes
Addition: No
Conversion: No

26 Floor 2 - Family Room

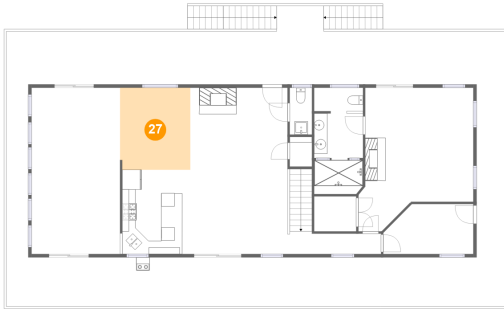


Dimensions: 13'4" x 25'1"
Area: 335 sq. ft
Counted as living area: Yes

Heated: Yes
Finished: Yes
Enclosed: Yes
Contiguous: Yes
Permitted: Yes
Wet space: No
Addition: No
Conversion: No

606 Rocky Branch Rd, Baker, Hardy County, West Virginia, United States, 26801

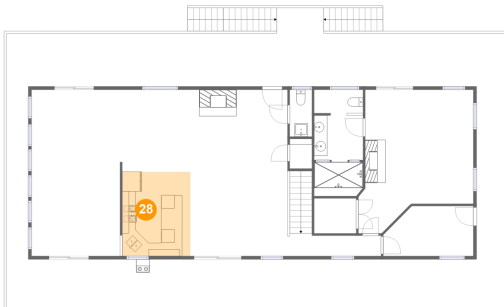
27 Floor 2 - Dining Area



Dimensions: 10'7" x 12'4"
Area: 131 sq. ft
Counted as living area: Yes

Heated: Yes
Finished: Yes
Enclosed: Yes
Contiguous: Yes
Permitted: Yes
Wet space: No
Addition: No
Conversion: No

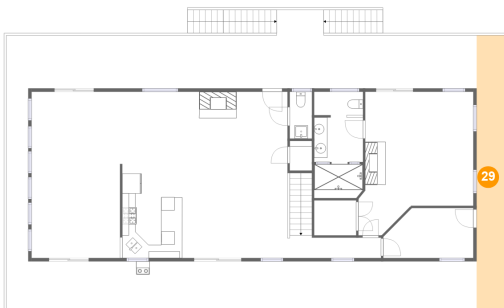
28 Floor 2 - Kitchen



Dimensions: 10'3" x 12'8"
Area: 130 sq. ft
Counted as living area: Yes

Heated: Yes
Finished: Yes
Enclosed: Yes
Contiguous: Yes
Permitted: Yes
Wet space: No
Addition: No
Conversion: No

29 Floor 2 - Deck



Dimensions: 4'4" x 41'6"
Area: 182 sq. ft
Counted as living area: No

Heated: No
Finished: Yes
Enclosed: No
Contiguous: Yes
Permitted: Yes
Wet space: No
Addition: No
Conversion: No