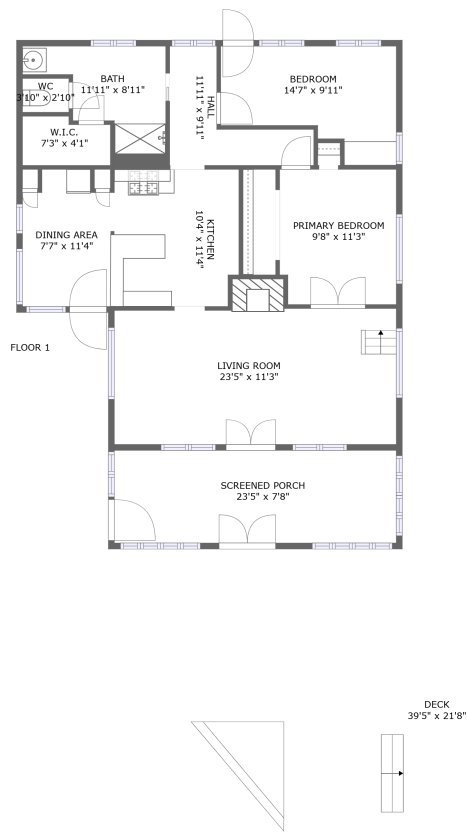


Home report

49 Riverside Drive, Allenspark Vicinity, Lyons, Boulder County, Colorado, United States, 80540



Total Area: 852 sq. ft

Floor 1: 852 sq. ft

Excluded: WC 13 sq. ft, Bath 73 sq. ft, Screened porch 180 sq. ft, Deck 809 sq. ft, Walls: 85 sq. ft

Property summary

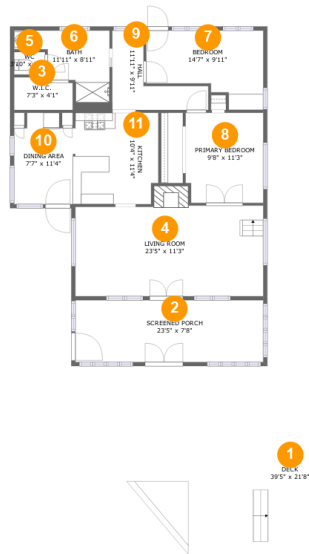
 **1** Floors

 **2** Bedrooms

 **1** Bathrooms

Home report

49 Riverside Drive, Allenspark Vicinity, Lyons, Boulder County, Colorado, United States, 80540



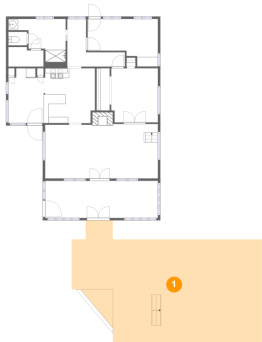
Room dimensions

Floor 1 Total:852sqft Excluded: 1075sqft

#		Max Dimensions	sqft	Included
1	Deck	39'5" x 21'8"	809 sq. ft	No
2	Screened Porch	23'5" x 7'8"	180 sq. ft	No
3	W.I.C.	7'3" x 4'1"	27 sq. ft	Yes
4	Living Room	23'5" x 11'3"	273 sq. ft	Yes
5	WC	3'10" x 2'10"	11 sq. ft	No
6	Bath	11'11" x 8'11"	73 sq. ft	No
7	Bedroom	14'7" x 9'11"	113 sq. ft	Yes
8	Primary Bedroom	9'8" x 11'3"	107 sq. ft	Yes
9	Hall	11'11" x 9'11"	63 sq. ft	Yes
10	Dining Area	7'7" x 11'4"	80 sq. ft	Yes
11	Kitchen	10'4" x 11'4"	115 sq. ft	Yes

49 Riverside Drive, Allenspark Vicinity, Lyons, Boulder County,
Colorado, United States, 80540

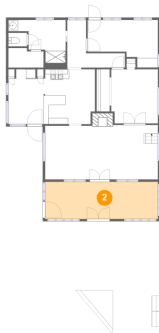
1 Floor 1 - Deck



Max Dimensions: 39'5" x
21'8"
Calculated Area: 809 sq. ft
Included: No

Heated: No
Finished: Yes
Enclosed: No
Contiguous:
Yes
Permitted: Yes
Wet space: No
Addition: No
Conversion: No

2 Floor 1 - Screened Porch



Max Dimensions: 23'5" x
7'8"
Calculated Area: 180 sq. ft
Included: No

Heated: No
Finished: Yes
Enclosed: No
Contiguous:
Yes
Permitted: Yes
Wet space: No
Addition: No
Conversion: No

49 Riverside Drive, Allenspark Vicinity, Lyons, Boulder County,
Colorado, United States, 80540

3 Floor 1 - W.I.C.



Max Dimensions: 7'3" x 4'1"
Calculated Area: 27 sq. ft
Included: No

Heated: Yes
Finished: Yes
Enclosed: Yes
Contiguous: No
Permitted: Yes
Wet space: No
Addition: No
Conversion: No

4 Floor 1 - Living Room



Max Dimensions: 23'5" x 11'3"
Calculated Area: 273 sq. ft
Included: Yes

Heated: Yes
Finished: Yes
Enclosed: Yes
Contiguous: Yes
Permitted: Yes
Wet space: No
Addition: No
Conversion: No

5 Floor 1 - WC



Max Dimensions: 3'10" x 2'10"
Calculated Area: 11 sq. ft
Included: No

Heated: Yes
Finished: No
Enclosed: Yes
Contiguous: Yes
Permitted: Yes
Wet space: Yes
Addition: No
Conversion: No

49 Riverside Drive, Allenspark Vicinity, Lyons, Boulder County,
Colorado, United States, 80540

6 Floor 1 - Bath



Max Dimensions: 11'11" x 8'11"
Calculated Area: 73 sq. ft
Included: No

Heated: Yes
Finished: No
Enclosed: Yes
Contiguous: Yes
Permitted: Yes
Wet space: Yes
Addition: No
Conversion: No

7 Floor 1 - Bedroom



Max Dimensions: 14'7" x 9'11"
Calculated Area: 113 sq. ft
Included: Yes

Heated: Yes
Finished: Yes
Enclosed: Yes
Contiguous: Yes
Permitted: Yes
Wet space: No
Addition: No
Conversion: No

8 Floor 1 - Primary Bedroom



Max Dimensions: 9'8" x 11'3"
Calculated Area: 107 sq. ft
Included: Yes

Heated: Yes
Finished: Yes
Enclosed: Yes
Contiguous: Yes
Permitted: Yes
Wet space: No
Addition: No
Conversion: No

49 Riverside Drive, Allenspark Vicinity, Lyons, Boulder County,
Colorado, United States, 80540

9 Floor 1 - Hall



Max Dimensions: 11'11" x 9'11"
Calculated Area: 63 sq. ft
Included: Yes

Heated: Yes
Finished: Yes
Enclosed: Yes
Contiguous: Yes
Permitted: Yes
Wet space: No
Addition: No
Conversion: No

10 Floor 1 - Dining Area



Max Dimensions: 7'7" x 11'4"
Calculated Area: 80 sq. ft
Included: Yes

Heated: Yes
Finished: Yes
Enclosed: Yes
Contiguous: Yes
Permitted: Yes
Wet space: No
Addition: No
Conversion: No

11 Floor 1 - Kitchen



Max Dimensions: 10'4" x 11'4"
Calculated Area: 115 sq. ft
Included: Yes

Heated: Yes
Finished: Yes
Enclosed: Yes
Contiguous: Yes
Permitted: Yes
Wet space: No
Addition: No
Conversion: No