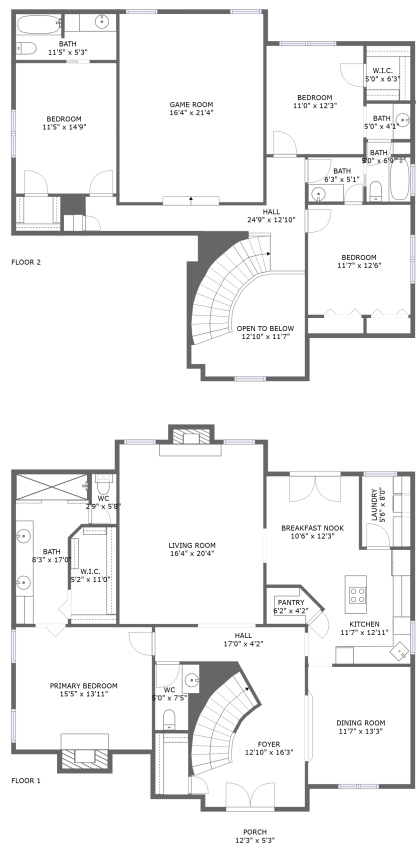




Home report


2411 West Pilgrim Estates Drive, Texas City, Texas 77590,  
United States




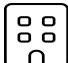
Property summary


**0**  
Garages


**4**  
Bedrooms

**3**  
Bathrooms

**1**  
Half baths

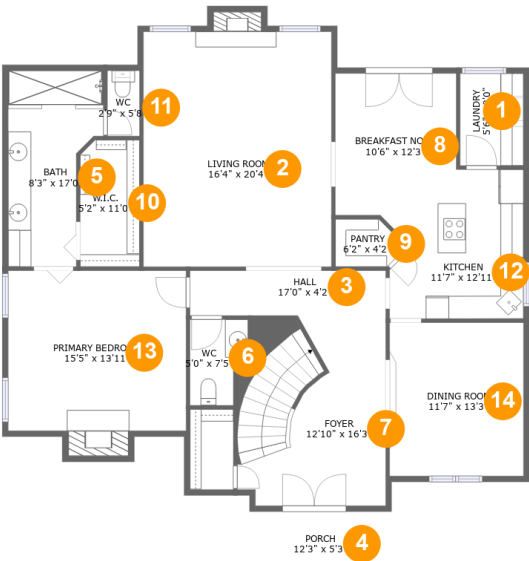
**2**  
Floors

**3,030**  
Gross living  
area sqft

**3,236**  
Total sqft

Home report

2411 West Pilgrim Estates Drive, Texas City, Texas 77590,  
United States



Room dimensions

Floor 1 Total sqft: 1767    Living area: 1680

#		Max Dimensions	sqft	Included
1	Laundry	5'6" x 8'0"	44 sq. ft	Yes
2	Living Room	16'4" x 20'4"	339 sq. ft	Yes
3	Hall	17'0" x 4'2"	68 sq. ft	Yes
4	Porch	12'3" x 5'3"	64 sq. ft	No
5	Bath	8'3" x 17'0"	115 sq. ft	Yes
6	WC	5'0" x 7'5"	32 sq. ft	Yes
7	Foyer	12'10" x 16'3"	198 sq. ft	Yes
8	Breakfast Nook	10'6" x 12'3"	129 sq. ft	Yes
9	Pantry	6'2" x 4'2"	21 sq. ft	Yes
10	W.I.C.	5'2" x 11'0"	56 sq. ft	Yes
11	WC	2'9" x 5'8"	16 sq. ft	Yes

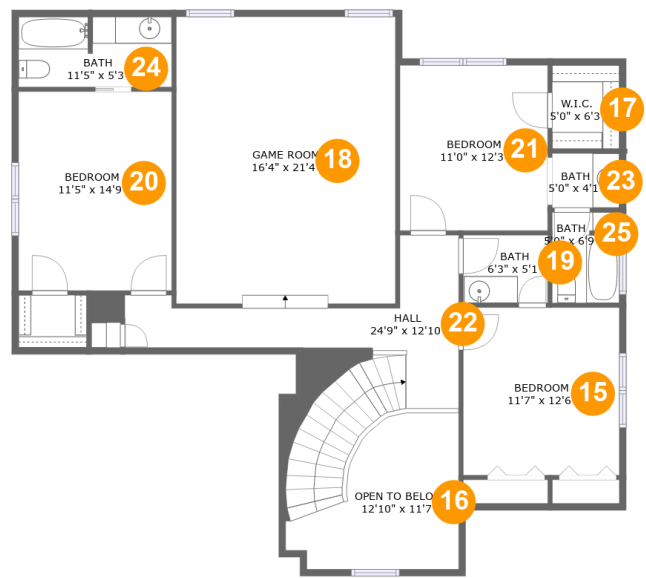
Home report

2411 West Pilgrim Estates Drive, Texas City, Texas 77590,  
United States

#		Max Dimensions	sqft	Included
12	Kitchen	11'7" x 12'11"	124 sq. ft	Yes
13	Primary Bedroom	15'5" x 13'11"	225 sq. ft	Yes
14	Dining Room	11'7" x 13'3"	154 sq. ft	Yes

Home report

2411 West Pilgrim Estates Drive, Texas City, Texas 77590,  
United States



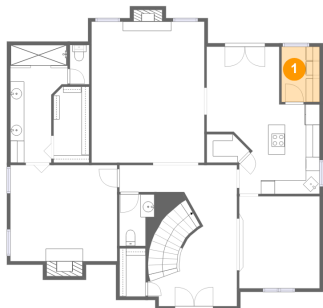
Room dimensions

Floor 2 Total sqft: 1469    Living area: 1350

#		Max Dimensions	sqft	Included
15	Bedroom	11'7" x 12'6"	145 sq. ft	Yes
16	Open To Below	12'10" x 11'7"	108 sq. ft	No
17	W.I.C.	5'0" x 6'3"	31 sq. ft	Yes
18	Game Room	16'4" x 21'4"	348 sq. ft	Yes
19	Bath	6'3" x 5'1"	32 sq. ft	Yes
20	Bedroom	11'5" x 14'9"	168 sq. ft	Yes
21	Bedroom	11'0" x 12'3"	135 sq. ft	Yes
22	Hall	24'9" x 12'10"	203 sq. ft	Yes
23	Bath	5'0" x 4'1"	20 sq. ft	Yes
24	Bath	11'5" x 5'3"	59 sq. ft	Yes
25	Bath	5'0" x 6'9"	33 sq. ft	Yes

2411 West Pilgrim Estates Drive, Texas City, Texas 77590,  
United States

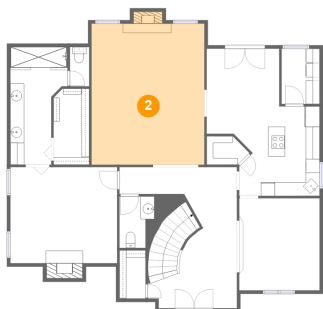
1 Floor 1 - Laundry



Max Dimensions: 5'6" x 8'0"  
Calculated Area: 44 sq. ft  
Included: Yes

Heated: Yes  
Finished: Yes  
Enclosed: Yes  
Contiguous: Yes  
Permitted: Yes  
Wet space: No  
Addition: No  
Conversion: No

2 Floor 1 - Living Room



Max Dimensions: 16'4" x 20'4"  
Calculated Area: 339 sq. ft  
Included: Yes

Heated: Yes  
Finished: Yes  
Enclosed: Yes  
Contiguous: Yes  
Permitted: Yes  
Wet space: No  
Addition: No  
Conversion: No

2411 West Pilgrim Estates Drive, Texas City, Texas 77590,  
United States

### 3 Floor 1 - Hall



Max Dimensions: 17'0" x 4'2"  
Calculated Area: 68 sq. ft  
Included: Yes

Heated: Yes  
Finished: Yes  
Enclosed: Yes  
Contiguous: Yes  
Permitted: Yes  
Wet space: No  
Addition: No  
Conversion: No

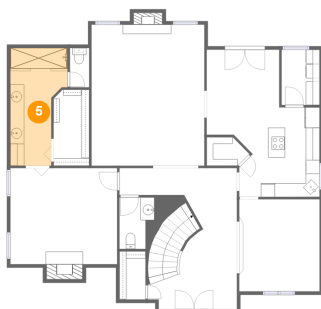
### 4 Floor 1 - Porch



Max Dimensions: 12'3" x 5'3"  
Calculated Area: 64 sq. ft  
Included: No

Heated: No  
Finished: Yes  
Enclosed: No  
Contiguous: Yes  
Permitted: Yes  
Wet space: No  
Addition: No  
Conversion: No

### 5 Floor 1 - Bath



Max Dimensions: 8'3" x 17'0"  
Calculated Area: 115 sq. ft  
Included: Yes

Heated: Yes  
Finished: Yes  
Enclosed: Yes  
Contiguous: Yes  
Permitted: Yes  
Wet space: Yes  
Addition: No  
Conversion: No

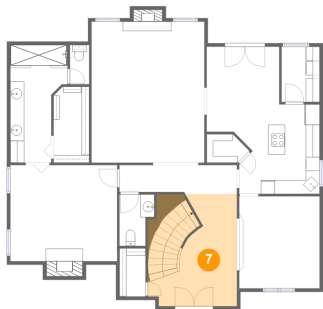
6 Floor 1 - WC



Max Dimensions: 5'0" x 7'5"  
Calculated Area: 32 sq. ft  
Included: Yes

Heated: Yes  
Finished: Yes  
Enclosed: Yes  
Contiguous: Yes  
Permitted: Yes  
Wet space: Yes  
Addition: No  
Conversion: No

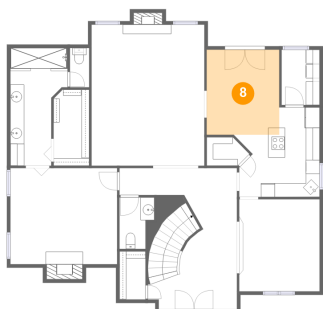
7 Floor 1 - Foyer



Max Dimensions: 12'10" x 16'3"  
Calculated Area: 198 sq. ft  
Included: Yes

Heated: Yes  
Finished: Yes  
Enclosed: Yes  
Contiguous: Yes  
Permitted: Yes  
Wet space: No  
Addition: No  
Conversion: No

8 Floor 1 - Breakfast Nook



Max Dimensions: 10'6" x 12'3"  
Calculated Area: 129 sq. ft  
Included: Yes

Heated: Yes  
Finished: Yes  
Enclosed: Yes  
Contiguous: Yes  
Permitted: Yes  
Wet space: No  
Addition: No  
Conversion: No

2411 West Pilgrim Estates Drive, Texas City, Texas 77590,  
United States

## 9 Floor 1 - Pantry



Max Dimensions: 6'2" x 4'2"  
Calculated Area: 21 sq. ft  
Included: Yes

Heated: Yes  
Finished: Yes  
Enclosed: Yes  
Contiguous: Yes  
Permitted: Yes  
Wet space: No  
Addition: No  
Conversion: No

## 10 Floor 1 - W.I.C.



Max Dimensions: 5'2" x  
11'0"  
Calculated Area: 56 sq. ft  
Included: Yes

Heated: Yes  
Finished: Yes  
Enclosed: Yes  
Contiguous:  
Yes  
Permitted: Yes  
Wet space: No  
Addition: No  
Conversion: No

## 11 Floor 1 - WC



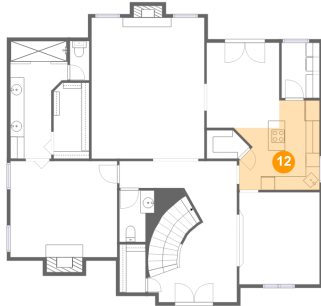
Max Dimensions: 2'9" x 5'8"  
Calculated Area: 16 sq. ft  
Included: Yes

Heated: Yes  
Finished: Yes  
Enclosed: Yes  
Contiguous: Yes  
Permitted: Yes  
Wet space: Yes  
Addition: No  
Conversion: No



2411 West Pilgrim Estates Drive, Texas City, Texas 77590,  
United States

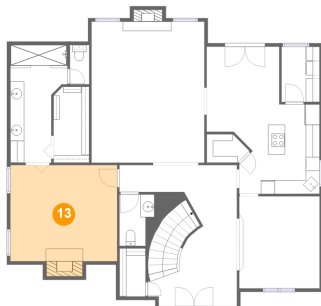
## 12 Floor 1 - Kitchen



Max Dimensions: 11'7" x 12'11"  
Calculated Area: 124 sq. ft  
Included: Yes

Heated: Yes  
Finished: Yes  
Enclosed: Yes  
Contiguous: Yes  
Permitted: Yes  
Wet space: No  
Addition: No  
Conversion: No

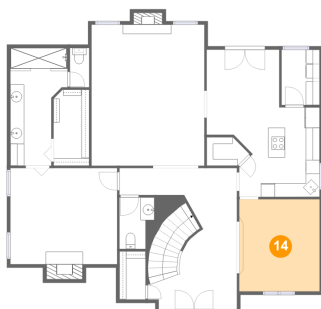
## 13 Floor 1 - Primary Bedroom



Max Dimensions: 15'5" x 13'11"  
Calculated Area: 225 sq. ft  
Included: Yes

Heated: Yes  
Finished: Yes  
Enclosed: Yes  
Contiguous: Yes  
Permitted: Yes  
Wet space: No  
Addition: No  
Conversion: No

## 14 Floor 1 - Dining Room



Max Dimensions: 11'7" x 13'3"  
Calculated Area: 154 sq. ft  
Included: Yes

Heated: Yes  
Finished: Yes  
Enclosed: Yes  
Contiguous: Yes  
Permitted: Yes  
Wet space: No  
Addition: No  
Conversion: No

Home report

2411 West Pilgrim Estates Drive, Texas City, Texas 77590,  
United States

**15** Floor 2 - Bedroom

---

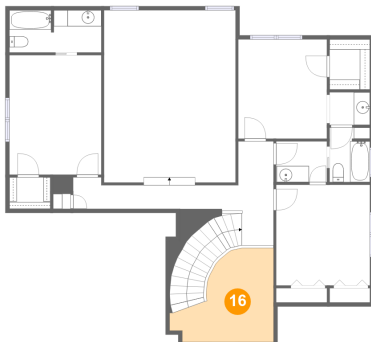


Max Dimensions: 11'7" x 12'6"  
Calculated Area: 145 sq. ft  
Included: Yes

Heated: Yes  
Finished: Yes  
Enclosed: Yes  
Contiguous: Yes  
Permitted: Yes  
Wet space: No  
Addition: No  
Conversion: No

**16** Floor 2 - Open To Below

---

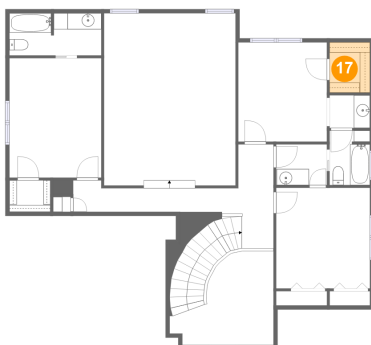


Max Dimensions: 12'10" x 11'7"  
Calculated Area: 108 sq. ft  
Included: No

Heated: No  
Finished: No  
Enclosed: No  
Contiguous: Yes  
Permitted: No  
Wet space: No  
Addition: No  
Conversion: No

**17** Floor 2 - W.I.C.

---



Max Dimensions: 5'0" x 6'3"  
Calculated Area: 31 sq. ft  
Included: Yes

Heated: Yes  
Finished: Yes  
Enclosed: Yes  
Contiguous: Yes  
Permitted: Yes  
Wet space: No  
Addition: No  
Conversion: No

18 Floor 2 - Game Room



Max Dimensions: 16'4" x 21'4"  
Calculated Area: 348 sq. ft  
Included: Yes

Heated: Yes  
Finished: Yes  
Enclosed: Yes  
Contiguous: Yes  
Permitted: Yes  
Wet space: No  
Addition: No  
Conversion: No

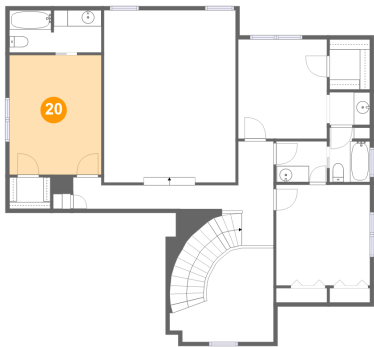
19 Floor 2 - Bath



Max Dimensions: 6'3" x 5'1"  
Calculated Area: 32 sq. ft  
Included: Yes

Heated: Yes  
Finished: Yes  
Enclosed: Yes  
Contiguous: Yes  
Permitted: Yes  
Wet space: Yes  
Addition: No  
Conversion: No

20 Floor 2 - Bedroom



Max Dimensions: 11'5" x 14'9"  
Calculated Area: 168 sq. ft  
Included: Yes

Heated: Yes  
Finished: Yes  
Enclosed: Yes  
Contiguous: Yes  
Permitted: Yes  
Wet space: No  
Addition: No  
Conversion: No

2411 West Pilgrim Estates Drive, Texas City, Texas 77590,  
United States

## 21 Floor 2 - Bedroom



Max Dimensions: 11'0" x 12'3"  
Calculated Area: 135 sq. ft  
Included: Yes

Heated: Yes  
Finished: Yes  
Enclosed: Yes  
Contiguous: Yes  
Permitted: Yes  
Wet space: No  
Addition: No  
Conversion: No

## 22 Floor 2 - Hall



Max Dimensions: 24'9" x 12'10"  
Calculated Area: 203 sq. ft  
Included: Yes

Heated: Yes  
Finished: Yes  
Enclosed: Yes  
Contiguous: Yes  
Permitted: Yes  
Wet space: No  
Addition: No  
Conversion: No

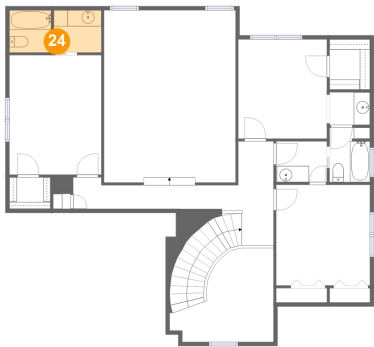
## 23 Floor 2 - Bath



Max Dimensions: 5'0" x 4'1"  
Calculated Area: 20 sq. ft  
Included: Yes

Heated: Yes  
Finished: Yes  
Enclosed: Yes  
Contiguous: Yes  
Permitted: Yes  
Wet space: Yes  
Addition: No  
Conversion: No

24 Floor 2 - Bath



Max Dimensions: 11'5" x 5'3"  
Calculated Area: 59 sq. ft  
Included: Yes

Heated: Yes  
Finished: Yes  
Enclosed: Yes  
Contiguous: Yes  
Permitted: Yes  
Wet space: Yes  
Addition: No  
Conversion: No

25 Floor 2 - Bath



Max Dimensions: 5'0" x 6'9"  
Calculated Area: 33 sq. ft  
Included: Yes

Heated: Yes  
Finished: Yes  
Enclosed: Yes  
Contiguous: Yes  
Permitted: Yes  
Wet space: Yes  
Addition: No  
Conversion: No