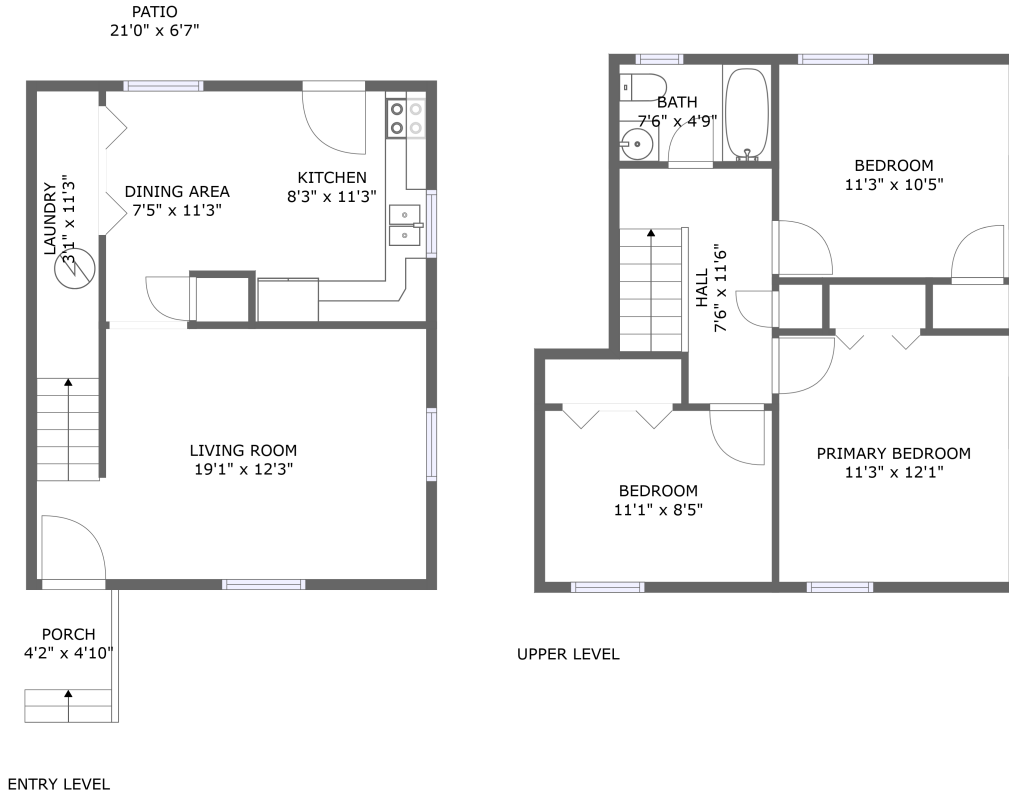



1139 12th Street Southeast, Morningside, Roanoke, Roanoke city, Virginia, United States, 24013



Property summary

 **0** Garages

 **3** Bedrooms

 **1** Bathrooms

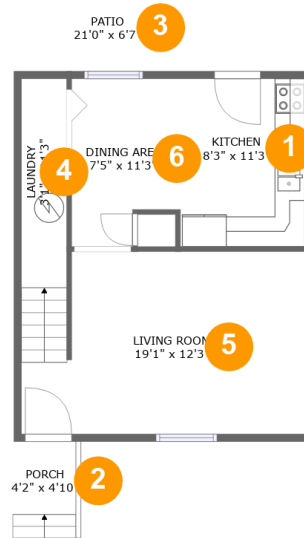
 **0** Half baths

 **2** Floors

 **1,062** Gross living area sqft

 **1,208** Total sqft

1139 12th Street Southeast, Morningside, Roanoke, Roanoke city, Virginia, United States, 24013



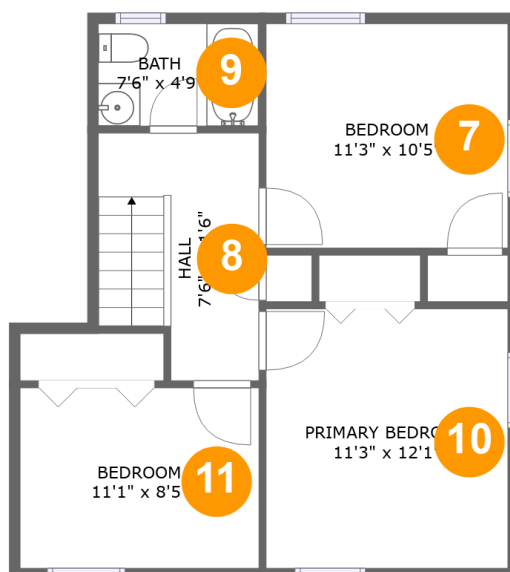
Room dimensions

Floor 1

Total sqft: 639 Living area: 493

#		Dimensions	sqft	Counted as living area
1	Kitchen	8'3" x 11'3"	94 sq. ft	Yes
2	Porch	4'2" x 4'10"	20 sq. ft	No
3	Patio	21'0" x 6'7"	126 sq. ft	No
4	Laundry	3'1" x 11'3"	34 sq. ft	Yes
5	Living Room	19'1" x 12'3"	232 sq. ft	Yes
6	Dining Area	7'5" x 11'3"	75 sq. ft	Yes

1139 12th Street Southeast, Morningside, Roanoke,
Roanoke city, Virginia, United States, 24013



Room dimensions

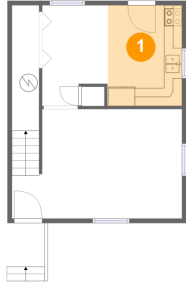
Floor 2

Total sqft: 569 Living area: 569

#		Dimensions	sqft	Counted as living area
7	Bedroom	11'3" x 10'5"	117 sq. ft	Yes
8	Hall	7'6" x 11'6"	77 sq. ft	Yes
9	Bath	7'6" x 4'9"	36 sq. ft	Yes
10	Primary Bedroom	11'3" x 12'1"	136 sq. ft	Yes
11	Bedroom	11'1" x 8'5"	93 sq. ft	Yes

1139 12th Street Southeast, Morningside, Roanoke, Roanoke city, Virginia, United States, 24013

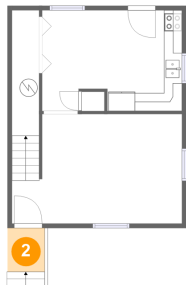
1 Floor 1 - Kitchen



Dimensions: 8'3" x 11'3"
Area: 94 sq. ft
Counted as living area: Yes

Heated: Yes
Finished: Yes
Enclosed: Yes
Contiguous: Yes
Permitted: Yes
Wet space: No
Addition: No
Conversion: No

2 Floor 1 - Porch

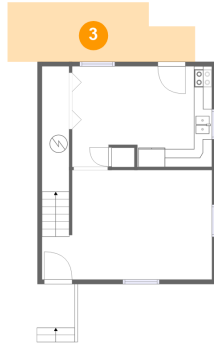


Dimensions: 4'2" x 4'10"
Area: 20 sq. ft
Counted as living area: No

Heated: No
Finished: Yes
Enclosed: No
Contiguous: Yes
Permitted: Yes
Wet space: No
Addition: No
Conversion: No

1139 12th Street Southeast, Morningside, Roanoke,
Roanoke city, Virginia, United States, 24013

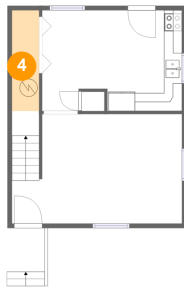
3 Floor 1 - Patio



Dimensions: 21'0" x 6'7"
Area: 126 sq. ft
Counted as living area: No

Heated: No
Finished: Yes
Enclosed: No
Contiguous: Yes
Permitted: Yes
Wet space: No
Addition: No
Conversion: No

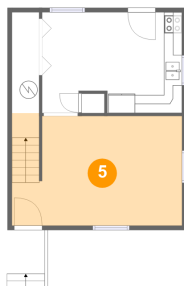
4 Floor 1 - Laundry



Dimensions: 3'1" x 11'3"
Area: 34 sq. ft
Counted as living area: Yes

Heated: Yes
Finished: Yes
Enclosed: Yes
Contiguous: Yes
Permitted: Yes
Wet space: No
Addition: No
Conversion: No

5 Floor 1 - Living Room



Dimensions: 19'1" x 12'3"
Area: 232 sq. ft
Counted as living area: Yes

Heated: Yes
Finished: Yes
Enclosed: Yes
Contiguous: Yes
Permitted: Yes
Wet space: No
Addition: No
Conversion: No

**1139 12th Street Southeast, Morningside, Roanoke,
Roanoke city, Virginia, United States, 24013**

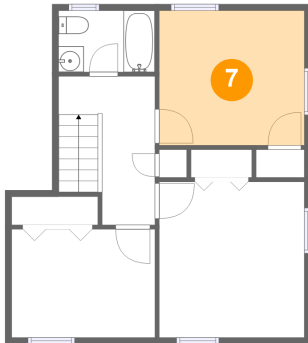
6 Floor 1 - Dining Area



Dimensions: 7'5" x 11'3"
Area: 75 sq. ft
Counted as living area: Yes

Heated: Yes
Finished: Yes
Enclosed: Yes
Contiguous: Yes
Permitted: Yes
Wet space: No
Addition: No
Conversion: No

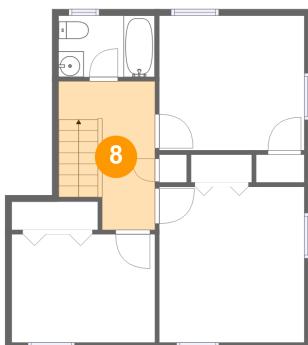
7 Floor 2 - Bedroom



Dimensions: 11'3" x 10'5"
Area: 117 sq. ft
Counted as living area: Yes

Heated: Yes
Finished: Yes
Enclosed: Yes
Contiguous: Yes
Permitted: Yes
Wet space: No
Addition: No
Conversion: No

8 Floor 2 - Hall

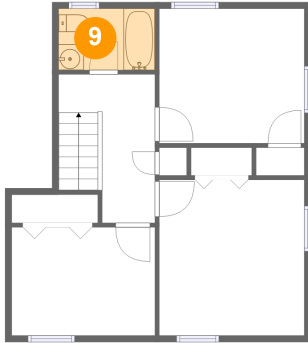


Dimensions: 7'6" x 11'6"
Area: 77 sq. ft
Counted as living area: Yes

Heated: Yes
Finished: Yes
Enclosed: Yes
Contiguous: Yes
Permitted: Yes
Wet space: No
Addition: No
Conversion: No

**1139 12th Street Southeast, Morningside, Roanoke,
Roanoke city, Virginia, United States, 24013**

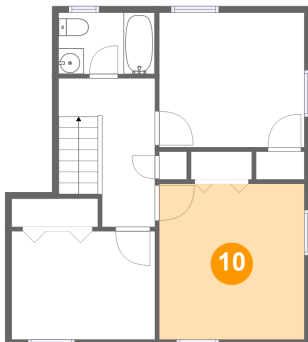
9 Floor 2 - Bath



Dimensions: 7'6" x 4'9"
Area: 36 sq. ft
Counted as living area: Yes

Heated: Yes
Finished: Yes
Enclosed: Yes
Contiguous: Yes
Permitted: Yes
Wet space: Yes
Addition: No
Conversion: No

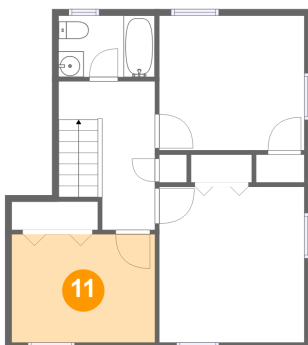
10 Floor 2 - Primary Bedroom



Dimensions: 11'3" x 12'1"
Area: 136 sq. ft
Counted as living area: Yes

Heated: Yes
Finished: Yes
Enclosed: Yes
Contiguous: Yes
Permitted: Yes
Wet space: No
Addition: No
Conversion: No

11 Floor 2 - Bedroom



Dimensions: 11'1" x 8'5"
Area: 93 sq. ft
Counted as living area: Yes

Heated: Yes
Finished: Yes
Enclosed: Yes
Contiguous: Yes
Permitted: Yes
Wet space: No
Addition: No
Conversion: No