

Ian Ho

Royal Pacific Realty (Kingsway)
778-228-5148
ianho@royalpacific.com

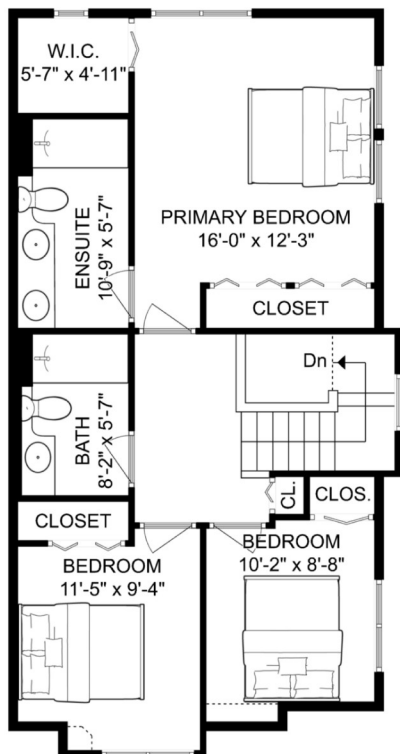
56 - 6888 Robson Drive
Richmond

INTERIOR LIVING SPACE	(sq.ft.)
Upper Floor	729
Main Floor	734
Lower Floor	335
Total Area	1,798

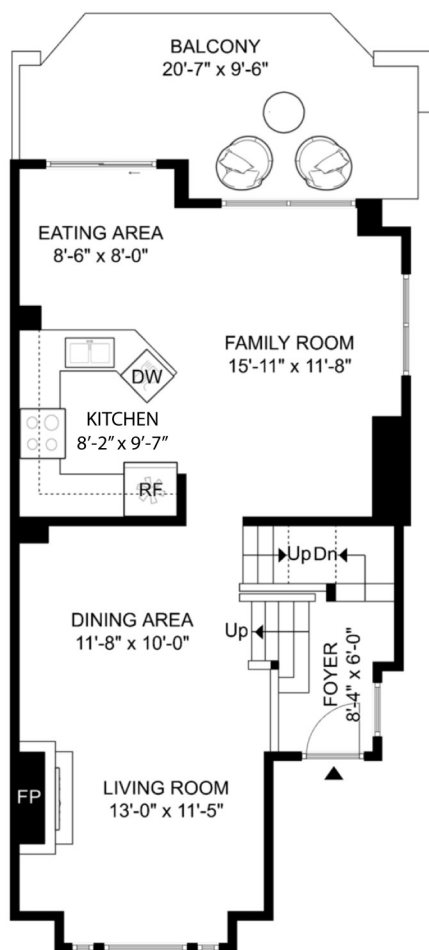
AUXILIARY	
Balcony	165
Garage	374
Combined Total	2,337

4 bed 3 bath 2 parking

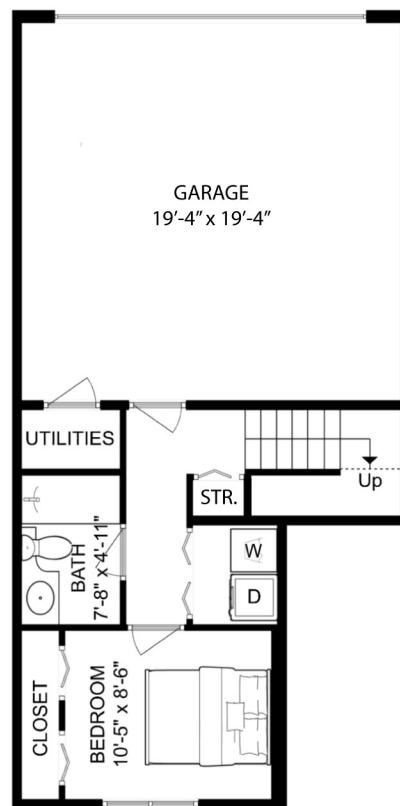
UPPER FLOOR
729 sq.ft. | Ceiling Height: 8'-0"



MAIN FLOOR
734 sq.ft. | Ceiling Height: 9'-0" to 12'-3"



LOWER FLOOR
335 sq.ft. | Ceiling Height: 8'-0"



ROYAL PACIFIC
REALTY

The floor plan is not suitable for architectural/construction and is covered under E&O. All right reserved for Virtualized Studio. User shall not publish and distribute such material and/or incorporate it in other works in any form.



VIRTUALIZED
studio