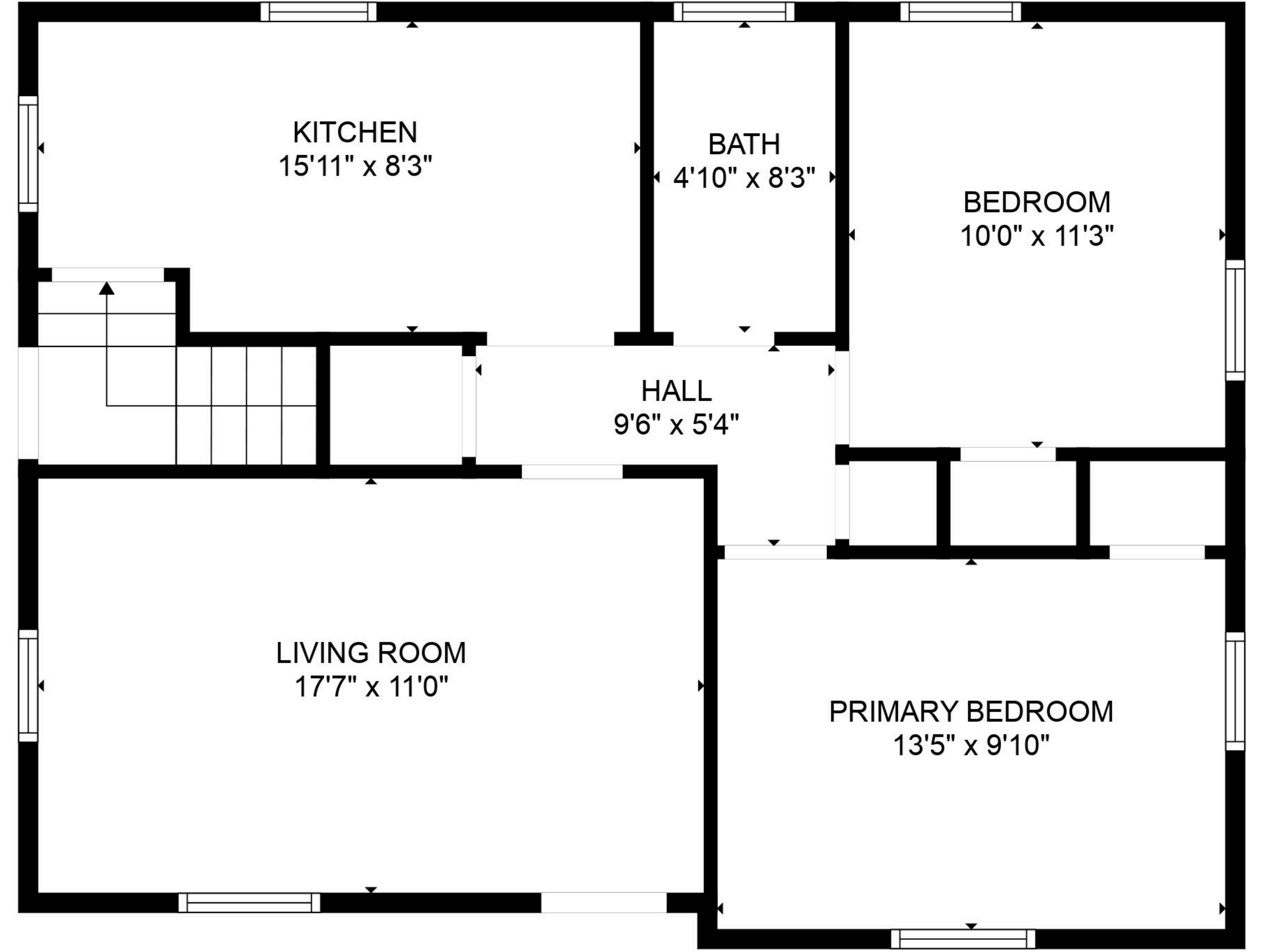


BASEMENT  
31'5" x 24'1"

FLOOR 1



KITCHEN  
15'11" x 8'3"

BATH  
4'10" x 8'3"

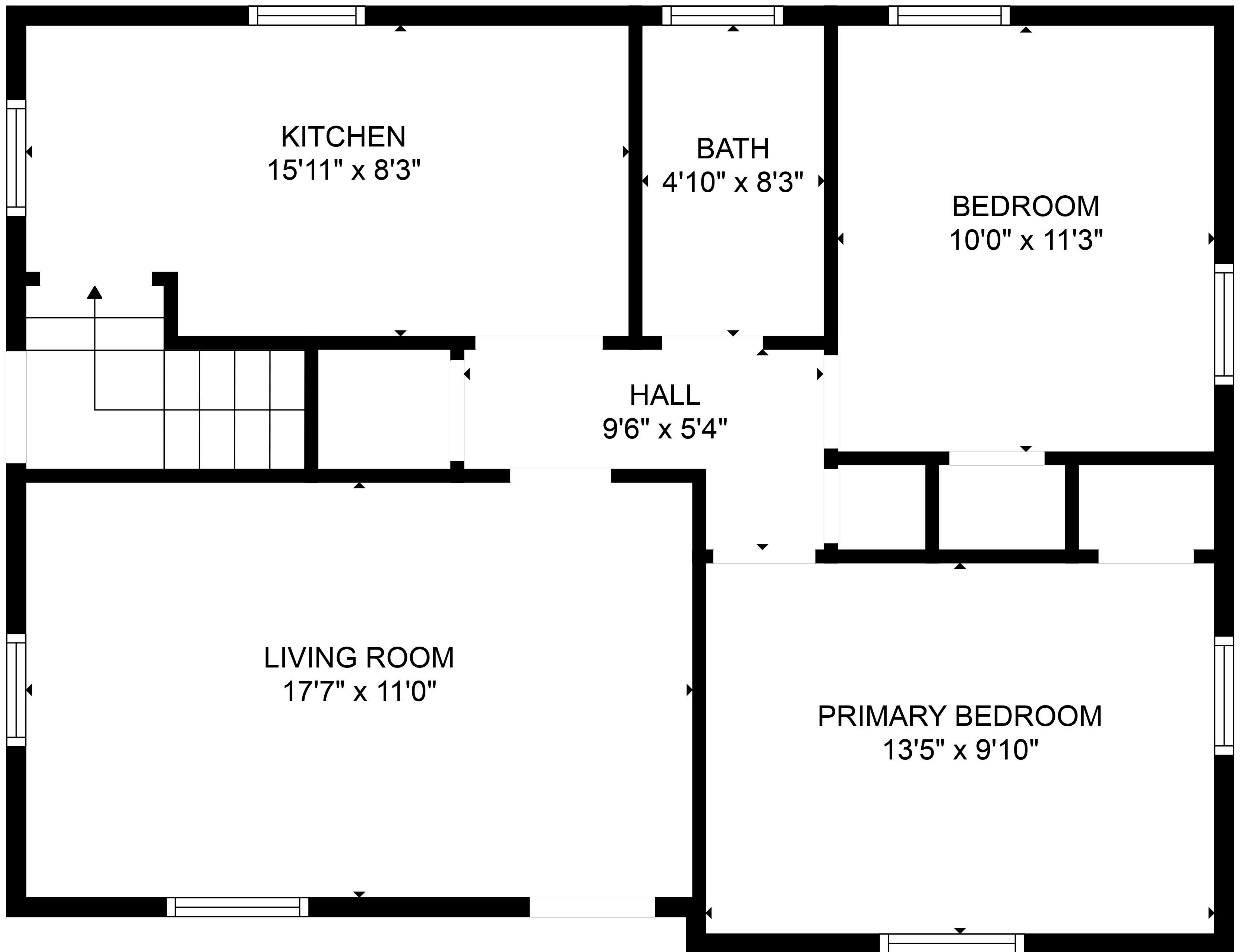
BEDROOM  
10'0" x 11'3"

HALL  
9'6" x 5'4"

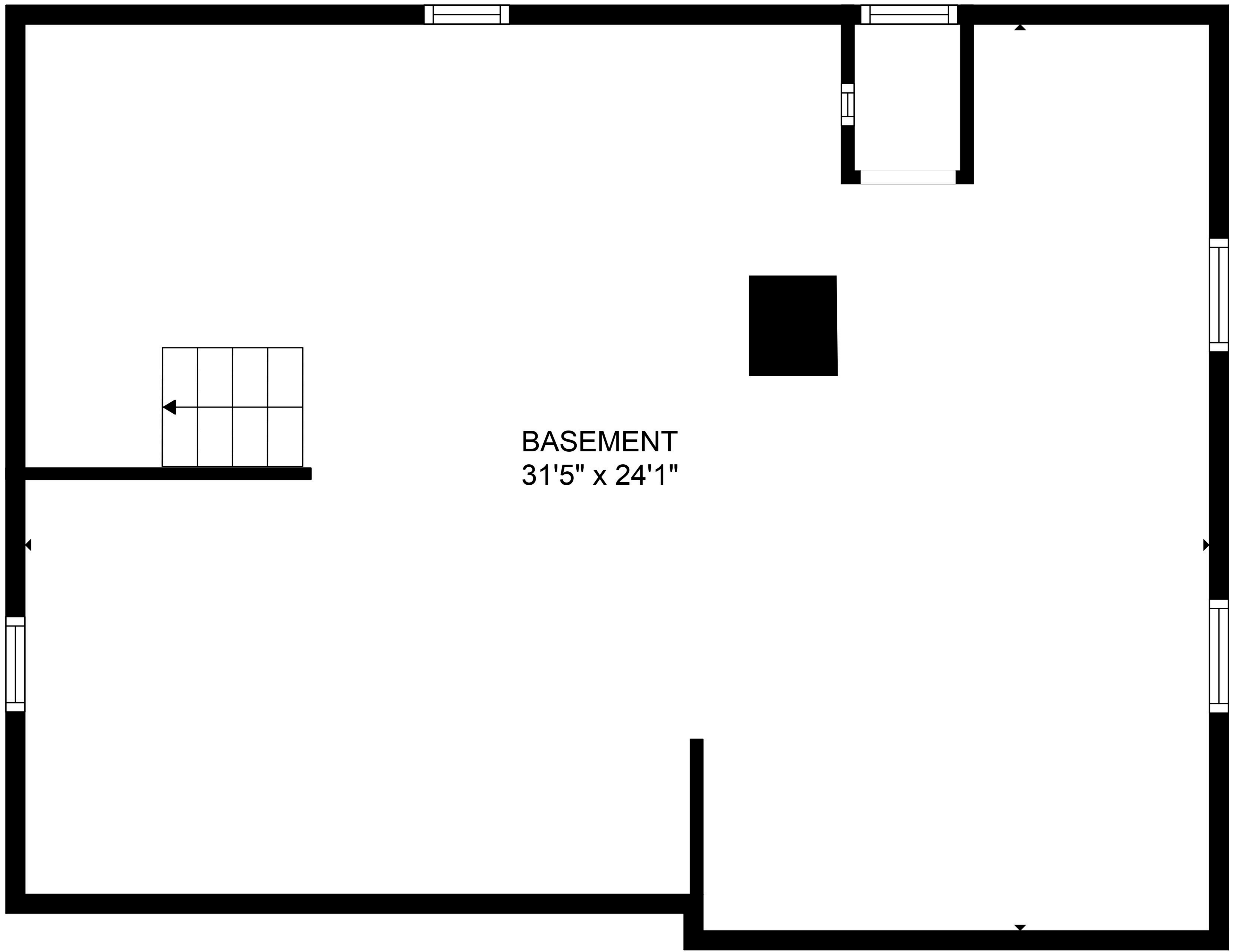
LIVING ROOM  
17'7" x 11'0"

PRIMARY BEDROOM  
13'5" x 9'10"

FLOOR 2



Measurements and sqft are approximate and not guaranteed. Actual may vary.



BASEMENT  
31'5" x 24'1"