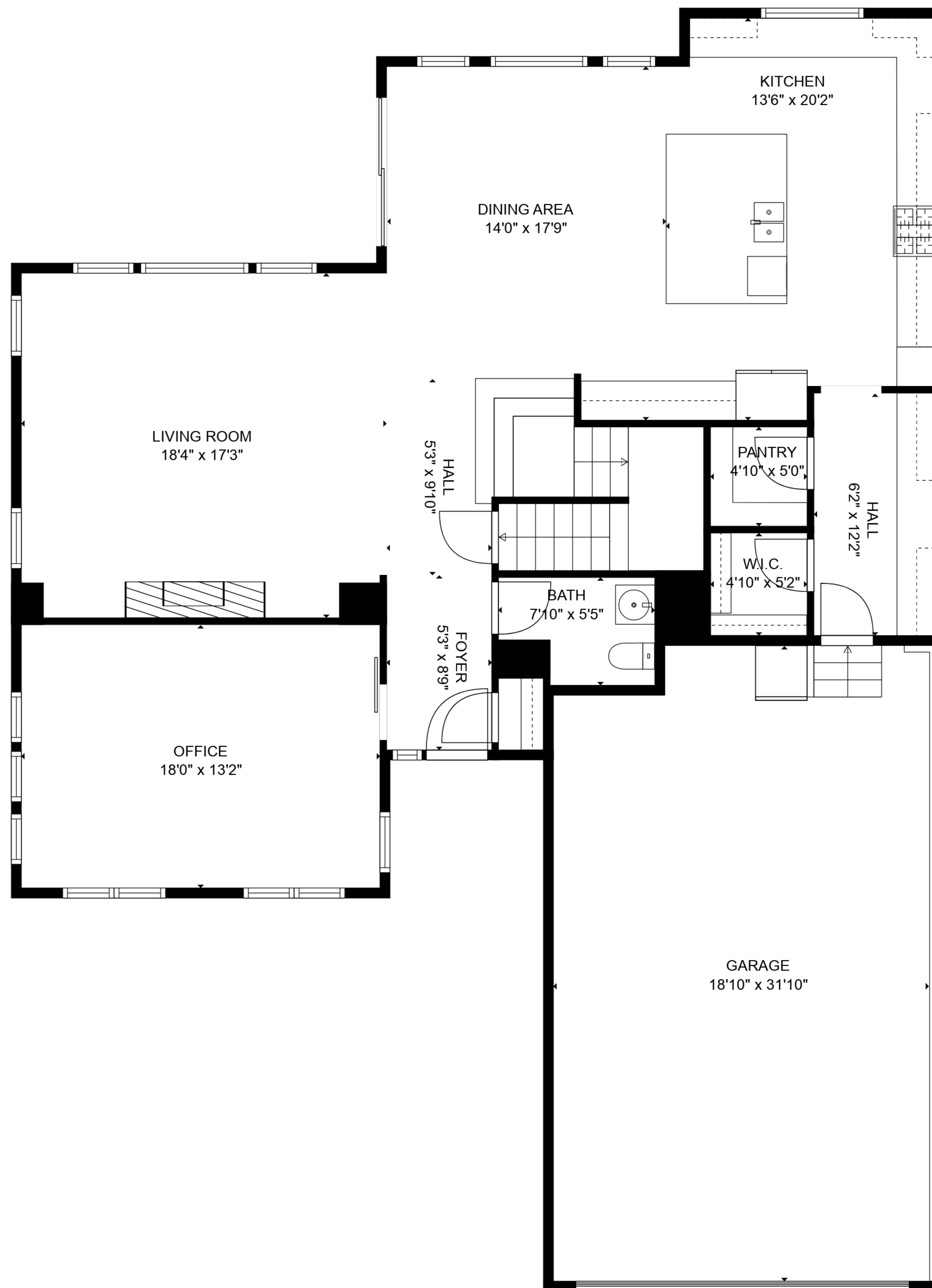




BASEMENT
45'10" x 34'3"

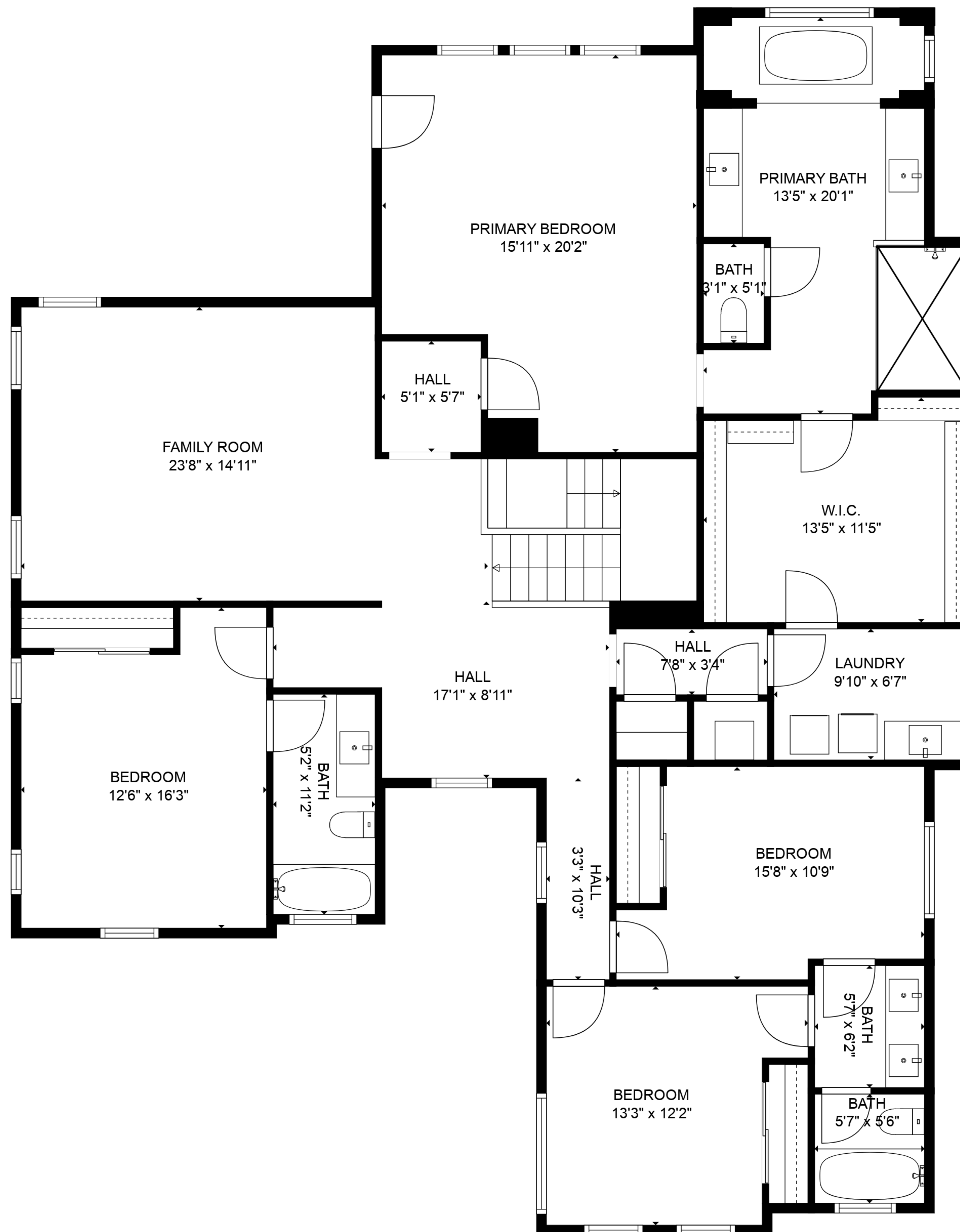
TOTAL: 3529 sq. ft
BELOW GROUND: 0 sq. ft, FLOOR 2: 1439 sq. ft, FLOOR 3: 2090 sq. ft
EXCLUDED AREAS: BASEMENT: 1409 sq. ft, GARAGE: 598 sq. ft

SIZES AND DIMENSIONS ARE APPROXIMATE, ACTUAL MAY VARY.



TOTAL: 3529 sq. ft
 BELOW GROUND: 0 sq. ft, FLOOR 2: 1439 sq. ft, FLOOR 3: 2090 sq. ft
 EXCLUDED AREAS: BASEMENT: 1409 sq. ft, GARAGE: 598 sq. ft

SIZES AND DIMENSIONS ARE APPROXIMATE, ACTUAL MAY VARY.



TOTAL: 3529 sq. ft

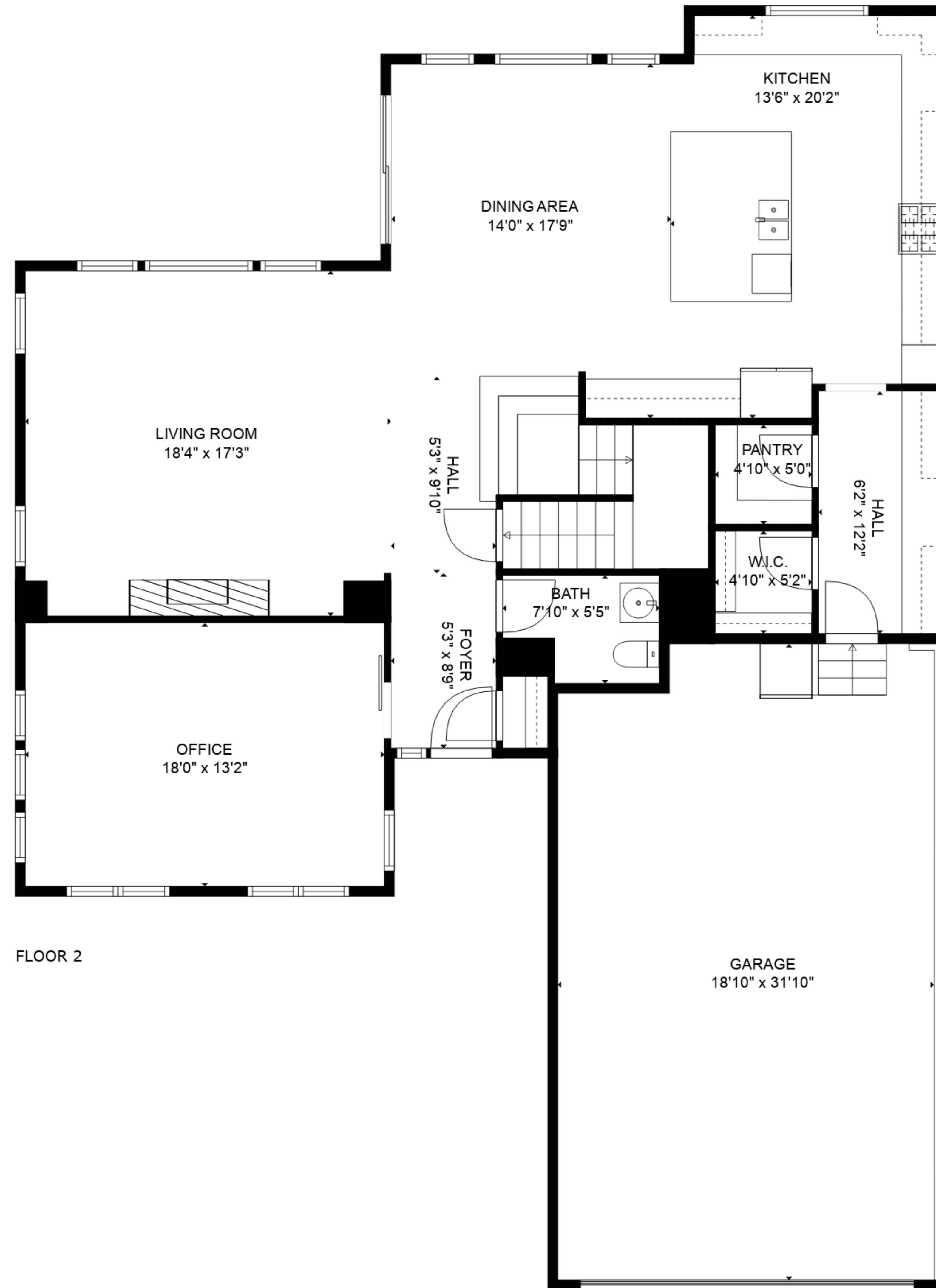
BELOW GROUND: 0 sq. ft, FLOOR 2: 1439 sq. ft, FLOOR 3: 2090 sq. ft
 EXCLUDED AREAS: BASEMENT: 1409 sq. ft, GARAGE: 598 sq. ft

SIZES AND DIMENSIONS ARE APPROXIMATE, ACTUAL MAY VARY.



BASEMENT
45'10" x 34'3"

FLOOR 1



LIVING ROOM
18'4" x 17'3"

DINING AREA
14'0" x 17'9"

KITCHEN
13'6" x 20'2"

OFFICE
18'0" x 13'2"

FOYER
5'3" x 8'9"

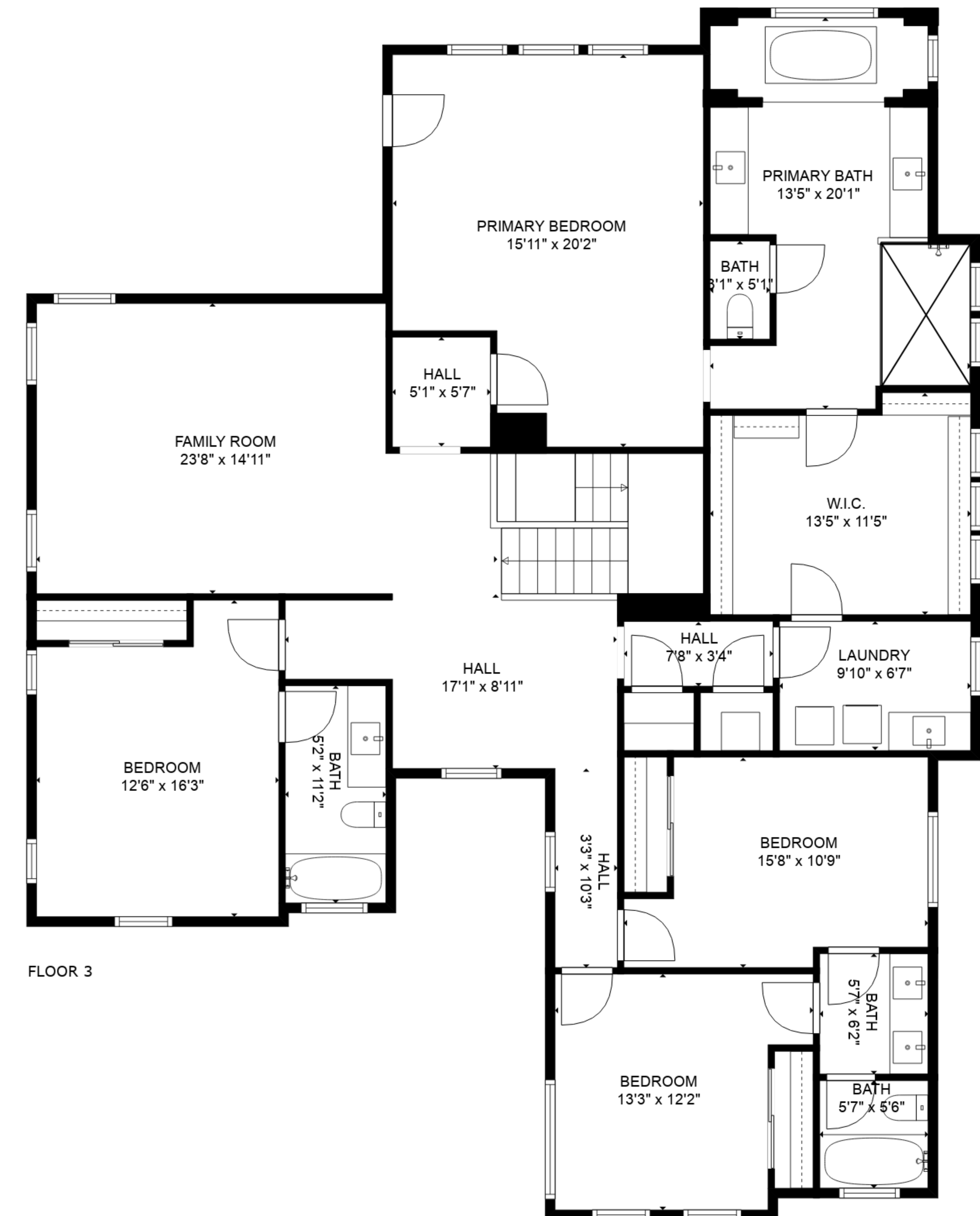
BATH
7'10" x 5'5"

PANTRY
4'10" x 5'0"

W.I.C.
4'10" x 5'2"

GARAGE
18'10" x 31'10"

FLOOR 2



FAMILY ROOM
23'8" x 14'11"

BEDROOM
12'6" x 16'3"

PRIMARY BEDROOM
15'11" x 20'2"

PRIMARY BATH
13'5" x 20'1"

BATH
8'1" x 5'1"

W.I.C.
13'5" x 11'5"

HALL
17'1" x 8'11"

HALL
7'8" x 3'4"

LAUNDRY
9'10" x 6'7"

BEDROOM
15'8" x 10'9"

BEDROOM
13'3" x 12'2"

BATH
5'7" x 6'2"

BATH
5'7" x 5'6"

FLOOR 3

TOTAL: 3529 sq. ft
 BELOW GROUND: 0 sq. ft, FLOOR 2: 1439 sq. ft, FLOOR 3: 2090 sq. ft
 EXCLUDED AREAS: BASEMENT: 1409 sq. ft, GARAGE: 598 sq. ft

SIZES AND DIMENSIONS ARE APPROXIMATE, ACTUAL MAY VARY.