


Home report


118 Oakwood Place, Peakland, Lynchburg, Lynchburg city,
Virginia, United States, 24503




Property summary




0
Garages



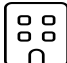
4
Bedrooms




3
Bathrooms




2
Half baths



4
Floors



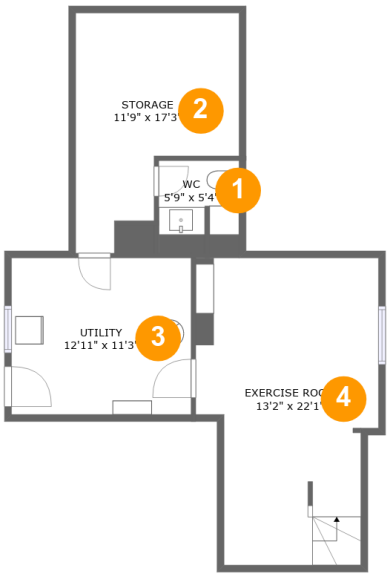
4,397
Gross living
area sqft



7,087
Total sqft

Home report

118 Oakwood Place, Peakland, Lynchburg, Lynchburg city,
Virginia, United States, 24503



Room dimensions

Floor 1 Total sqft: 678 Living area: 8

#		Max Dimensions	sqft	Included
1	WC	5'9" x 5'4"	37 sq. ft	No
2	Storage	11'9" x 17'3"	153 sq. ft	No
3	Utility	12'11" x 11'3"	145 sq. ft	No
4	Exercise Room	13'2" x 22'1"	255 sq. ft	No

Home report

118 Oakwood Place, Peakland, Lynchburg, Lynchburg city,
Virginia, United States, 24503



Room dimensions

Floor 2 Total sqft: 3789 Living area: 2243

#		Max Dimensions	sqft	Included
5	Dining Room	15'8" x 15'10"	247 sq. ft	Yes
6	Family Room	20'6" x 27'7"	546 sq. ft	Yes
7	WC	5'5" x 7'2"	31 sq. ft	Yes
8	Foyer	9'10" x 19'6"	207 sq. ft	Yes
9	Hall	4'10" x 3'6"	17 sq. ft	Yes
10	Covered Patio	13'3" x 29'10"	343 sq. ft	No
11	Patio	24'6" x 53'7"	1186 sq. ft	No
12	Laundry	8'8" x 12'6"	95 sq. ft	Yes
13	Living Room	15'9" x 23'4"	376 sq. ft	Yes
14	Kitchen	12'0" x 19'9"	229 sq. ft	Yes
15	Entry	6'3" x 17'3"	107 sq. ft	Yes

Home report

118 Oakwood Place, Peakland, Lynchburg, Lynchburg city,
Virginia, United States, 24503

#		Max Dimensions	sqft	Included
16	Breakfast Nook	15'10" x 12'3"	193 sq. ft	Yes

Home report

118 Oakwood Place, Peakland, Lynchburg, Lynchburg city,
Virginia, United States, 24503



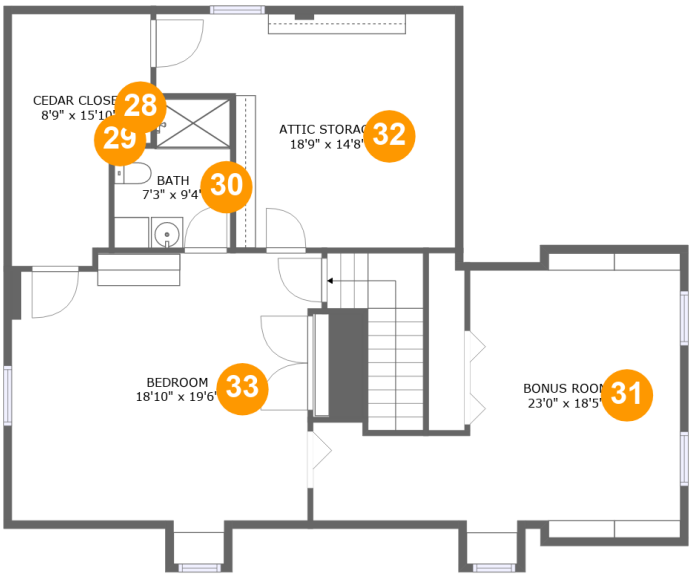
Room dimensions

Floor 3 Total sqft: 1399 Living area: 1386

#		Max Dimensions	sqft	Included
17	Bath	10'1" x 8'8"	68 sq. ft	Yes
18	Office	14'2" x 12'1"	170 sq. ft	Yes
19	Open To Below	1'5" x 4'8"	13 sq. ft	No
20	Bedroom	15'5" x 14'4"	221 sq. ft	Yes
21	Primary Bedroom	15'9" x 14'4"	226 sq. ft	Yes
22	Hall	6'2" x 6'3"	38 sq. ft	Yes
23	Room	6'0" x 4'3"	25 sq. ft	Yes
24	Bath	9'0" x 5'10"	52 sq. ft	Yes
25	Hall	10'0" x 18'9"	138 sq. ft	Yes
26	Bath	5'4" x 8'8"	46 sq. ft	Yes
27	Bedroom	13'4" x 12'1"	161 sq. ft	Yes

Home report

118 Oakwood Place, Peakland, Lynchburg, Lynchburg city,
Virginia, United States, 24503

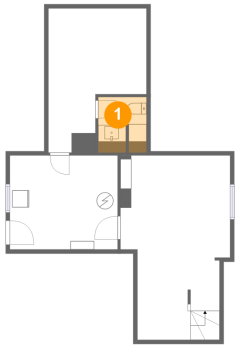


Room dimensions

Floor 4 Total sqft: 1221 Living area: 760

#		Max Dimensions	sqft	Included
28	Cedar Closet	8'9" x 15'10"	18 sq. ft	No
29	Cedar Closet	6'5" x 15'10"	98 sq. ft	No
30	Bath	7'3" x 9'4"	60 sq. ft	Yes
31	Bonus Room	23'0" x 18'5"	154 sq. ft	Yes
32	Attic Storage	18'9" x 14'8"	133 sq. ft	Yes
33	Bedroom	18'10" x 19'6"	256 sq. ft	Yes

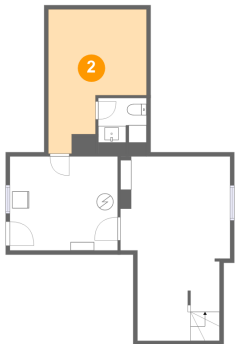
1 Floor 1 - WC



Max Dimensions: 5'9" x 5'4"
Calculated Area: 37 sq. ft
Included: No

Heated: Yes
Finished: Yes
Enclosed: Yes
Contiguous: No
Permitted: Yes
Wet space: No
Addition: No
Conversion: No

2 Floor 1 - Storage

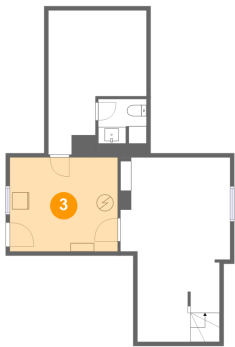


Max Dimensions: 11'9" x 17'3"
Calculated Area: 153 sq. ft
Included: No

Heated: No
Finished: No
Enclosed: No
Contiguous: Yes
Permitted: Yes
Wet space: No
Addition: No
Conversion: No

118 Oakwood Place, Peakland, Lynchburg, Lynchburg city,
Virginia, United States, 24503

3 Floor 1 - Utility



Max Dimensions: 12'11" x 11'3"
Calculated Area: 145 sq. ft
Included: No

Heated: Yes
Finished: No
Enclosed: Yes
Contiguous: Yes
Permitted: Yes
Wet space: No
Addition: No
Conversion: No

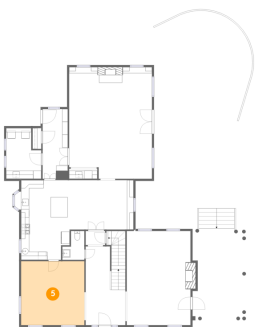
4 Floor 1 - Exercise Room



Max Dimensions: 13'2" x 22'1"
Calculated Area: 255 sq. ft
Included: No

Heated: Yes
Finished: Yes
Enclosed: Yes
Contiguous: No
Permitted: Yes
Wet space: No
Addition: No
Conversion: No

5 Floor 2 - Dining Room

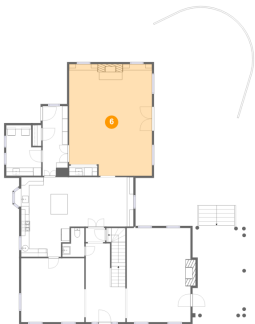


Max Dimensions: 15'8" x 15'10"
Calculated Area: 247 sq. ft
Included: Yes

Heated: Yes
Finished: Yes
Enclosed: Yes
Contiguous: Yes
Permitted: Yes
Wet space: No
Addition: No
Conversion: No

118 Oakwood Place, Peakland, Lynchburg, Lynchburg city,
Virginia, United States, 24503

6 Floor 2 - Family Room



Max Dimensions: 20'6" x 27'7"
Calculated Area: 546 sq. ft
Included: Yes

Heated: Yes
Finished: Yes
Enclosed: Yes
Contiguous: Yes
Permitted: Yes
Wet space: No
Addition: No
Conversion: No

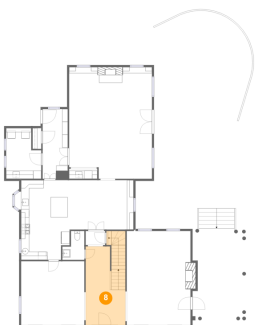
7 Floor 2 - WC



Max Dimensions: 5'5" x 7'2"
Calculated Area: 31 sq. ft
Included: Yes

Heated: Yes
Finished: Yes
Enclosed: Yes
Contiguous: Yes
Permitted: Yes
Wet space: Yes
Addition: No
Conversion: No

8 Floor 2 - Foyer



Max Dimensions: 9'10" x 19'6"
Calculated Area: 207 sq. ft
Included: Yes

Heated: Yes
Finished: Yes
Enclosed: Yes
Contiguous: Yes
Permitted: Yes
Wet space: No
Addition: No
Conversion: No

9 Floor 2 - Hall



Max Dimensions: 4'10" x 3'6"
Calculated Area: 17 sq. ft
Included: Yes

Heated: Yes
Finished: Yes
Enclosed: Yes
Contiguous: Yes
Permitted: Yes
Wet space: No
Addition: No
Conversion: No

10 Floor 2 - Covered Patio



Max Dimensions: 13'3" x 29'10"
Calculated Area: 343 sq. ft
Included: No

Heated: No
Finished: Yes
Enclosed: No
Contiguous: Yes
Permitted: Yes
Wet space: No
Addition: No
Conversion: No

11 Floor 2 - Patio

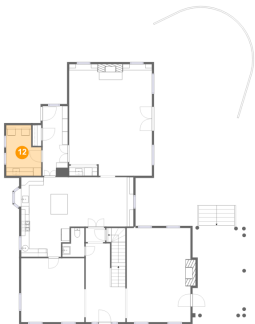


Max Dimensions: 24'6" x 53'7"
Calculated Area: 1186 sq. ft
Included: No

Heated: No
Finished: Yes
Enclosed: No
Contiguous: Yes
Permitted: Yes
Wet space: No
Addition: No
Conversion: No

118 Oakwood Place, Peakland, Lynchburg, Lynchburg city,
Virginia, United States, 24503

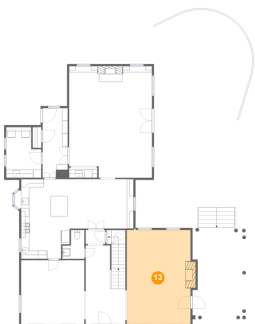
12 Floor 2 - Laundry



Max Dimensions: 8'8" x 12'6"
Calculated Area: 95 sq. ft
Included: Yes

Heated: Yes
Finished: Yes
Enclosed: Yes
Contiguous: Yes
Permitted: Yes
Wet space: No
Addition: No
Conversion: No

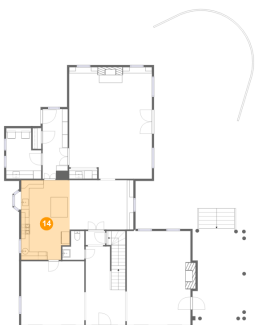
13 Floor 2 - Living Room



Max Dimensions: 15'9" x 23'4"
Calculated Area: 376 sq. ft
Included: Yes

Heated: Yes
Finished: Yes
Enclosed: Yes
Contiguous: Yes
Permitted: Yes
Wet space: No
Addition: No
Conversion: No

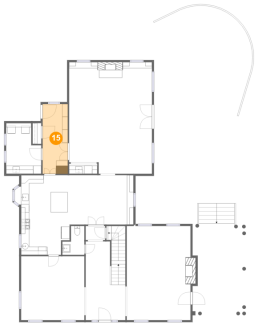
14 Floor 2 - Kitchen



Max Dimensions: 12'0" x 19'9"
Calculated Area: 229 sq. ft
Included: Yes

Heated: Yes
Finished: Yes
Enclosed: Yes
Contiguous: Yes
Permitted: Yes
Wet space: No
Addition: No
Conversion: No

15 Floor 2 - Entry



Max Dimensions: 6'3" x 17'3"
Calculated Area: 107 sq. ft
Included: Yes

Heated: Yes
Finished: Yes
Enclosed: Yes
Contiguous: Yes
Permitted: Yes
Wet space: No
Addition: No
Conversion: No

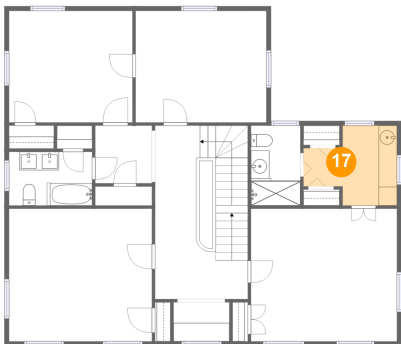
16 Floor 2 - Breakfast Nook



Max Dimensions: 15'10" x 12'3"
Calculated Area: 193 sq. ft
Included: Yes

Heated: Yes
Finished: Yes
Enclosed: Yes
Contiguous: Yes
Permitted: Yes
Wet space: No
Addition: No
Conversion: No

17 Floor 3 - Bath

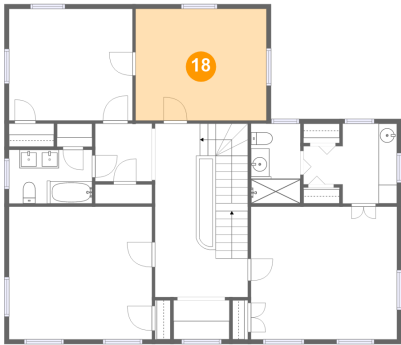


Max Dimensions: 10'1" x 8'8"
Calculated Area: 68 sq. ft
Included: Yes

Heated: Yes
Finished: Yes
Enclosed: Yes
Contiguous: Yes
Permitted: Yes
Wet space: Yes
Addition: No
Conversion: No

118 Oakwood Place, Peakland, Lynchburg, Lynchburg city,
Virginia, United States, 24503

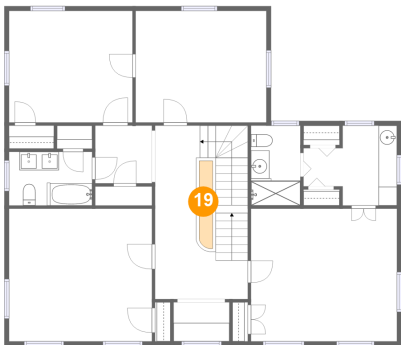
18 Floor 3 - Office



Max Dimensions: 14'2" x 12'1"
Calculated Area: 170 sq. ft
Included: Yes

Heated: Yes
Finished: Yes
Enclosed: Yes
Contiguous: Yes
Permitted: Yes
Wet space: No
Addition: No
Conversion: No

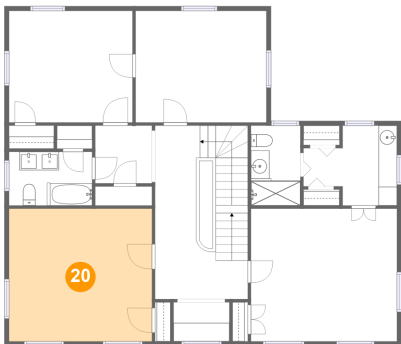
19 Floor 3 - Open To Below



Max Dimensions: 1'5" x 4'8"
Calculated Area: 13 sq. ft
Included: No

Heated: No
Finished: No
Enclosed: No
Contiguous: Yes
Permitted: No
Wet space: No
Addition: No
Conversion: No

20 Floor 3 - Bedroom

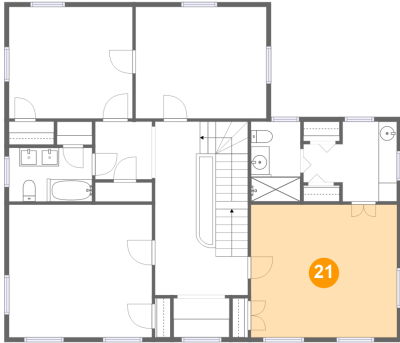


Max Dimensions: 15'5" x 14'4"
Calculated Area: 221 sq. ft
Included: Yes

Heated: Yes
Finished: Yes
Enclosed: Yes
Contiguous: Yes
Permitted: Yes
Wet space: No
Addition: No
Conversion: No

118 Oakwood Place, Peakland, Lynchburg, Lynchburg city,
Virginia, United States, 24503

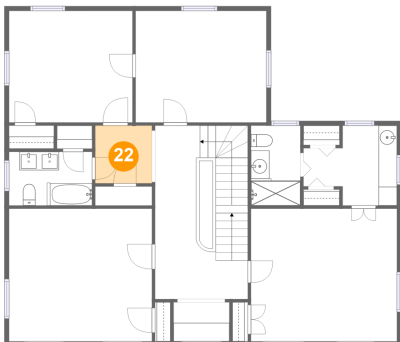
21 Floor 3 - Primary Bedroom



Max Dimensions: 15'9" x 14'4"
Calculated Area: 226 sq. ft
Included: Yes

Heated: Yes
Finished: Yes
Enclosed: Yes
Contiguous: Yes
Permitted: Yes
Wet space: No
Addition: No
Conversion: No

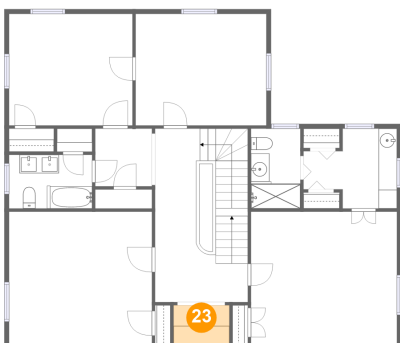
22 Floor 3 - Hall



Max Dimensions: 6'2" x 6'3"
Calculated Area: 38 sq. ft
Included: Yes

Heated: Yes
Finished: Yes
Enclosed: Yes
Contiguous: Yes
Permitted: Yes
Wet space: No
Addition: No
Conversion: No

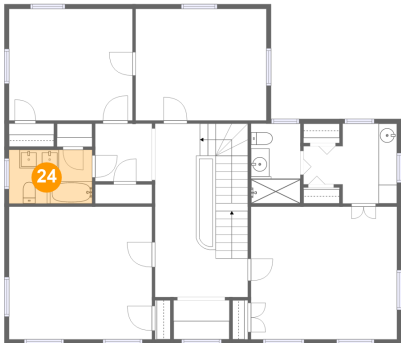
23 Floor 3 - Room



Max Dimensions: 6'0" x 4'3"
Calculated Area: 25 sq. ft
Included: Yes

Heated: Yes
Finished: Yes
Enclosed: Yes
Contiguous: Yes
Permitted: Yes
Wet space: No
Addition: No
Conversion: No

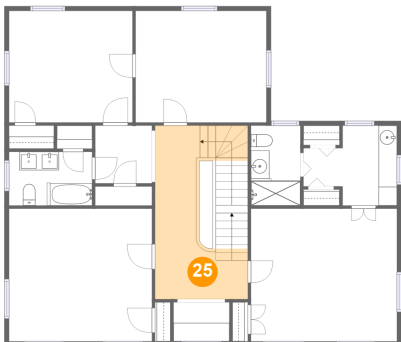
24 Floor 3 - Bath



Max Dimensions: 9'0" x 5'10"
Calculated Area: 52 sq. ft
Included: Yes

Heated: Yes
Finished: Yes
Enclosed: Yes
Contiguous: Yes
Permitted: Yes
Wet space: Yes
Addition: No
Conversion: No

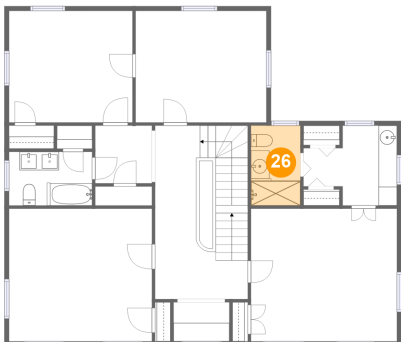
25 Floor 3 - Hall



Max Dimensions: 10'0" x 18'9"
Calculated Area: 138 sq. ft
Included: Yes

Heated: Yes
Finished: Yes
Enclosed: Yes
Contiguous: Yes
Permitted: Yes
Wet space: No
Addition: No
Conversion: No

26 Floor 3 - Bath

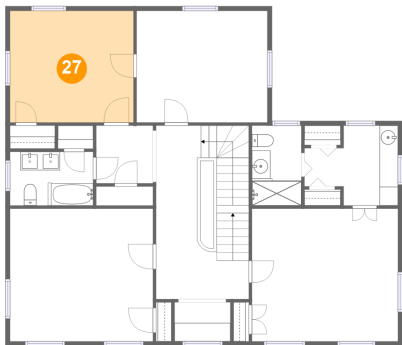


Max Dimensions: 5'4" x 8'8"
Calculated Area: 46 sq. ft
Included: Yes

Heated: Yes
Finished: Yes
Enclosed: Yes
Contiguous: Yes
Permitted: Yes
Wet space: Yes
Addition: No
Conversion: No

118 Oakwood Place, Peakland, Lynchburg, Lynchburg city,
Virginia, United States, 24503

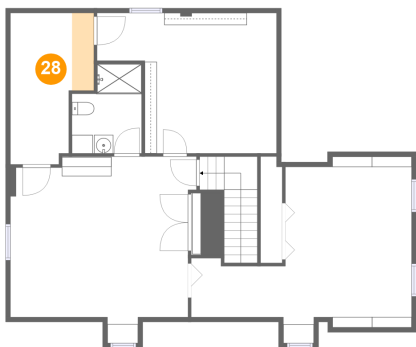
27 Floor 3 - Bedroom



Max Dimensions: 13'4" x 12'1"
Calculated Area: 161 sq. ft
Included: Yes

Heated: Yes
Finished: Yes
Enclosed: Yes
Contiguous: Yes
Permitted: Yes
Wet space: No
Addition: No
Conversion: No

28 Floor 4 - Cedar Closet



Max Dimensions: 8'9" x 15'10"
Calculated Area: 18 sq. ft
Included: No

Heated: No
Finished: No
Enclosed: Yes
Contiguous: Yes
Permitted: Yes
Wet space: No
Addition: No
Conversion: No

29 Floor 4 - Cedar Closet



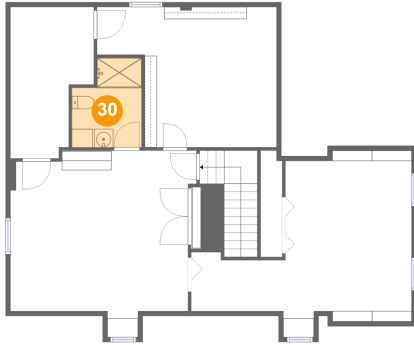
Max Dimensions: 6'5" x 15'10"
Calculated Area: 98 sq. ft
Included: No

Heated: Yes
Finished: No
Enclosed: Yes
Contiguous: Yes
Permitted: Yes
Wet space: No
Addition: No
Conversion: No

Home report

118 Oakwood Place, Peakland, Lynchburg, Lynchburg city,
Virginia, United States, 24503

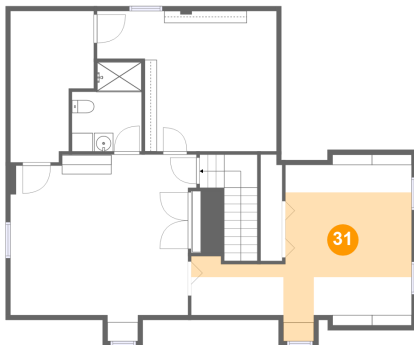
30 Floor 4 - Bath



Max Dimensions: 7'3" x 9'4"
Calculated Area: 60 sq. ft
Included: Yes

Heated: Yes
Finished: Yes
Enclosed: Yes
Contiguous: Yes
Permitted: Yes
Wet space: Yes
Addition: No
Conversion: No

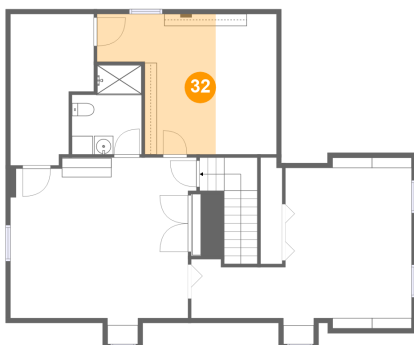
31 Floor 4 - Bonus Room



Max Dimensions: 23'0" x 18'5"
Calculated Area: 154 sq. ft
Included: Yes

Heated: Yes
Finished: Yes
Enclosed: Yes
Contiguous: Yes
Permitted: Yes
Wet space: No
Addition: No
Conversion: No

32 Floor 4 - Attic Storage

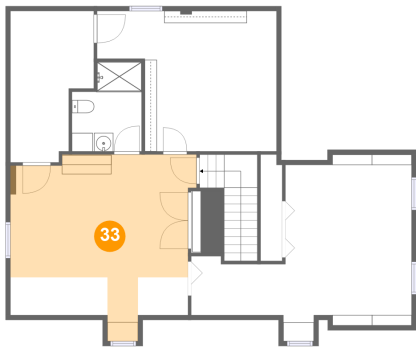


Max Dimensions: 18'9" x 14'8"
Calculated Area: 133 sq. ft
Included: Yes

Heated: Yes
Finished: Yes
Enclosed: Yes
Contiguous: Yes
Permitted: Yes
Wet space: No
Addition: No
Conversion: No

118 Oakwood Place, Peakland, Lynchburg, Lynchburg city,
Virginia, United States, 24503

33 Floor 4 - Bedroom



Max Dimensions: 18'10" x 19'6"
Calculated Area: 256 sq. ft
Included: Yes

Heated: Yes
Finished: Yes
Enclosed: Yes
Contiguous: Yes
Permitted: Yes
Wet space: No
Addition: No
Conversion: No