

39 Holly Drive

Port Moody BC V3H 5M4

Lower Level Area: 715 SQ.FT.
Main Level Area: 1,068 SQ.FT.
Upper Level Area: 845 SQ.FT.
Total Area: 2,628 SQ.FT.

3



BEDROOMS

3

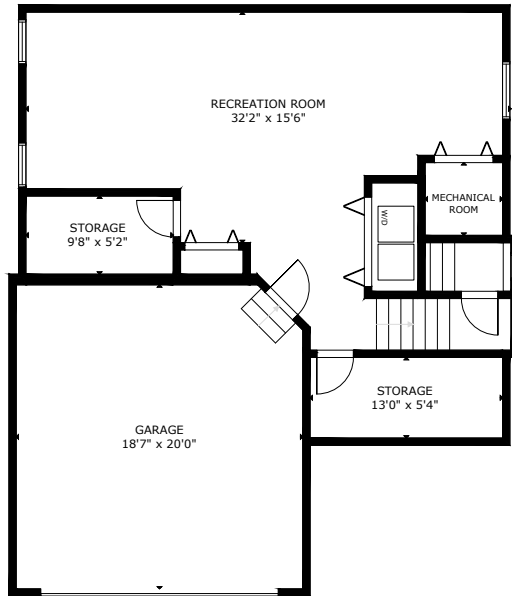


BATHROOMS

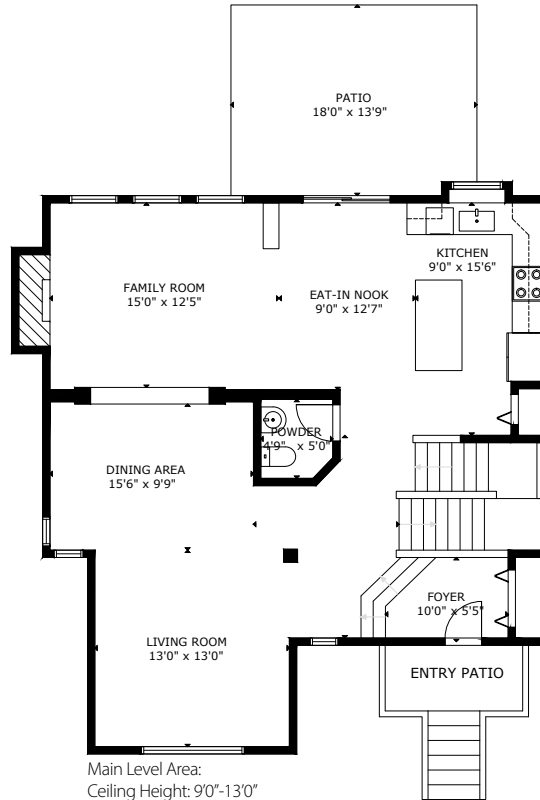
2,628



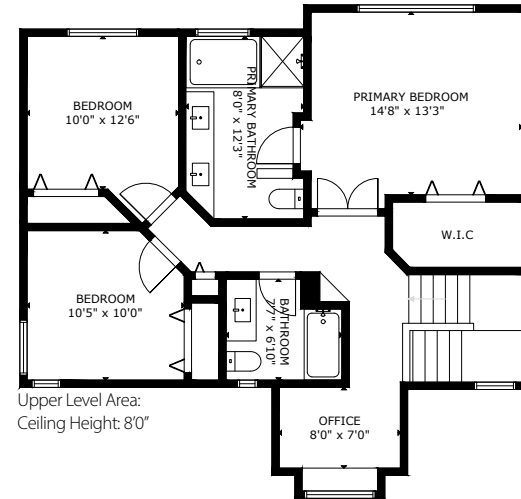
TOTAL SQ.FT.



Lower Level Area:
Ceiling Height 8'0"



Main Level Area:
Ceiling Height: 9'0"-13'0"



Upper Level Area:
Ceiling Height: 8'0"

39 HOLLY DR PORT MOODY BC V3H 5M4

Measurements are approximate and may not be to scale.
The floor plan illustration is not suitable for construction/architectural purposes.



3D IMMERSIVE
Tours Photos Floor Plans

Professionally measured by 3D Immersive Marketing Ltd.

Lead Floor Planner: *Sara Alexander*
Quality Assurance: *Juanita Graham*