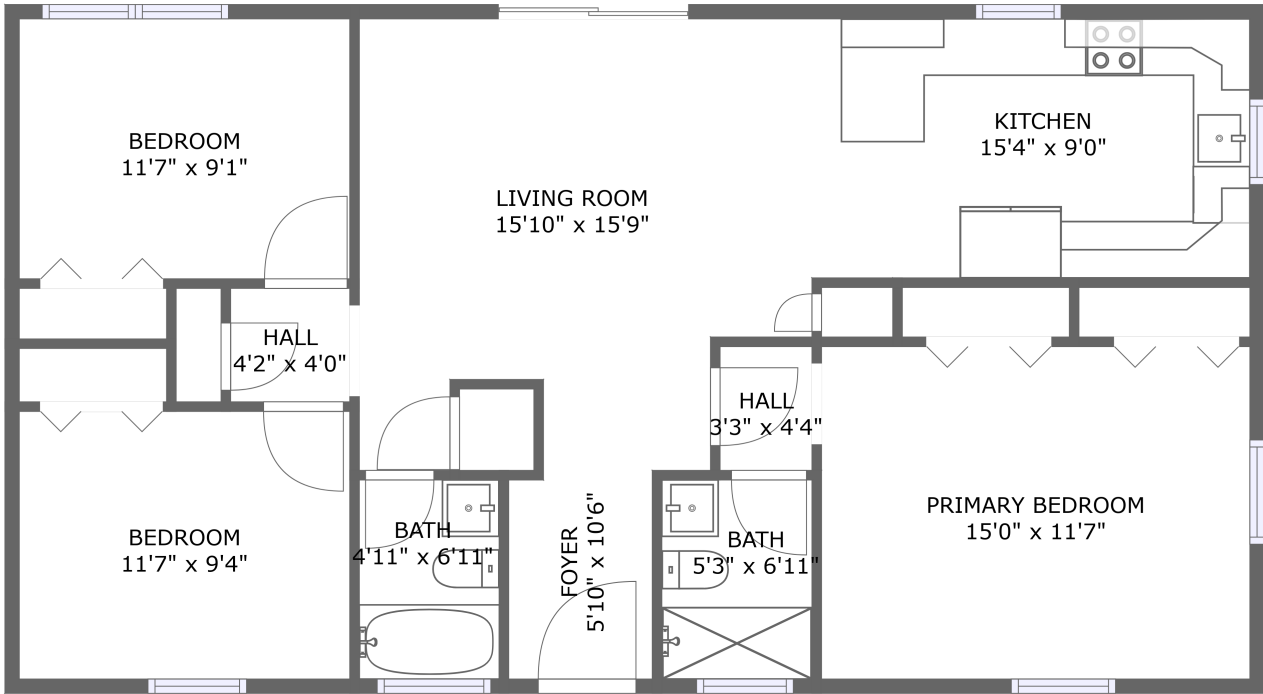


4032 Dinglewood Ave, Charlotte, North Carolina, United States



FLOOR 1

Property Summary



1 floors



3 bedrooms



2 bathrooms



1,058 total sqft

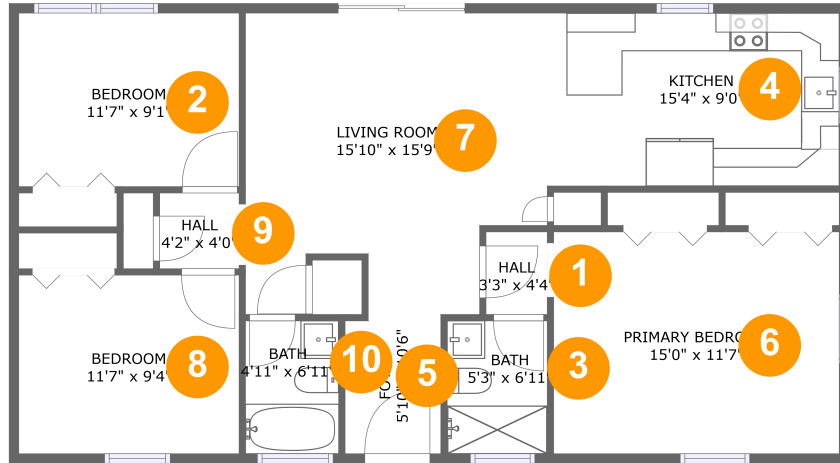


0 garages



1,058 Gross Living Area sqft

4032 Dinglewood Ave, Charlotte, North Carolina, United States



Room Dimensions

Floor 1

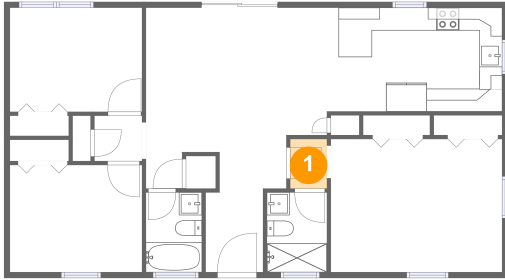
Total sqft: 1058

Living area: 1058

#	Room name	Dimensions	Area (sqft)	Counted as Living Area
1	Hall	3'3" x 4'4"	14 sq. ft	Yes
2	Bedroom	11'7" x 9'1"	105 sq. ft	Yes
3	Bath	5'3" x 6'11"	36 sq. ft	Yes
4	Kitchen	15'4" x 9'0"	138 sq. ft	Yes
5	Foyer	5'10" x 10'6"	55 sq. ft	Yes
6	Primary Bedroom	15'0" x 11'7"	174 sq. ft	Yes
7	Living Room	15'10" x 15'9"	205 sq. ft	Yes
8	Bedroom	11'7" x 9'4"	108 sq. ft	Yes
9	Hall	4'2" x 4'0"	16 sq. ft	Yes
10	Bath	4'11" x 6'11"	34 sq. ft	Yes

4032 Dinglewood Ave, Charlotte, North Carolina, United States

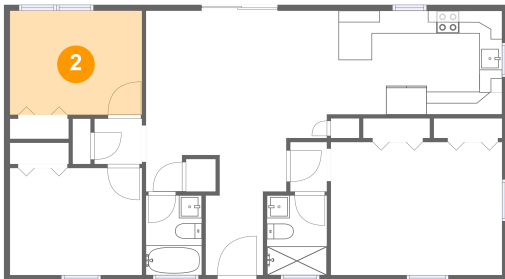
1 Floor 1 - Hall



Dimensions: 3'3" x 4'4"
Area: 14 sq. ft
Counted as Living Area:
Yes

Heated: Yes
Finished: Yes
Enclosed: Yes
Contiguous:
Yes
Permitted: Yes
Wet Space: No
Addition: No
Conversion: No

2 Floor 1 - Bedroom

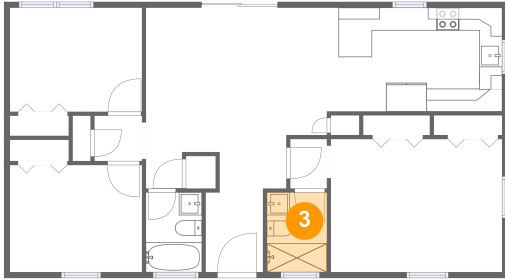


Dimensions: 11'7" x 9'1"
Area: 105 sq. ft
Counted as Living Area:
Yes

Heated: Yes
Finished: Yes
Enclosed: Yes
Contiguous:
Yes
Permitted: Yes
Wet Space: No
Addition: No
Conversion: No

4032 Dinglewood Ave, Charlotte, North Carolina, United States

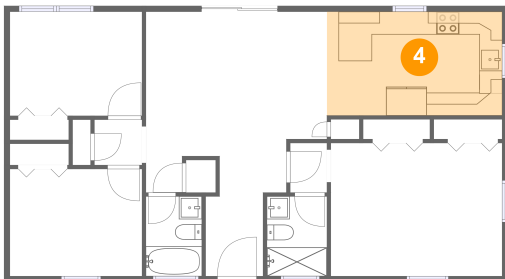
3 Floor 1 - Bath



Dimensions: 5'3" x 6'11"
Area: 36 sq. ft
Counted as Living Area:
Yes

Heated: Yes
Finished: Yes
Enclosed: Yes
Contiguous:
Yes
Permitted: Yes
Wet Space: Yes
Addition: No
Conversion: No

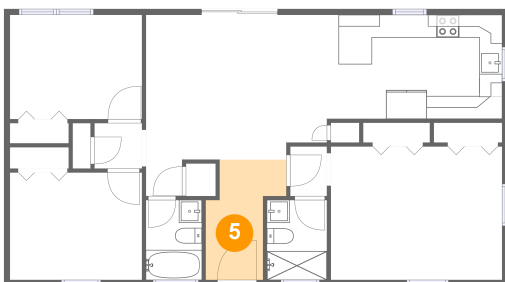
4 Floor 1 - Kitchen



Dimensions: 15'4" x 9'0"
Area: 138 sq. ft
Counted as Living Area:
Yes

Heated: Yes
Finished: Yes
Enclosed: Yes
Contiguous:
Yes
Permitted: Yes
Wet Space: No
Addition: No
Conversion: No

5 Floor 1 - Foyer

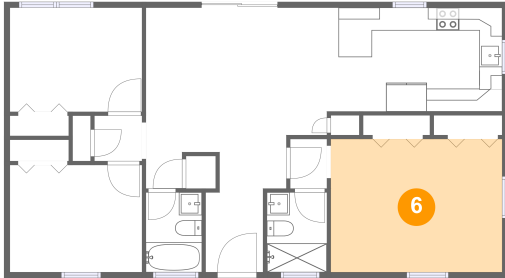


Dimensions: 5'10" x 10'6"
Area: 55 sq. ft
Counted as Living Area:
Yes

Heated: Yes
Finished: Yes
Enclosed: Yes
Contiguous:
Yes
Permitted: Yes
Wet Space: No
Addition: No
Conversion: No

4032 Dinglewood Ave, Charlotte, North Carolina, United States

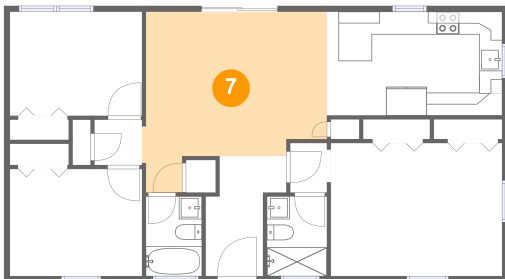
6 Floor 1 - Primary Bedroom



Dimensions: 15'0" x 11'7"
Area: 174 sq. ft
Counted as Living Area:
Yes

Heated: Yes
Finished: Yes
Enclosed: Yes
Contiguous:
Yes
Permitted: Yes
Wet Space: No
Addition: No
Conversion: No

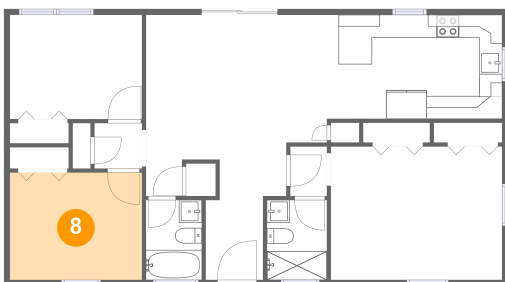
7 Floor 1 - Living Room



Dimensions: 15'10" x 15'9"
Area: 205 sq. ft
Counted as Living Area:
Yes

Heated: Yes
Finished: Yes
Enclosed: Yes
Contiguous:
Yes
Permitted: Yes
Wet Space: No
Addition: No
Conversion: No

8 Floor 1 - Bedroom



Dimensions: 11'7" x 9'4"
Area: 108 sq. ft
Counted as Living Area:
Yes

Heated: Yes
Finished: Yes
Enclosed: Yes
Contiguous:
Yes
Permitted: Yes
Wet Space: No
Addition: No
Conversion: No

4032 Dinglewood Ave, Charlotte, North Carolina, United States

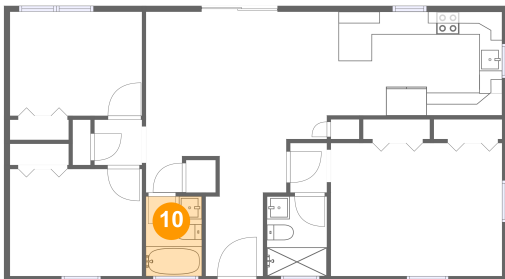
9 Floor 1 - Hall



Dimensions: 4'2" x 4'0"
Area: 16 sq. ft
Counted as Living Area:
Yes

Heated: Yes
Finished: Yes
Enclosed: Yes
Contiguous:
Yes
Permitted: Yes
Wet Space: No
Addition: No
Conversion: No

10 Floor 1 - Bath



Dimensions: 4'11" x 6'11"
Area: 34 sq. ft
Counted as Living Area:
Yes

Heated: Yes
Finished: Yes
Enclosed: Yes
Contiguous:
Yes
Permitted: Yes
Wet Space: Yes
Addition: No
Conversion: No