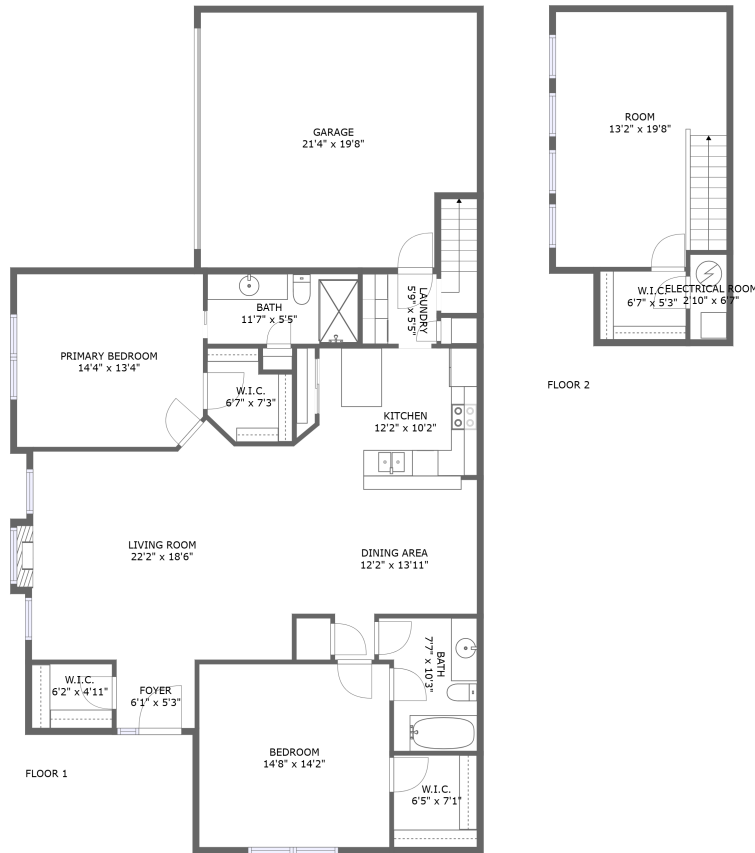



# 174 Canterbury Court, Bloomingdale, DuPage County, Illinois, United States, 60108



## Property summary


 **1** Garages

 **2** Bedrooms

 **2** Bathrooms

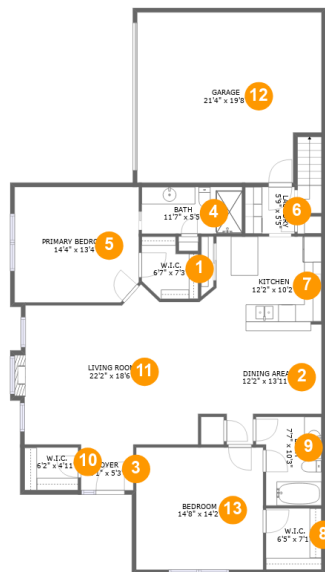
 **0** Half baths

 **2** Floors

 **1,768** Gross living area sqft

 **2,285** Total sqft

# 174 Canterbury Court, Bloomingdale, DuPage County, Illinois, United States, 60108



## Room dimensions

Floor 1

Total sqft: 1937 Living area: 1499

#		Dimensions	sqft	Counted as living area
1	Cl	6'7" x 7'3"	40 sq. ft	Yes
2	Dining Room	12'2" x 13'11"	137 sq. ft	Yes
3	Entry	6'1" x 5'3"	32 sq. ft	Yes
4	Bath	11'7" x 5'5"	63 sq. ft	Yes
5	Bedroom	14'4" x 13'4"	189 sq. ft	Yes
6	Utility	5'9" x 5'5"	31 sq. ft	Yes
7	Kitchen	12'2" x 10'2"	123 sq. ft	Yes
8	Cl	6'5" x 7'1"	45 sq. ft	Yes
9	Bath	7'7" x 10'3"	69 sq. ft	Yes
10	Cl	6'2" x 4'11"	31 sq. ft	Yes
11	Living Room	22'2" x 18'6"	364 sq. ft	Yes

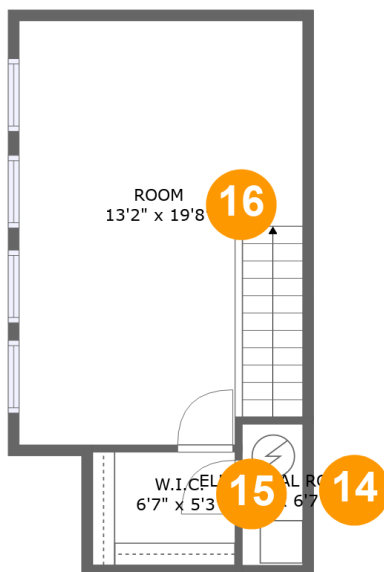
Scan captured on Tue, 17 Dec 2024 13:37:34 GMT

Information is calculated by Cubicasa technology deemed highly reliable but not guaranteed.

# 174 Canterbury Court, Bloomingdale, DuPage County, Illinois, United States, 60108

#		Dimensions	sqft	Counted as living area
12	Garage	21'4" x 19'8"	401 sq. ft	No
13	Bedroom	14'8" x 14'2"	207 sq. ft	Yes

# 174 Canterbury Court, Bloomingdale, DuPage County, Illinois, United States, 60108



## Room dimensions

Floor 2

Total sqft: 348 Living area: 269

#		Dimensions	sqft	Counted as living area
14	Room	2'10" x 6'7"	18 sq. ft	No
15	Cl	6'7" x 5'3"	35 sq. ft	Yes
16	Room	13'2" x 19'8"	211 sq. ft	Yes

# 174 Canterbury Court, Bloomingdale, DuPage County, Illinois, United States, 60108

## 1 Floor 1 - Cl



Dimensions: 6'7" x 7'3"  
Area: 40 sq. ft  
Counted as living area: Yes

Heated: Yes  
Finished: Yes  
Enclosed: Yes  
Contiguous: Yes  
Permitted: Yes  
Wet space: No  
Addition: No  
Conversion: No

## 2 Floor 1 - Dining Room



Dimensions: 12'2" x 13'11"  
Area: 137 sq. ft  
Counted as living area: Yes

Heated: Yes  
Finished: Yes  
Enclosed: Yes  
Contiguous: Yes  
Permitted: Yes  
Wet space: No  
Addition: No  
Conversion: No

# 174 Canterbury Court, Bloomingdale, DuPage County, Illinois, United States, 60108

## 3 Floor 1 - Entry



Dimensions: 6'1" x 5'3"  
Area: 32 sq. ft  
Counted as living area: Yes

Heated: Yes  
Finished: Yes  
Enclosed: Yes  
Contiguous: Yes  
Permitted: Yes  
Wet space: No  
Addition: No  
Conversion: No

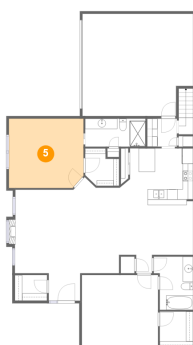
## 4 Floor 1 - Bath



Dimensions: 11'7" x 5'5"  
Area: 63 sq. ft  
Counted as living area: Yes

Heated: Yes  
Finished: Yes  
Enclosed: Yes  
Contiguous: Yes  
Permitted: Yes  
Wet space: Yes  
Addition: No  
Conversion: No

## 5 Floor 1 - Bedroom



Dimensions: 14'4" x 13'4"  
Area: 189 sq. ft  
Counted as living area: Yes

Heated: Yes  
Finished: Yes  
Enclosed: Yes  
Contiguous: Yes  
Permitted: Yes  
Wet space: No  
Addition: No  
Conversion: No

# 174 Canterbury Court, Bloomingdale, DuPage County, Illinois, United States, 60108

## 6 Floor 1 - Utility



Dimensions: 5'9" x 5'5"  
Area: 31 sq. ft  
Counted as living area: Yes

Heated: Yes  
Finished: Yes  
Enclosed: Yes  
Contiguous: Yes  
Permitted: Yes  
Wet space: No  
Addition: No  
Conversion: No

## 7 Floor 1 - Kitchen



Dimensions: 12'2" x 10'2"  
Area: 123 sq. ft  
Counted as living area: Yes

Heated: Yes  
Finished: Yes  
Enclosed: Yes  
Contiguous: Yes  
Permitted: Yes  
Wet space: No  
Addition: No  
Conversion: No

## 8 Floor 1 - Cl



Dimensions: 6'5" x 7'1"  
Area: 45 sq. ft  
Counted as living area: Yes

Heated: Yes  
Finished: Yes  
Enclosed: Yes  
Contiguous: Yes  
Permitted: Yes  
Wet space: No  
Addition: No  
Conversion: No

# 174 Canterbury Court, Bloomingdale, DuPage County, Illinois, United States, 60108

## 9 Floor 1 - Bath



Dimensions: 7'7" x 10'3"  
Area: 69 sq. ft  
Counted as living area: Yes

Heated: Yes  
Finished: Yes  
Enclosed: Yes  
Contiguous: Yes  
Permitted: Yes  
Wet space: Yes  
Addition: No  
Conversion: No

## 10 Floor 1 - Cl



Dimensions: 6'2" x 4'11"  
Area: 31 sq. ft  
Counted as living area: Yes

Heated: Yes  
Finished: Yes  
Enclosed: Yes  
Contiguous: Yes  
Permitted: Yes  
Wet space: No  
Addition: No  
Conversion: No

## 11 Floor 1 - Living Room



Dimensions: 22'2" x 18'6"  
Area: 364 sq. ft  
Counted as living area: Yes

Heated: Yes  
Finished: Yes  
Enclosed: Yes  
Contiguous: Yes  
Permitted: Yes  
Wet space: No  
Addition: No  
Conversion: No



# 174 Canterbury Court, Bloomingdale, DuPage County, Illinois, United States, 60108

## 12 Floor 1 - Garage



Dimensions: 21'4" x 19'8"  
Area: 401 sq. ft  
Counted as living area: No

Heated: No  
Finished: No  
Enclosed: Yes  
Contiguous: Yes  
Permitted: Yes  
Wet space: No  
Addition: No  
Conversion: No

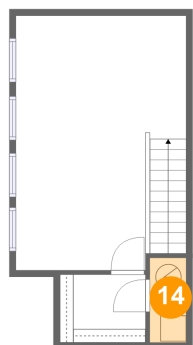
## 13 Floor 1 - Bedroom



Dimensions: 14'8" x 14'2"  
Area: 207 sq. ft  
Counted as living area: Yes

Heated: Yes  
Finished: Yes  
Enclosed: Yes  
Contiguous: Yes  
Permitted: Yes  
Wet space: No  
Addition: No  
Conversion: No

## 14 Floor 2 - Room

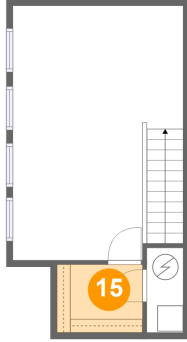


Dimensions: 2'10" x 6'7"  
Area: 18 sq. ft  
Counted as living area: No

Heated: No  
Finished: No  
Enclosed: Yes  
Contiguous: Yes  
Permitted: Yes  
Wet space: No  
Addition: No  
Conversion: No

**174 Canterbury Court, Bloomingdale, DuPage County,  
Illinois, United States, 60108**

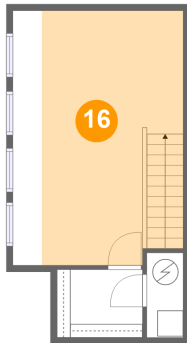
**15 Floor 2 - Cl**



Dimensions: 6'7" x 5'3"  
Area: 35 sq. ft  
Counted as living area: Yes

Heated: Yes  
Finished: Yes  
Enclosed: Yes  
Contiguous: Yes  
Permitted: Yes  
Wet space: No  
Addition: No  
Conversion: No

**16 Floor 2 - Room**



Dimensions: 13'2" x 19'8"  
Area: 211 sq. ft  
Counted as living area: Yes

Heated: Yes  
Finished: Yes  
Enclosed: Yes  
Contiguous: Yes  
Permitted: Yes  
Wet space: No  
Addition: No  
Conversion: No