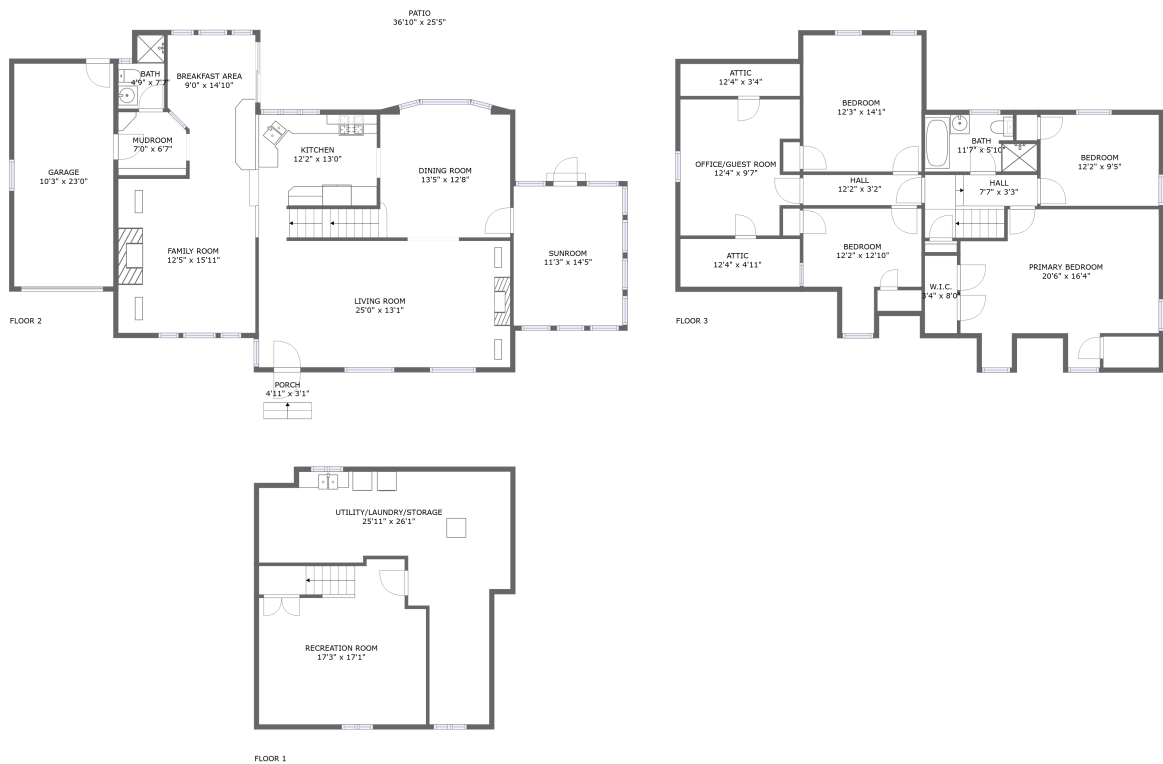






**93 Kenmore Place, Glen Rock, Bergen County,
New Jersey, United States, 07452**

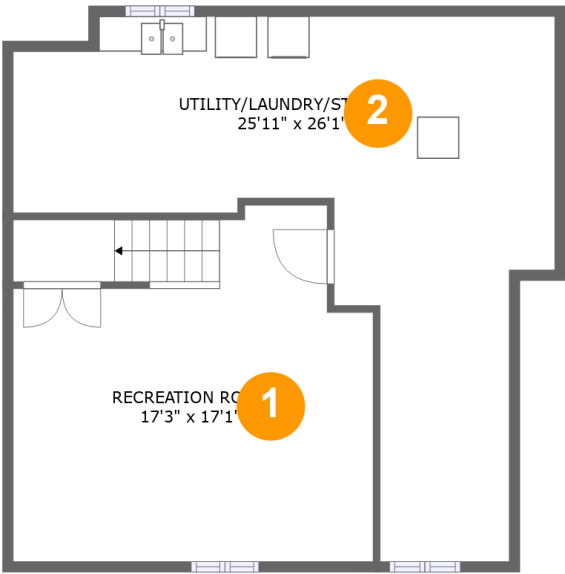


Property Summary

 **1** garages  **4** bedrooms  **2** bathrooms  **0** half baths

 **3** floors  **2,326** Gross Living Area sqft  **4,391** total sqft

**93 Kenmore Place, Glen Rock, Bergen County,
New Jersey, United States, 07452**



Room Dimensions

Floor 1 **Total sqft: 692** **Living area: 0**

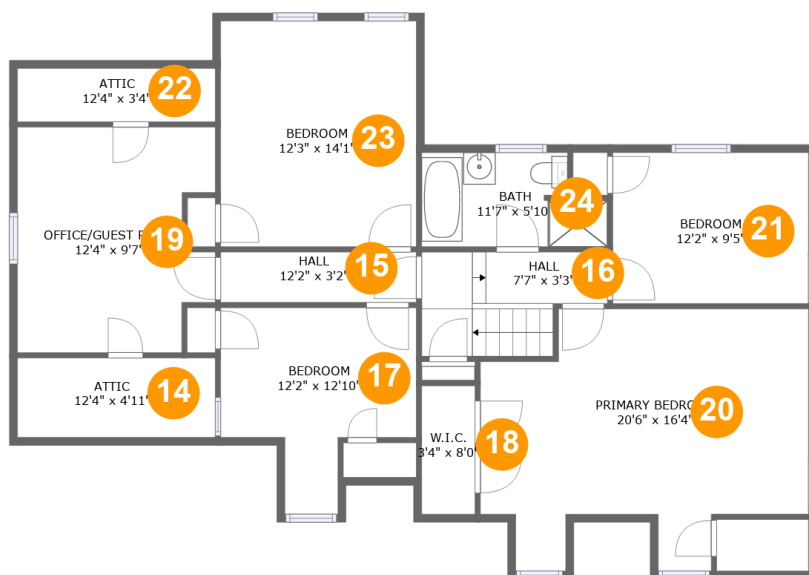
#	Room name	Dimensions	Area (sqft)	Counted as Living Area
1	Recreation Room	17'3" x 17'1"	273 sq. ft	No
2	UTILITY/LAUNDRY/STORAGE	25'11" x 26'1"	353 sq. ft	No

**93 Kenmore Place, Glen Rock, Bergen County,
New Jersey, United States, 07452****Room Dimensions****Floor 2****Total sqft: 2376****Living area: 1367**

#	Room name	Dimensions	Area (sqft)	Counted as Living Area
3	Living Room	25'0" x 13'1"	339 sq. ft	Yes
4	Porch	4'11" x 3'1"	15 sq. ft	No
5	Breakfast Area	9'0" x 14'10"	122 sq. ft	Yes
6	Patio	36'10" x 25'5"	735 sq. ft	No
7	Mudroom	7'0" x 6'7"	44 sq. ft	Yes
8	Family Room	12'5" x 15'11"	227 sq. ft	Yes
9	Garage	10'3" x 23'0"	235 sq. ft	No
10	Bath	4'9" x 7'7"	30 sq. ft	Yes
11	Sunroom	11'3" x 14'5"	162 sq. ft	Yes
12	Dining Room	13'5" x 12'8"	170 sq. ft	Yes
13	Kitchen	12'2" x 13'0"	154 sq. ft	Yes

Scan captured on Wed, 24 Jul 2024 17:41:40 GMT

Information is calculated by CubiCasa technology; deemed highly reliable but not guaranteed.

**93 Kenmore Place, Glen Rock, Bergen County,
New Jersey, United States, 07452****Room Dimensions****Floor 3****Total sqft: 1323****Living area: 959**

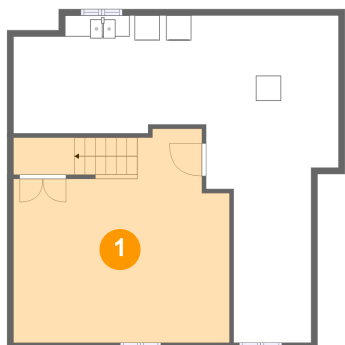
#	Room name	Dimensions	Area (sqft)	Counted as Living Area
14	Attic	12'4" x 4'11"	61 sq. ft	No
15	Hall	12'2" x 3'2"	38 sq. ft	Yes
16	Hall	7'7" x 3'3"	64 sq. ft	Yes
17	Bedroom	12'2" x 12'10"	103 sq. ft	Yes
18	W.i.c.	3'4" x 8'0"	23 sq. ft	Yes
19	OFFICE/GUEST Room	12'4" x 9'7"	109 sq. ft	Yes
20	Primary Bedroom	20'6" x 16'4"	244 sq. ft	Yes
21	Bedroom	12'2" x 9'5"	115 sq. ft	Yes
22	Attic	12'4" x 3'4"	41 sq. ft	No
23	Bedroom	12'3" x 14'1"	145 sq. ft	Yes

Scan captured on Wed, 24 Jul 2024 17:41:40 GMT

Information is calculated by CubiCasa technology; deemed highly reliable but not guaranteed.

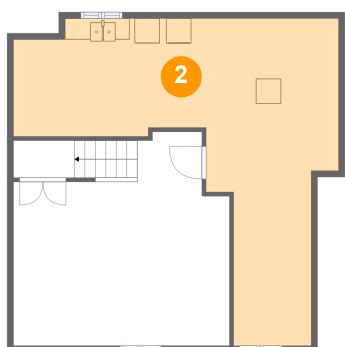
**93 Kenmore Place, Glen Rock, Bergen County,
New Jersey, United States, 07452**

#	Room name	Dimensions	Area (sqft)	Counted as Living Area
24	Bath	11'7" x 5'10"	60 sq. ft	No

**93 Kenmore Place, Glen Rock, Bergen County,
New Jersey, United States, 07452****1 Floor 1 - Recreation Room**

Dimensions: 17'3" x 17'1"
Area: 273 sq. ft
Counted as Living Area: No

Heated: Yes
Finished: Yes
Enclosed: Yes
Contiguous: Yes
Permitted: Yes
Wet Space: No
Addition: No
Conversion: No

2 Floor 1 - UTILITY/LAUNDRY/STORAGE

Dimensions: 25'11" x 26'1"
Area: 353 sq. ft
Counted as Living Area: No

Heated: No
Finished: No
Enclosed: Yes
Contiguous: Yes
Permitted: Yes
Wet Space: No
Addition: No
Conversion: No

**93 Kenmore Place, Glen Rock, Bergen County,
New Jersey, United States, 07452**

3 Floor 2 - Living Room



Dimensions: 25'0" x 13'1"
Area: 339 sq. ft
Counted as Living Area:
Yes

Heated: Yes
Finished: Yes
Enclosed: Yes
Contiguous:
Yes
Permitted: Yes
Wet Space: No
Addition: No
Conversion: No

4 Floor 2 - Porch



Dimensions: 4'11" x 3'1"
Area: 15 sq. ft
Counted as Living Area: No

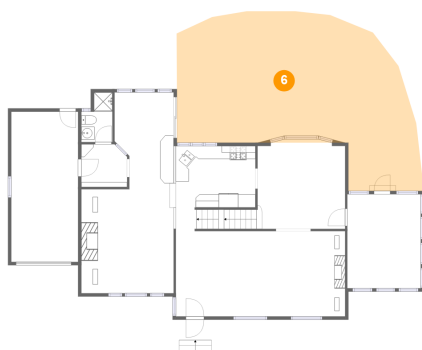
Heated: No
Finished: Yes
Enclosed: No
Contiguous: Yes
Permitted: Yes
Wet Space: No
Addition: No
Conversion: No

5 Floor 2 - Breakfast Area



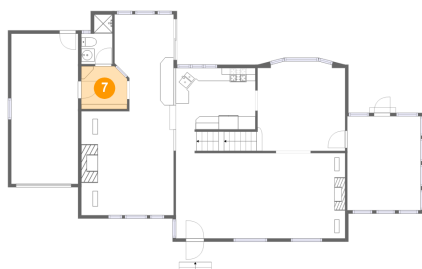
Dimensions: 9'0" x 14'10"
Area: 122 sq. ft
Counted as Living Area:
Yes

Heated: Yes
Finished: Yes
Enclosed: Yes
Contiguous:
Yes
Permitted: Yes
Wet Space: No
Addition: No
Conversion: No

**93 Kenmore Place, Glen Rock, Bergen County,
New Jersey, United States, 07452****6 Floor 2 - Patio**

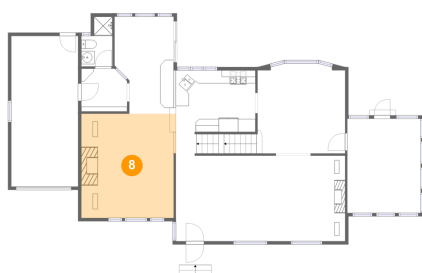
Dimensions: 36'10" x 25'5"
Area: 735 sq. ft
Counted as Living Area: No

Heated: No
Finished: Yes
Enclosed: No
Contiguous: Yes
Permitted: Yes
Wet Space: No
Addition: No
Conversion: No

7 Floor 2 - Mudroom

Dimensions: 7'0" x 6'7"
Area: 44 sq. ft
Counted as Living Area: Yes

Heated: Yes
Finished: Yes
Enclosed: Yes
Contiguous: Yes
Permitted: Yes
Wet Space: No
Addition: No
Conversion: No

8 Floor 2 - Family Room

Dimensions: 12'5" x 15'11"
Area: 227 sq. ft
Counted as Living Area: Yes

Heated: Yes
Finished: Yes
Enclosed: Yes
Contiguous: Yes
Permitted: Yes
Wet Space: No
Addition: No
Conversion: No

**93 Kenmore Place, Glen Rock, Bergen County,
New Jersey, United States, 07452****9 Floor 2 - Garage**

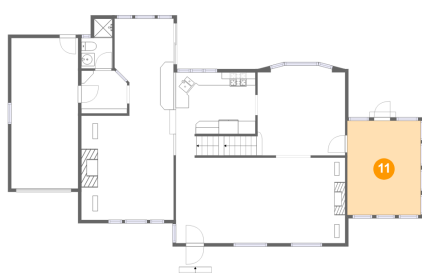
Dimensions: 10'3" x 23'0"
Area: 235 sq. ft
Counted as Living Area: No

Heated: No
Finished: No
Enclosed: Yes
Contiguous: Yes
Permitted: Yes
Wet Space: No
Addition: No
Conversion: No

10 Floor 2 - Bath

Dimensions: 4'9" x 7'7"
Area: 30 sq. ft
Counted as Living Area:
Yes

Heated: Yes
Finished: Yes
Enclosed: Yes
Contiguous:
Yes
Permitted: Yes
Wet Space: Yes
Addition: No
Conversion: No

11 Floor 2 - Sunroom

Dimensions: 11'3" x 14'5"
Area: 162 sq. ft
Counted as Living Area:
Yes

Heated: Yes
Finished: Yes
Enclosed: Yes
Contiguous:
Yes
Permitted: Yes
Wet Space: No
Addition: No
Conversion: No

**93 Kenmore Place, Glen Rock, Bergen County,
New Jersey, United States, 07452****12 Floor 2 - Dining Room**

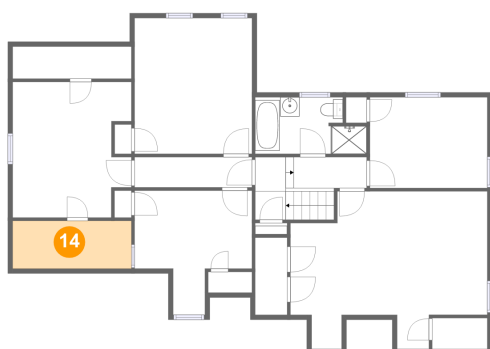
Dimensions: 13'5" x 12'8"
Area: 170 sq. ft
Counted as Living Area:
Yes

Heated: Yes
Finished: Yes
Enclosed: Yes
Contiguous:
Yes
Permitted: Yes
Wet Space: No
Addition: No
Conversion: No

13 Floor 2 - Kitchen

Dimensions: 12'2" x 13'0"
Area: 154 sq. ft
Counted as Living Area:
Yes

Heated: Yes
Finished: Yes
Enclosed: Yes
Contiguous:
Yes
Permitted: Yes
Wet Space: No
Addition: No
Conversion: No

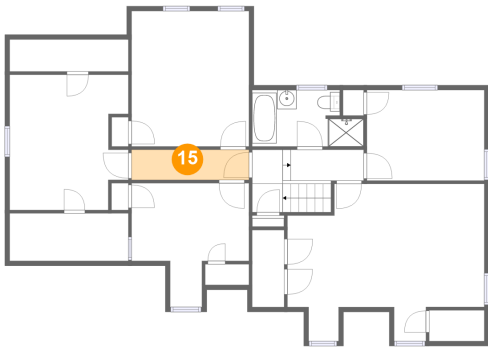
14 Floor 3 - Attic

Dimensions: 12'4" x 4'11"
Area: 61 sq. ft
Counted as Living Area: No

Heated: No
Finished: No
Enclosed: Yes
Contiguous: Yes
Permitted: Yes
Wet Space: No
Addition: No
Conversion: No

**93 Kenmore Place, Glen Rock, Bergen County,
New Jersey, United States, 07452**

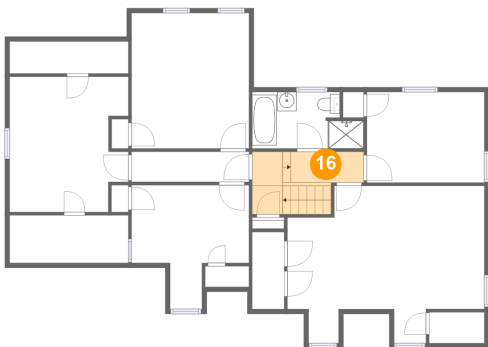
15 Floor 3 - Hall



Dimensions: 12'2" x 3'2"
Area: 38 sq. ft
Counted as Living Area:
Yes

Heated: Yes
Finished: Yes
Enclosed: Yes
Contiguous:
Yes
Permitted: Yes
Wet Space: No
Addition: No
Conversion: No

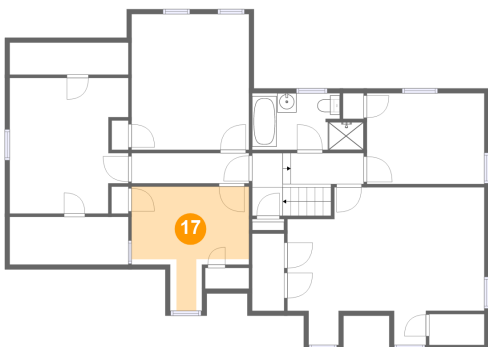
16 Floor 3 - Hall



Dimensions: 7'7" x 3'3"
Area: 64 sq. ft
Counted as Living Area:
Yes

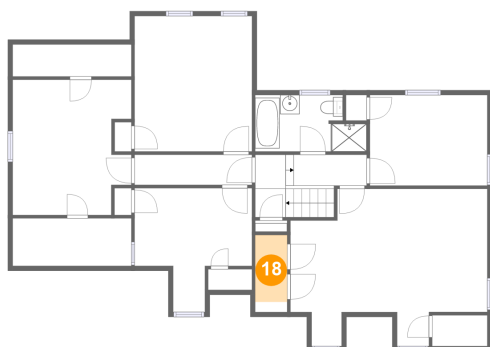
Heated: Yes
Finished: Yes
Enclosed: Yes
Contiguous:
Yes
Permitted: Yes
Wet Space: No
Addition: No
Conversion: No

17 Floor 3 - Bedroom



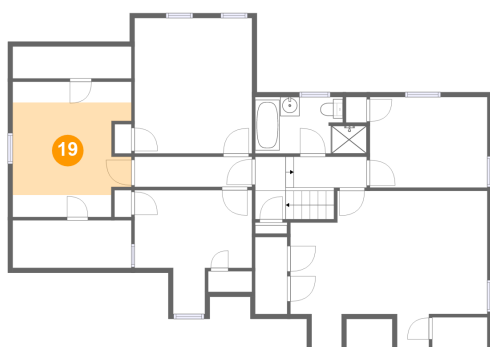
Dimensions: 12'2" x 12'10"
Area: 103 sq. ft
Counted as Living Area:
Yes

Heated: Yes
Finished: Yes
Enclosed: Yes
Contiguous:
Yes
Permitted: Yes
Wet Space: No
Addition: No
Conversion: No

**93 Kenmore Place, Glen Rock, Bergen County,
New Jersey, United States, 07452****18 Floor 3 - W.i.c.**

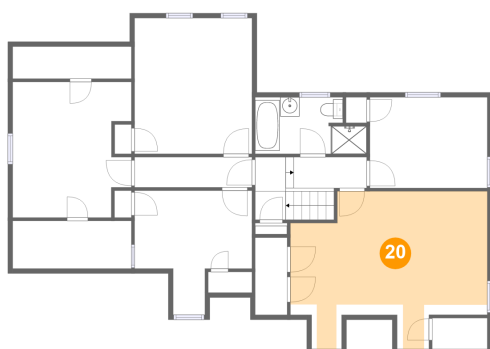
Dimensions: 3'4" x 8'0"
Area: 23 sq. ft
Counted as Living Area:
Yes

Heated: Yes
Finished: Yes
Enclosed: Yes
Contiguous:
Yes
Permitted: Yes
Wet Space: No
Addition: No
Conversion: No

19 Floor 3 - OFFICE/GUEST Room

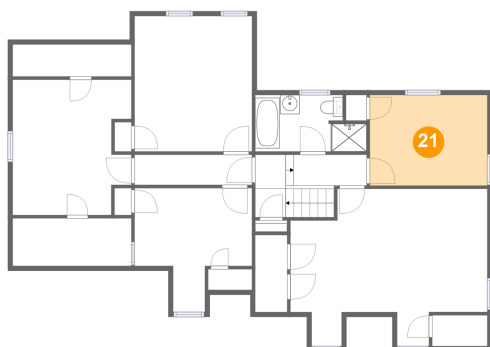
Dimensions: 12'4" x 9'7"
Area: 109 sq. ft
Counted as Living Area:
Yes

Heated: Yes
Finished: Yes
Enclosed: Yes
Contiguous:
Yes
Permitted: Yes
Wet Space: No
Addition: No
Conversion: No

20 Floor 3 - Primary Bedroom

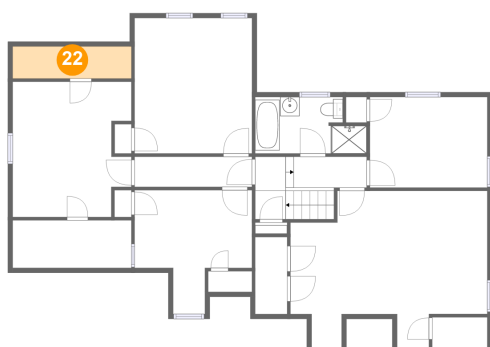
Dimensions: 20'6" x 16'4"
Area: 244 sq. ft
Counted as Living Area:
Yes

Heated: Yes
Finished: Yes
Enclosed: Yes
Contiguous:
Yes
Permitted: Yes
Wet Space: No
Addition: No
Conversion: No

**93 Kenmore Place, Glen Rock, Bergen County,
New Jersey, United States, 07452****21 Floor 3 - Bedroom**

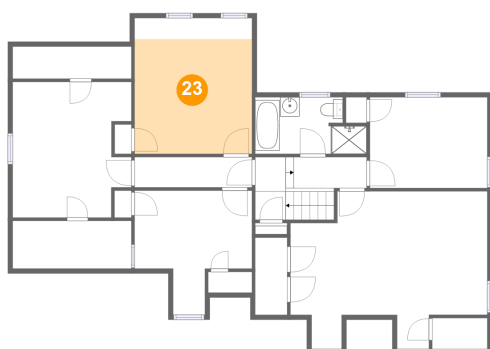
Dimensions: 12'2" x 9'5"
Area: 115 sq. ft
Counted as Living Area:
Yes

Heated: Yes
Finished: Yes
Enclosed: Yes
Contiguous:
Yes
Permitted: Yes
Wet Space: No
Addition: No
Conversion: No

22 Floor 3 - Attic

Dimensions: 12'4" x 3'4"
Area: 41 sq. ft
Counted as Living Area: No

Heated: No
Finished: No
Enclosed: Yes
Contiguous: Yes
Permitted: Yes
Wet Space: No
Addition: No
Conversion: No

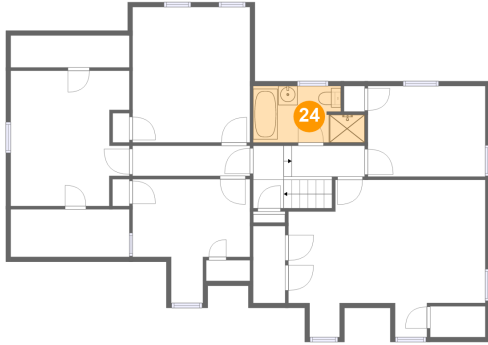
23 Floor 3 - Bedroom

Dimensions: 12'3" x 14'1"
Area: 145 sq. ft
Counted as Living Area:
Yes

Heated: Yes
Finished: Yes
Enclosed: Yes
Contiguous:
Yes
Permitted: Yes
Wet Space: No
Addition: No
Conversion: No

**93 Kenmore Place, Glen Rock, Bergen County,
New Jersey, United States, 07452**

24 Floor 3 - Bath



Dimensions: 11'7" x 5'10"
Area: 60 sq. ft
Counted as Living Area: No

Heated: Yes
Finished: Yes
Enclosed: Yes
Contiguous: Yes
Permitted: Yes
Wet Space: Yes
Addition: No
Conversion: No