

Home report

2998 Northview Drive Southwest, Raleigh Court, Roanoke,
Roanoke city, Virginia, United States, 24015



Total Area: 2549 sq. ft
Below Ground: 416 sq. ft, Floor 2: 1170 sq. ft, Floor 3: 963 sq. ft
Excluded: Outdoor Patio Covered 228 sq. ft, Garage 548 sq. ft, Fireplace 21 sq. ft, Outdoor Porch 56 sq. ft, Outdoor Deck 306 sq. ft, Embeddedwindow 14 sq. ft

Property summary

 **3** Floors

 **4** Bedrooms

 **2** Bathrooms

Home report

**2998 Northview Drive Southwest, Raleigh Court, Roanoke,
Roanoke city, Virginia, United States, 24015**



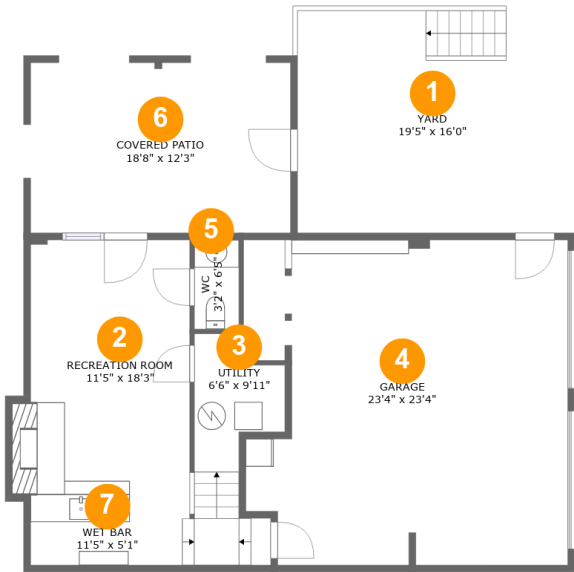
2
Half baths



1
Garages

Home report

2998 Northview Drive Southwest, Raleigh Court, Roanoke,
Roanoke city, Virginia, United States, 24015



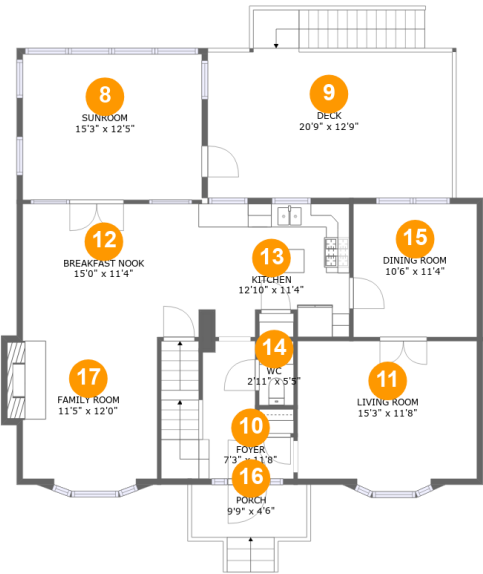
Room dimensions

Floor 1 Below ground Total:418sqft Excluded: 786sqft

#		Max Dimensions	sqft	Included
1	Yard	19'5" x 16'0"	310 sq. ft	No
2	Recreation Room	11'5" x 18'3"	218 sq. ft	Yes
3	Utility	6'6" x 9'11"	48 sq. ft	Yes
4	Garage	23'4" x 23'4"	512 sq. ft	No
5	WC	3'2" x 6'5"	20 sq. ft	Yes
6	Covered Patio	18'8" x 12'3"	228 sq. ft	No
7	Wet Bar	11'5" x 5'1"	89 sq. ft	Yes

Home report

2998 Northview Drive Southwest, Raleigh Court, Roanoke,
Roanoke city, Virginia, United States, 24015



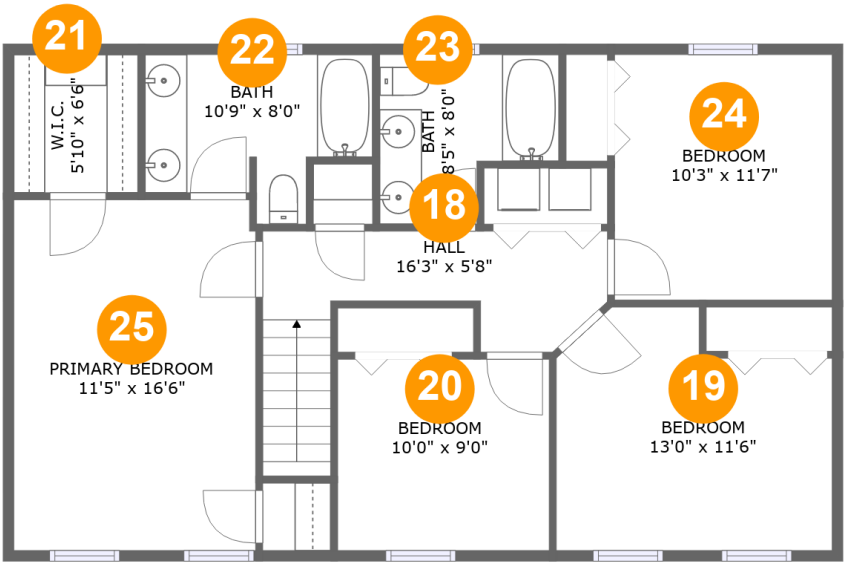
Room dimensions

Floor 2 Total:1170sqft Excluded: 386sqft

#		Max Dimensions	sqft	Included
8	Sunroom	15'3" x 12'5"	188 sq. ft	Yes
9	Deck	20'9" x 12'9"	306 sq. ft	No
10	Foyer	7'3" x 11'8"	102 sq. ft	Yes
11	Living Room	15'3" x 11'8"	178 sq. ft	Yes
12	Breakfast Nook	15'0" x 11'4"	169 sq. ft	Yes
13	Kitchen	12'10" x 11'4"	133 sq. ft	Yes
14	WC	2'11" x 5'5"	16 sq. ft	Yes
15	Dining Room	10'6" x 11'4"	119 sq. ft	Yes
16	Porch	9'9" x 4'6"	56 sq. ft	No
17	Family Room	11'5" x 12'0"	146 sq. ft	Yes

Home report

2998 Northview Drive Southwest, Raleigh Court, Roanoke,
Roanoke city, Virginia, United States, 24015

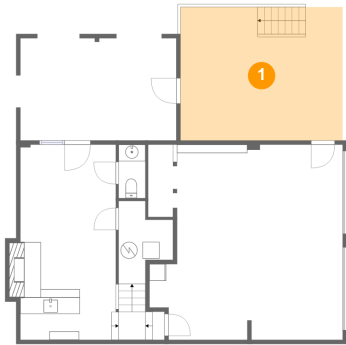


Room dimensions

Floor 3 Total:963sqft Excluded: 0sqft

#		Max Dimensions	sqft	Included
18	Hall	16'3" x 5'8"	91 sq. ft	Yes
19	Bedroom	13'0" x 11'6"	131 sq. ft	Yes
20	Bedroom	10'0" x 9'0"	90 sq. ft	Yes
21	W.I.C.	5'10" x 6'6"	38 sq. ft	Yes
22	Bath	10'9" x 8'0"	67 sq. ft	Yes
23	Bath	8'5" x 8'0"	56 sq. ft	Yes
24	Bedroom	10'3" x 11'7"	118 sq. ft	Yes
25	Primary Bedroom	11'5" x 16'6"	188 sq. ft	Yes

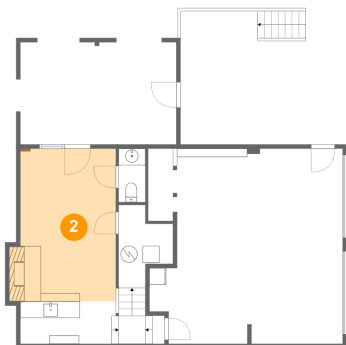
1 Floor 1 - Yard



Max Dimensions: 19'5" x 16'0"
Calculated Area: 310 sq. ft
Included: No

Heated: No
Finished: No
Enclosed: No
Contiguous: Yes
Permitted: No
Wet space: No
Addition: No
Conversion: No

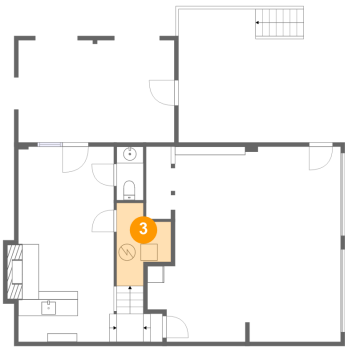
2 Floor 1 - Recreation Room



Max Dimensions: 11'5" x 18'3"
Calculated Area: 218 sq. ft
Included: Yes

Heated: Yes
Finished: Yes
Enclosed: Yes
Contiguous: Yes
Permitted: Yes
Wet space: No
Addition: No
Conversion: No

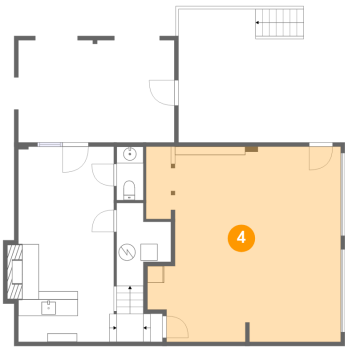
3 Floor 1 - Utility



Max Dimensions: 6'6" x 9'11"
Calculated Area: 48 sq. ft
Included: Yes

Heated: Yes
Finished: Yes
Enclosed: Yes
Contiguous: Yes
Permitted: Yes
Wet space: No
Addition: No
Conversion: No

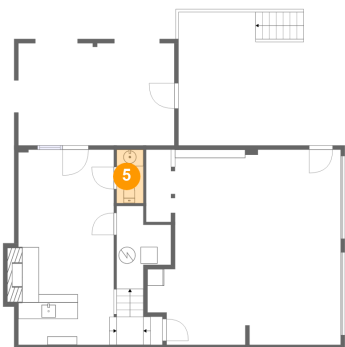
4 Floor 1 - Garage



Max Dimensions: 23'4" x 23'4"
Calculated Area: 512 sq. ft
Included: No

Heated: No
Finished: No
Enclosed: Yes
Contiguous: Yes
Permitted: Yes
Wet space: No
Addition: No
Conversion: No

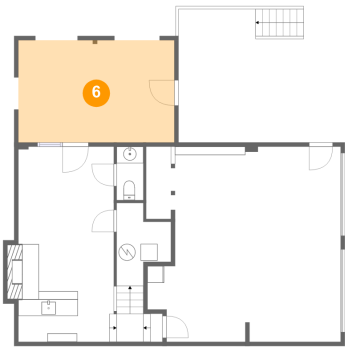
5 Floor 1 - WC



Max Dimensions: 3'2" x 6'5"
Calculated Area: 20 sq. ft
Included: Yes

Heated: Yes
Finished: Yes
Enclosed: Yes
Contiguous: Yes
Permitted: Yes
Wet space: Yes
Addition: No
Conversion: No

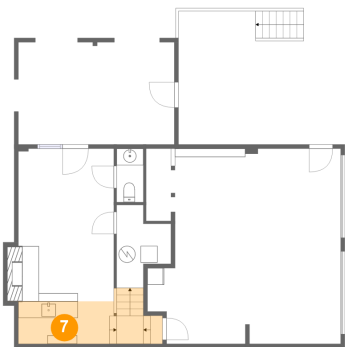
6 Floor 1 - Covered Patio



Max Dimensions: 18'8" x 12'3"
Calculated Area: 228 sq. ft
Included: No

Heated: No
Finished: Yes
Enclosed: No
Contiguous: Yes
Permitted: Yes
Wet space: No
Addition: No
Conversion: No

7 Floor 1 - Wet Bar



Max Dimensions: 11'5" x 5'1"
Calculated Area: 89 sq. ft
Included: Yes

Heated: Yes
Finished: Yes
Enclosed: Yes
Contiguous: Yes
Permitted: Yes
Wet space: No
Addition: No
Conversion: No

8 Floor 2 - Sunroom



Max Dimensions: 15'3" x 12'5"
Calculated Area: 188 sq. ft
Included: Yes

Heated: Yes
Finished: Yes
Enclosed: Yes
Contiguous: Yes
Permitted: Yes
Wet space: No
Addition: No
Conversion: No

9 Floor 2 - Deck



Max Dimensions: 20'9" x 12'9"
Calculated Area: 306 sq. ft
Included: No

Heated: No
Finished: Yes
Enclosed: No
Contiguous: Yes
Permitted: Yes
Wet space: No
Addition: No
Conversion: No

10 Floor 2 - Foyer



Max Dimensions: 7'3" x 11'8"
Calculated Area: 102 sq. ft
Included: Yes

Heated: Yes
Finished: Yes
Enclosed: Yes
Contiguous: Yes
Permitted: Yes
Wet space: No
Addition: No
Conversion: No

11 Floor 2 - Living Room



Max Dimensions: 15'3" x 11'8"
Calculated Area: 178 sq. ft
Included: Yes

Heated: Yes
Finished: Yes
Enclosed: Yes
Contiguous: Yes
Permitted: Yes
Wet space: No
Addition: No
Conversion: No

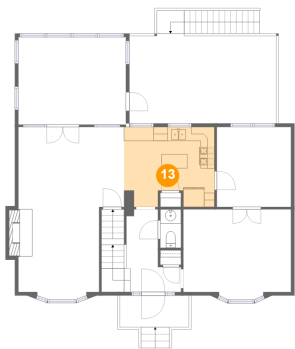
12 Floor 2 - Breakfast Nook



Max Dimensions: 15'0" x 11'4"
Calculated Area: 169 sq. ft
Included: Yes

Heated: Yes
Finished: Yes
Enclosed: Yes
Contiguous: Yes
Permitted: Yes
Wet space: No
Addition: No
Conversion: No

13 Floor 2 - Kitchen



Max Dimensions: 12'10" x 11'4"
Calculated Area: 133 sq. ft
Included: Yes

Heated: Yes
Finished: Yes
Enclosed: Yes
Contiguous: Yes
Permitted: Yes
Wet space: No
Addition: No
Conversion: No

14 Floor 2 - WC



Max Dimensions: 2'11" x 5'5"
Calculated Area: 16 sq. ft
Included: Yes

Heated: Yes
Finished: Yes
Enclosed: Yes
Contiguous: Yes
Permitted: Yes
Wet space: Yes
Addition: No
Conversion: No

2998 Northview Drive Southwest, Raleigh Court, Roanoke,
Roanoke city, Virginia, United States, 24015

15 Floor 2 - Dining Room



Max Dimensions: 10'6" x 11'4"
Calculated Area: 119 sq. ft
Included: Yes

Heated: Yes
Finished: Yes
Enclosed: Yes
Contiguous: Yes
Permitted: Yes
Wet space: No
Addition: No
Conversion: No

16 Floor 2 - Porch



Max Dimensions: 9'9" x 4'6"
Calculated Area: 56 sq. ft
Included: No

Heated: No
Finished: Yes
Enclosed: No
Contiguous: Yes
Permitted: Yes
Wet space: No
Addition: No
Conversion: No

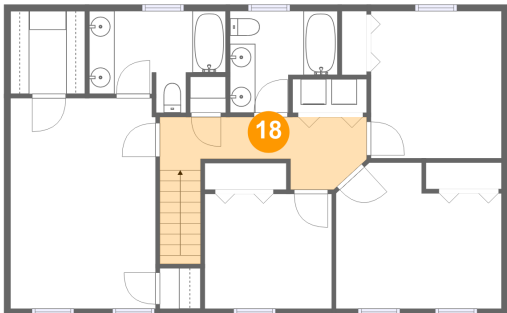
17 Floor 2 - Family Room



Max Dimensions: 11'5" x 12'0"
Calculated Area: 146 sq. ft
Included: Yes

Heated: Yes
Finished: Yes
Enclosed: Yes
Contiguous: Yes
Permitted: Yes
Wet space: No
Addition: No
Conversion: No

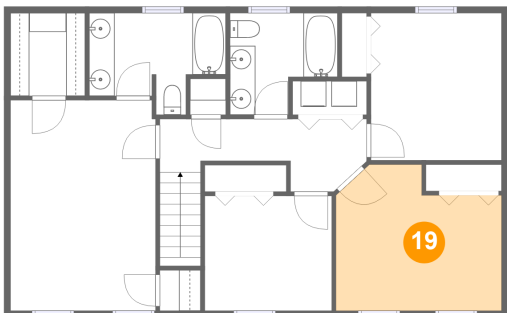
18 Floor 3 - Hall



Max Dimensions: 16'3" x 5'8"
Calculated Area: 91 sq. ft
Included: Yes

Heated: Yes
Finished: Yes
Enclosed: Yes
Contiguous: Yes
Permitted: Yes
Wet space: No
Addition: No
Conversion: No

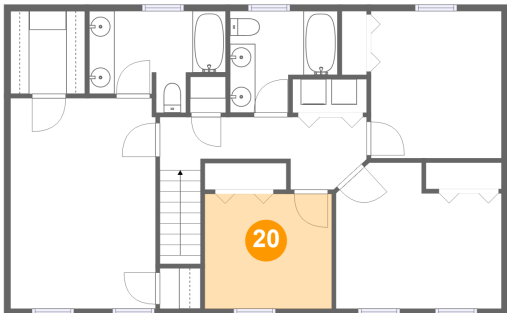
19 Floor 3 - Bedroom



Max Dimensions: 13'0" x 11'6"
Calculated Area: 131 sq. ft
Included: Yes

Heated: Yes
Finished: Yes
Enclosed: Yes
Contiguous: Yes
Permitted: Yes
Wet space: No
Addition: No
Conversion: No

20 Floor 3 - Bedroom



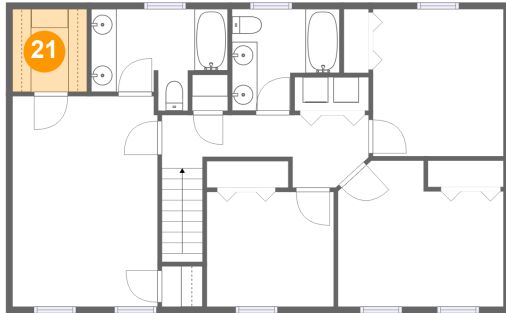
Max Dimensions: 10'0" x 9'0"
Calculated Area: 90 sq. ft
Included: Yes

Heated: Yes
Finished: Yes
Enclosed: Yes
Contiguous: Yes
Permitted: Yes
Wet space: No
Addition: No
Conversion: No

Home report

2998 Northview Drive Southwest, Raleigh Court, Roanoke,
Roanoke city, Virginia, United States, 24015

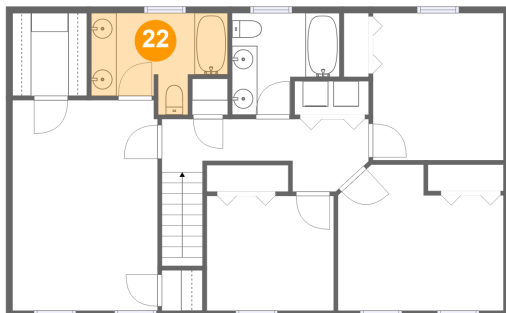
21 Floor 3 - W.I.C.



Max Dimensions: 5'10" x 6'6"
Calculated Area: 38 sq. ft
Included: Yes

Heated: Yes
Finished: Yes
Enclosed: Yes
Contiguous: Yes
Permitted: Yes
Wet space: No
Addition: No
Conversion: No

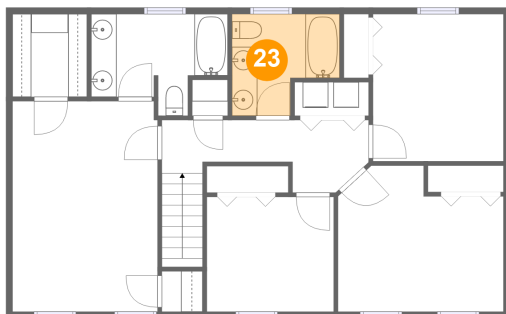
22 Floor 3 - Bath



Max Dimensions: 10'9" x 8'0"
Calculated Area: 67 sq. ft
Included: Yes

Heated: Yes
Finished: Yes
Enclosed: Yes
Contiguous: Yes
Permitted: Yes
Wet space: Yes
Addition: No
Conversion: No

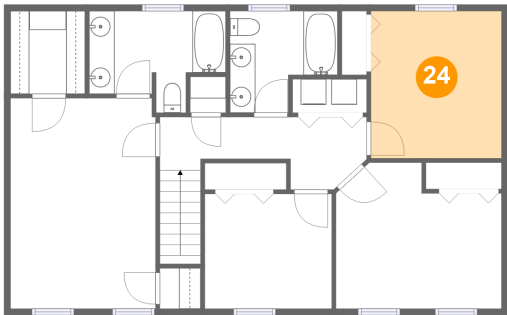
23 Floor 3 - Bath



Max Dimensions: 8'5" x 8'0"
Calculated Area: 56 sq. ft
Included: Yes

Heated: Yes
Finished: Yes
Enclosed: Yes
Contiguous: Yes
Permitted: Yes
Wet space: Yes
Addition: No
Conversion: No

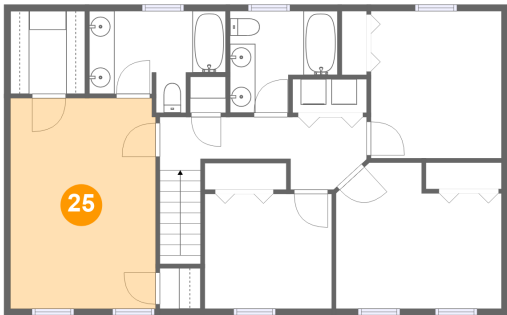
24 Floor 3 - Bedroom



Max Dimensions: 10'3" x 11'7"
Calculated Area: 118 sq. ft
Included: Yes

Heated: Yes
Finished: Yes
Enclosed: Yes
Contiguous: Yes
Permitted: Yes
Wet space: No
Addition: No
Conversion: No

25 Floor 3 - Primary Bedroom



Max Dimensions: 11'5" x 16'6"
Calculated Area: 188 sq. ft
Included: Yes

Heated: Yes
Finished: Yes
Enclosed: Yes
Contiguous: Yes
Permitted: Yes
Wet space: No
Addition: No
Conversion: No