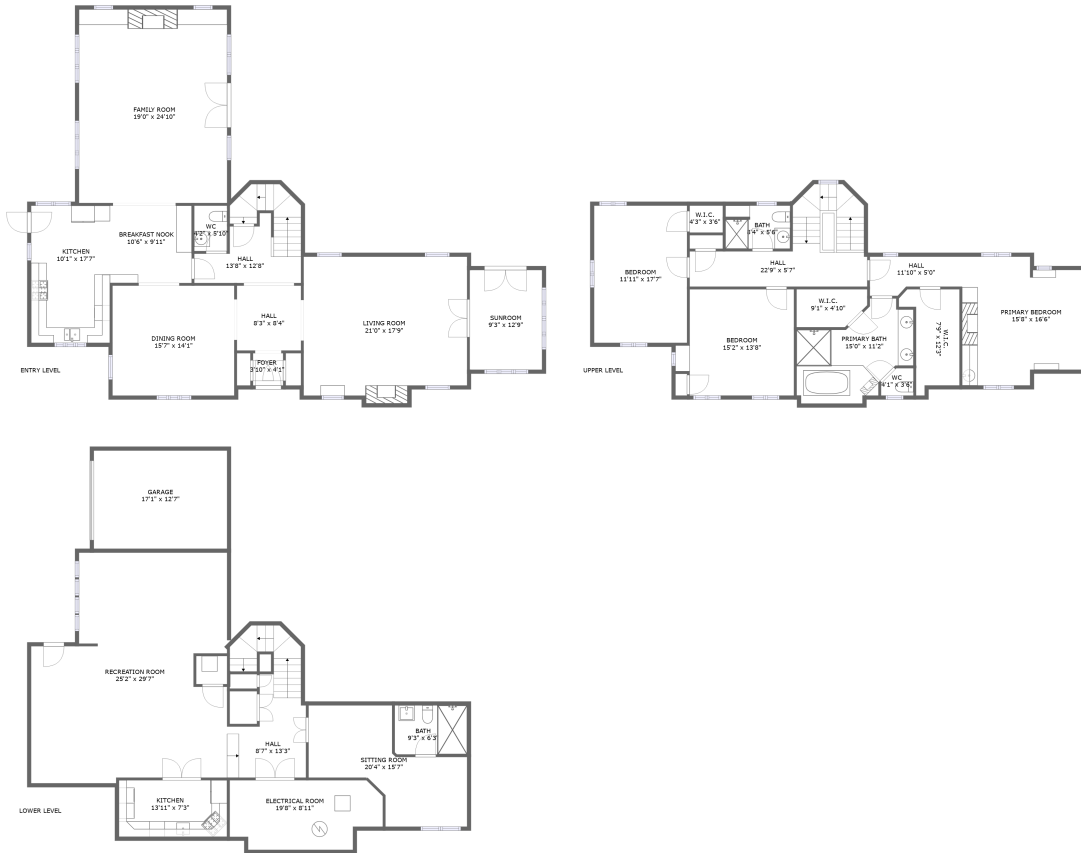


3245 Brightwood Place Southwest, South Roanoke, Roanoke, Roanoke, Virginia, United

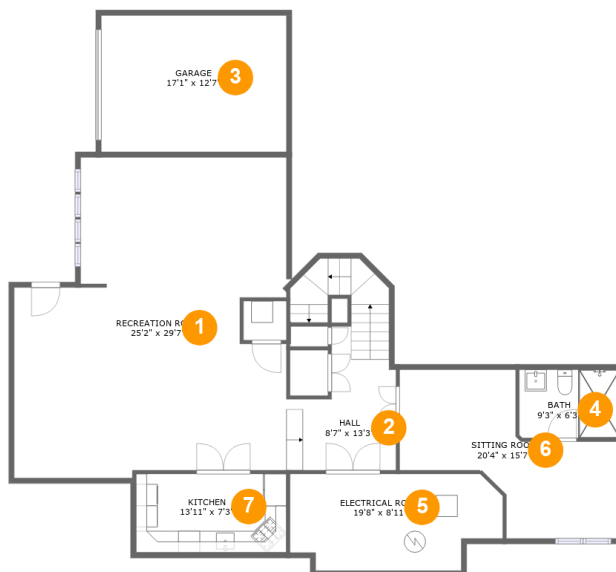


Property summary

1 Garages **3** Bedrooms **3** Bathrooms **1** Half baths

3 Floors **3,811** Gross living area sqft **4,923** Total sqft

3245 Brightwood Place Southwest, South Roanoke, Roanoke, Roanoke, Virginia, United



Room dimensions

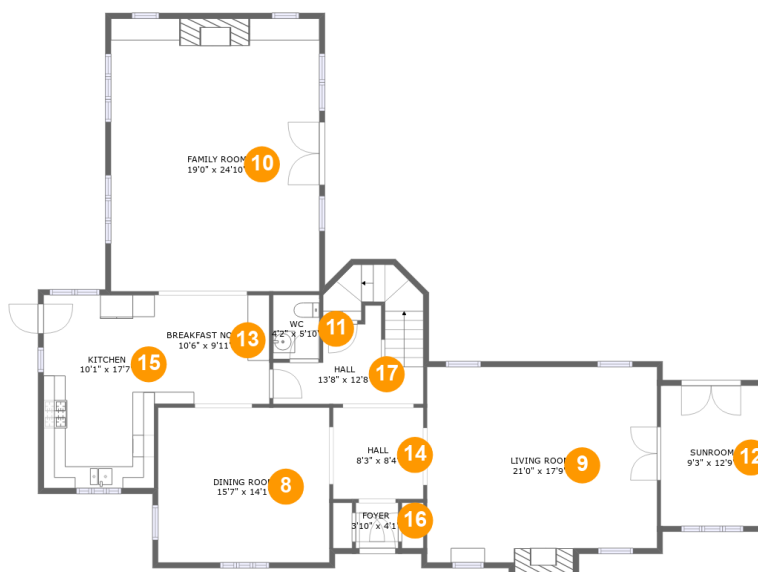
Floor 1

Total sqft: 1709

Living area: 603

#		Dimensions	sqft	Counted as living area
1	Recreation Room	25'2" x 29'7"	640 sq. ft	No
2	Hall	8'7" x 13'3"	146 sq. ft	Yes
3	Garage	17'1" x 12'7"	215 sq. ft	No
4	Bath	9'3" x 6'3"	58 sq. ft	Yes
5	Room	19'8" x 8'11"	158 sq. ft	No
6	Living Room	20'4" x 15'7"	193 sq. ft	Yes
7	Kitchen	13'11" x 7'3"	101 sq. ft	Yes

3245 Brightwood Place Southwest, South Roanoke, Roanoke, Roanoke, Virginia, United



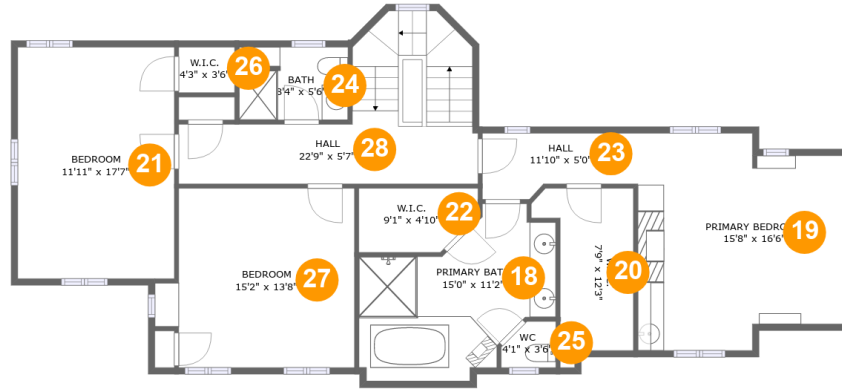
Room dimensions

Floor 2

Total sqft: 1874 **Living area: 1868**

#		Dimensions	sqft	Counted as living area
8	Dining Room	15'7" x 14'1"	220 sq. ft	Yes
9	Living Room	21'0" x 17'9"	369 sq. ft	Yes
10	Living Room	19'0" x 24'10"	472 sq. ft	Yes
11	Bath	4'2" x 5'10"	25 sq. ft	Yes
12	Room	9'3" x 12'9"	119 sq. ft	Yes
13	Nook	10'6" x 9'11"	104 sq. ft	Yes
14	Hall	8'3" x 8'4"	68 sq. ft	Yes
15	Kitchen	10'1" x 17'7"	178 sq. ft	Yes
16	Entry	3'10" x 4'1"	16 sq. ft	Yes
17	Hall	13'8" x 12'8"	122 sq. ft	Yes

3245 Brightwood Place Southwest, South Roanoke, Roanoke, Roanoke, Virginia, United



Room dimensions

Floor 3

Total sqft: 1340

Living area: 1340

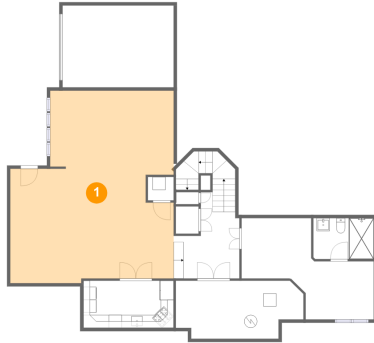
#		Dimensions	sqft	Counted as living area
18	Bath	15'0" x 11'2"	144 sq. ft	Yes
19	Bedroom	15'8" x 16'6"	233 sq. ft	Yes
20	Cl	7'9" x 12'3"	74 sq. ft	Yes
21	Bedroom	11'11" x 17'7"	210 sq. ft	Yes
22	Cl	9'1" x 4'10"	40 sq. ft	Yes
23	Hall	11'10" x 5'0"	51 sq. ft	Yes
24	Bath	8'4" x 5'6"	45 sq. ft	Yes
25	Bath	4'1" x 3'6"	13 sq. ft	Yes
26	Cl	4'3" x 3'6"	15 sq. ft	Yes
27	Bedroom	15'2" x 13'8"	188 sq. ft	Yes
28	Hall	22'9" x 5'7"	174 sq. ft	Yes

Scan captured on Thu, 31 Oct 2024 15:52:35 GMT

Information is calculated by Cubicasa technology deemed highly reliable but not guaranteed.

3245 Brightwood Place Southwest, South Roanoke, Roanoke, Roanoke, Virginia, United

1 Floor 1 - Recreation Room



Dimensions: 25'2" x 29'7"
Area: 640 sq. ft
Counted as living area: No

Heated: Yes
Finished: Yes
Enclosed: Yes
Contiguous: Yes
Permitted: Yes
Wet space: No
Addition: No
Conversion: No

2 Floor 1 - Hall

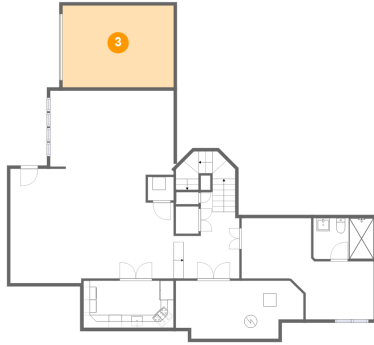


Dimensions: 8'7" x 13'3"
Area: 146 sq. ft
Counted as living area: Yes

Heated: Yes
Finished: Yes
Enclosed: Yes
Contiguous: Yes
Permitted: Yes
Wet space: No
Addition: No
Conversion: No

3245 Brightwood Place Southwest, South Roanoke, Roanoke, Roanoke, Virginia, United

3 Floor 1 - Garage



Dimensions: 17'1" x 12'7"
Area: 215 sq. ft
Counted as living area: No

Heated: No
Finished: No
Enclosed: Yes
Contiguous: Yes
Permitted: Yes
Wet space: No
Addition: No
Conversion: No

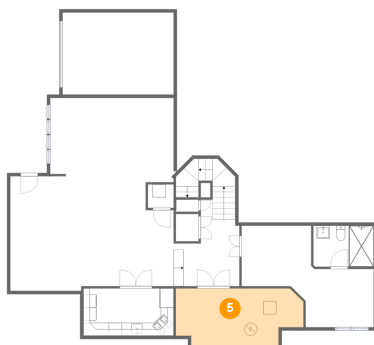
4 Floor 1 - Bath



Dimensions: 9'3" x 6'3"
Area: 58 sq. ft
Counted as living area: Yes

Heated: Yes
Finished: Yes
Enclosed: Yes
Contiguous: Yes
Permitted: Yes
Wet space: Yes
Addition: No
Conversion: No

5 Floor 1 - Room

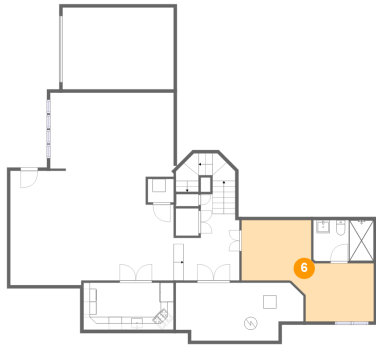


Dimensions: 19'8" x 8'11"
Area: 158 sq. ft
Counted as living area: No

Heated: No
Finished: No
Enclosed: Yes
Contiguous: Yes
Permitted: Yes
Wet space: No
Addition: No
Conversion: No

3245 Brightwood Place Southwest, South Roanoke, Roanoke, Roanoke, Virginia, United

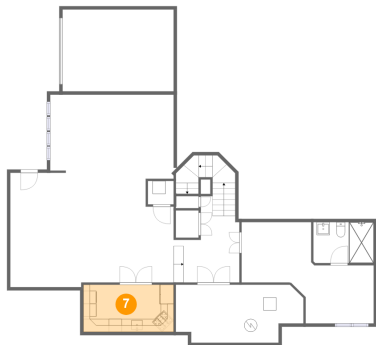
6 Floor 1 - Living Room



Dimensions: 20'4" x 15'7"
Area: 193 sq. ft
Counted as living area: Yes

Heated: Yes
Finished: Yes
Enclosed: Yes
Contiguous: Yes
Permitted: Yes
Wet space: No
Addition: No
Conversion: No

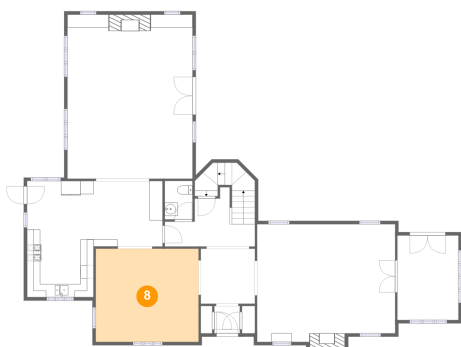
7 Floor 1 - Kitchen



Dimensions: 13'11" x 7'3"
Area: 101 sq. ft
Counted as living area: Yes

Heated: Yes
Finished: Yes
Enclosed: Yes
Contiguous: Yes
Permitted: Yes
Wet space: No
Addition: No
Conversion: No

8 Floor 2 - Dining Room

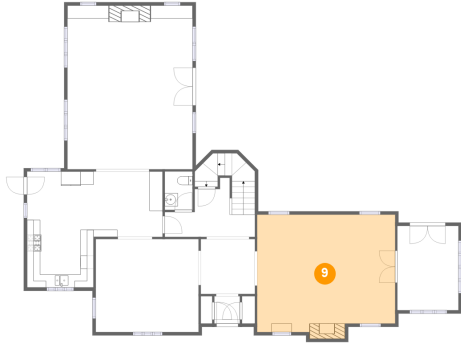


Dimensions: 15'7" x 14'1"
Area: 220 sq. ft
Counted as living area: Yes

Heated: Yes
Finished: Yes
Enclosed: Yes
Contiguous: Yes
Permitted: Yes
Wet space: No
Addition: No
Conversion: No

3245 Brightwood Place Southwest, South Roanoke, Roanoke, Roanoke, Virginia, United

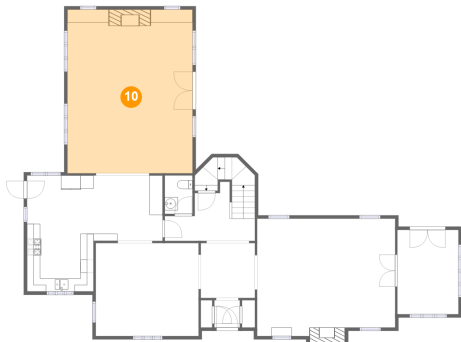
9 Floor 2 - Living Room



Dimensions: 21'0" x 17'9"
Area: 369 sq. ft
Counted as living area: Yes

Heated: Yes
Finished: Yes
Enclosed: Yes
Contiguous: Yes
Permitted: Yes
Wet space: No
Addition: No
Conversion: No

10 Floor 2 - Living Room



Dimensions: 19'0" x 24'10"
Area: 472 sq. ft
Counted as living area: Yes

Heated: Yes
Finished: Yes
Enclosed: Yes
Contiguous: Yes
Permitted: Yes
Wet space: No
Addition: No
Conversion: No

11 Floor 2 - Bath



Dimensions: 4'2" x 5'10"
Area: 25 sq. ft
Counted as living area: Yes

Heated: Yes
Finished: Yes
Enclosed: Yes
Contiguous: Yes
Permitted: Yes
Wet space: Yes
Addition: No
Conversion: No

3245 Brightwood Place Southwest, South Roanoke, Roanoke, Roanoke, Virginia, United

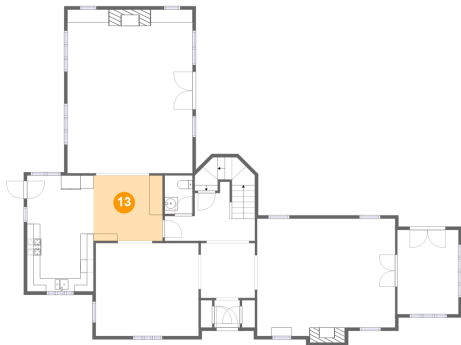
12 Floor 2 - Room



Dimensions: 9'3" x 12'9"
Area: 119 sq. ft
Counted as living area: Yes

Heated: Yes
Finished: Yes
Enclosed: Yes
Contiguous: Yes
Permitted: Yes
Wet space: No
Addition: No
Conversion: No

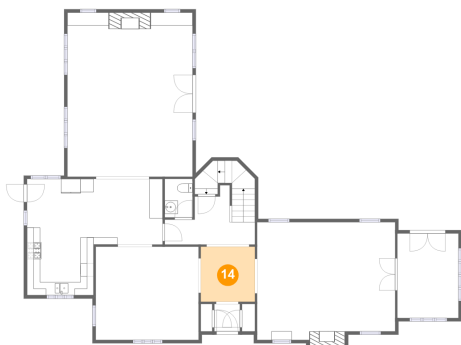
13 Floor 2 - Nook



Dimensions: 10'6" x 9'11"
Area: 104 sq. ft
Counted as living area: Yes

Heated: Yes
Finished: Yes
Enclosed: Yes
Contiguous: Yes
Permitted: Yes
Wet space: No
Addition: No
Conversion: No

14 Floor 2 - Hall

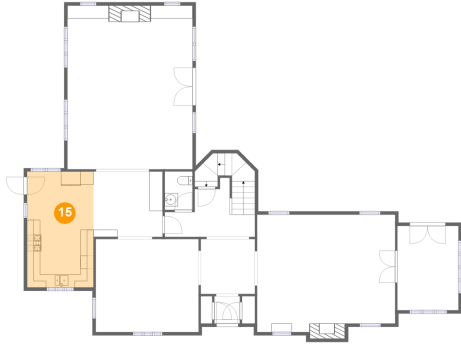


Dimensions: 8'3" x 8'4"
Area: 68 sq. ft
Counted as living area: Yes

Heated: Yes
Finished: Yes
Enclosed: Yes
Contiguous: Yes
Permitted: Yes
Wet space: No
Addition: No
Conversion: No

3245 Brightwood Place Southwest, South Roanoke, Roanoke, Roanoke, Virginia, United

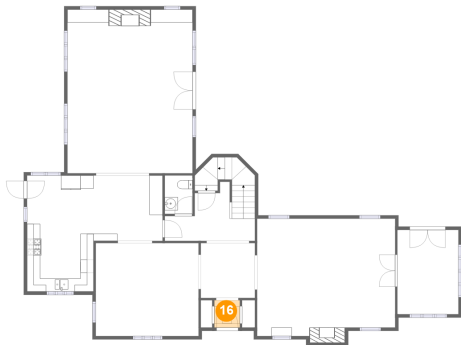
15 Floor 2 - Kitchen



Dimensions: 10'1" x 17'7"
Area: 178 sq. ft
Counted as living area: Yes

Heated: Yes
Finished: Yes
Enclosed: Yes
Contiguous: Yes
Permitted: Yes
Wet space: No
Addition: No
Conversion: No

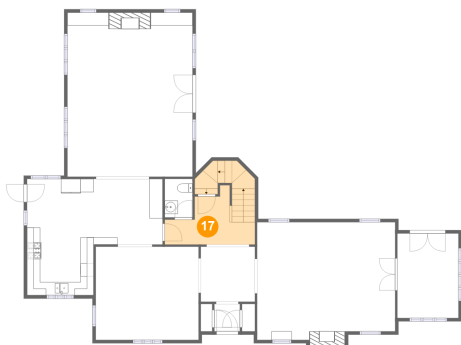
16 Floor 2 - Entry



Dimensions: 3'10" x 4'1"
Area: 16 sq. ft
Counted as living area: Yes

Heated: Yes
Finished: Yes
Enclosed: Yes
Contiguous: Yes
Permitted: Yes
Wet space: No
Addition: No
Conversion: No

17 Floor 2 - Hall

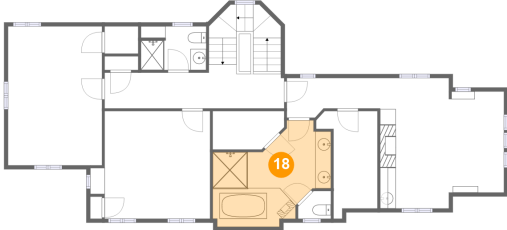


Dimensions: 13'8" x 12'8"
Area: 122 sq. ft
Counted as living area: Yes

Heated: Yes
Finished: Yes
Enclosed: Yes
Contiguous: Yes
Permitted: Yes
Wet space: No
Addition: No
Conversion: No

3245 Brightwood Place Southwest, South Roanoke, Roanoke, Roanoke, Virginia, United

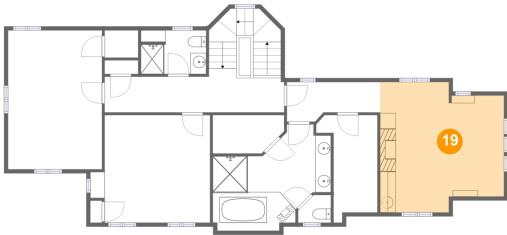
18 Floor 3 - Bath



Dimensions: 15'0" x 11'2"
Area: 144 sq. ft
Counted as living area: Yes

Heated: Yes
Finished: Yes
Enclosed: Yes
Contiguous: Yes
Permitted: Yes
Wet space: Yes
Addition: No
Conversion: No

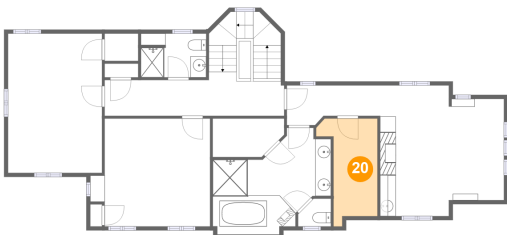
19 Floor 3 - Bedroom



Dimensions: 15'8" x 16'6"
Area: 233 sq. ft
Counted as living area: Yes

Heated: Yes
Finished: Yes
Enclosed: Yes
Contiguous: Yes
Permitted: Yes
Wet space: No
Addition: No
Conversion: No

20 Floor 3 - Cl

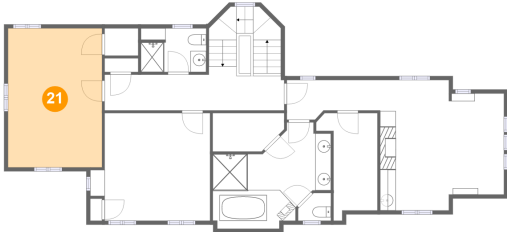


Dimensions: 7'9" x 12'3"
Area: 74 sq. ft
Counted as living area: Yes

Heated: Yes
Finished: Yes
Enclosed: Yes
Contiguous: Yes
Permitted: Yes
Wet space: No
Addition: No
Conversion: No

3245 Brightwood Place Southwest, South Roanoke, Roanoke, Roanoke, Virginia, United

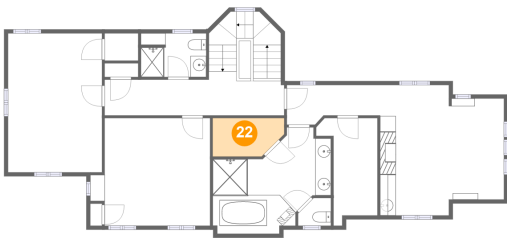
21 Floor 3 - Bedroom



Dimensions: 11'11" x 17'7"
Area: 210 sq. ft
Counted as living area: Yes

Heated: Yes
Finished: Yes
Enclosed: Yes
Contiguous: Yes
Permitted: Yes
Wet space: No
Addition: No
Conversion: No

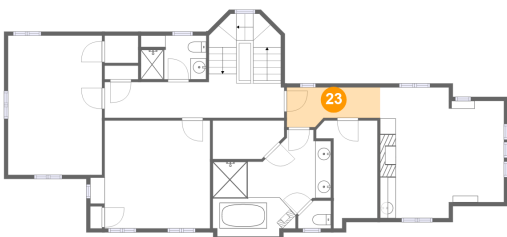
22 Floor 3 - Cl



Dimensions: 9'1" x 4'10"
Area: 40 sq. ft
Counted as living area: Yes

Heated: Yes
Finished: Yes
Enclosed: Yes
Contiguous: Yes
Permitted: Yes
Wet space: No
Addition: No
Conversion: No

23 Floor 3 - Hall

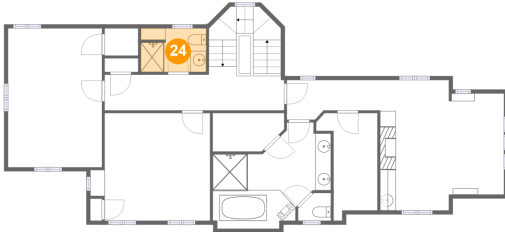


Dimensions: 11'10" x 5'0"
Area: 51 sq. ft
Counted as living area: Yes

Heated: Yes
Finished: Yes
Enclosed: Yes
Contiguous: Yes
Permitted: Yes
Wet space: No
Addition: No
Conversion: No

3245 Brightwood Place Southwest, South Roanoke, Roanoke, Roanoke, Virginia, United

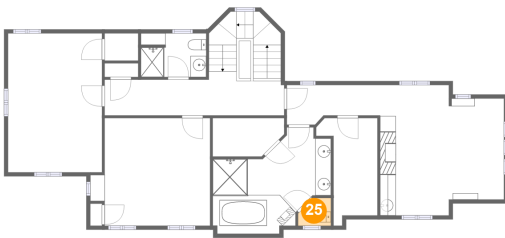
24 Floor 3 - Bath



Dimensions: 8'4" x 5'6"
Area: 45 sq. ft
Counted as living area: Yes

Heated: Yes
Finished: Yes
Enclosed: Yes
Contiguous: Yes
Permitted: Yes
Wet space: Yes
Addition: No
Conversion: No

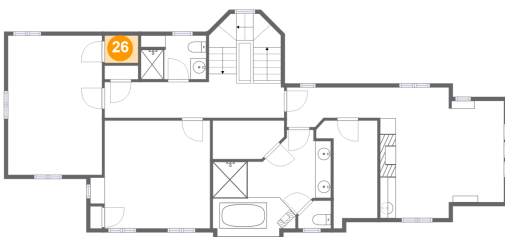
25 Floor 3 - Bath



Dimensions: 4'1" x 3'6"
Area: 13 sq. ft
Counted as living area: Yes

Heated: Yes
Finished: Yes
Enclosed: Yes
Contiguous: Yes
Permitted: Yes
Wet space: Yes
Addition: No
Conversion: No

26 Floor 3 - Cl

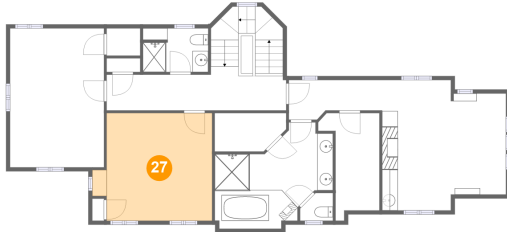


Dimensions: 4'3" x 3'6"
Area: 15 sq. ft
Counted as living area: Yes

Heated: Yes
Finished: Yes
Enclosed: Yes
Contiguous: Yes
Permitted: Yes
Wet space: No
Addition: No
Conversion: No

3245 Brightwood Place Southwest, South Roanoke, Roanoke, Roanoke, Virginia, United

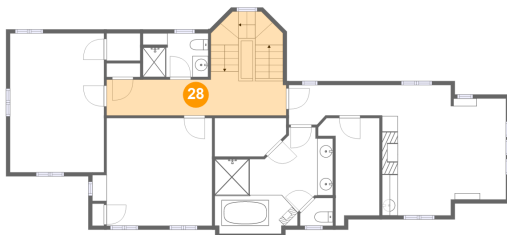
27 Floor 3 - Bedroom



Dimensions: 15'2" x 13'8"
Area: 188 sq. ft
Counted as living area: Yes

Heated: Yes
Finished: Yes
Enclosed: Yes
Contiguous: Yes
Permitted: Yes
Wet space: No
Addition: No
Conversion: No

28 Floor 3 - Hall



Dimensions: 22'9" x 5'7"
Area: 174 sq. ft
Counted as living area: Yes

Heated: Yes
Finished: Yes
Enclosed: Yes
Contiguous: Yes
Permitted: Yes
Wet space: No
Addition: No
Conversion: No