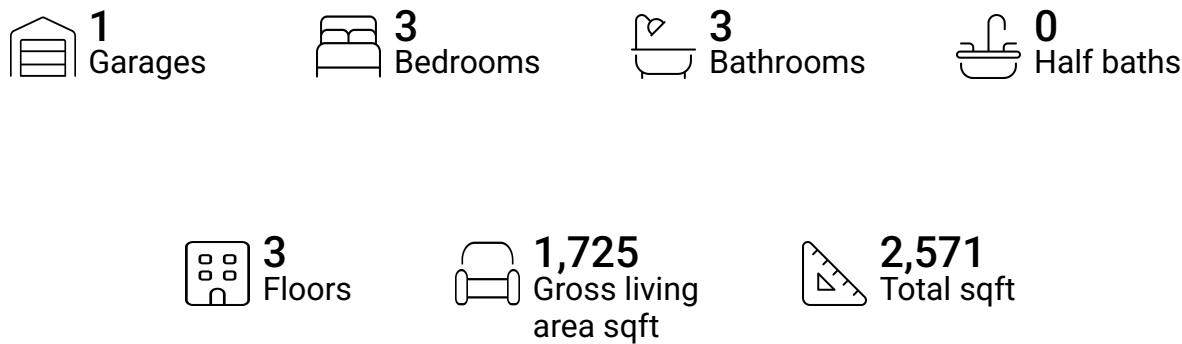


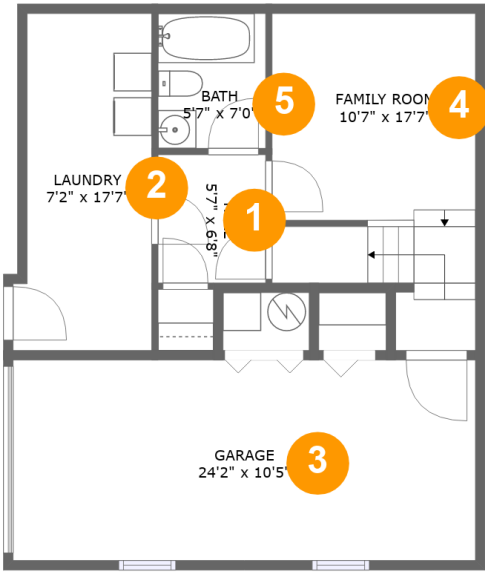
5414 Grandin Road, Sugar Loaf Highlands, Roanoke,
Roanoke County, Virginia, United States, 24018



Property summary



5414 Grandin Road, Sugar Loaf Highlands, Roanoke,
Roanoke County, Virginia, United States, 24018



Room dimensions

Floor 1

Total sqft: 733 Living area: 427

#		Dimensions	sqft	Counted as living area
1	Hall	5'7" x 6'8"	38 sq. ft	Yes
2	Laundry	7'2" x 17'7"	117 sq. ft	Yes
3	Garage	24'2" x 10'5"	252 sq. ft	No
4	Family Room	10'7" x 17'7"	162 sq. ft	Yes
5	Bath	5'7" x 7'0"	39 sq. ft	Yes

5414 Grandin Road, Sugar Loaf Highlands, Roanoke, Roanoke County, Virginia, United States, 24018



Room dimensions

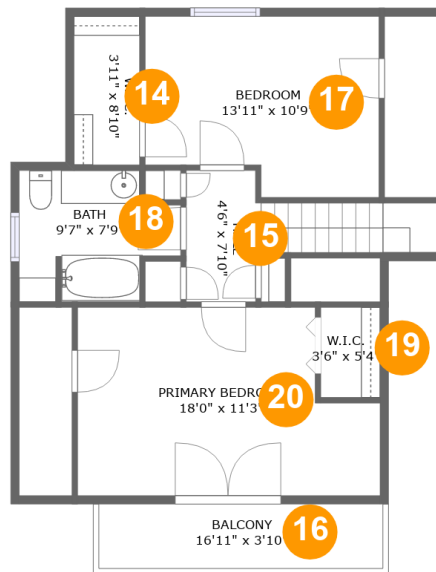
Floor 2

Total sqft: 1088

Living area: 779

#		Dimensions	sqft	Counted as living area
6	Hall	5'1" x 6'7"	27 sq. ft	Yes
7	Dining Area	7'10" x 11'1"	87 sq. ft	Yes
8	Bedroom	11'7" x 10'9"	125 sq. ft	Yes
9	Kitchen	7'6" x 17'5"	131 sq. ft	Yes
10	Bath	5'1" x 7'2"	36 sq. ft	Yes
11	Patio	9'6" x 7'8"	73 sq. ft	No
12	Porch	20'0" x 9'8"	236 sq. ft	No
13	Living Room	17'1" x 17'5"	283 sq. ft	Yes

**5414 Grandin Road, Sugar Loaf Highlands, Roanoke,
Roanoke County, Virginia, United States, 24018**



Room dimensions

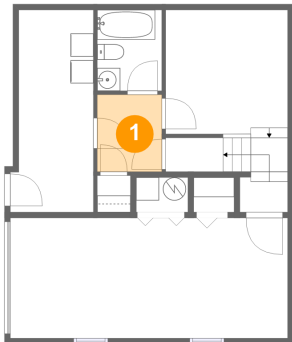
Floor 3

Total sqft: 750 Living area: 519

#		Dimensions	sqft	Counted as living area
14	W.I.C.	3'11" x 8'10"	35 sq. ft	No
15	Hall	4'6" x 7'10"	64 sq. ft	Yes
16	Balcony	16'11" x 3'10"	65 sq. ft	No
17	Bedroom	13'11" x 10'9"	137 sq. ft	Yes
18	Bath	9'7" x 7'9"	63 sq. ft	Yes
19	W.I.C.	3'6" x 5'4"	12 sq. ft	Yes
20	Primary Bedroom	18'0" x 11'3"	157 sq. ft	Yes

5414 Grandin Road, Sugar Loaf Highlands, Roanoke,
Roanoke County, Virginia, United States, 24018

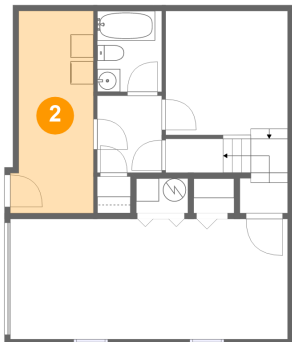
1 Floor 1 - Hall



Dimensions: 5'7" x 6'8"
Area: 38 sq. ft
Counted as living area: Yes

Heated: Yes
Finished: Yes
Enclosed: Yes
Contiguous: Yes
Permitted: Yes
Wet space: No
Addition: No
Conversion: No

2 Floor 1 - Laundry

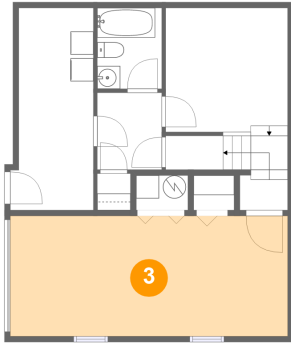


Dimensions: 7'2" x 17'7"
Area: 117 sq. ft
Counted as living area: Yes

Heated: Yes
Finished: Yes
Enclosed: Yes
Contiguous: Yes
Permitted: Yes
Wet space: No
Addition: No
Conversion: No

5414 Grandin Road, Sugar Loaf Highlands, Roanoke,
Roanoke County, Virginia, United States, 24018

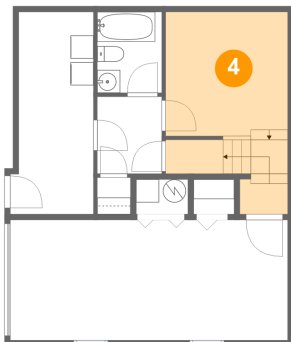
3 Floor 1 - Garage



Dimensions: 24'2" x 10'5"
Area: 252 sq. ft
Counted as living area: No

Heated: No
Finished: No
Enclosed: Yes
Contiguous: Yes
Permitted: Yes
Wet space: No
Addition: No
Conversion: No

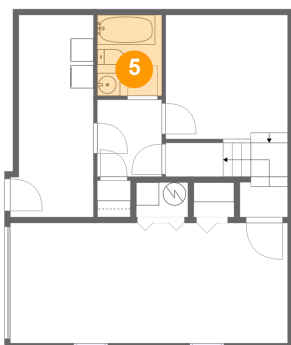
4 Floor 1 - Family Room



Dimensions: 10'7" x 17'7"
Area: 162 sq. ft
Counted as living area: Yes

Heated: Yes
Finished: Yes
Enclosed: Yes
Contiguous: Yes
Permitted: Yes
Wet space: No
Addition: No
Conversion: No

5 Floor 1 - Bath

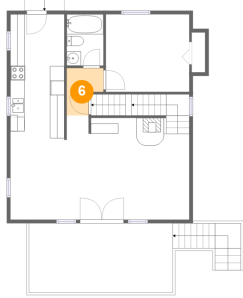


Dimensions: 5'7" x 7'0"
Area: 39 sq. ft
Counted as living area: Yes

Heated: Yes
Finished: Yes
Enclosed: Yes
Contiguous: Yes
Permitted: Yes
Wet space: Yes
Addition: No
Conversion: No

**5414 Grandin Road, Sugar Loaf Highlands, Roanoke,
Roanoke County, Virginia, United States, 24018**

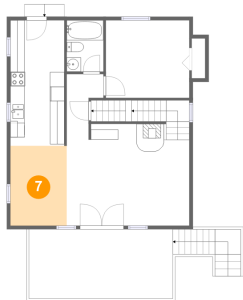
6 Floor 2 - Hall



Dimensions: 5'1" x 6'7"
Area: 27 sq. ft
Counted as living area: Yes

Heated: Yes
Finished: Yes
Enclosed: Yes
Contiguous: Yes
Permitted: Yes
Wet space: No
Addition: No
Conversion: No

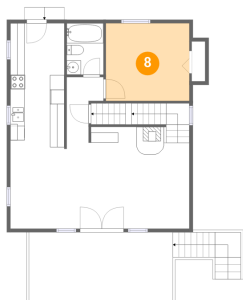
7 Floor 2 - Dining Area



Dimensions: 7'10" x 11'1"
Area: 87 sq. ft
Counted as living area: Yes

Heated: Yes
Finished: Yes
Enclosed: Yes
Contiguous: Yes
Permitted: Yes
Wet space: No
Addition: No
Conversion: No

8 Floor 2 - Bedroom

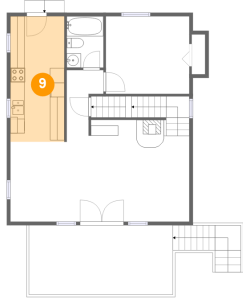


Dimensions: 11'7" x 10'9"
Area: 125 sq. ft
Counted as living area: Yes

Heated: Yes
Finished: Yes
Enclosed: Yes
Contiguous: Yes
Permitted: Yes
Wet space: No
Addition: No
Conversion: No

**5414 Grandin Road, Sugar Loaf Highlands, Roanoke,
Roanoke County, Virginia, United States, 24018**

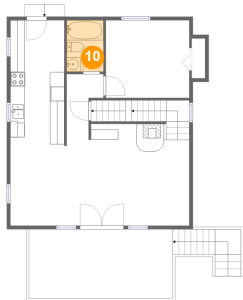
9 Floor 2 - Kitchen



Dimensions: 7'6" x 17'5"
Area: 131 sq. ft
Counted as living area: Yes

Heated: Yes
Finished: Yes
Enclosed: Yes
Contiguous: Yes
Permitted: Yes
Wet space: No
Addition: No
Conversion: No

10 Floor 2 - Bath



Dimensions: 5'1" x 7'2"
Area: 36 sq. ft
Counted as living area: Yes

Heated: Yes
Finished: Yes
Enclosed: Yes
Contiguous: Yes
Permitted: Yes
Wet space: Yes
Addition: No
Conversion: No

11 Floor 2 - Patio

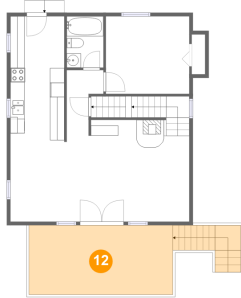


Dimensions: 9'6" x 7'8"
Area: 73 sq. ft
Counted as living area: No

Heated: No
Finished: Yes
Enclosed: No
Contiguous: Yes
Permitted: Yes
Wet space: No
Addition: No
Conversion: No

**5414 Grandin Road, Sugar Loaf Highlands, Roanoke,
Roanoke County, Virginia, United States, 24018**

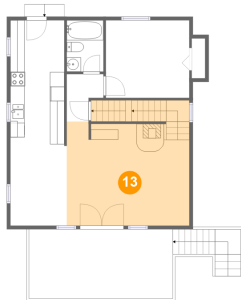
12 Floor 2 - Porch



Dimensions: 20'0" x 9'8"
Area: 236 sq. ft
Counted as living area: No

Heated: No
Finished: Yes
Enclosed: No
Contiguous: Yes
Permitted: Yes
Wet space: No
Addition: No
Conversion: No

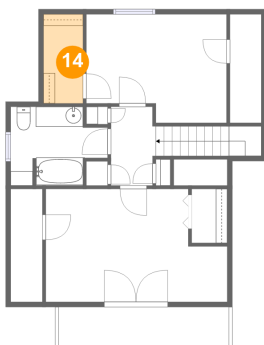
13 Floor 2 - Living Room



Dimensions: 17'1" x 17'5"
Area: 283 sq. ft
Counted as living area: Yes

Heated: Yes
Finished: Yes
Enclosed: Yes
Contiguous: Yes
Permitted: Yes
Wet space: No
Addition: No
Conversion: No

14 Floor 3 - W.I.C.

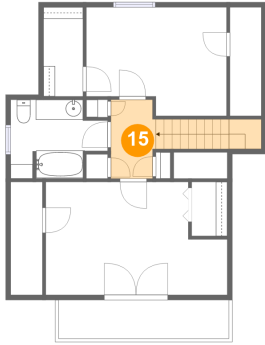


Dimensions: 3'11" x 8'10"
Area: 35 sq. ft
Counted as living area: No

Heated: Yes
Finished: Yes
Enclosed: Yes
Contiguous: Yes
Permitted: Yes
Wet space: No
Addition: No
Conversion: No

**5414 Grandin Road, Sugar Loaf Highlands, Roanoke,
Roanoke County, Virginia, United States, 24018**

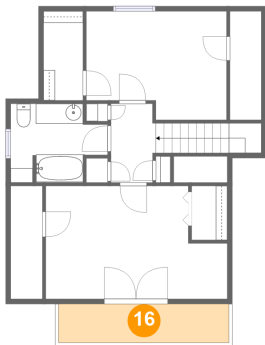
15 Floor 3 - Hall



Dimensions: 4'6" x 7'10"
Area: 64 sq. ft
Counted as living area: Yes

Heated: Yes
Finished: Yes
Enclosed: Yes
Contiguous: Yes
Permitted: Yes
Wet space: No
Addition: No
Conversion: No

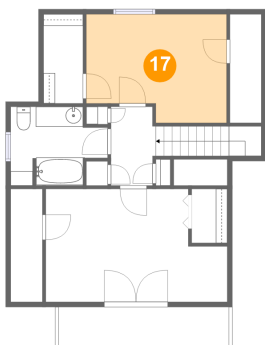
16 Floor 3 - Balcony



Dimensions: 16'11" x 3'10"
Area: 65 sq. ft
Counted as living area: No

Heated: No
Finished: Yes
Enclosed: No
Contiguous: Yes
Permitted: Yes
Wet space: No
Addition: No
Conversion: No

17 Floor 3 - Bedroom

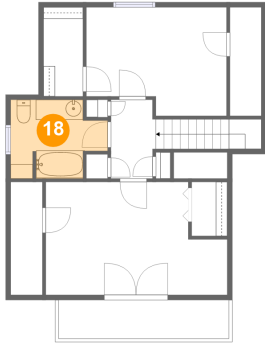


Dimensions: 13'11" x 10'9"
Area: 137 sq. ft
Counted as living area: Yes

Heated: Yes
Finished: Yes
Enclosed: Yes
Contiguous: Yes
Permitted: Yes
Wet space: No
Addition: No
Conversion: No

5414 Grandin Road, Sugar Loaf Highlands, Roanoke,
Roanoke County, Virginia, United States, 24018

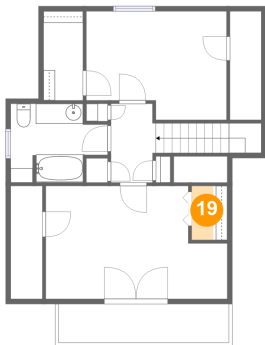
18 Floor 3 - Bath



Dimensions: 9'7" x 7'9"
Area: 63 sq. ft
Counted as living area: Yes

Heated: Yes
Finished: Yes
Enclosed: Yes
Contiguous: Yes
Permitted: Yes
Wet space: Yes
Addition: No
Conversion: No

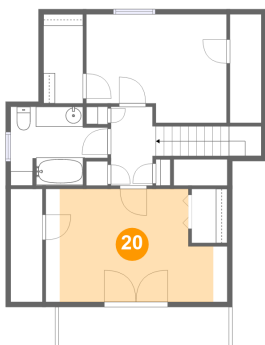
19 Floor 3 - W.I.C.



Dimensions: 3'6" x 5'4"
Area: 12 sq. ft
Counted as living area: Yes

Heated: Yes
Finished: Yes
Enclosed: Yes
Contiguous: Yes
Permitted: Yes
Wet space: No
Addition: No
Conversion: No

20 Floor 3 - Primary Bedroom



Dimensions: 18'0" x 11'3"
Area: 157 sq. ft
Counted as living area: Yes

Heated: Yes
Finished: Yes
Enclosed: Yes
Contiguous: Yes
Permitted: Yes
Wet space: No
Addition: No
Conversion: No