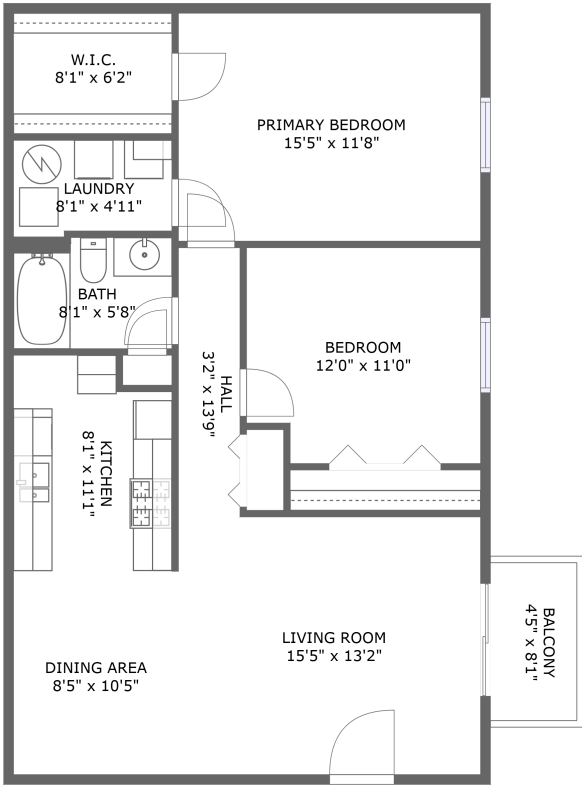


Home report

34 John Street, Bloomfield, Essex County, New Jersey, United States, 07003



FLOOR 1


Total Area: 930 sq. ft

Floor 1: 930 sq. ft

Excluded: Balcony 36 sq. ft, Walls: 64 sq. ft

Property summary

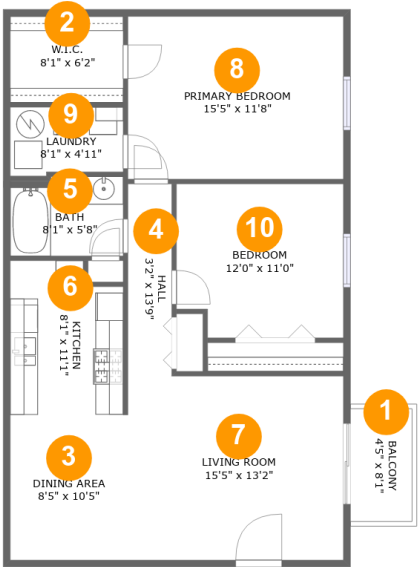
 **1** Floors

 **2** Bedrooms

 **1** Bathrooms

Home report

34 John Street, Bloomfield, Essex County, New Jersey, United States, 07003



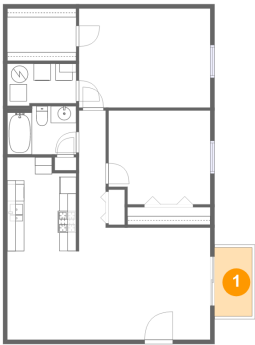
Room dimensions

Floor 1 Total:930sqft Excluded: 36sqft

#		Max Dimensions	sqft	Included
1	Balcony	4'5" x 8'1"	36 sq. ft	No
2	W.I.C.	8'1" x 6'2"	50 sq. ft	Yes
3	Dining Area	8'5" x 10'5"	88 sq. ft	Yes
4	Hall	3'2" x 13'9"	43 sq. ft	Yes
5	Bath	8'1" x 5'8"	45 sq. ft	Yes
6	Kitchen	8'1" x 11'1"	84 sq. ft	Yes
7	Living Room	15'5" x 13'2"	204 sq. ft	Yes
8	Primary Bedroom	15'5" x 11'8"	180 sq. ft	Yes
9	Laundry	8'1" x 4'11"	38 sq. ft	Yes
10	Bedroom	12'0" x 11'0"	128 sq. ft	Yes

34 John Street, Bloomfield, Essex County, New Jersey, United States, 07003

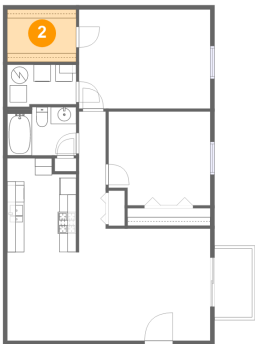
1 Floor 1 - Balcony



Max Dimensions: 4'5" x 8'1"
Calculated Area: 36 sq. ft
Included: No

Heated: No
Finished: Yes
Enclosed: No
Contiguous: Yes
Permitted: Yes
Wet space: No
Addition: No
Conversion: No

2 Floor 1 - W.I.C.

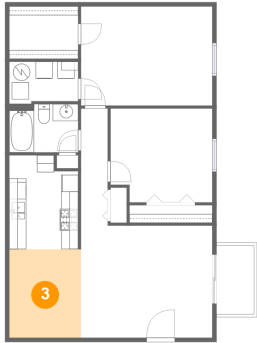


Max Dimensions: 8'1" x 6'2"
Calculated Area: 50 sq. ft
Included: Yes

Heated: Yes
Finished: Yes
Enclosed: Yes
Contiguous: Yes
Permitted: Yes
Wet space: No
Addition: No
Conversion: No

34 John Street, Bloomfield, Essex County, New Jersey, United States, 07003

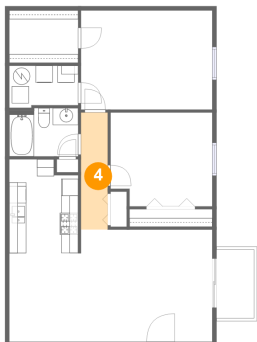
3 Floor 1 - Dining Area



Max Dimensions: 8'5" x 10'5"
Calculated Area: 88 sq. ft
Included: Yes

Heated: Yes
Finished: Yes
Enclosed: Yes
Contiguous: Yes
Permitted: Yes
Wet space: No
Addition: No
Conversion: No

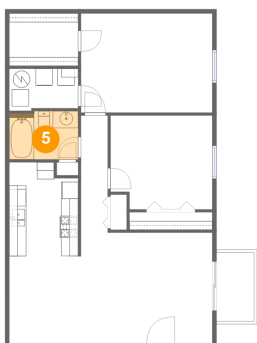
4 Floor 1 - Hall



Max Dimensions: 3'2" x 13'9"
Calculated Area: 43 sq. ft
Included: Yes

Heated: Yes
Finished: Yes
Enclosed: Yes
Contiguous: Yes
Permitted: Yes
Wet space: No
Addition: No
Conversion: No

5 Floor 1 - Bath

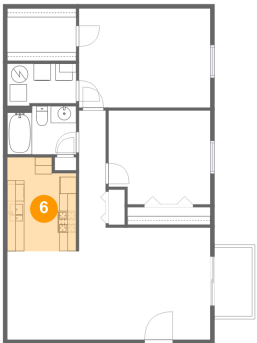


Max Dimensions: 8'1" x 5'8"
Calculated Area: 45 sq. ft
Included: Yes

Heated: Yes
Finished: Yes
Enclosed: Yes
Contiguous: Yes
Permitted: Yes
Wet space: Yes
Addition: No
Conversion: No

34 John Street, Bloomfield, Essex County, New Jersey, United States, 07003

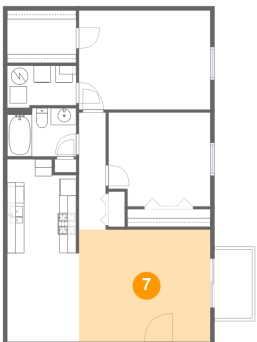
6 Floor 1 - Kitchen



Max Dimensions: 8'1" x 11'1"
Calculated Area: 84 sq. ft
Included: Yes

Heated: Yes
Finished: Yes
Enclosed: Yes
Contiguous: Yes
Permitted: Yes
Wet space: No
Addition: No
Conversion: No

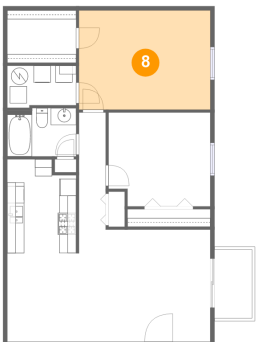
7 Floor 1 - Living Room



Max Dimensions: 15'5" x 13'2"
Calculated Area: 204 sq. ft
Included: Yes

Heated: Yes
Finished: Yes
Enclosed: Yes
Contiguous: Yes
Permitted: Yes
Wet space: No
Addition: No
Conversion: No

8 Floor 1 - Primary Bedroom

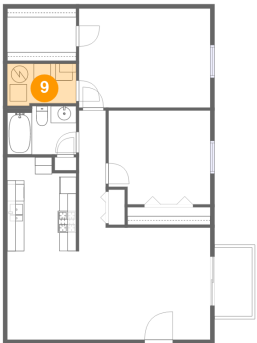


Max Dimensions: 15'5" x 11'8"
Calculated Area: 180 sq. ft
Included: Yes

Heated: Yes
Finished: Yes
Enclosed: Yes
Contiguous: Yes
Permitted: Yes
Wet space: No
Addition: No
Conversion: No

34 John Street, Bloomfield, Essex County, New Jersey, United States, 07003

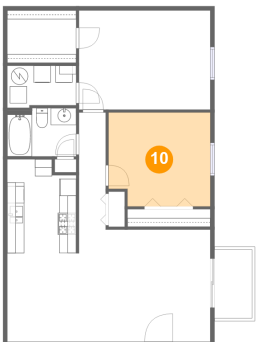
9 Floor 1 - Laundry



Max Dimensions: 8'1" x 4'11"
Calculated Area: 38 sq. ft
Included: Yes

Heated: Yes
Finished: Yes
Enclosed: Yes
Contiguous: Yes
Permitted: Yes
Wet space: No
Addition: No
Conversion: No

10 Floor 1 - Bedroom



Max Dimensions: 12'0" x 11'0"
Calculated Area: 128 sq. ft
Included: Yes

Heated: Yes
Finished: Yes
Enclosed: Yes
Contiguous: Yes
Permitted: Yes
Wet space: No
Addition: No
Conversion: No