

Home report

253 Island Green Drive, Penhook, Franklin County, Virginia,
United States, 24137




Total Area: 3462 sq. ft

Floor 1: 1472 sq. ft, Floor 2: 1713 sq. ft, Floor 3: 277 sq. ft

Excluded: Storage 85 sq. ft, Utility 54 sq. ft, Covered patio 300 sq. ft, Garage 468 sq. ft, Screened porch 135 sq. ft, Porch 30 sq. ft, Deck 170 sq. ft, Open to below 141 sq. ft, Walls: 292 sq. ft

Property summary

 **3** Floors

 **4** Bedrooms

 **3** Bathrooms

Home report

**253 Island Green Drive, Penhook, Franklin County, Virginia,
United States, 24137**



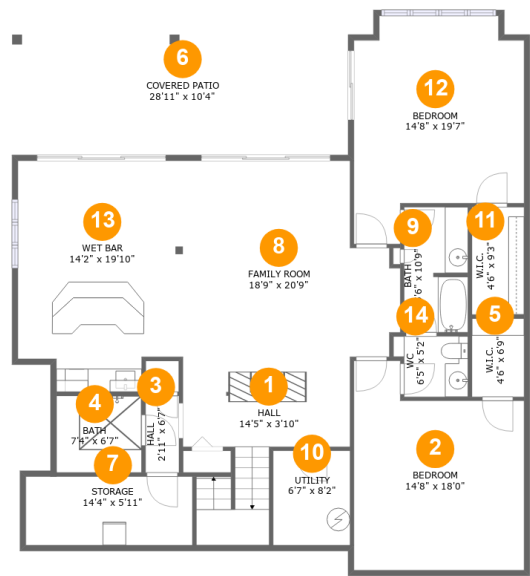
1
Half baths



1
Garages

Home report

253 Island Green Drive, Penhook, Franklin County, Virginia,
United States, 24137



Room dimensions

Floor 1 Total:1472sqft Excluded: 439sqft

#		Max Dimensions	sqft	Included
1	Hall	14'5" x 3'10"	100 sq. ft	Yes
2	Bedroom	14'8" x 18'0"	228 sq. ft	Yes
3	Hall	2'11" x 6'7"	19 sq. ft	Yes
4	Bath	7'4" x 6'7"	49 sq. ft	Yes
5	W.I.C.	4'6" x 6'9"	30 sq. ft	Yes
6	Covered Patio	28'11" x 10'4"	300 sq. ft	No
7	Storage	14'4" x 5'11"	85 sq. ft	No
8	Family Room	18'9" x 20'9"	336 sq. ft	Yes
9	Bath	5'6" x 10'9"	58 sq. ft	Yes
10	Utility	6'7" x 8'2"	54 sq. ft	No
11	W.I.C.	4'6" x 9'3"	42 sq. ft	Yes

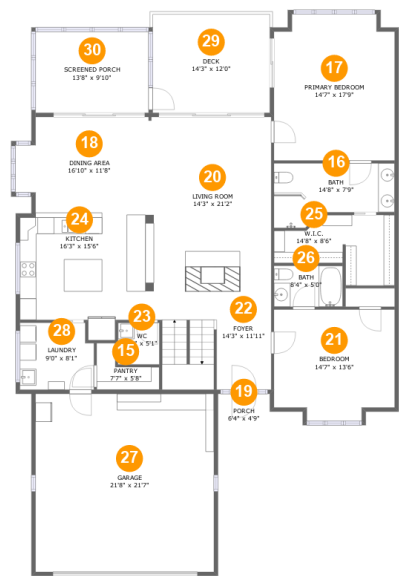
Home report

253 Island Green Drive, Penhook, Franklin County, Virginia,
United States, 24137

#		Max Dimensions	sqft	Included
12	Bedroom	14'8" x 19'7"	241 sq. ft	Yes
13	Wet Bar	14'2" x 19'10"	263 sq. ft	Yes
14	WC	6'5" x 5'2"	30 sq. ft	Yes

Home report

253 Island Green Drive, Penhook, Franklin County, Virginia,
United States, 24137



Room dimensions

Floor 2 Total:1713sqft Excluded: 803sqft

#		Max Dimensions	sqft	Included
15	Pantry	7'7" x 5'8"	27 sq. ft	Yes
16	Bath	14'8" x 7'9"	96 sq. ft	Yes
17	Primary Bedroom	14'7" x 17'9"	251 sq. ft	Yes
18	Dining Area	16'10" x 11'8"	181 sq. ft	Yes
19	Porch	6'4" x 4'9"	30 sq. ft	No
20	Living Room	14'3" x 21'2"	302 sq. ft	Yes
21	Bedroom	14'7" x 13'6"	185 sq. ft	Yes
22	Foyer	14'3" x 11'11"	159 sq. ft	Yes
23	WC	5'0" x 5'1"	25 sq. ft	Yes
24	Kitchen	16'3" x 15'6"	218 sq. ft	Yes
25	W.I.C.	14'8" x 8'6"	92 sq. ft	Yes

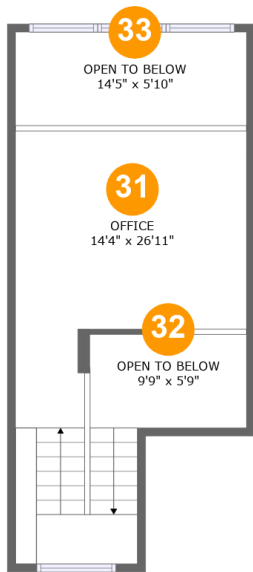
Home report

**253 Island Green Drive, Penhook, Franklin County, Virginia,
United States, 24137**

#		Max Dimensions	sqft	Included
26	Bath	8'4" x 5'0"	41 sq. ft	Yes
27	Garage	21'8" x 21'7"	468 sq. ft	No
28	Laundry	9'0" x 8'1"	71 sq. ft	Yes
29	Deck	14'3" x 12'0"	170 sq. ft	No
30	Screened Porch	13'8" x 9'10"	135 sq. ft	No

Home report

253 Island Green Drive, Penhook, Franklin County, Virginia,
United States, 24137

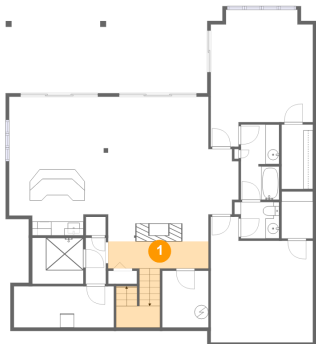


Room dimensions

Floor 3 Total:277sqft Excluded: 141sqft

#		Max Dimensions	sqft	Included
31	Office	14'4" x 26'11"	274 sq. ft	Yes
32	Open To Below	9'9" x 5'9"	57 sq. ft	No
33	Open To Below	14'5" x 5'10"	84 sq. ft	No

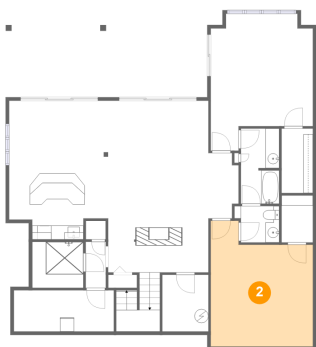
1 Floor 1 - Hall



Max Dimensions: 14'5" x 3'10"
Calculated Area: 100 sq. ft
Included: Yes

Heated: Yes
Finished: Yes
Enclosed: Yes
Contiguous: Yes
Permitted: Yes
Wet space: No
Addition: No
Conversion: No

2 Floor 1 - Bedroom

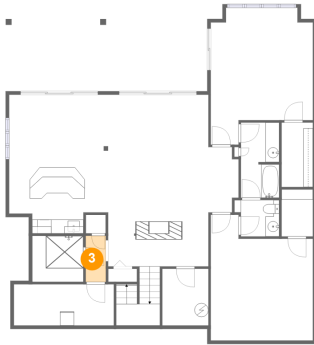


Max Dimensions: 14'8" x 18'0"
Calculated Area: 228 sq. ft
Included: Yes

Heated: Yes
Finished: Yes
Enclosed: Yes
Contiguous: Yes
Permitted: Yes
Wet space: No
Addition: No
Conversion: No

253 Island Green Drive, Penhook, Franklin County, Virginia,
United States, 24137

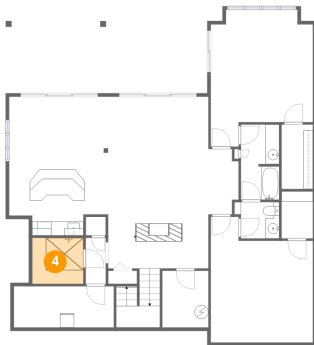
3 Floor 1 - Hall



Max Dimensions: 2'11" x 6'7"
Calculated Area: 19 sq. ft
Included: Yes

Heated: Yes
Finished: Yes
Enclosed: Yes
Contiguous: Yes
Permitted: Yes
Wet space: No
Addition: No
Conversion: No

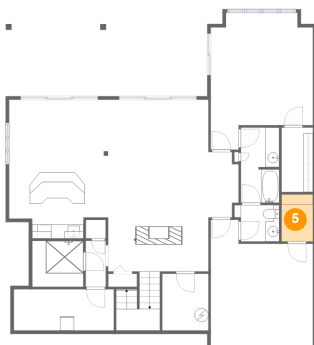
4 Floor 1 - Bath



Max Dimensions: 7'4" x 6'7"
Calculated Area: 49 sq. ft
Included: Yes

Heated: Yes
Finished: Yes
Enclosed: Yes
Contiguous: Yes
Permitted: Yes
Wet space: Yes
Addition: No
Conversion: No

5 Floor 1 - W.I.C.



Max Dimensions: 4'6" x 6'9"
Calculated Area: 30 sq. ft
Included: Yes

Heated: Yes
Finished: Yes
Enclosed: Yes
Contiguous: Yes
Permitted: Yes
Wet space: No
Addition: No
Conversion: No

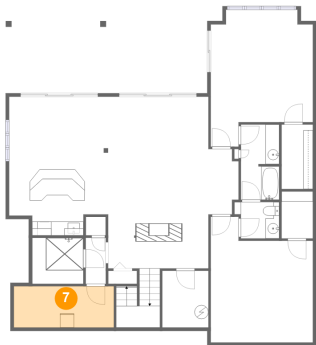
6 Floor 1 - Covered Patio



Max Dimensions: 28'11" x 10'4"
Calculated Area: 300 sq. ft
Included: No

Heated: No
Finished: Yes
Enclosed: No
Contiguous: Yes
Permitted: Yes
Wet space: No
Addition: No
Conversion: No

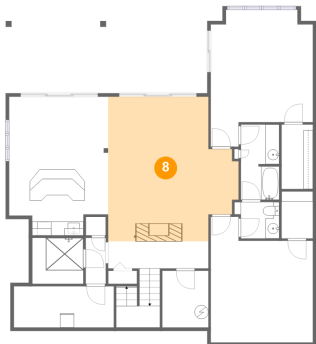
7 Floor 1 - Storage



Max Dimensions: 14'4" x 5'11"
Calculated Area: 85 sq. ft
Included: No

Heated: No
Finished: No
Enclosed: No
Contiguous: No
Permitted: Yes
Wet space: No
Addition: No
Conversion: No

8 Floor 1 - Family Room

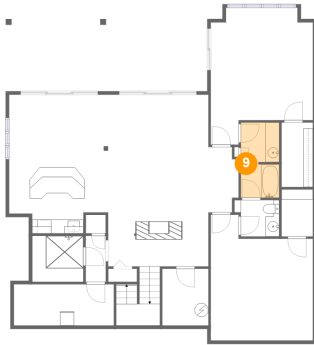


Max Dimensions: 18'9" x 20'9"
Calculated Area: 336 sq. ft
Included: Yes

Heated: Yes
Finished: Yes
Enclosed: Yes
Contiguous: Yes
Permitted: Yes
Wet space: No
Addition: No
Conversion: No

253 Island Green Drive, Penhook, Franklin County, Virginia,
United States, 24137

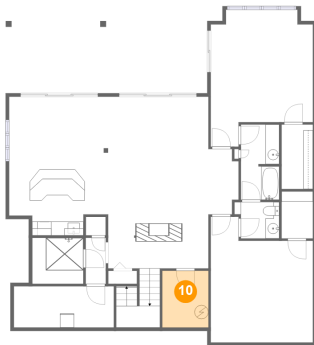
9 Floor 1 - Bath



Max Dimensions: 5'6" x 10'9"
Calculated Area: 58 sq. ft
Included: Yes

Heated: Yes
Finished: Yes
Enclosed: Yes
Contiguous: Yes
Permitted: Yes
Wet space: Yes
Addition: No
Conversion: No

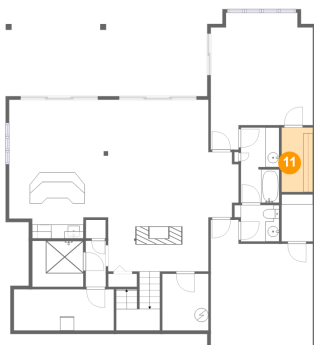
10 Floor 1 - Utility



Max Dimensions: 6'7" x 8'2"
Calculated Area: 54 sq. ft
Included: No

Heated: Yes
Finished: No
Enclosed: Yes
Contiguous: Yes
Permitted: Yes
Wet space: No
Addition: No
Conversion: No

11 Floor 1 - W.I.C.

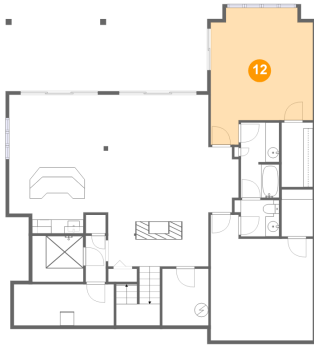


Max Dimensions: 4'6" x 9'3"
Calculated Area: 42 sq. ft
Included: Yes

Heated: Yes
Finished: Yes
Enclosed: Yes
Contiguous: Yes
Permitted: Yes
Wet space: No
Addition: No
Conversion: No

253 Island Green Drive, Penhook, Franklin County, Virginia,
United States, 24137

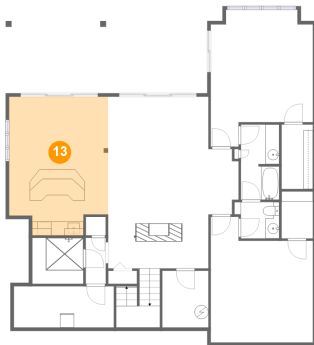
12 Floor 1 - Bedroom



Max Dimensions: 14'8" x 19'7"
Calculated Area: 241 sq. ft
Included: Yes

Heated: Yes
Finished: Yes
Enclosed: Yes
Contiguous: Yes
Permitted: Yes
Wet space: No
Addition: No
Conversion: No

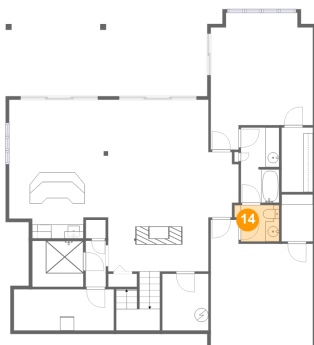
13 Floor 1 - Wet Bar



Max Dimensions: 14'2" x 19'10"
Calculated Area: 263 sq. ft
Included: Yes

Heated: Yes
Finished: Yes
Enclosed: Yes
Contiguous: Yes
Permitted: Yes
Wet space: No
Addition: No
Conversion: No

14 Floor 1 - WC



Max Dimensions: 6'5" x 5'2"
Calculated Area: 30 sq. ft
Included: Yes

Heated: Yes
Finished: Yes
Enclosed: Yes
Contiguous: Yes
Permitted: Yes
Wet space: Yes
Addition: No
Conversion: No

15 Floor 2 - Pantry



Max Dimensions: 7'7" x 5'8"
Calculated Area: 27 sq. ft
Included: Yes

Heated: Yes
Finished: Yes
Enclosed: Yes
Contiguous: Yes
Permitted: Yes
Wet space: No
Addition: No
Conversion: No

16 Floor 2 - Bath



Max Dimensions: 14'8" x 7'9"
Calculated Area: 96 sq. ft
Included: Yes

Heated: Yes
Finished: Yes
Enclosed: Yes
Contiguous: Yes
Permitted: Yes
Wet space: Yes
Addition: No
Conversion: No

17 Floor 2 - Primary Bedroom



Max Dimensions: 14'7" x 17'9"
Calculated Area: 251 sq. ft
Included: Yes

Heated: Yes
Finished: Yes
Enclosed: Yes
Contiguous: Yes
Permitted: Yes
Wet space: No
Addition: No
Conversion: No

18 Floor 2 - Dining Area



Max Dimensions: 16'10" x 11'8"
Calculated Area: 181 sq. ft
Included: Yes

Heated: Yes
Finished: Yes
Enclosed: Yes
Contiguous: Yes
Permitted: Yes
Wet space: No
Addition: No
Conversion: No

19 Floor 2 - Porch



Max Dimensions: 6'4" x 4'9"
Calculated Area: 30 sq. ft
Included: No

Heated: No
Finished: Yes
Enclosed: No
Contiguous: Yes
Permitted: Yes
Wet space: No
Addition: No
Conversion: No

20 Floor 2 - Living Room



Max Dimensions: 14'3" x 21'2"
Calculated Area: 302 sq. ft
Included: Yes

Heated: Yes
Finished: Yes
Enclosed: Yes
Contiguous: Yes
Permitted: Yes
Wet space: No
Addition: No
Conversion: No

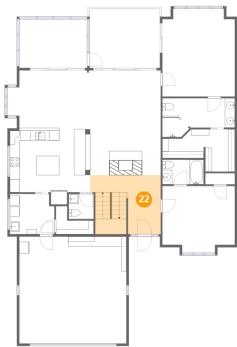
21 Floor 2 - Bedroom



Max Dimensions: 14'7" x 13'6"
Calculated Area: 185 sq. ft
Included: Yes

Heated: Yes
Finished: Yes
Enclosed: Yes
Contiguous: Yes
Permitted: Yes
Wet space: No
Addition: No
Conversion: No

22 Floor 2 - Foyer



Max Dimensions: 14'3" x 11'11"
Calculated Area: 159 sq. ft
Included: Yes

Heated: Yes
Finished: Yes
Enclosed: Yes
Contiguous: Yes
Permitted: Yes
Wet space: No
Addition: No
Conversion: No

23 Floor 2 - WC



Max Dimensions: 5'0" x 5'1"
Calculated Area: 25 sq. ft
Included: Yes

Heated: Yes
Finished: Yes
Enclosed: Yes
Contiguous: Yes
Permitted: Yes
Wet space: Yes
Addition: No
Conversion: No

24 Floor 2 - Kitchen



Max Dimensions: 16'3" x 15'6"
Calculated Area: 218 sq. ft
Included: Yes

Heated: Yes
Finished: Yes
Enclosed: Yes
Contiguous: Yes
Permitted: Yes
Wet space: No
Addition: No
Conversion: No

25 Floor 2 - W.I.C.



Max Dimensions: 14'8" x 8'6"
Calculated Area: 92 sq. ft
Included: Yes

Heated: Yes
Finished: Yes
Enclosed: Yes
Contiguous: Yes
Permitted: Yes
Wet space: No
Addition: No
Conversion: No

26 Floor 2 - Bath



Max Dimensions: 8'4" x 5'0"
Calculated Area: 41 sq. ft
Included: Yes

Heated: Yes
Finished: Yes
Enclosed: Yes
Contiguous: Yes
Permitted: Yes
Wet space: Yes
Addition: No
Conversion: No

27 Floor 2 - Garage



Max Dimensions: 21'8" x 21'7"
Calculated Area: 468 sq. ft
Included: No

Heated: No
Finished: No
Enclosed: Yes
Contiguous: Yes
Permitted: Yes
Wet space: No
Addition: No
Conversion: No

28 Floor 2 - Laundry



Max Dimensions: 9'0" x 8'1"
Calculated Area: 71 sq. ft
Included: Yes

Heated: Yes
Finished: Yes
Enclosed: Yes
Contiguous: Yes
Permitted: Yes
Wet space: No
Addition: No
Conversion: No

29 Floor 2 - Deck



Max Dimensions: 14'3" x 12'0"
Calculated Area: 170 sq. ft
Included: No

Heated: No
Finished: Yes
Enclosed: No
Contiguous: Yes
Permitted: Yes
Wet space: No
Addition: No
Conversion: No

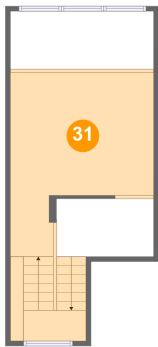
30 Floor 2 - Screened Porch



Max Dimensions: 13'8" x 9'10"
Calculated Area: 135 sq. ft
Included: No

Heated: No
Finished: Yes
Enclosed: No
Contiguous: Yes
Permitted: Yes
Wet space: No
Addition: No
Conversion: No

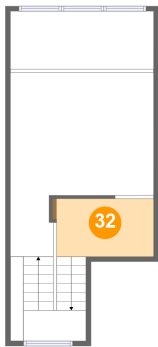
31 Floor 3 - Office



Max Dimensions: 14'4" x 26'11"
Calculated Area: 274 sq. ft
Included: Yes

Heated: Yes
Finished: Yes
Enclosed: Yes
Contiguous: Yes
Permitted: Yes
Wet space: No
Addition: No
Conversion: No

32 Floor 3 - Open To Below

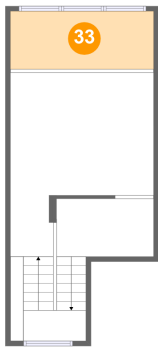


Max Dimensions: 9'9" x 5'9"
Calculated Area: 57 sq. ft
Included: No

Heated: No
Finished: No
Enclosed: No
Contiguous: Yes
Permitted: No
Wet space: No
Addition: No
Conversion: No

253 Island Green Drive, Penhook, Franklin County, Virginia,
United States, 24137

33 Floor 3 - Open To Below



Max Dimensions: 14'5" x 5'10"
Calculated Area: 84 sq. ft
Included: No

Heated: No
Finished: No
Enclosed: No
Contiguous: Yes
Permitted: No
Wet space: No
Addition: No
Conversion: No