

Home report

6013 Apple Harvest Drive, Roanoke, Roanoke County, Virginia,
United States, 24012



Total Area: 2412 sq. ft
Below Ground: 414 sq. ft, Floor 2: 1041 sq. ft, Floor 3: 957 sq. ft
Excluded: Garage 594 sq. ft, Covered deck 188 sq. ft, Patio 143 sq. ft, Porch 60 sq. ft, Fireplace 12 sq. ft, Walls: 225 sq. ft

Property summary

**3** Floors

**3** Bedrooms

**3** Bathrooms

Home report

**6013 Apple Harvest Drive, Roanoke, Roanoke County, Virginia,
United States, 24012**



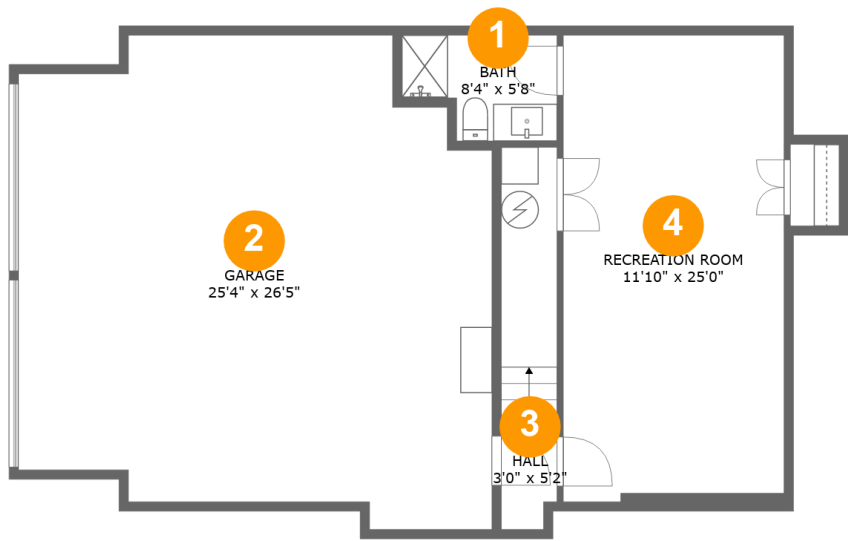
1
Half baths



1
Garages

Home report

6013 Apple Harvest Drive, Roanoke, Roanoke County, Virginia,
United States, 24012



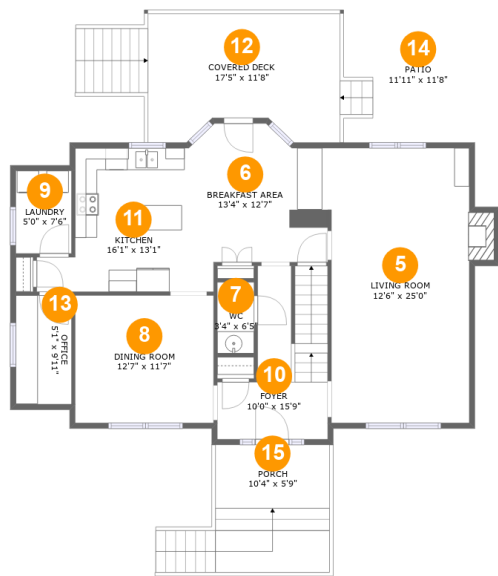
Room dimensions

Floor 1 Below ground Total:414sqft Excluded: 594sqft

#		Max Dimensions	sqft	Included
1	Bath	8'4" x 5'8"	40 sq. ft	Yes
2	Garage	25'4" x 26'5"	594 sq. ft	No
3	Hall	3'0" x 5'2"	60 sq. ft	Yes
4	Recreation Room	11'10" x 25'0"	291 sq. ft	Yes

Home report

6013 Apple Harvest Drive, Roanoke, Roanoke County, Virginia,
United States, 24012



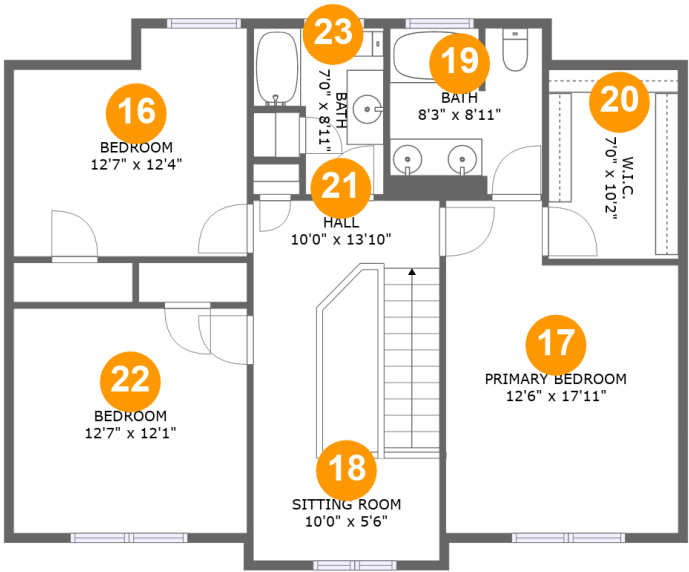
Room dimensions

Floor 2 Total:1041sqft Excluded: 403sqft

#		Max Dimensions	sqft	Included
5	Living Room	12'6" x 25'0"	323 sq. ft	Yes
6	Breakfast Area	13'4" x 12'7"	153 sq. ft	Yes
7	WC	3'4" x 6'5"	22 sq. ft	Yes
8	Dining Room	12'7" x 11'7"	146 sq. ft	Yes
9	Laundry	5'0" x 7'6"	38 sq. ft	Yes
10	Foyer	10'0" x 15'9"	117 sq. ft	Yes
11	Kitchen	16'1" x 13'1"	148 sq. ft	Yes
12	Covered Deck	17'5" x 11'8"	188 sq. ft	No
13	Office	5'1" x 9'11"	50 sq. ft	Yes
14	Patio	11'11" x 11'8"	143 sq. ft	No
15	Porch	10'4" x 5'9"	60 sq. ft	No

Home report

6013 Apple Harvest Drive, Roanoke, Roanoke County, Virginia,
United States, 24012



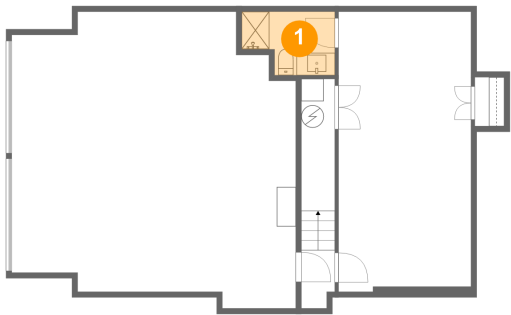
Room dimensions

Floor 3 Total:957sqft Excluded: 0sqft

#		Max Dimensions	sqft	Included
16	Bedroom	12'7" x 12'4"	139 sq. ft	Yes
17	Primary Bedroom	12'6" x 17'11"	199 sq. ft	Yes
18	Sitting Room	10'0" x 5'6"	55 sq. ft	Yes
19	Bath	8'3" x 8'11"	72 sq. ft	Yes
20	W.I.C.	7'0" x 10'2"	71 sq. ft	Yes
21	Hall	10'0" x 13'10"	139 sq. ft	Yes
22	Bedroom	12'7" x 12'1"	152 sq. ft	Yes
23	Bath	7'0" x 8'11"	49 sq. ft	Yes

6013 Apple Harvest Drive, Roanoke, Roanoke County, Virginia,
United States, 24012

1 Floor 1 - Bath



Max Dimensions: 8'4" x 5'8"
Calculated Area: 40 sq. ft
Included: Yes

Heated: Yes
Finished: Yes
Enclosed: Yes
Contiguous: Yes
Permitted: Yes
Wet space: Yes
Addition: No
Conversion: No

2 Floor 1 - Garage

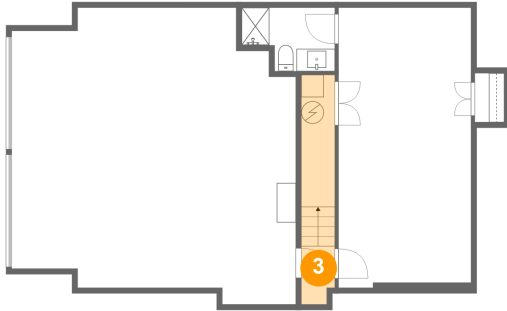


Max Dimensions: 25'4" x 26'5"
Calculated Area: 594 sq. ft
Included: No

Heated: No
Finished: No
Enclosed: Yes
Contiguous: Yes
Permitted: Yes
Wet space: No
Addition: No
Conversion: No

6013 Apple Harvest Drive, Roanoke, Roanoke County, Virginia,
United States, 24012

3 Floor 1 - Hall



Max Dimensions: 3'0" x 5'2"
Calculated Area: 60 sq. ft
Included: Yes

Heated: Yes
Finished: Yes
Enclosed: Yes
Contiguous: Yes
Permitted: Yes
Wet space: No
Addition: No
Conversion: No

4 Floor 1 - Recreation Room



Max Dimensions: 11'10" x 25'0"
Calculated Area: 291 sq. ft
Included: Yes

Heated: Yes
Finished: Yes
Enclosed: Yes
Contiguous: Yes
Permitted: Yes
Wet space: No
Addition: No
Conversion: No

5 Floor 2 - Living Room



Max Dimensions: 12'6" x 25'0"
Calculated Area: 323 sq. ft
Included: Yes

Heated: Yes
Finished: Yes
Enclosed: Yes
Contiguous: Yes
Permitted: Yes
Wet space: No
Addition: No
Conversion: No

6 Floor 2 - Breakfast Area



Max Dimensions: 13'4" x 12'7"
Calculated Area: 153 sq. ft
Included: Yes

Heated: Yes
Finished: Yes
Enclosed: Yes
Contiguous: Yes
Permitted: Yes
Wet space: No
Addition: No
Conversion: No

7 Floor 2 - WC



Max Dimensions: 3'4" x 6'5"
Calculated Area: 22 sq. ft
Included: Yes

Heated: Yes
Finished: Yes
Enclosed: Yes
Contiguous: Yes
Permitted: Yes
Wet space: Yes
Addition: No
Conversion: No

8 Floor 2 - Dining Room



Max Dimensions: 12'7" x 11'7"
Calculated Area: 146 sq. ft
Included: Yes

Heated: Yes
Finished: Yes
Enclosed: Yes
Contiguous: Yes
Permitted: Yes
Wet space: No
Addition: No
Conversion: No

6013 Apple Harvest Drive, Roanoke, Roanoke County, Virginia,
United States, 24012

9 Floor 2 - Laundry



Max Dimensions: 5'0" x 7'6"
Calculated Area: 38 sq. ft
Included: Yes

Heated: Yes
Finished: Yes
Enclosed: Yes
Contiguous: Yes
Permitted: Yes
Wet space: No
Addition: No
Conversion: No

10 Floor 2 - Foyer



Max Dimensions: 10'0" x 15'9"
Calculated Area: 117 sq. ft
Included: Yes

Heated: Yes
Finished: Yes
Enclosed: Yes
Contiguous: Yes
Permitted: Yes
Wet space: No
Addition: No
Conversion: No

11 Floor 2 - Kitchen



Max Dimensions: 16'1" x 13'1"
Calculated Area: 148 sq. ft
Included: Yes

Heated: Yes
Finished: Yes
Enclosed: Yes
Contiguous: Yes
Permitted: Yes
Wet space: No
Addition: No
Conversion: No

6013 Apple Harvest Drive, Roanoke, Roanoke County, Virginia,
United States, 24012

12 Floor 2 - Covered Deck



Max Dimensions: 17'5" x 11'8"
Calculated Area: 188 sq. ft
Included: No

Heated: No
Finished: Yes
Enclosed: No
Contiguous: Yes
Permitted: Yes
Wet space: No
Addition: No
Conversion: No

13 Floor 2 - Office



Max Dimensions: 5'1" x 9'11"
Calculated Area: 50 sq. ft
Included: Yes

Heated: Yes
Finished: Yes
Enclosed: Yes
Contiguous: Yes
Permitted: Yes
Wet space: No
Addition: No
Conversion: No

14 Floor 2 - Patio



Max Dimensions: 11'11" x 11'8"
Calculated Area: 143 sq. ft
Included: No

Heated: No
Finished: Yes
Enclosed: No
Contiguous: Yes
Permitted: Yes
Wet space: No
Addition: No
Conversion: No

Home report

6013 Apple Harvest Drive, Roanoke, Roanoke County, Virginia,
United States, 24012

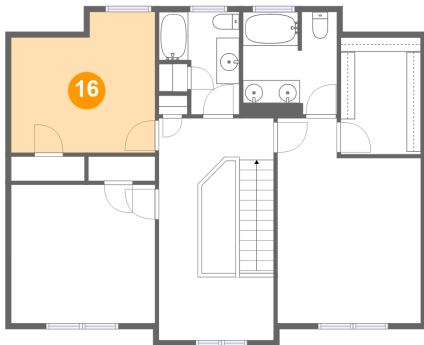
15 Floor 2 - Porch



Max Dimensions: 10'4" x 5'9"
Calculated Area: 60 sq. ft
Included: No

Heated: No
Finished: Yes
Enclosed: No
Contiguous: Yes
Permitted: Yes
Wet space: No
Addition: No
Conversion: No

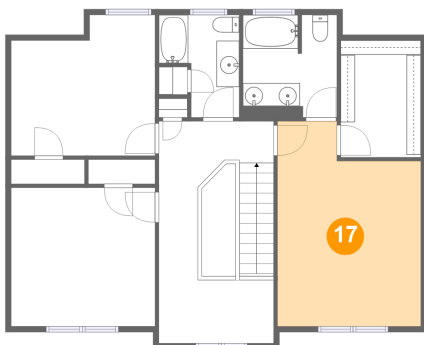
16 Floor 3 - Bedroom



Max Dimensions: 12'7" x 12'4"
Calculated Area: 139 sq. ft
Included: Yes

Heated: Yes
Finished: Yes
Enclosed: Yes
Contiguous: Yes
Permitted: Yes
Wet space: No
Addition: No
Conversion: No

17 Floor 3 - Primary Bedroom

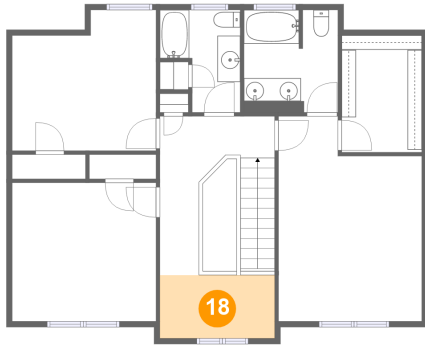


Max Dimensions: 12'6" x 17'11"
Calculated Area: 199 sq. ft
Included: Yes

Heated: Yes
Finished: Yes
Enclosed: Yes
Contiguous: Yes
Permitted: Yes
Wet space: No
Addition: No
Conversion: No

6013 Apple Harvest Drive, Roanoke, Roanoke County, Virginia,
United States, 24012

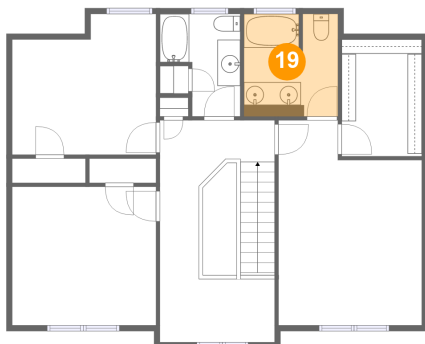
18 Floor 3 - Sitting Room



Max Dimensions: 10'0" x 5'6"
Calculated Area: 55 sq. ft
Included: Yes

Heated: Yes
Finished: Yes
Enclosed: Yes
Contiguous: Yes
Permitted: Yes
Wet space: No
Addition: No
Conversion: No

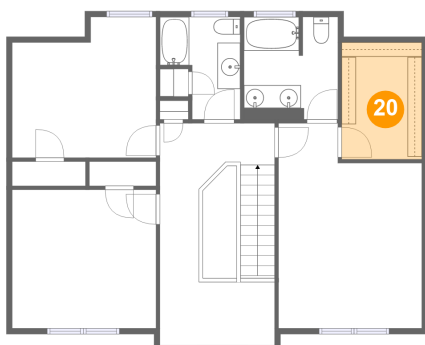
19 Floor 3 - Bath



Max Dimensions: 8'3" x 8'11"
Calculated Area: 72 sq. ft
Included: Yes

Heated: Yes
Finished: Yes
Enclosed: Yes
Contiguous: Yes
Permitted: Yes
Wet space: Yes
Addition: No
Conversion: No

20 Floor 3 - W.I.C.



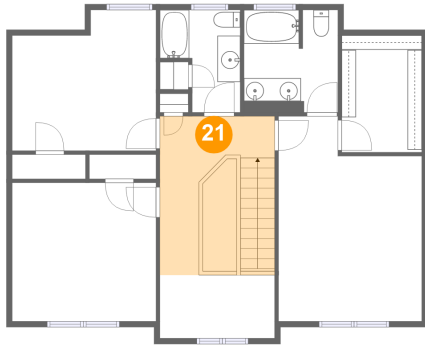
Max Dimensions: 7'0" x 10'2"
Calculated Area: 71 sq. ft
Included: Yes

Heated: Yes
Finished: Yes
Enclosed: Yes
Contiguous: Yes
Permitted: Yes
Wet space: No
Addition: No
Conversion: No

Home report

6013 Apple Harvest Drive, Roanoke, Roanoke County, Virginia,
United States, 24012

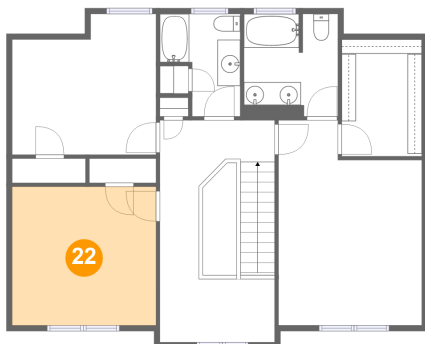
21 Floor 3 - Hall



Max Dimensions: 10'0" x 13'10"
Calculated Area: 139 sq. ft
Included: Yes

Heated: Yes
Finished: Yes
Enclosed: Yes
Contiguous: Yes
Permitted: Yes
Wet space: No
Addition: No
Conversion: No

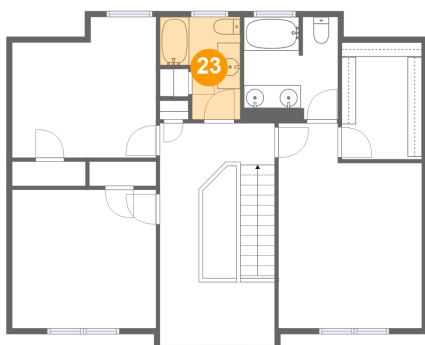
22 Floor 3 - Bedroom



Max Dimensions: 12'7" x 12'1"
Calculated Area: 152 sq. ft
Included: Yes

Heated: Yes
Finished: Yes
Enclosed: Yes
Contiguous: Yes
Permitted: Yes
Wet space: No
Addition: No
Conversion: No

23 Floor 3 - Bath



Max Dimensions: 7'0" x 8'11"
Calculated Area: 49 sq. ft
Included: Yes

Heated: Yes
Finished: Yes
Enclosed: Yes
Contiguous: Yes
Permitted: Yes
Wet space: Yes
Addition: No
Conversion: No