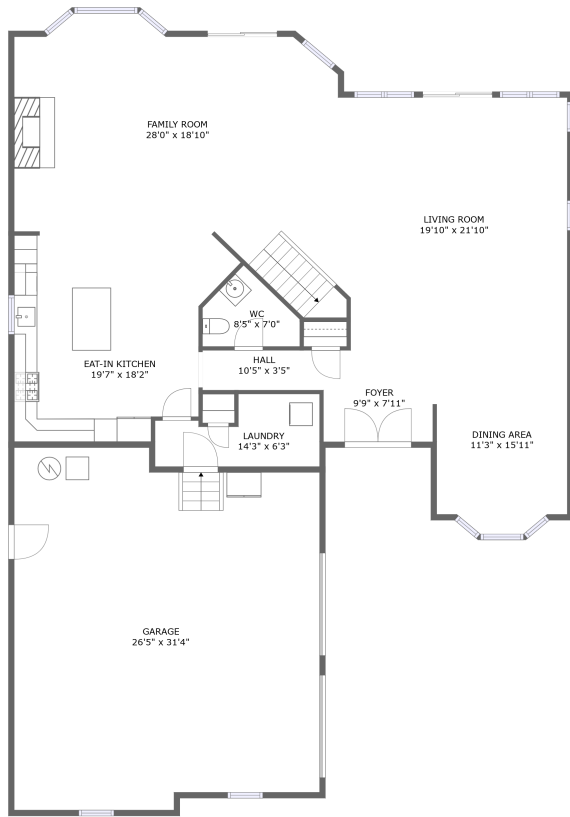
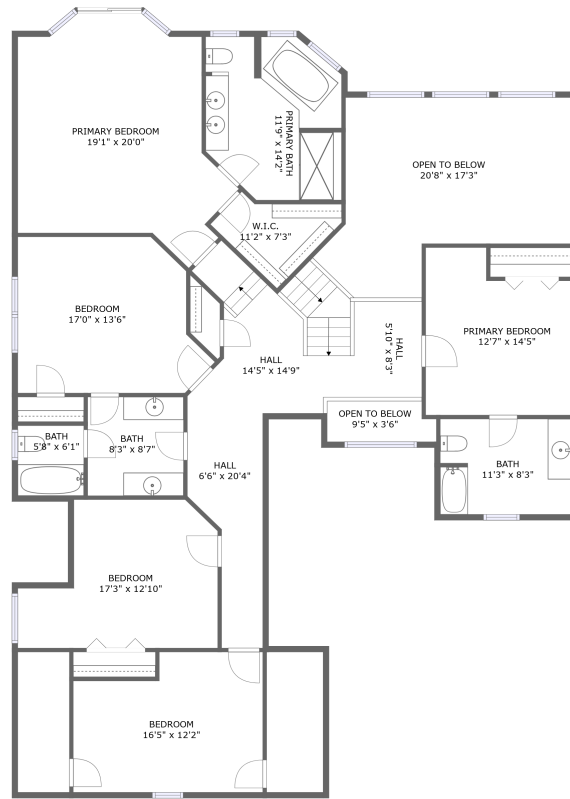


13 Cedar Tree Lane, Evergreen Shores, Toms River, Ocean County, New Jersey, United States,



FLOOR 1




FLOOR 2

Property Summary


 **1** garages

 **5** bedrooms

 **3** bathrooms

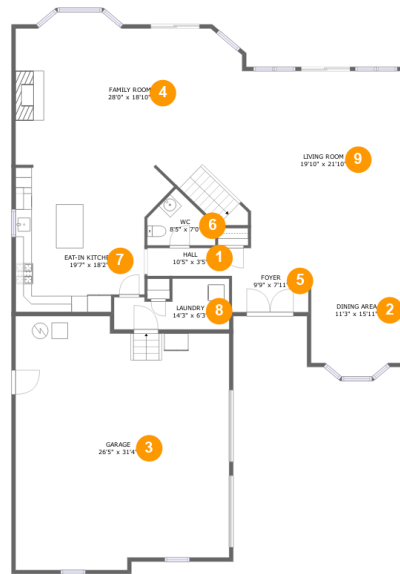
 **1** half baths

 **2** floors

 **3,635** Gross Living Area sqft

 **5,039** total sqft

13 Cedar Tree Lane, Evergreen Shores, Toms River, Ocean County, New Jersey, United States,



Room Dimensions

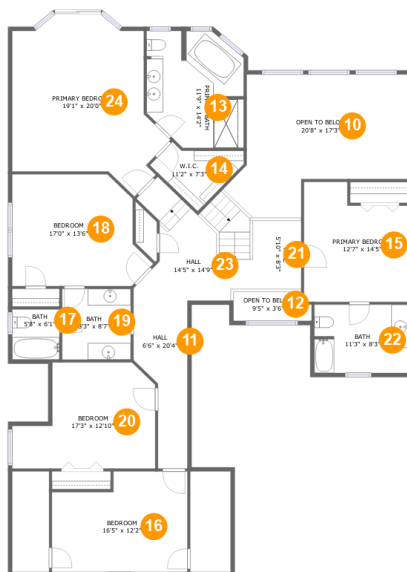
Floor 1

Total sqft: 2604

Living area: 1784

#	Room name	Dimensions	Area (sqft)	Counted as Living Area
1	Hall	10'5" x 3'5"	36 sq. ft	Yes
2	Dining Area	11'3" x 15'11"	170 sq. ft	Yes
3	Garage	26'5" x 31'4"	777 sq. ft	No
4	Family Room	28'0" x 18'10"	534 sq. ft	Yes
5	Foyer	9'9" x 7'11"	76 sq. ft	Yes
6	Wc	8'5" x 7'0"	41 sq. ft	Yes
7	Eat-in Kitchen	19'7" x 18'2"	293 sq. ft	Yes
8	Laundry	14'3" x 6'3"	71 sq. ft	Yes
9	Living Room	19'10" x 21'10"	427 sq. ft	Yes

13 Cedar Tree Lane, Evergreen Shores, Toms River, Ocean County, New Jersey, United States,



Room Dimensions

Floor 2

Total sqft: 2435

Living area: 1851

#	Room name	Dimensions	Area (sqft)	Counted as Living Area
10	Open To Below	20'8" x 17'3"	285 sq. ft	No
11	Hall	6'6" x 20'4"	66 sq. ft	Yes
12	Open To Below	9'5" x 3'6"	31 sq. ft	No
13	Primary Bath	11'9" x 14'2"	147 sq. ft	Yes
14	W.i.c.	11'2" x 7'3"	51 sq. ft	Yes
15	Primary Bedroom	12'7" x 14'5"	161 sq. ft	Yes
16	Bedroom	16'5" x 12'2"	120 sq. ft	Yes
17	Bath	5'8" x 6'1"	35 sq. ft	Yes
18	Bedroom	17'0" x 13'6"	198 sq. ft	Yes
19	Bath	8'3" x 8'7"	71 sq. ft	Yes
20	Bedroom	17'3" x 12'10"	181 sq. ft	Yes

Scan captured on Fri, 26 Jul 2024 00:18:34 GMT

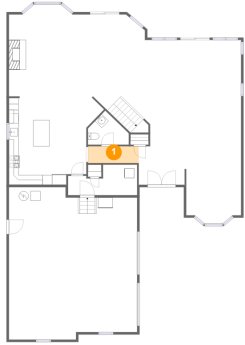
Information is calculated by CubiCasa technology; deemed highly reliable but not guaranteed.

13 Cedar Tree Lane, Evergreen Shores, Toms River, Ocean County, New Jersey, United States,

#	Room name	Dimensions	Area (sqft)	Counted as Living Area
21	Hall	5'10" x 8'3"	52 sq. ft	Yes
22	Bath	11'3" x 8'3"	92 sq. ft	Yes
23	Hall	14'5" x 14'9"	151 sq. ft	Yes
24	Primary Bedroom	19'1" x 20'0"	306 sq. ft	Yes

13 Cedar Tree Lane, Evergreen Shores, Toms River, Ocean County, New Jersey, United States,

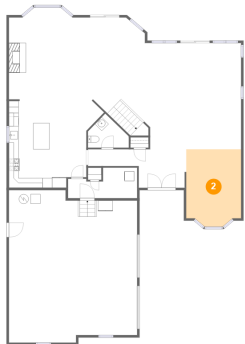
1 Floor 1 - Hall



Dimensions: 10'5" x 3'5"
Area: 36 sq. ft
Counted as Living Area:
Yes

Heated: Yes
Finished: Yes
Enclosed: Yes
Contiguous:
Yes
Permitted: Yes
Wet Space: No
Addition: No
Conversion: No

2 Floor 1 - Dining Area

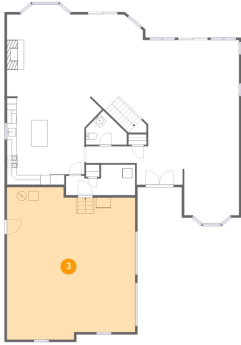


Dimensions: 11'3" x 15'11"
Area: 170 sq. ft
Counted as Living Area:
Yes

Heated: Yes
Finished: Yes
Enclosed: Yes
Contiguous:
Yes
Permitted: Yes
Wet Space: No
Addition: No
Conversion: No

13 Cedar Tree Lane, Evergreen Shores, Toms River, Ocean County, New Jersey, United States,

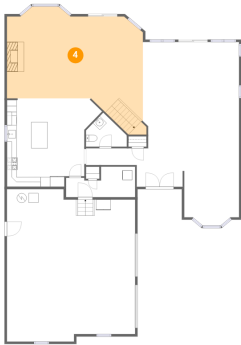
3 Floor 1 - Garage



Dimensions: 26'5" x 31'4"
Area: 777 sq. ft
Counted as Living Area: No

Heated: No
Finished: No
Enclosed: Yes
Contiguous: No
Permitted: Yes
Wet Space: No
Addition: No
Conversion: No

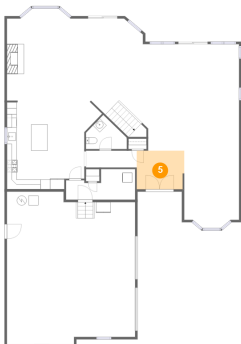
4 Floor 1 - Family Room



Dimensions: 28'0" x 18'10"
Area: 534 sq. ft
Counted as Living Area: Yes

Heated: Yes
Finished: Yes
Enclosed: Yes
Contiguous: Yes
Permitted: Yes
Wet Space: No
Addition: No
Conversion: No

5 Floor 1 - Foyer

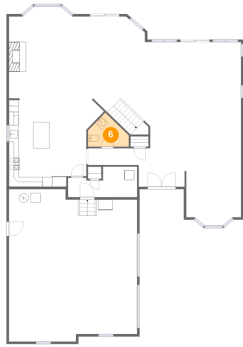


Dimensions: 9'9" x 7'11"
Area: 76 sq. ft
Counted as Living Area: Yes

Heated: Yes
Finished: Yes
Enclosed: Yes
Contiguous: Yes
Permitted: Yes
Wet Space: No
Addition: No
Conversion: No

13 Cedar Tree Lane, Evergreen Shores, Toms River, Ocean County, New Jersey, United States,

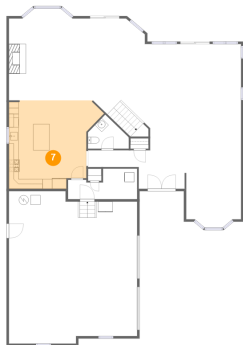
6 Floor 1 - Wc



Dimensions: 8'5" x 7'0"
Area: 41 sq. ft
Counted as Living Area:
Yes

Heated: Yes
Finished: Yes
Enclosed: Yes
Contiguous:
Yes
Permitted: Yes
Wet Space: Yes
Addition: No
Conversion: No

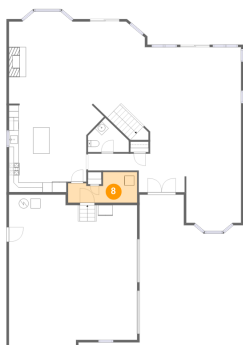
7 Floor 1 - Eat-in Kitchen



Dimensions: 19'7" x 18'2"
Area: 293 sq. ft
Counted as Living Area:
Yes

Heated: Yes
Finished: Yes
Enclosed: Yes
Contiguous:
Yes
Permitted: Yes
Wet Space: No
Addition: No
Conversion: No

8 Floor 1 - Laundry

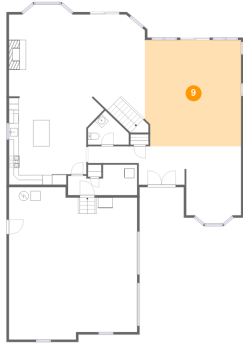


Dimensions: 14'3" x 6'3"
Area: 71 sq. ft
Counted as Living Area:
Yes

Heated: Yes
Finished: Yes
Enclosed: Yes
Contiguous:
Yes
Permitted: Yes
Wet Space: No
Addition: No
Conversion: No

13 Cedar Tree Lane, Evergreen Shores, Toms River, Ocean County, New Jersey, United States,

9 Floor 1 - Living Room



Dimensions: 19'10" x 21'10"
Area: 427 sq. ft
Counted as Living Area:
Yes

Heated: Yes
Finished: Yes
Enclosed: Yes
Contiguous:
Yes
Permitted: Yes
Wet Space: No
Addition: No
Conversion: No

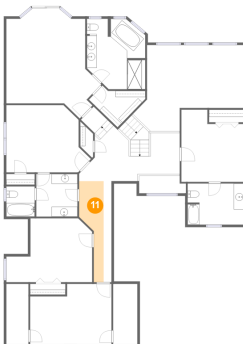
10 Floor 2 - Open To Below



Dimensions: 20'8" x 17'3"
Area: 285 sq. ft
Counted as Living Area: No

Heated: No
Finished: No
Enclosed: No
Contiguous: Yes
Permitted: No
Wet Space: No
Addition: No
Conversion: No

11 Floor 2 - Hall

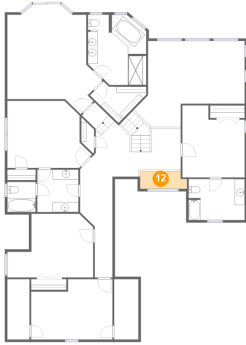


Dimensions: 6'6" x 20'4"
Area: 66 sq. ft
Counted as Living Area:
Yes

Heated: Yes
Finished: Yes
Enclosed: Yes
Contiguous:
Yes
Permitted: Yes
Wet Space: No
Addition: No
Conversion: No

13 Cedar Tree Lane, Evergreen Shores, Toms River, Ocean County, New Jersey, United States,

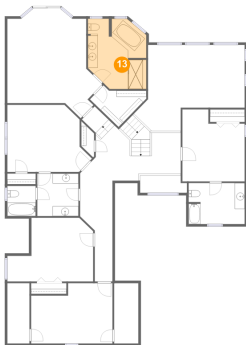
12 Floor 2 - Open To Below



Dimensions: 9'5" x 3'6"
Area: 31 sq. ft
Counted as Living Area: No

Heated: No
Finished: No
Enclosed: No
Contiguous: Yes
Permitted: No
Wet Space: No
Addition: No
Conversion: No

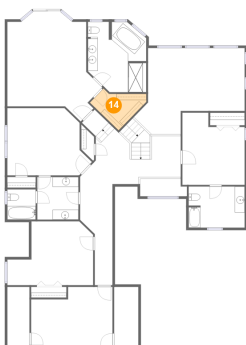
13 Floor 2 - Primary Bath



Dimensions: 11'9" x 14'2"
Area: 147 sq. ft
Counted as Living Area: Yes

Heated: Yes
Finished: Yes
Enclosed: Yes
Contiguous: Yes
Permitted: Yes
Wet Space: Yes
Addition: No
Conversion: No

14 Floor 2 - W.i.c.

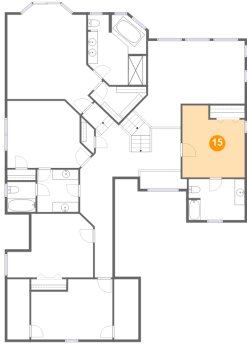


Dimensions: 11'2" x 7'3"
Area: 51 sq. ft
Counted as Living Area: Yes

Heated: Yes
Finished: Yes
Enclosed: Yes
Contiguous: Yes
Permitted: Yes
Wet Space: No
Addition: No
Conversion: No

13 Cedar Tree Lane, Evergreen Shores, Toms River, Ocean County, New Jersey, United States,

15 Floor 2 - Primary Bedroom



Dimensions: 12'7" x 14'5"
Area: 161 sq. ft
Counted as Living Area:
Yes

Heated: Yes
Finished: Yes
Enclosed: Yes
Contiguous:
Yes
Permitted: Yes
Wet Space: No
Addition: No
Conversion: No

16 Floor 2 - Bedroom



Dimensions: 16'5" x 12'2"
Area: 120 sq. ft
Counted as Living Area:
Yes

Heated: Yes
Finished: Yes
Enclosed: Yes
Contiguous:
Yes
Permitted: Yes
Wet Space: No
Addition: No
Conversion: No

17 Floor 2 - Bath



Dimensions: 5'8" x 6'1"
Area: 35 sq. ft
Counted as Living Area:
Yes

Heated: Yes
Finished: Yes
Enclosed: Yes
Contiguous:
Yes
Permitted: Yes
Wet Space: Yes
Addition: No
Conversion: No

13 Cedar Tree Lane, Evergreen Shores, Toms River, Ocean County, New Jersey, United States,

18 Floor 2 - Bedroom



Dimensions: 17'0" x 13'6"
Area: 198 sq. ft
Counted as Living Area:
Yes

Heated: Yes
Finished: Yes
Enclosed: Yes
Contiguous:
Yes
Permitted: Yes
Wet Space: No
Addition: No
Conversion: No

19 Floor 2 - Bath



Dimensions: 8'3" x 8'7"
Area: 71 sq. ft
Counted as Living Area:
Yes

Heated: Yes
Finished: Yes
Enclosed: Yes
Contiguous:
Yes
Permitted: Yes
Wet Space: Yes
Addition: No
Conversion: No

20 Floor 2 - Bedroom



Dimensions: 17'3" x 12'10"
Area: 181 sq. ft
Counted as Living Area:
Yes

Heated: Yes
Finished: Yes
Enclosed: Yes
Contiguous:
Yes
Permitted: Yes
Wet Space: No
Addition: No
Conversion: No

13 Cedar Tree Lane, Evergreen Shores, Toms River, Ocean County, New Jersey, United States,

21 Floor 2 - Hall



Dimensions: 5'10" x 8'3"
Area: 52 sq. ft
Counted as Living Area:
Yes

Heated: Yes
Finished: Yes
Enclosed: Yes
Contiguous:
Yes
Permitted: Yes
Wet Space: No
Addition: No
Conversion: No

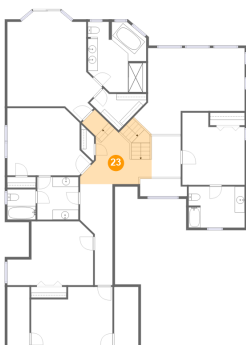
22 Floor 2 - Bath



Dimensions: 11'3" x 8'3"
Area: 92 sq. ft
Counted as Living Area:
Yes

Heated: Yes
Finished: Yes
Enclosed: Yes
Contiguous:
Yes
Permitted: Yes
Wet Space: Yes
Addition: No
Conversion: No

23 Floor 2 - Hall

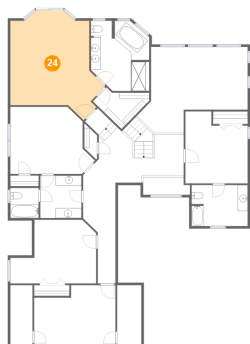


Dimensions: 14'5" x 14'9"
Area: 151 sq. ft
Counted as Living Area:
Yes

Heated: Yes
Finished: Yes
Enclosed: Yes
Contiguous:
Yes
Permitted: Yes
Wet Space: No
Addition: No
Conversion: No

13 Cedar Tree Lane, Evergreen Shores, Toms River, Ocean County, New Jersey, United States,

24 Floor 2 - Primary Bedroom



Dimensions: 19'1" x 20'0"
Area: 306 sq. ft
Counted as Living Area:
Yes

Heated: Yes
Finished: Yes
Enclosed: Yes
Contiguous:
Yes
Permitted: Yes
Wet Space: No
Addition: No
Conversion: No