

39 Putman Avenue, Lindenlea, Ottawa, Ontario, Canada, K1M 1Z1, 32



Property summary

 **1** Garages

 **1** Bedrooms

 **2** Bathrooms

 **0** Half baths

 **5** Floors

 **1,199** Gross living area sqft

 **2,083** Total sqft

39 Putman Avenue, Lindenlea, Ottawa, Ontario,
Canada, K1M 1Z1, 32



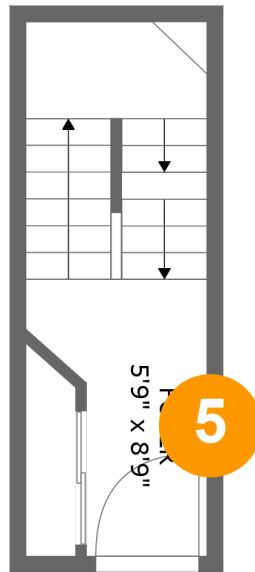
Room dimensions

Floor 1

Total sqft: 546 Living area: 0

#		Dimensions	sqft	Counted as living area
1	Utility	8'3" x 16'8"	138 sq. ft	No
2	Hall	5'9" x 7'2"	58 sq. ft	No
3	Hall	9'11" x 15'11"	105 sq. ft	No
4	Garage	9'9" x 17'8"	173 sq. ft	No

**39 Putman Avenue, Lindenlea, Ottawa, Ontario,
Canada, K1M 1Z1, 32**



Room dimensions

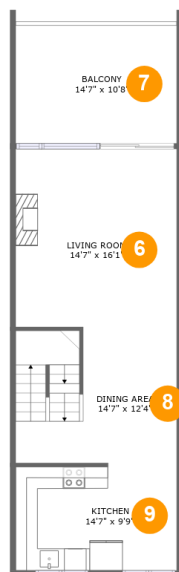
Floor 2

Total sqft: 117

Living area: 15

#		Dimensions	sqft	Counted as living area
5	Foyer	5'9" x 8'9"	86 sq. ft	No

39 Putman Avenue, Lindenlea, Ottawa, Ontario,
Canada, K1M 1Z1, 32



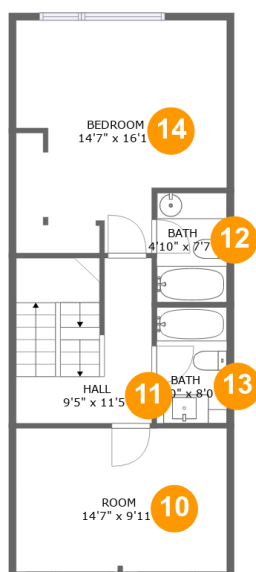
Room dimensions

Floor 3

Total sqft: 750 Living area: 595

#		Dimensions	sqft	Counted as living area
6	Living Room	14'7" x 16'1"	234 sq. ft	Yes
7	Balcony	14'7" x 10'8"	155 sq. ft	No
8	Dining Area	14'7" x 12'4"	175 sq. ft	Yes
9	Kitchen	14'7" x 9'9"	139 sq. ft	Yes

39 Putman Avenue, Lindenlea, Ottawa, Ontario,
Canada, K1M 1Z1, 32



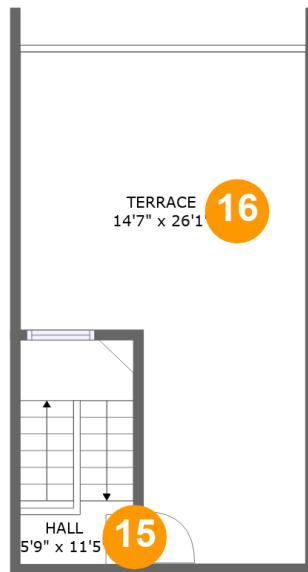
Room dimensions

Floor 4

Total sqft: 589 Living area: 589

#		Dimensions	sqft	Counted as living area
10	Room	14'7" x 9'11"	144 sq. ft	Yes
11	Hall	9'5" x 11'5"	105 sq. ft	Yes
12	Bath	4'10" x 7'7"	37 sq. ft	Yes
13	Bath	4'10" x 8'0"	39 sq. ft	Yes
14	Bedroom	14'7" x 16'1"	209 sq. ft	Yes

**39 Putman Avenue, Lindenlea, Ottawa, Ontario,
Canada, K1M 1Z1, 32**



Room dimensions

Floor 5

Total sqft: 81

Living area: 0

#		Dimensions	sqft	Counted as living area
15	Hall	5'9" x 11'5"	66 sq. ft	No
16	Terrace	14'7" x 26'1"	305 sq. ft	No

**39 Putman Avenue, Lindenlea, Ottawa, Ontario,
Canada, K1M 1Z1, 32**

1 Floor 1 - Utility



Dimensions: 8'3" x 16'8"
Area: 138 sq. ft
Counted as living area: No

Heated: Yes
Finished: No
Enclosed: Yes
Contiguous: Yes
Permitted: Yes
Wet space: No
Addition: No
Conversion: No

2 Floor 1 - Hall



Dimensions: 5'9" x 7'2"
Area: 58 sq. ft
Counted as living area: No

Heated: Yes
Finished: Yes
Enclosed: Yes
Contiguous: No
Permitted: Yes
Wet space: No
Addition: No
Conversion: No

39 Putman Avenue, Lindenlea, Ottawa, Ontario,
Canada, K1M 1Z1, 32

3 Floor 1 - Hall



Dimensions: 9'11" x 15'11"
Area: 105 sq. ft
Counted as living area: No

Heated: Yes
Finished: No
Enclosed: Yes
Contiguous: Yes
Permitted: Yes
Wet space: No
Addition: No
Conversion: No

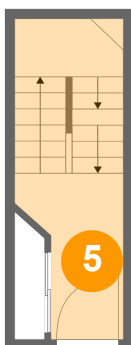
4 Floor 1 - Garage



Dimensions: 9'9" x 17'8"
Area: 173 sq. ft
Counted as living area: No

Heated: No
Finished: No
Enclosed: Yes
Contiguous: Yes
Permitted: Yes
Wet space: No
Addition: No
Conversion: No

5 Floor 2 - Foyer

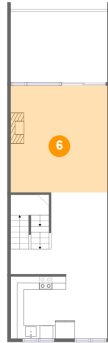


Dimensions: 5'9" x 8'9"
Area: 86 sq. ft
Counted as living area: No

Heated: Yes
Finished: Yes
Enclosed: Yes
Contiguous: Yes
Permitted: Yes
Wet space: No
Addition: No
Conversion: No

39 Putman Avenue, Lindenlea, Ottawa, Ontario,
Canada, K1M 1Z1, 32

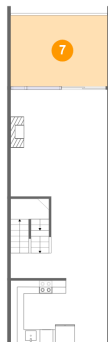
6 Floor 3 - Living Room



Dimensions: 14'7" x 16'1"
Area: 234 sq. ft
Counted as living area: Yes

Heated: Yes
Finished: Yes
Enclosed: Yes
Contiguous: Yes
Permitted: Yes
Wet space: No
Addition: No
Conversion: No

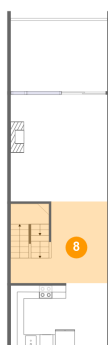
7 Floor 3 - Balcony



Dimensions: 14'7" x 10'8"
Area: 155 sq. ft
Counted as living area: No

Heated: No
Finished: Yes
Enclosed: No
Contiguous: Yes
Permitted: Yes
Wet space: No
Addition: No
Conversion: No

8 Floor 3 - Dining Area

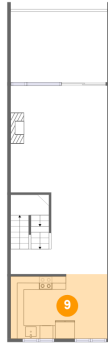


Dimensions: 14'7" x 12'4"
Area: 175 sq. ft
Counted as living area: Yes

Heated: Yes
Finished: Yes
Enclosed: Yes
Contiguous: Yes
Permitted: Yes
Wet space: No
Addition: No
Conversion: No

39 Putman Avenue, Lindenlea, Ottawa, Ontario,
Canada, K1M 1Z1, 32

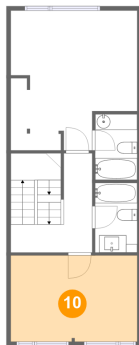
9 Floor 3 - Kitchen



Dimensions: 14'7" x 9'9"
Area: 139 sq. ft
Counted as living area: Yes

Heated: Yes
Finished: Yes
Enclosed: Yes
Contiguous: Yes
Permitted: Yes
Wet space: No
Addition: No
Conversion: No

10 Floor 4 - Room



Dimensions: 14'7" x 9'11"
Area: 144 sq. ft
Counted as living area: Yes

Heated: Yes
Finished: Yes
Enclosed: Yes
Contiguous: Yes
Permitted: Yes
Wet space: No
Addition: No
Conversion: No

11 Floor 4 - Hall

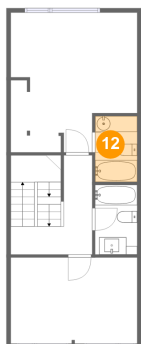


Dimensions: 9'5" x 11'5"
Area: 105 sq. ft
Counted as living area: Yes

Heated: Yes
Finished: Yes
Enclosed: Yes
Contiguous: Yes
Permitted: Yes
Wet space: No
Addition: No
Conversion: No

39 Putman Avenue, Lindenlea, Ottawa, Ontario,
Canada, K1M 1Z1, 32

12 Floor 4 - Bath



Dimensions: 4'10" x 7'7"
Area: 37 sq. ft
Counted as living area: Yes

Heated: Yes
Finished: Yes
Enclosed: Yes
Contiguous: Yes
Permitted: Yes
Wet space: Yes
Addition: No
Conversion: No

13 Floor 4 - Bath



Dimensions: 4'10" x 8'0"
Area: 39 sq. ft
Counted as living area: Yes

Heated: Yes
Finished: Yes
Enclosed: Yes
Contiguous: Yes
Permitted: Yes
Wet space: Yes
Addition: No
Conversion: No

14 Floor 4 - Bedroom

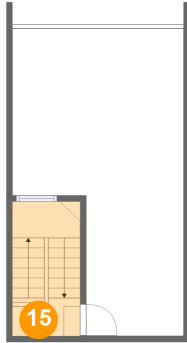


Dimensions: 14'7" x 16'1"
Area: 209 sq. ft
Counted as living area: Yes

Heated: Yes
Finished: Yes
Enclosed: Yes
Contiguous: Yes
Permitted: Yes
Wet space: No
Addition: No
Conversion: No

39 Putman Avenue, Lindenlea, Ottawa, Ontario,
Canada, K1M 1Z1, 32

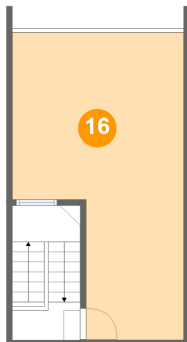
15 Floor 5 - Hall



Dimensions: 5'9" x 11'5"
Area: 66 sq. ft
Counted as living area: No

Heated: Yes
Finished: Yes
Enclosed: Yes
Contiguous: No
Permitted: Yes
Wet space: No
Addition: No
Conversion: No

16 Floor 5 - Terrace



Dimensions: 14'7" x 26'1"
Area: 305 sq. ft
Counted as living area: No

Heated: No
Finished: No
Enclosed: No
Contiguous: Yes
Permitted: No
Wet space: No
Addition: No
Conversion: No