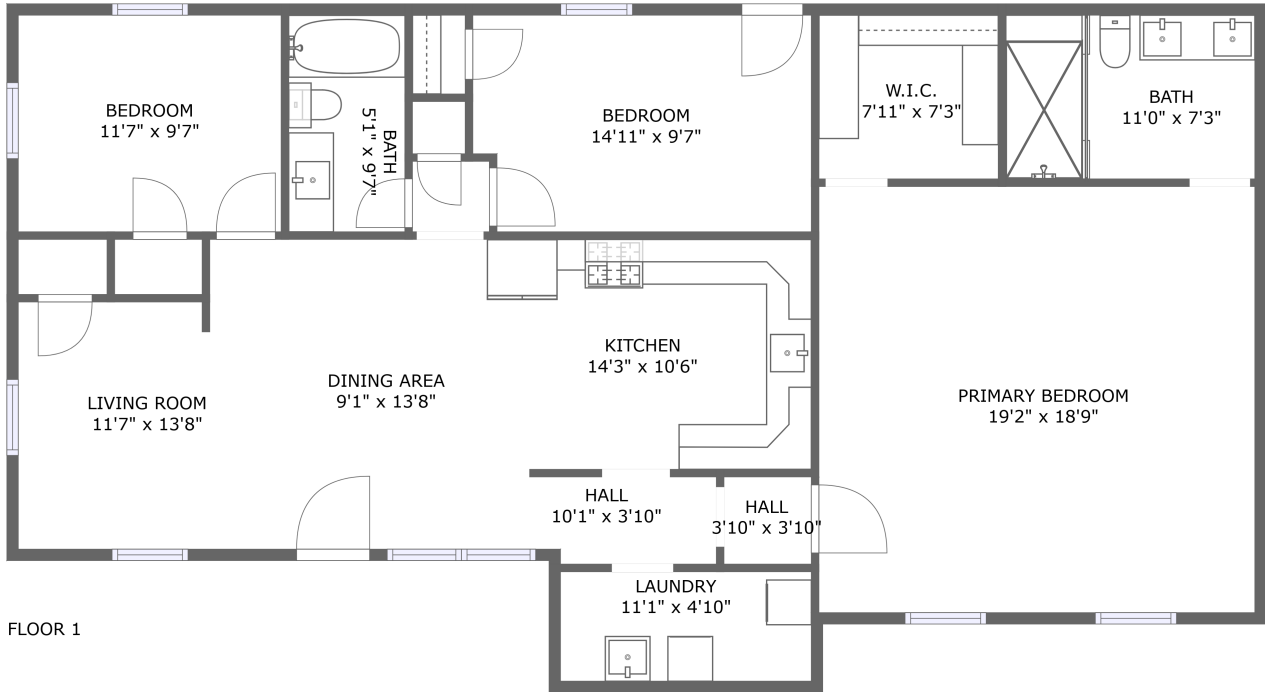


# 4136 Bethlehem Road, Hudson, Lufkin, Angelina County, Texas, United States, 75904




## Property Summary


 **0** garages

 **3** bedrooms

 **2** bathrooms

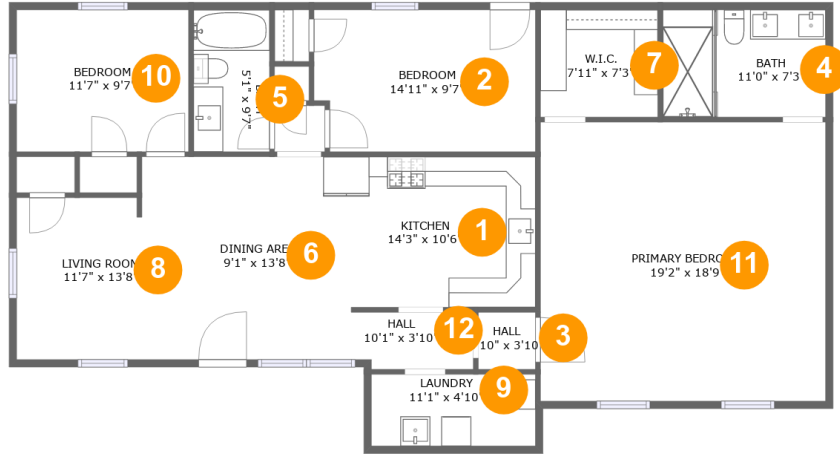
 **0** half baths

 **1** floors

 **1,484** Gross Living Area sqft

 **1,484** total sqft

# 4136 Bethlehem Road, Hudson, Lufkin, Angelina County, Texas, United States, 75904



## Room Dimensions

Floor 1

Total sqft: 1484

Living area: 1484

#	Room name	Dimensions	Area (sqft)	Counted as Living Area
1	Kitchen	14'3" x 10'6"	145 sq. ft	Yes
2	Bedroom	14'11" x 9'7"	139 sq. ft	Yes
3	Hall	3'10" x 3'10"	15 sq. ft	Yes
4	Bath	11'0" x 7'3"	79 sq. ft	Yes
5	Bath	5'1" x 9'7"	49 sq. ft	Yes
6	Dining Area	9'1" x 13'8"	124 sq. ft	Yes
7	W.i.c.	7'11" x 7'3"	57 sq. ft	Yes
8	Living Room	11'7" x 13'8"	134 sq. ft	Yes
9	Laundry	11'1" x 4'10"	53 sq. ft	Yes
10	Bedroom	11'7" x 9'7"	110 sq. ft	Yes
11	Primary Bedroom	19'2" x 18'9"	360 sq. ft	Yes

**4136 Bethlehem Road, Hudson, Lufkin, Angelina  
County, Texas, United States, 75904**

#	Room name	Dimensions	Area (sqft)	Counted as Living Area
12	Hall	10'1" x 3'10"	37 sq. ft	Yes

# 4136 Bethlehem Road, Hudson, Lufkin, Angelina County, Texas, United States, 75904

## 1 Floor 1 - Kitchen



Dimensions: 14'3" x 10'6"  
Area: 145 sq. ft  
Counted as Living Area:  
Yes

Heated: Yes  
Finished: Yes  
Enclosed: Yes  
Contiguous:  
Yes  
Permitted: Yes  
Wet Space: No  
Addition: No  
Conversion: No

## 2 Floor 1 - Bedroom



Dimensions: 14'11" x 9'7"  
Area: 139 sq. ft  
Counted as Living Area:  
Yes

Heated: Yes  
Finished: Yes  
Enclosed: Yes  
Contiguous:  
Yes  
Permitted: Yes  
Wet Space: No  
Addition: No  
Conversion: No

# 4136 Bethlehem Road, Hudson, Lufkin, Angelina County, Texas, United States, 75904

## 3 Floor 1 - Hall



Dimensions: 3'10" x 3'10"  
Area: 15 sq. ft  
Counted as Living Area:  
Yes

Heated: Yes  
Finished: Yes  
Enclosed: Yes  
Contiguous:  
Yes  
Permitted: Yes  
Wet Space: No  
Addition: No  
Conversion: No

## 4 Floor 1 - Bath



Dimensions: 11'0" x 7'3"  
Area: 79 sq. ft  
Counted as Living Area:  
Yes

Heated: Yes  
Finished: Yes  
Enclosed: Yes  
Contiguous:  
Yes  
Permitted: Yes  
Wet Space: Yes  
Addition: No  
Conversion: No

## 5 Floor 1 - Bath

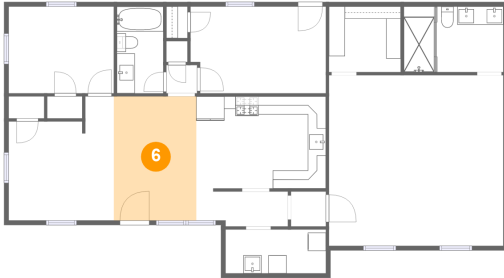


Dimensions: 5'1" x 9'7"  
Area: 49 sq. ft  
Counted as Living Area:  
Yes

Heated: Yes  
Finished: Yes  
Enclosed: Yes  
Contiguous:  
Yes  
Permitted: Yes  
Wet Space: Yes  
Addition: No  
Conversion: No

# 4136 Bethlehem Road, Hudson, Lufkin, Angelina County, Texas, United States, 75904

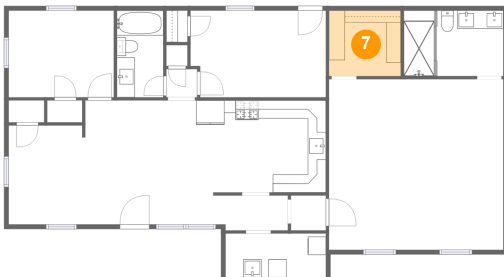
## 6 Floor 1 - Dining Area



Dimensions: 9'1" x 13'8"  
Area: 124 sq. ft  
Counted as Living Area:  
Yes

Heated: Yes  
Finished: Yes  
Enclosed: Yes  
Contiguous:  
Yes  
Permitted: Yes  
Wet Space: No  
Addition: No  
Conversion: No

## 7 Floor 1 - W.i.c.



Dimensions: 7'11" x 7'3"  
Area: 57 sq. ft  
Counted as Living Area:  
Yes

Heated: Yes  
Finished: Yes  
Enclosed: Yes  
Contiguous:  
Yes  
Permitted: Yes  
Wet Space: No  
Addition: No  
Conversion: No

## 8 Floor 1 - Living Room



Dimensions: 11'7" x 13'8"  
Area: 134 sq. ft  
Counted as Living Area:  
Yes

Heated: Yes  
Finished: Yes  
Enclosed: Yes  
Contiguous:  
Yes  
Permitted: Yes  
Wet Space: No  
Addition: No  
Conversion: No

# 4136 Bethlehem Road, Hudson, Lufkin, Angelina County, Texas, United States, 75904

## 9 Floor 1 - Laundry



Dimensions: 11'1" x 4'10"  
Area: 53 sq. ft  
Counted as Living Area:  
Yes

Heated: Yes  
Finished: Yes  
Enclosed: Yes  
Contiguous:  
Yes  
Permitted: Yes  
Wet Space: No  
Addition: No  
Conversion: No

## 10 Floor 1 - Bedroom



Dimensions: 11'7" x 9'7"  
Area: 110 sq. ft  
Counted as Living Area:  
Yes

Heated: Yes  
Finished: Yes  
Enclosed: Yes  
Contiguous:  
Yes  
Permitted: Yes  
Wet Space: No  
Addition: No  
Conversion: No

## 11 Floor 1 - Primary Bedroom

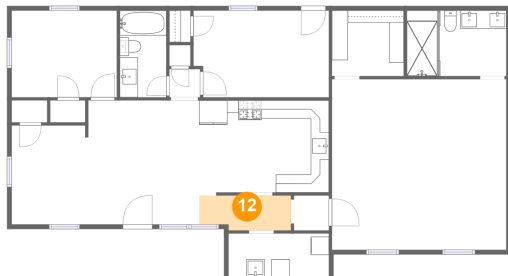


Dimensions: 19'2" x 18'9"  
Area: 360 sq. ft  
Counted as Living Area:  
Yes

Heated: Yes  
Finished: Yes  
Enclosed: Yes  
Contiguous:  
Yes  
Permitted: Yes  
Wet Space: No  
Addition: No  
Conversion: No

# 4136 Bethlehem Road, Hudson, Lufkin, Angelina County, Texas, United States, 75904

## 12 Floor 1 - Hall



Dimensions: 10'1" x 3'10"  
Area: 37 sq. ft  
Counted as Living Area:  
Yes

Heated: Yes  
Finished: Yes  
Enclosed: Yes  
Contiguous:  
Yes  
Permitted: Yes  
Wet Space: No  
Addition: No  
Conversion: No