

Home data report


19925 Gobbler Rd,Spearfish,SD,US





Total Area: 3807 sq. ft
Below Ground: 1787 sq. ft, 1st Floor: 2020 sq. ft
Excluded: Utility 158 sq. ft, Garage 1342 sq. ft, Walls: 263 sq. ft

Property summary

**2** Floors

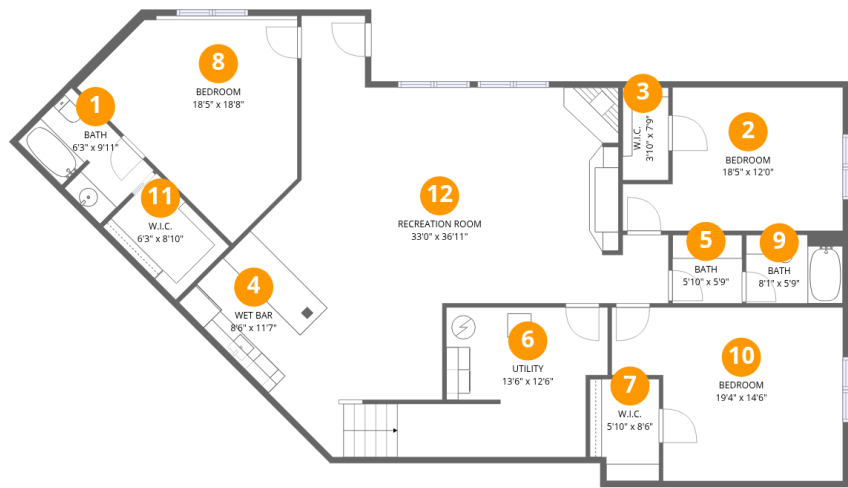
**6** Bedrooms

**4** Bathrooms

**1** Garages

Home data report

19925 Gobbler Rd,Spearfish,SD,US



Room dimensions

Floor 1 Below grade Total:1787sqft Excluded: 158sqft

#		Dimensions	sqft	Counted as living area
1	Bath	6'3" x 9'11"	61 sq. ft	Yes
2	Bedroom	18'5" x 12'0"	187 sq. ft	Yes
3	W.I.C.	3'10" x 7'9"	30 sq. ft	Yes
4	Wet Bar	8'6" x 11'7"	98 sq. ft	Yes
5	Bath	5'10" x 5'9"	33 sq. ft	Yes
6	Utility	13'6" x 12'6"	157 sq. ft	No
7	W.I.C.	5'10" x 8'6"	47 sq. ft	Yes
8	Bedroom	18'5" x 18'8"	234 sq. ft	Yes
9	Bath	8'1" x 5'9"	46 sq. ft	Yes
10	Bedroom	19'4" x 14'6"	243 sq. ft	Yes
11	W.I.C.	6'3" x 8'10"	55 sq. ft	Yes

Home data report

19925 Gobbler Rd,Spearfish,SD,US

#		Dimensions	sqft	Counted as living area
12	Recreation Room	33'0" x 36'11"	689 sq. ft	Yes

Home data report

19925 Gobbler Rd,Spearfish,SD,US



Room dimensions

Floor 2 Total:2020sqft Excluded: 1342sqft

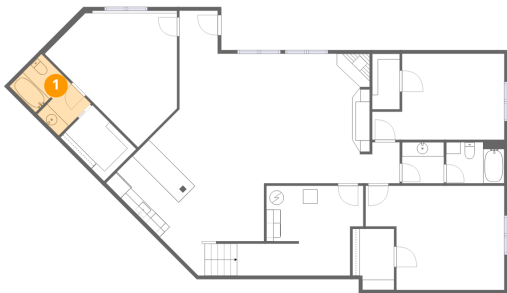
#		Dimensions	sqft	Counted as living area
13	Bath	7'3" x 9'2"	66 sq. ft	Yes
14	Living Room	17'2" x 20'10"	347 sq. ft	Yes
15	Primary Bedroom	16'2" x 13'11"	225 sq. ft	Yes
16	W.I.C.	7'5" x 7'9"	39 sq. ft	Yes
17	Dining Area	10'11" x 12'0"	132 sq. ft	Yes
18	Kitchen	14'1" x 14'1"	199 sq. ft	Yes
19	Garage	37'6" x 37'11"	1342 sq. ft	No
20	Bedroom	11'6" x 13'3"	153 sq. ft	Yes
21	Hall	11'8" x 3'8"	43 sq. ft	Yes
22	W.I.C.	10'4" x 8'8"	75 sq. ft	Yes
23	Bath	3'9" x 3'10"	21 sq. ft	Yes

Home data report

19925 Gobbler Rd,Spearfish,SD,US

#		Dimensions	sqft	Counted as living area
24	W.I.C.	7'3" x 5'3"	39 sq. ft	Yes
25	Foyer	21'8" x 10'0"	145 sq. ft	Yes
26	Bedroom	12'2" x 12'11"	150 sq. ft	Yes
27	Primary Bath	17'2" x 10'9"	135 sq. ft	Yes
28	Laundry	13'8" x 11'6"	101 sq. ft	Yes
29	W.I.C.	7'3" x 4'2"	30 sq. ft	Yes
30	Hall	4'2" x 7'3"	29 sq. ft	Yes

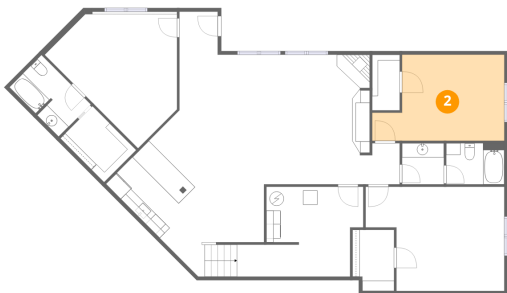
1 Floor 1 - Bath



Dimensions: 6'3" x 9'11"
Area: 61 sq. ft
Counted as living area: Yes

Heated: Yes
Finished: Yes
Enclosed: Yes
Contiguous: Yes
Permitted: Yes
Wet space: Yes
Addition: No
Conversion: No

2 Floor 1 - Bedroom



Dimensions: 18'5" x 12'0"
Area: 187 sq. ft
Counted as living area: Yes

Heated: Yes
Finished: Yes
Enclosed: Yes
Contiguous: Yes
Permitted: Yes
Wet space: No
Addition: No
Conversion: No

3 Floor 1 - W.I.C.



Dimensions: 3'10" x 7'9"
Area: 30 sq. ft
Counted as living area: Yes

Heated: Yes
Finished: Yes
Enclosed: Yes
Contiguous: Yes
Permitted: Yes
Wet space: No
Addition: No
Conversion: No

4 Floor 1 - Wet Bar



Dimensions: 8'6" x 11'7"
Area: 98 sq. ft
Counted as living area: Yes

Heated: Yes
Finished: Yes
Enclosed: Yes
Contiguous: Yes
Permitted: Yes
Wet space: No
Addition: No
Conversion: No

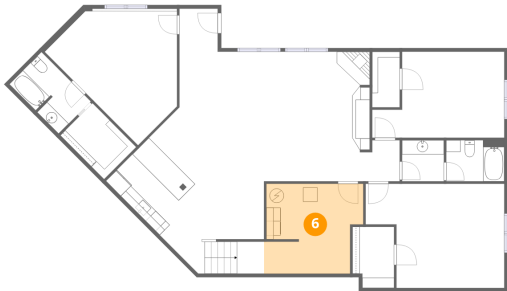
5 Floor 1 - Bath



Dimensions: 5'10" x 5'9"
Area: 33 sq. ft
Counted as living area: Yes

Heated: Yes
Finished: Yes
Enclosed: Yes
Contiguous: Yes
Permitted: Yes
Wet space: Yes
Addition: No
Conversion: No

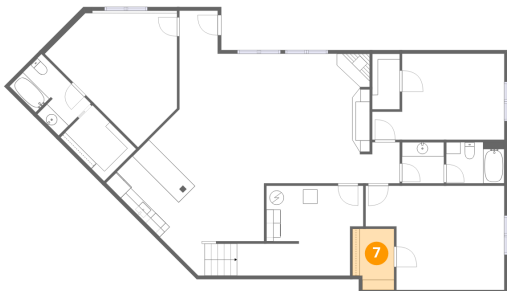
6 Floor 1 - Utility



Dimensions: 13'6" x 12'6"
Area: 157 sq. ft
Counted as living area: No

Heated: Yes
Finished: No
Enclosed: Yes
Contiguous: Yes
Permitted: Yes
Wet space: No
Addition: No
Conversion: No

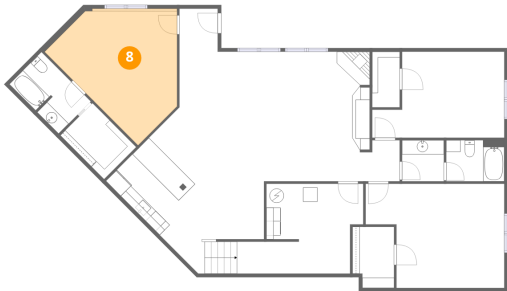
7 Floor 1 - W.I.C.



Dimensions: 5'10" x 8'6"
Area: 47 sq. ft
Counted as living area: Yes

Heated: Yes
Finished: Yes
Enclosed: Yes
Contiguous: Yes
Permitted: Yes
Wet space: No
Addition: No
Conversion: No

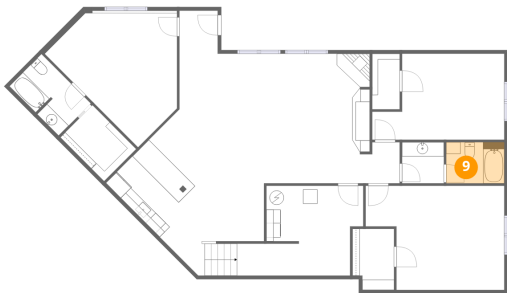
8 Floor 1 - Bedroom



Dimensions: 18'5" x 18'8"
Area: 234 sq. ft
Counted as living area: Yes

Heated: Yes
Finished: Yes
Enclosed: Yes
Contiguous: Yes
Permitted: Yes
Wet space: No
Addition: No
Conversion: No

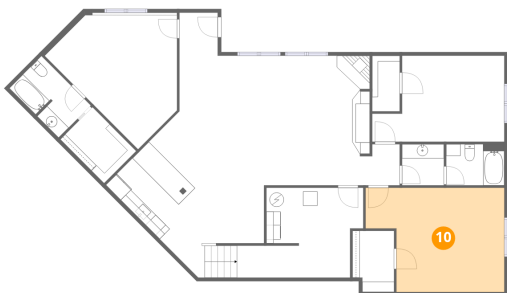
9 Floor 1 - Bath



Dimensions: 8'1" x 5'9"
Area: 46 sq. ft
Counted as living area: Yes

Heated: Yes
Finished: Yes
Enclosed: Yes
Contiguous: Yes
Permitted: Yes
Wet space: Yes
Addition: No
Conversion: No

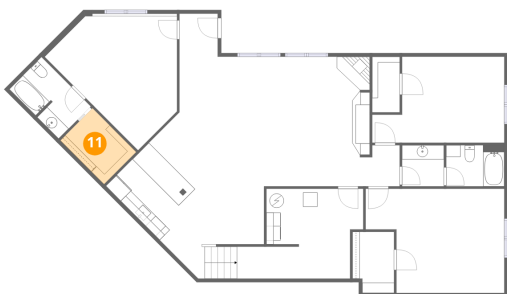
10 Floor 1 - Bedroom



Dimensions: 19'4" x 14'6"
Area: 243 sq. ft
Counted as living area: Yes

Heated: Yes
Finished: Yes
Enclosed: Yes
Contiguous: Yes
Permitted: Yes
Wet space: No
Addition: No
Conversion: No

11 Floor 1 - W.I.C.



Dimensions: 6'3" x 8'10"
Area: 55 sq. ft
Counted as living area: Yes

Heated: Yes
Finished: Yes
Enclosed: Yes
Contiguous: Yes
Permitted: Yes
Wet space: No
Addition: No
Conversion: No

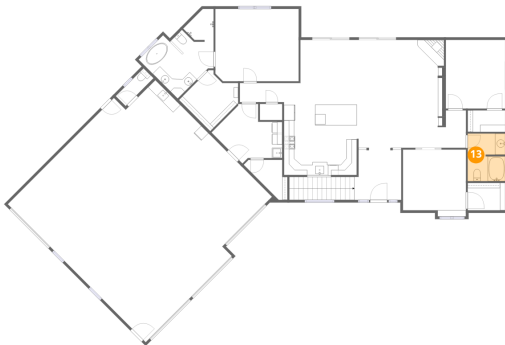
12 Floor 1 - Recreation Room



Dimensions: 33'0" x 36'11"
Area: 689 sq. ft
Counted as living area: Yes

Heated: Yes
Finished: Yes
Enclosed: Yes
Contiguous: Yes
Permitted: Yes
Wet space: No
Addition: No
Conversion: No

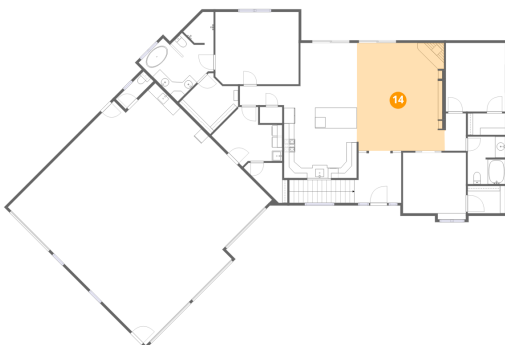
13 Floor 2 - Bath



Dimensions: 7'3" x 9'2"
Area: 66 sq. ft
Counted as living area: Yes

Heated: Yes
Finished: Yes
Enclosed: Yes
Contiguous: Yes
Permitted: Yes
Wet space: Yes
Addition: No
Conversion: No

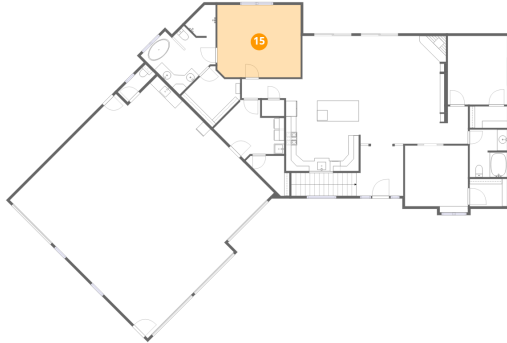
14 Floor 2 - Living Room



Dimensions: 17'2" x 20'10"
Area: 347 sq. ft
Counted as living area: Yes

Heated: Yes
Finished: Yes
Enclosed: Yes
Contiguous: Yes
Permitted: Yes
Wet space: No
Addition: No
Conversion: No

15 Floor 2 - Primary Bedroom



Dimensions: 16'2" x 13'11"
Area: 225 sq. ft
Counted as living area: Yes

Heated: Yes
Finished: Yes
Enclosed: Yes
Contiguous: Yes
Permitted: Yes
Wet space: No
Addition: No
Conversion: No

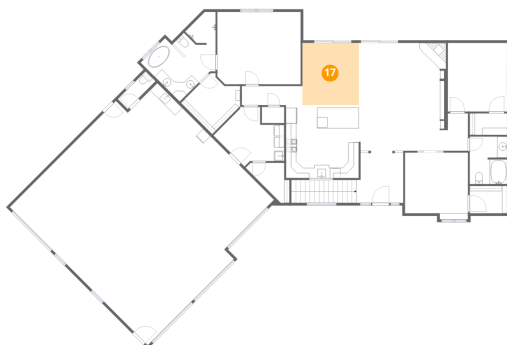
16 Floor 2 - W.I.C.



Dimensions: 7'5" x 7'9"
Area: 39 sq. ft
Counted as living area: Yes

Heated: Yes
Finished: Yes
Enclosed: Yes
Contiguous: Yes
Permitted: Yes
Wet space: No
Addition: No
Conversion: No

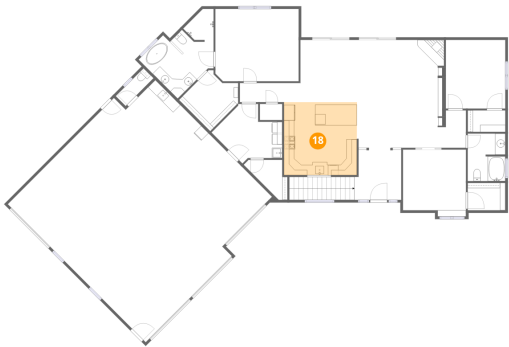
17 Floor 2 - Dining Area



Dimensions: 10'11" x 12'0"
Area: 132 sq. ft
Counted as living area: Yes

Heated: Yes
Finished: Yes
Enclosed: Yes
Contiguous: Yes
Permitted: Yes
Wet space: No
Addition: No
Conversion: No

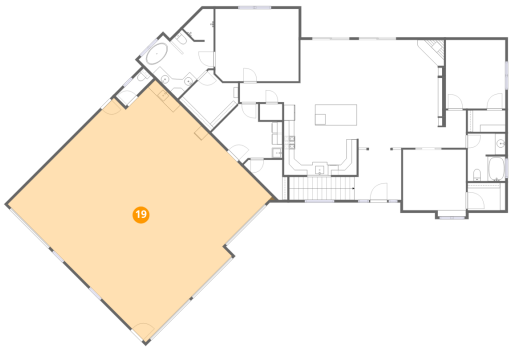
18 Floor 2 - Kitchen



Dimensions: 14'1" x 14'1"
Area: 199 sq. ft
Counted as living area: Yes

Heated: Yes
Finished: Yes
Enclosed: Yes
Contiguous: Yes
Permitted: Yes
Wet space: No
Addition: No
Conversion: No

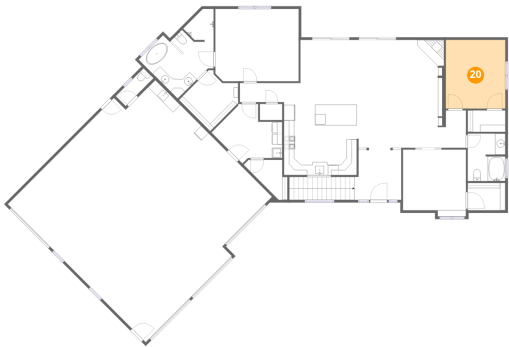
19 Floor 2 - Garage



Dimensions: 37'6" x 37'11"
Area: 1342 sq. ft
Counted as living area: No

Heated: No
Finished: No
Enclosed: Yes
Contiguous: Yes
Permitted: Yes
Wet space: No
Addition: No
Conversion: No

20 Floor 2 - Bedroom



Dimensions: 11'6" x 13'3"
Area: 153 sq. ft
Counted as living area: Yes

Heated: Yes
Finished: Yes
Enclosed: Yes
Contiguous: Yes
Permitted: Yes
Wet space: No
Addition: No
Conversion: No

21 Floor 2 - Hall



Dimensions: 11'8" x 3'8"
Area: 43 sq. ft
Counted as living area: Yes

Heated: Yes
Finished: Yes
Enclosed: Yes
Contiguous: Yes
Permitted: Yes
Wet space: No
Addition: No
Conversion: No

22 Floor 2 - W.I.C.



Dimensions: 10'4" x 8'8"
Area: 75 sq. ft
Counted as living area: Yes

Heated: Yes
Finished: Yes
Enclosed: Yes
Contiguous: Yes
Permitted: Yes
Wet space: No
Addition: No
Conversion: No

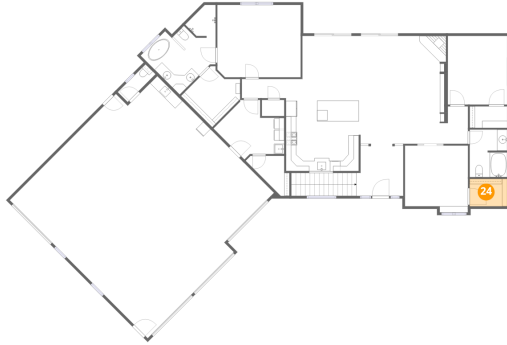
23 Floor 2 - Bath



Dimensions: 3'9" x 3'10"
Area: 21 sq. ft
Counted as living area: No

Heated: Yes
Finished: Yes
Enclosed: Yes
Contiguous: No
Permitted: Yes
Wet space: No
Addition: No
Conversion: No

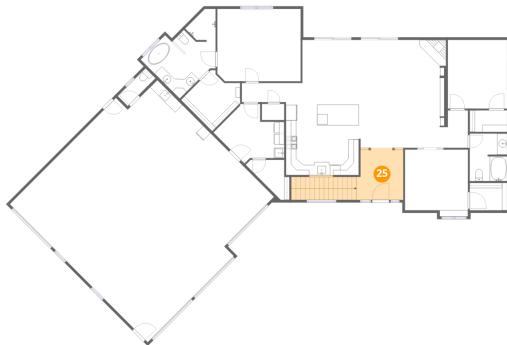
24 Floor 2 - W.I.C.



Dimensions: 7'3" x 5'3"
Area: 39 sq. ft
Counted as living area: Yes

Heated: Yes
Finished: Yes
Enclosed: Yes
Contiguous: Yes
Permitted: Yes
Wet space: No
Addition: No
Conversion: No

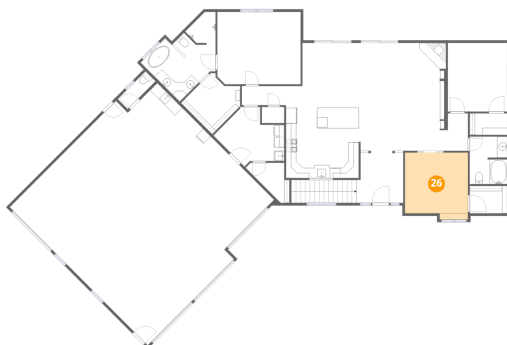
25 Floor 2 - Foyer



Dimensions: 21'8" x 10'0"
Area: 145 sq. ft
Counted as living area: Yes

Heated: Yes
Finished: Yes
Enclosed: Yes
Contiguous: Yes
Permitted: Yes
Wet space: No
Addition: No
Conversion: No

26 Floor 2 - Bedroom



Dimensions: 12'2" x 12'11"
Area: 150 sq. ft
Counted as living area: Yes

Heated: Yes
Finished: Yes
Enclosed: Yes
Contiguous: Yes
Permitted: Yes
Wet space: No
Addition: No
Conversion: No

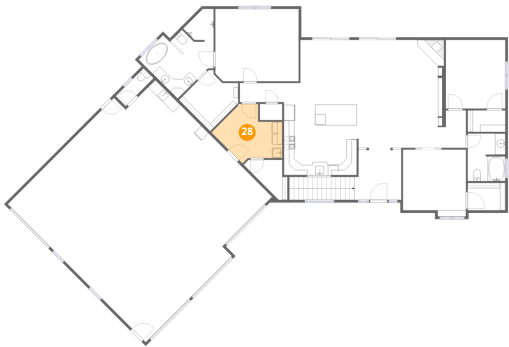
27 Floor 2 - Primary Bath



Dimensions: 17'2" x 10'9"
Area: 135 sq. ft
Counted as living area: Yes

Heated: Yes
Finished: Yes
Enclosed: Yes
Contiguous: Yes
Permitted: Yes
Wet space: Yes
Addition: No
Conversion: No

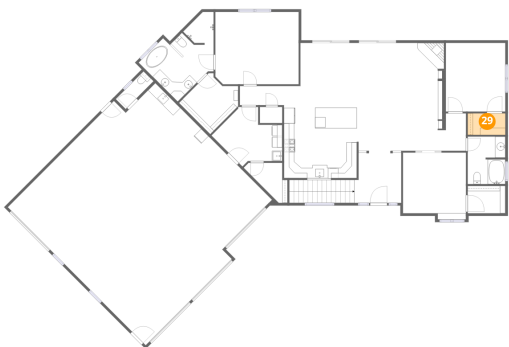
28 Floor 2 - Laundry



Dimensions: 13'8" x 11'6"
Area: 101 sq. ft
Counted as living area: Yes

Heated: Yes
Finished: Yes
Enclosed: Yes
Contiguous: Yes
Permitted: Yes
Wet space: No
Addition: No
Conversion: No

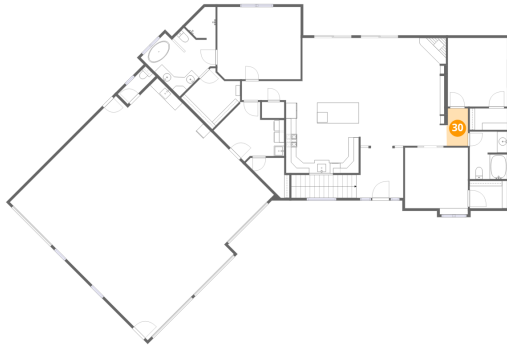
29 Floor 2 - W.I.C.



Dimensions: 7'3" x 4'2"
Area: 30 sq. ft
Counted as living area: Yes

Heated: Yes
Finished: Yes
Enclosed: Yes
Contiguous: Yes
Permitted: Yes
Wet space: No
Addition: No
Conversion: No

30 Floor 2 - Hall



Dimensions: 4'2" x 7'3"
Area: 29 sq. ft
Counted as living area: Yes

Heated: Yes
Finished: Yes
Enclosed: Yes
Contiguous: Yes
Permitted: Yes
Wet space: No
Addition: No
Conversion: No