


Home report


10155 Acton Rd,Sunderland,ON,CA




Property summary




2
Garages



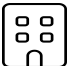
3
Bedrooms




2
Bathrooms




0
Half baths



3
Floors



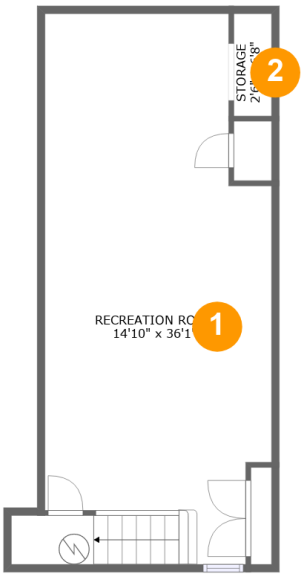
2,771
Gross living
area sqft



5,631
Total sqft

Home report

10155 Acton Rd,Sunderland,ON,CA



Room dimensions

Floor 1 Total sqft: 596 Living area: 575

#		Dimensions	sqft	Counted as living area
1	Recreation Room	14'10" x 36'1"	481 sq. ft	Yes
2	Storage	2'6" x 6'8"	17 sq. ft	No

Home report

10155 Acton Rd,Sunderland,ON,CA



Room dimensions

Floor 2 Total sqft: 3088 Living area: 1616

#		Dimensions	sqft	Counted as living area
3	Living Room	19'3" x 23'1"	397 sq. ft	Yes
4	Hall	6'0" x 3'3"	19 sq. ft	Yes
5	Hall	17'1" x 11'9"	200 sq. ft	Yes
6	Garage	23'2" x 33'0"	765 sq. ft	No
7	Kitchen	17'1" x 12'6"	213 sq. ft	Yes
8	Laundry	12'4" x 11'3"	139 sq. ft	Yes
9	Dining Area	17'1" x 13'1"	221 sq. ft	Yes
10	Bath	9'5" x 7'8"	65 sq. ft	Yes
11	Covered Deck	6'4" x 19'5"	146 sq. ft	No
12	Primary Bedroom	18'4" x 11'6"	195 sq. ft	Yes
13	Garage	23'2" x 19'10"	454 sq. ft	No

Home report

10155 Acton Rd,Sunderland,ON,CA

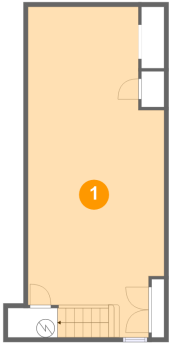


Room dimensions

Floor 3 Total sqft: 1947 Living area: 580

#		Dimensions	sqft	Counted as living area
14	Bedroom	13'4" x 16'6"	196 sq. ft	Yes
15	Attic	23'2" x 20'0"	224 sq. ft	No
16	Attic	23'2" x 30'1"	341 sq. ft	No
17	Bath	7'3" x 6'6"	43 sq. ft	Yes
18	Hall	7'3" x 3'10"	52 sq. ft	Yes
19	Storage	13'0" x 4'10"	62 sq. ft	No
20	Bedroom	13'2" x 16'6"	183 sq. ft	Yes

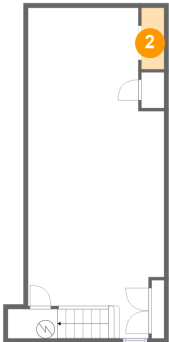
1 Floor 1 - Recreation Room



Dimensions: 14'10" x 36'1"
Area: 481 sq. ft
Counted as living area: Yes

Heated: Yes
Finished: Yes
Enclosed: Yes
Contiguous: Yes
Permitted: Yes
Wet space: No
Addition: No
Conversion: No

2 Floor 1 - Storage



Dimensions: 2'6" x 6'8"
Area: 17 sq. ft
Counted as living area: No

Heated: No
Finished: No
Enclosed: No
Contiguous: Yes
Permitted: Yes
Wet space: No
Addition: No
Conversion: No

3 Floor 2 - Living Room



Dimensions: 19'3" x 23'1"
Area: 397 sq. ft
Counted as living area: Yes

Heated: Yes
Finished: Yes
Enclosed: Yes
Contiguous: Yes
Permitted: Yes
Wet space: No
Addition: No
Conversion: No

4 Floor 2 - Hall



Dimensions: 6'0" x 3'3"
Area: 19 sq. ft
Counted as living area: Yes

Heated: Yes
Finished: Yes
Enclosed: Yes
Contiguous: Yes
Permitted: Yes
Wet space: No
Addition: No
Conversion: No

5 Floor 2 - Hall



Dimensions: 17'1" x 11'9"
Area: 200 sq. ft
Counted as living area: Yes

Heated: Yes
Finished: Yes
Enclosed: Yes
Contiguous: Yes
Permitted: Yes
Wet space: No
Addition: No
Conversion: No

6 Floor 2 - Garage



Dimensions: 23'2" x 33'0"
Area: 765 sq. ft
Counted as living area: No

Heated: No
Finished: No
Enclosed: Yes
Contiguous: Yes
Permitted: Yes
Wet space: No
Addition: No
Conversion: No

7 Floor 2 - Kitchen



Dimensions: 17'1" x 12'6"
Area: 213 sq. ft
Counted as living area: Yes

Heated: Yes
Finished: Yes
Enclosed: Yes
Contiguous: Yes
Permitted: Yes
Wet space: No
Addition: No
Conversion: No

8 Floor 2 - Laundry



Dimensions: 12'4" x 11'3"
Area: 139 sq. ft
Counted as living area: Yes

Heated: Yes
Finished: Yes
Enclosed: Yes
Contiguous: Yes
Permitted: Yes
Wet space: No
Addition: No
Conversion: No

9 Floor 2 - Dining Area



Dimensions: 17'1" x 13'1"
Area: 221 sq. ft
Counted as living area: Yes

Heated: Yes
Finished: Yes
Enclosed: Yes
Contiguous: Yes
Permitted: Yes
Wet space: No
Addition: No
Conversion: No

10 Floor 2 - Bath



Dimensions: 9'5" x 7'8"
Area: 65 sq. ft
Counted as living area: Yes

Heated: Yes
Finished: Yes
Enclosed: Yes
Contiguous: Yes
Permitted: Yes
Wet space: Yes
Addition: No
Conversion: No

11 Floor 2 - Covered Deck



Dimensions: 6'4" x 19'5"
Area: 146 sq. ft
Counted as living area: No

Heated: No
Finished: Yes
Enclosed: No
Contiguous: Yes
Permitted: Yes
Wet space: No
Addition: No
Conversion: No

12 Floor 2 - Primary Bedroom



Dimensions: 18'4" x 11'6"
Area: 195 sq. ft
Counted as living area: Yes

Heated: Yes
Finished: Yes
Enclosed: Yes
Contiguous: Yes
Permitted: Yes
Wet space: No
Addition: No
Conversion: No

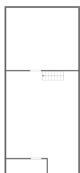
13 Floor 2 - Garage



Dimensions: 23'2" x 19'10"
Area: 454 sq. ft
Counted as living area: No

Heated: No
Finished: No
Enclosed: Yes
Contiguous: Yes
Permitted: Yes
Wet space: No
Addition: No
Conversion: No

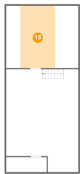
14 Floor 3 - Bedroom



Dimensions: 13'4" x 16'6"
Area: 196 sq. ft
Counted as living area: Yes

Heated: Yes
Finished: Yes
Enclosed: Yes
Contiguous: Yes
Permitted: Yes
Wet space: No
Addition: No
Conversion: No

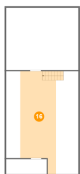
15 Floor 3 - Attic



Dimensions: 23'2" x 20'0"
Area: 224 sq. ft
Counted as living area: No

Heated: No
Finished: No
Enclosed: Yes
Contiguous: Yes
Permitted: Yes
Wet space: No
Addition: No
Conversion: No

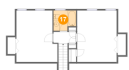
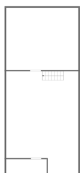
16 Floor 3 - Attic



Dimensions: 23'2" x 30'1"
Area: 341 sq. ft
Counted as living area: No

Heated: No
Finished: No
Enclosed: Yes
Contiguous: Yes
Permitted: Yes
Wet space: No
Addition: No
Conversion: No

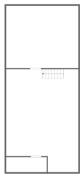
17 Floor 3 - Bath



Dimensions: 7'3" x 6'6"
Area: 43 sq. ft
Counted as living area: Yes

Heated: Yes
Finished: Yes
Enclosed: Yes
Contiguous: Yes
Permitted: Yes
Wet space: Yes
Addition: No
Conversion: No

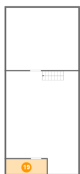
18 Floor 3 - Hall



Dimensions: 7'3" x 3'10"
Area: 52 sq. ft
Counted as living area: Yes

Heated: Yes
Finished: Yes
Enclosed: Yes
Contiguous: Yes
Permitted: Yes
Wet space: No
Addition: No
Conversion: No

19 Floor 3 - Storage



Dimensions: 13'0" x 4'10"
Area: 62 sq. ft
Counted as living area: No

Heated: No
Finished: No
Enclosed: No
Contiguous: Yes
Permitted: Yes
Wet space: No
Addition: No
Conversion: No

20 Floor 3 - Bedroom



Dimensions: 13'2" x 16'6"
Area: 183 sq. ft
Counted as living area: Yes

Heated: Yes
Finished: Yes
Enclosed: Yes
Contiguous: Yes
Permitted: Yes
Wet space: No
Addition: No
Conversion: No