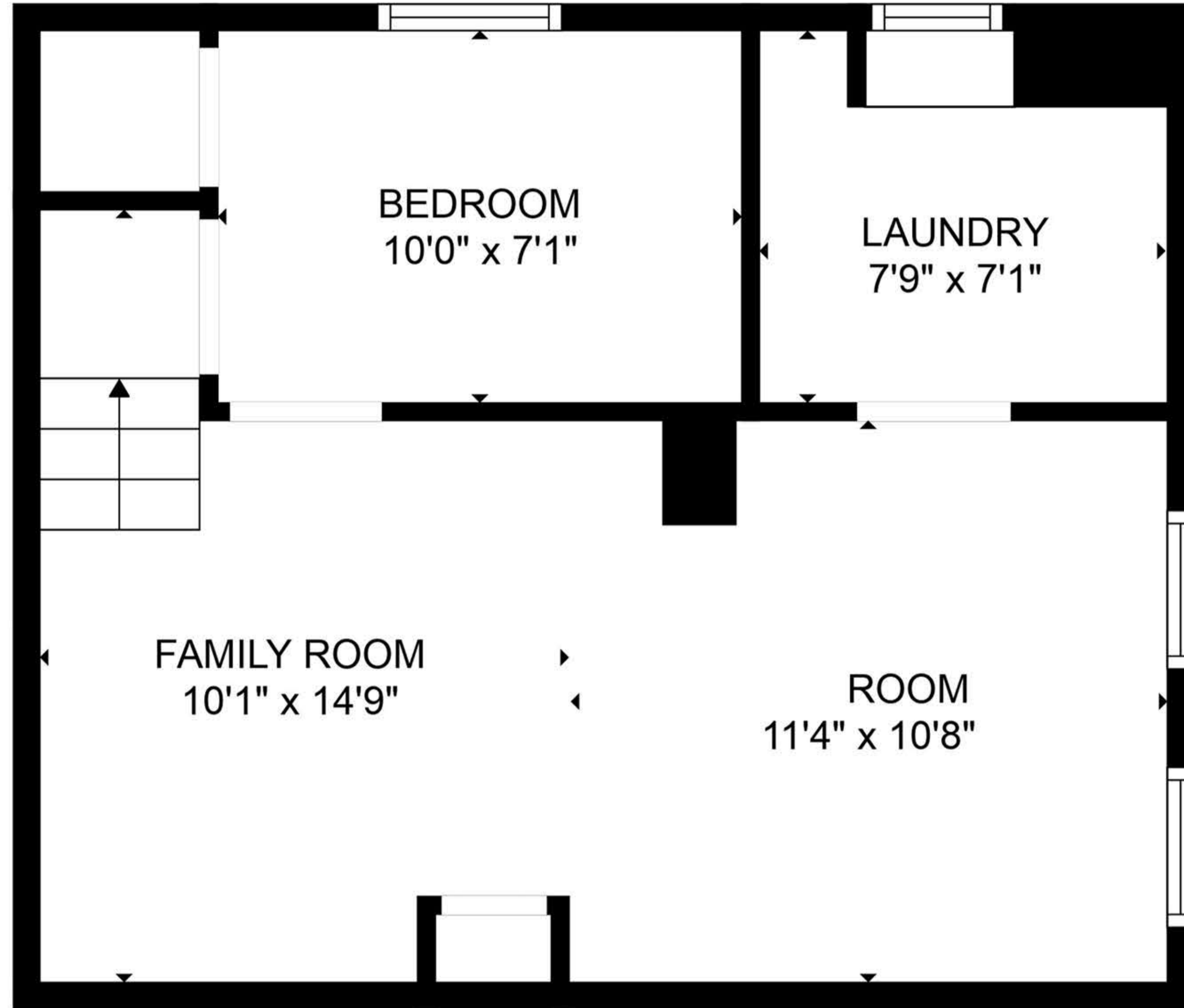
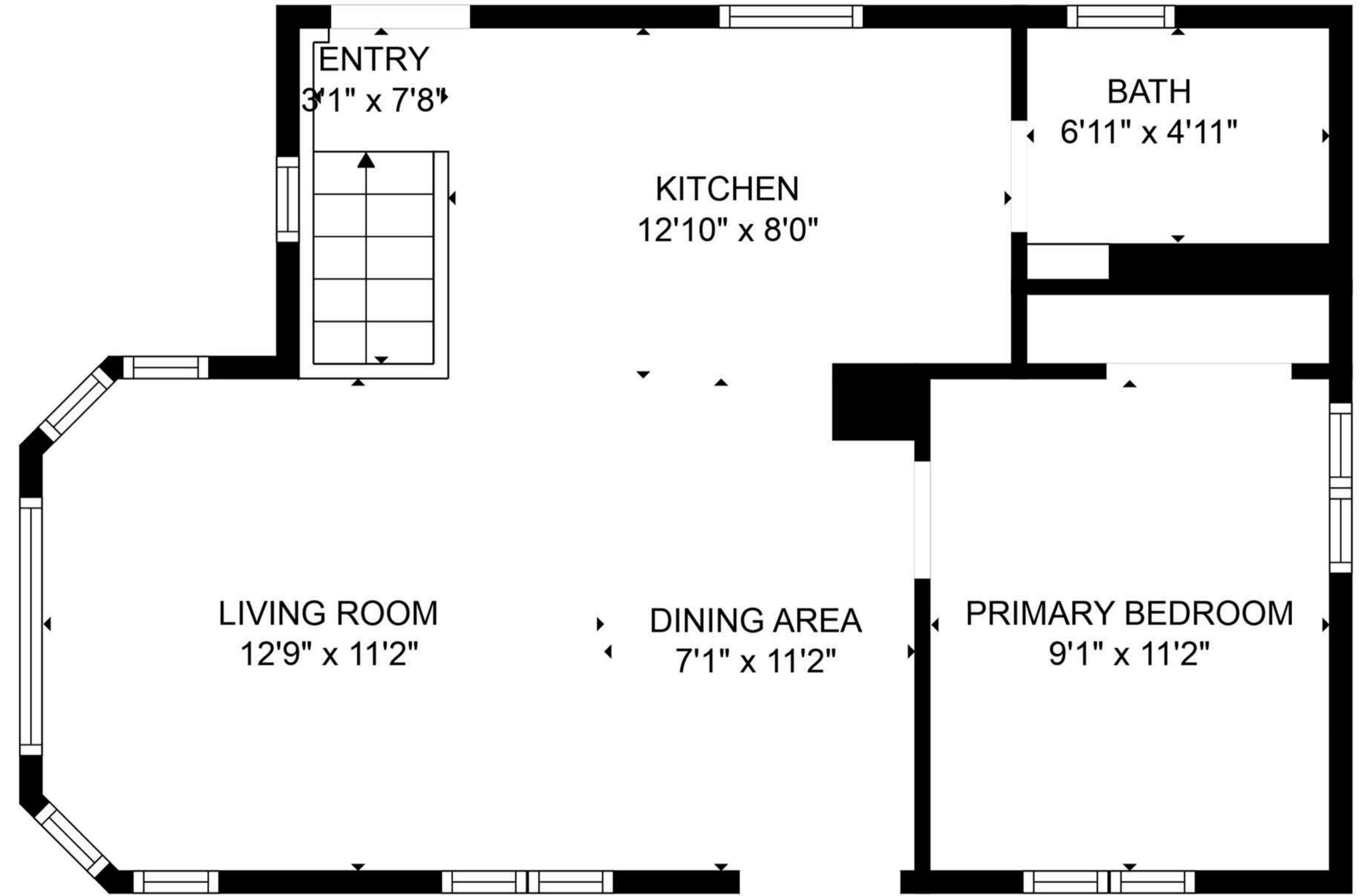


1229 Jackson St

Missoula, MT 59802

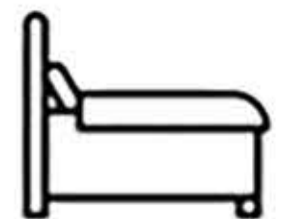


FLOOR 1



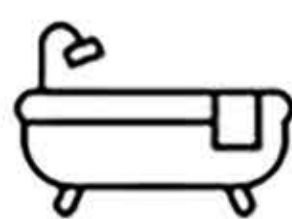
FLOOR 2

1



BEDROOMS

1



BATHROOMS

1038



TOTAL SQ.FT.

Measurements are approximate and may not be to scale.

The floor plan illustration is not suitable for construction/architectural purposes.

This communication is not intended to cause or induce breach of an existing agency agreement.

