


Home report

116 Bison Court, Buffalo Township, Freeport, Butler
County, Pennsylvania, United States, 16229



Property summary

 **1** Garages

 **3** Bedrooms

 **2** Bathrooms

 **1** Half baths

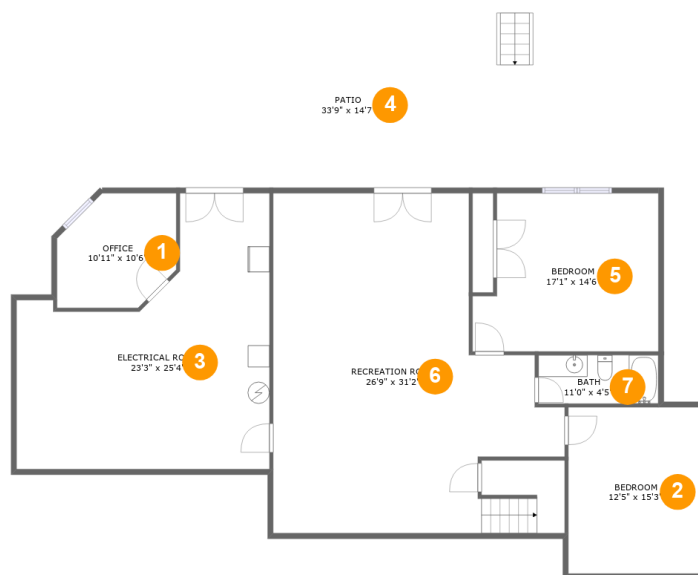
 **2** Floors

 **3,190**
Gross living
area sqft

 **5,491**
Total sqft

Scan captured on Fri, 24 Jan 2025 18:44:25 GMT

Information is calculated by **LIDAR** technology deemed highly reliable but not guaranteed.



Room dimensions

Floor 1

Total sqft: 2344 Living area: 1268

#		Dimensions	sqft	Counted as living area
1	Office	10'11" x 10'6"	100 sq. ft	No
2	Bedroom	12'5" x 15'3"	189 sq. ft	Yes
3	Electrical Room	23'3" x 25'4"	436 sq. ft	No
4	Patio	33'9" x 14'7"	498 sq. ft	No
5	Bedroom	17'1" x 14'6"	227 sq. ft	Yes
6	Recreation Room	26'9" x 31'2"	686 sq. ft	Yes
7	Bath	11'0" x 4'5"	49 sq. ft	Yes



Room dimensions

Floor 2

Total sqft: 3147 Living area: 1922

#		Dimensions	sqft	Counted as living area
8	WC	4'8" x 6'9"	29 sq. ft	Yes
9	Primary Bedroom	14'2" x 22'3"	265 sq. ft	Yes
10	Screened Porch	15'5" x 13'10"	211 sq. ft	No
11	Garage	23'1" x 22'7"	499 sq. ft	No
12	Laundry	10'8" x 5'9"	61 sq. ft	Yes
13	W.I.C.	4'1" x 6'9"	28 sq. ft	Yes
14	Living Room	18'7" x 19'7"	358 sq. ft	Yes
15	Breakfast Nook	9'7" x 13'8"	115 sq. ft	Yes
16	Hall	12'3" x 8'5"	81 sq. ft	Yes
17	Deck	18'5" x 13'7"	248 sq. ft	No
18	Dining Area	11'2" x 14'3"	150 sq. ft	Yes

Home report

**116 Bison Court, Buffalo Township, Freeport, Butler
County, Pennsylvania, United States, 16229**

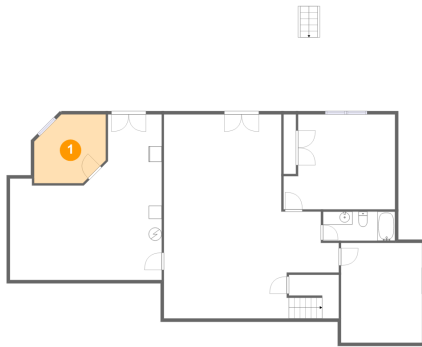


#		Dimensions	sqft	Counted as living area
19	Office	14'7" x 11'5"	117 sq. ft	Yes
20	Kitchen	12'7" x 21'1"	214 sq. ft	Yes
21	WC	3'1" x 5'2"	16 sq. ft	Yes
22	Porch	26'7" x 8'1"	215 sq. ft	No
23	Foyer	13'0" x 14'3"	173 sq. ft	Yes
24	Primary Bath	12'5" x 12'4"	126 sq. ft	Yes

Scan captured on Fri, 24 Jan 2025 18:44:25 GMT

Information is calculated by **LIDAR** technology deemed highly reliable but not guaranteed.

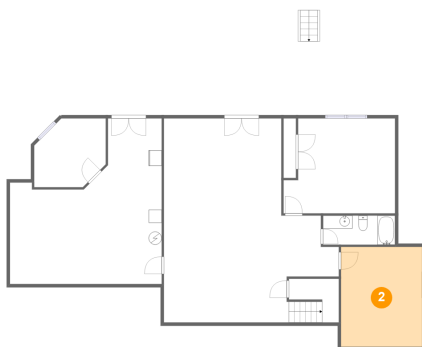
1 Floor 1 - Office



Dimensions: 10'11" x 10'6"
Area: 100 sq. ft
Counted as living area: No

Heated: Yes
Finished: Yes
Enclosed: Yes
Contiguous: No
Permitted: Yes
Wet space: No
Addition: No
Conversion: No

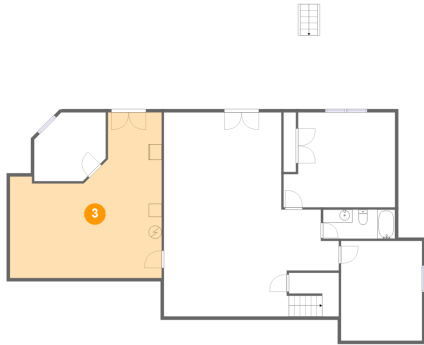
2 Floor 1 - Bedroom



Dimensions: 12'5" x 15'3"
Area: 189 sq. ft
Counted as living area: Yes

Heated: Yes
Finished: Yes
Enclosed: Yes
Contiguous: Yes
Permitted: Yes
Wet space: No
Addition: No
Conversion: No

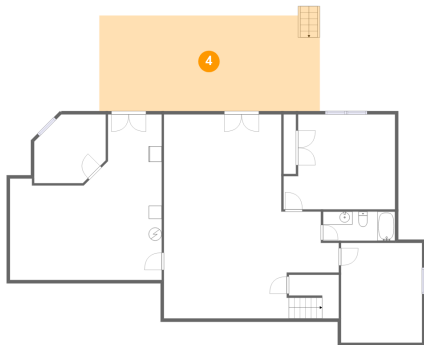
3 Floor 1 - Electrical Room



Dimensions: 23'3" x 25'4"
Area: 436 sq. ft
Counted as living area: No

Heated: No
Finished: No
Enclosed: Yes
Contiguous: Yes
Permitted: Yes
Wet space: No
Addition: No
Conversion: No

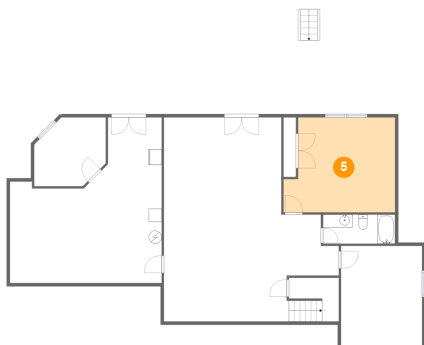
4 Floor 1 - Patio



Dimensions: 33'9" x 14'7"
Area: 498 sq. ft
Counted as living area: No

Heated: No
Finished: Yes
Enclosed: No
Contiguous: Yes
Permitted: Yes
Wet space: No
Addition: No
Conversion: No

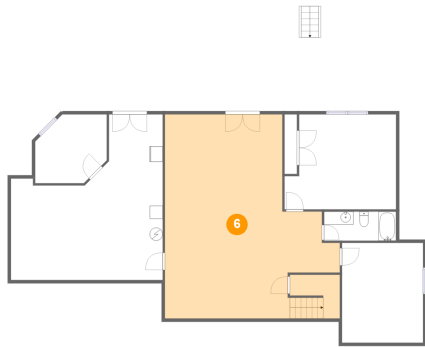
5 Floor 1 - Bedroom



Dimensions: 17'1" x 14'6"
Area: 227 sq. ft
Counted as living area: Yes

Heated: Yes
Finished: Yes
Enclosed: Yes
Contiguous: Yes
Permitted: Yes
Wet space: No
Addition: No
Conversion: No

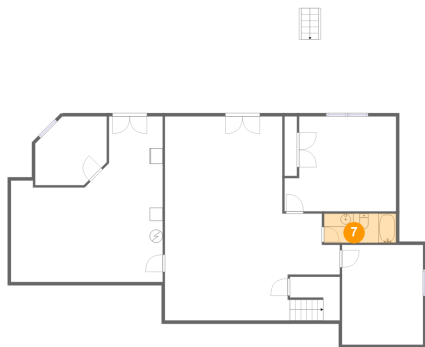
6 Floor 1 - Recreation Room



Dimensions: 26'9" x 31'2"
Area: 686 sq. ft
Counted as living area: Yes

Heated: Yes
Finished: Yes
Enclosed: Yes
Contiguous: Yes
Permitted: Yes
Wet space: No
Addition: No
Conversion: No

7 Floor 1 - Bath



Dimensions: 11'0" x 4'5"
Area: 49 sq. ft
Counted as living area: Yes

Heated: Yes
Finished: Yes
Enclosed: Yes
Contiguous: Yes
Permitted: Yes
Wet space: Yes
Addition: No
Conversion: No

8 Floor 2 - WC



Dimensions: 4'8" x 6'9"
Area: 29 sq. ft
Counted as living area: Yes

Heated: Yes
Finished: Yes
Enclosed: Yes
Contiguous: Yes
Permitted: Yes
Wet space: Yes
Addition: No
Conversion: No

9 Floor 2 - Primary Bedroom



Dimensions: 14'2" x 22'3"
Area: 265 sq. ft
Counted as living area: Yes

Heated: Yes
Finished: Yes
Enclosed: Yes
Contiguous: Yes
Permitted: Yes
Wet space: No
Addition: No
Conversion: No

10 Floor 2 - Screened Porch



Dimensions: 15'5" x 13'10"
Area: 211 sq. ft
Counted as living area: No

Heated: No
Finished: Yes
Enclosed: No
Contiguous: Yes
Permitted: Yes
Wet space: No
Addition: No
Conversion: No

11 Floor 2 - Garage



Dimensions: 23'1" x 22'7"
Area: 499 sq. ft
Counted as living area: No

Heated: No
Finished: No
Enclosed: Yes
Contiguous: Yes
Permitted: Yes
Wet space: No
Addition: No
Conversion: No

12 Floor 2 - Laundry



Dimensions: 10'8" x 5'9"
Area: 61 sq. ft
Counted as living area: Yes

Heated: Yes
Finished: Yes
Enclosed: Yes
Contiguous: Yes
Permitted: Yes
Wet space: No
Addition: No
Conversion: No

13 Floor 2 - W.I.C.



Dimensions: 4'1" x 6'9"
Area: 28 sq. ft
Counted as living area: Yes

Heated: Yes
Finished: Yes
Enclosed: Yes
Contiguous: Yes
Permitted: Yes
Wet space: No
Addition: No
Conversion: No

14 Floor 2 - Living Room



Dimensions: 18'7" x 19'7"
Area: 358 sq. ft
Counted as living area: Yes

Heated: Yes
Finished: Yes
Enclosed: Yes
Contiguous: Yes
Permitted: Yes
Wet space: No
Addition: No
Conversion: No

15 Floor 2 - Breakfast Nook



Dimensions: 9'7" x 13'8"
Area: 115 sq. ft
Counted as living area: Yes

Heated: Yes
Finished: Yes
Enclosed: Yes
Contiguous: Yes
Permitted: Yes
Wet space: No
Addition: No
Conversion: No

16 Floor 2 - Hall



Dimensions: 12'3" x 8'5"
Area: 81 sq. ft
Counted as living area: Yes

Heated: Yes
Finished: Yes
Enclosed: Yes
Contiguous: Yes
Permitted: Yes
Wet space: No
Addition: No
Conversion: No

17 Floor 2 - Deck



Dimensions: 18'5" x 13'7"
Area: 248 sq. ft
Counted as living area: No

Heated: No
Finished: Yes
Enclosed: No
Contiguous: Yes
Permitted: Yes
Wet space: No
Addition: No
Conversion: No

18 Floor 2 - Dining Area



Dimensions: 11'2" x 14'3"
Area: 150 sq. ft
Counted as living area: Yes

Heated: Yes
Finished: Yes
Enclosed: Yes
Contiguous: Yes
Permitted: Yes
Wet space: No
Addition: No
Conversion: No

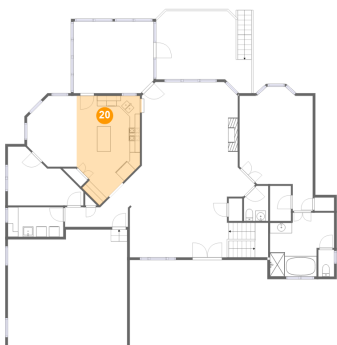
19 Floor 2 - Office



Dimensions: 14'7" x 11'5"
Area: 117 sq. ft
Counted as living area: Yes

Heated: Yes
Finished: Yes
Enclosed: Yes
Contiguous: Yes
Permitted: Yes
Wet space: No
Addition: No
Conversion: No

20 Floor 2 - Kitchen



Dimensions: 12'7" x 21'1"
Area: 214 sq. ft
Counted as living area: Yes

Heated: Yes
Finished: Yes
Enclosed: Yes
Contiguous: Yes
Permitted: Yes
Wet space: No
Addition: No
Conversion: No

21 Floor 2 - WC



Dimensions: 3'1" x 5'2"
Area: 16 sq. ft
Counted as living area: Yes

Heated: Yes
Finished: Yes
Enclosed: Yes
Contiguous: Yes
Permitted: Yes
Wet space: Yes
Addition: No
Conversion: No

22 Floor 2 - Porch



Dimensions: 26'7" x 8'1"
Area: 215 sq. ft
Counted as living area: No

Heated: No
Finished: Yes
Enclosed: No
Contiguous: Yes
Permitted: Yes
Wet space: No
Addition: No
Conversion: No

23 Floor 2 - Foyer



Dimensions: 13'0" x 14'3"
Area: 173 sq. ft
Counted as living area: Yes

Heated: Yes
Finished: Yes
Enclosed: Yes
Contiguous: Yes
Permitted: Yes
Wet space: No
Addition: No
Conversion: No

24 Floor 2 - Primary Bath



Dimensions: 12'5" x 12'4"
Area: 126 sq. ft
Counted as living area: Yes

Heated: Yes
Finished: Yes
Enclosed: Yes
Contiguous: Yes
Permitted: Yes
Wet space: Yes
Addition: No
Conversion: No