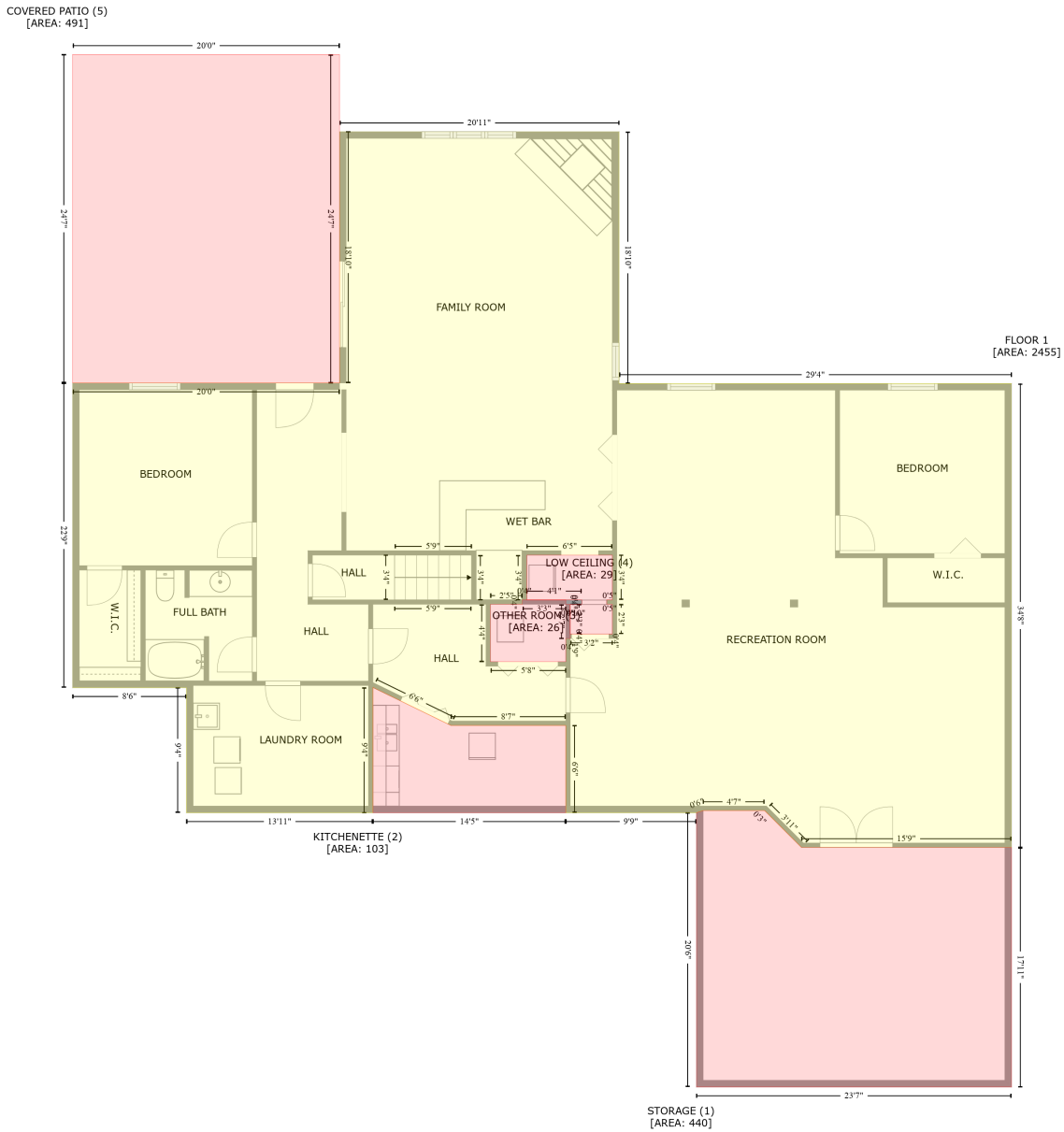


303 Biscayne Estates Drive, Shiloh, St. Clair County, Illinois, United States, 62221

Gross Living Area: 3055 sq. ft



Space

Area (sq. ft)

Calculation Coordinate Polygon Area Algorithm using inches

FLOOR 1
(Living area)

2455

$-\left((646 + 646) * (159.2 - 385.1) + (646 + 998.3) * (385.1 - 385.1) + (998.3 + 998.3) * (385.1 - 801.5) + (998.3 + 809.8) * (801.5 - 801.5) + (809.8 + 776.6) * (801.5 - 768.4) + (776.6 + 721.5) * (768.4 - 768.4) + (721.5 + 715.5) * (768.4 - 770.4) + (715.5 + 598.2) * (770.4 - 770.4) + (598.2 + 598.2) * (770.4 - 692) + (598.2 + 495.1) * (692 - 692) + (495.1 + 425) * (692 - 657.9) + (425 + 425) * (657.9 - 770.4) + (425 + 257.6) * (770.4 - 770.4) + (257.6 + 257.6) * (770.4 - 658.2) + (257.6 + 155.4) * (658.2 - 658.2) + (155.4 + 155.4) * (658.2 - 384.7) + (155.4 + 395) * (384.7 - 384.7) + (395 + 395) * (384.7 - 159.2) + (395 + 646) * (159.2 - 159.2)\right) * 0.5 * 0.00694 + -((640 +$

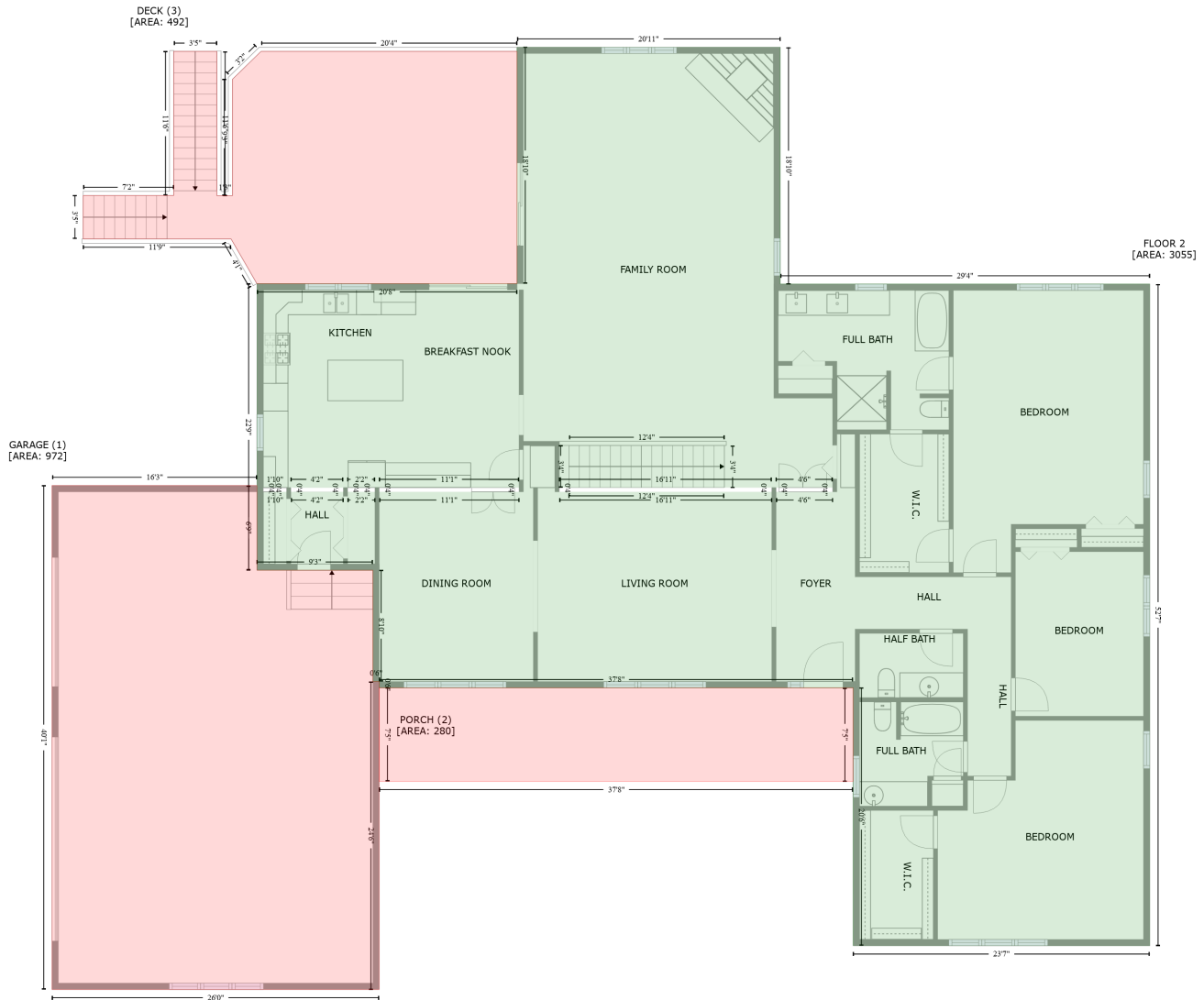
303 Biscayne Estates Drive, Shiloh, St. Clair County, Illinois, United States, 62221

Gross Living Area: 3055 sq. ft

Space	Area (sq. ft)	Calculation <small>Coordinate Polygon Area Algorithm using inches</small>
		$563.2 * (539.1 - 539.1) + (563.2 + 563.2) * (539.1 - 579.3) + (563.2 + 559.2) * (579.3 - 579.3) + (559.2 + 559.2) * (579.3 - 583.3) + (559.2 + 530.5) * (583.3 - 583.3) + (530.5 + 530.5) * (583.3 - 634.8) + (530.5 + 598.2) * (634.8 - 634.8) + (598.2 + 598.2) * (634.8 - 614) + (598.2 + 602.2) * (614 - 614) + (602.2 + 602.2) * (614 - 610) + (602.2 + 640) * (610 - 610) + (640 + 640) * (610 - 583.3) + (640 + 634.9) * (583.3 - 583.3) + (634.9 + 634.9) * (583.3 - 579.3) + (634.9 + 640) * (579.3 - 579.3) + (640 + 640) * (579.3 - 539.1) * 0.5 * 0.00694$
STORAGE (Non-living area)	440	$-((776.6 + 778.7) * (768.4 - 770.4) + (778.7 + 809.8) * (770.4 - 801.5) + (809.8 + 998.3) * (801.5 - 801.5) + (998.3 + 998.3) * (801.5 - 1016.4) + (998.3 + 715.5) * (1016.4 - 1016.4) + (715.5 + 715.5) * (1016.4 - 770.4) + (715.5 + 721.5) * (770.4 - 768.4) + (721.5 + 776.6) * (768.4 - 768.4)) * 0.5 * 0.00694$
KITCHENETTE (Non-living area)	103	$-((425 + 495.1) * (657.9 - 692) + (495.1 + 598.2) * (692 - 692) + (598.2 + 598.2) * (692 - 770.4) + (598.2 + 425) * (770.4 - 770.4) + (425 + 425) * (770.4 - 657.9)) * 0.5 * 0.00694$
OTHER ROOM (Non-living area)	26	$-((598.2 + 598.2) * (579.3 - 583.3) + (598.2 + 602.2) * (583.3 - 583.3) + (602.2 + 602.2) * (583.3 - 614) + (602.2 + 598.2) * (614 - 614) + (598.2 + 598.2) * (614 - 634.8) + (598.2 + 530.5) * (634.8 - 634.8) + (530.5 + 530.5) * (634.8 - 583.3) + (530.5 + 559.2) * (583.3 - 583.3) + (559.2 + 559.2) * (583.3 - 579.3) + (559.2 + 598.2) * (579.3 - 579.3)) * 0.5 * 0.00694$
LOW CEILING (Non-living area)	29	$-((640 + 640) * (539.1 - 579.3) + (640 + 634.9) * (579.3 - 579.3) + (634.9 + 634.9) * (579.3 - 583.3) + (634.9 + 640) * (583.3 - 583.3) + (640 + 640) * (583.3 - 610) + (640 + 602.2) * (610 - 610) + (602.2 + 602.2) * (610 - 583.3) + (602.2 + 612.5) * (583.3 - 583.3) + (612.5 + 612.5) * (583.3 - 579.3) + (612.5 + 563.2) * (579.3 - 579.3) + (563.2 + 563.2) * (579.3 - 539.1) + (563.2 + 640) * (539.1 - 539.1)) * 0.5 * 0.00694$
COVERED PATIO (Non-living area)	491	$-((395 + 395) * (89.9 - 384.7) + (395 + 155.4) * (384.7 - 384.7) + (155.4 + 155.4) * (384.7 - 89.9) + (155.4 + 395) * (89.9 - 89.9)) * 0.5 * 0.00694$

303 Biscayne Estates Drive, Shiloh, St. Clair County, Illinois, United States, 62221

Gross Living Area: 3055 sq. ft



Space

Area (sq. ft)

Calculation Coordinate Polygon Area Algorithm using inches

FLOOR 2
(Living area)

3055

$$\begin{aligned}
 & -((639.3 + 639.3) * (146.9 - 372.9) + (639.3 + 991.7) * (372.9 - 372.9) + (991.7 + 991.7) * (372.9 - 1004.2) \\
 & + (991.7 + 708.8) * (1004.2 - 1004.2) + (708.8 + 708.8) * (1004.2 - 758.1) + (708.8 + 256.9) * (758.1 - 758.1) \\
 & + (256.9 + 256.9) * (752.1 - 645.9) + (256.9 + 140.3) * (645.9 - 645.9) + (140.3 + 140.3) * (645.9 - 372.5) \\
 & + (140.3 + 388.3) * (372.5 - 372.5) + (388.3 + 388.3) * (372.5 - 146.9) + (388.3 + 639.3) * (146.9 - 146.9) \\
 & * 0.5 * 0.00694 + -((390.3 + 256.9) * (567.1 - 567.1) + (256.9 + 256.9) * (567.1 - 571.1) + (256.9 + 390.3) * (571.1 - 571.1) \\
 & + (390.3 + 390.3) * (571.1 - 567.1)) * 0.5 * 0.00694 + -((689.3 + 635.3) * (567.1 - 567.1) + (635.3 + 635.3) * (567.1 - 571.1) \\
 & + (635.3 + 689.3) * (571.1 - 571.1) + (689.3 + 689.3) * (571.1 - 567.1)) * 0.5 * 0.00694 + -((631.3 + 428.6) * (567.1 - 567.1) \\
 & + (428.6 + 428.6) * (567.1 - 571.1) + (428.6 + 631.3) * (571.1 - 571.1) + (631.3 + 631.3) * (571.1 - 567.1)) * 0.5 * 0.00694 \\
 & + -((168.7 + 146.3) * (567.1 - 567.1) + (146.3 + 146.3) * (567.1 - 571.1) +
 \end{aligned}$$

303 Biscayne Estates Drive, Shiloh, St. Clair County, Illinois, United States, 62221

Gross Living Area: 3055 sq. ft

Space	Area (sq. ft)	Calculation <small>Coordinate Polygon Area Algorithm using inches</small>
		$(146.3 + 168.7) * (571.1 - 571.1) + (168.7 + 168.7) * (571.1 - 567.1) * 0.5 * 0.00694 + -((222.7 + 172.7) * (567.1 - 567.1) + (172.7 + 172.7) * (567.1 - 571.1) + (172.7 + 222.7) * (571.1 - 571.1) + (222.7 + 222.7) * (571.1 - 567.1)) * 0.5 * 0.00694 + -((252.9 + 226.7) * (567.1 - 567.1) + (226.7 + 226.7) * (567.1 - 571.1) + (226.7 + 252.9) * (571.1 - 571.1) + (252.9 + 252.9) * (571.1 - 567.1)) * 0.5 * 0.00694$
GARAGE (Non-living area)	972	$-((140.3 + 140.3) * (565.1 - 645.9) + (140.3 + 250.9) * (645.9 - 645.9) + (250.9 + 250.9) * (645.9 - 752.1) + (250.9 + 256.9) * (752.1 - 752.1) + (256.9 + 256.9) * (752.1 - 1045.9) + (256.9 + -55) * (1045.9 - 1045.9) + (-55 + -55) * (1045.9 - 565.1) + (-55 + 140.3) * (565.1 - 565.1)) * 0.5 * 0.00694$
PORCH (Non-living area)	280	$-((708.8 + 708.8) * (758.1 - 847.3) + (708.8 + 256.9) * (847.3 - 847.3) + (256.9 + 256.9) * (847.3 - 758.1) + (256.9 + 708.8) * (758.1 - 758.1)) * 0.5 * 0.00694$
DECK (Non-living area)	492	$-((102.1 + 102.1) * (150.9 - 288.6) + (102.1 + 117) * (288.6 - 288.6) + (117 + 117) * (288.6 - 177.5) + (117 + 144.2) * (177.5 - 150.9) + (144.2 + 388.3) * (150.9 - 150.9) + (388.3 + 388.3) * (150.9 - 372.5) + (388.3 + 140.3) * (372.5 - 372.5) + (140.3 + 115.7) * (372.5 - 329.9) + (115.7 + -25.3) * (329.9 - 329.9) + (-25.3 + -25.3) * (329.9 - 288.4) + (-25.3 + 61) * (288.4 - 288.4) + (61 + 61) * (288.4 - 150.9) + (61 + 102.1) * (150.9 - 150.9)) * 0.5 * 0.00694$