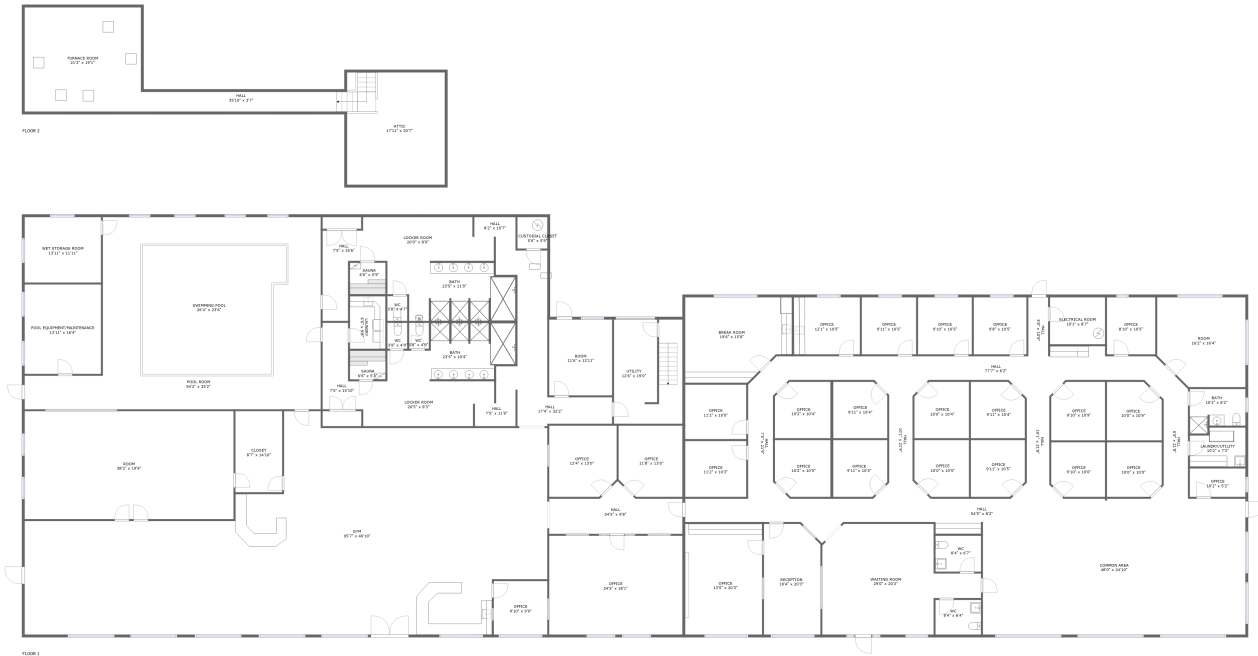



# 2519 Cove Ave, La Grande, OR, US




## Property summary


 **0** Garages

 **0** Bedrooms

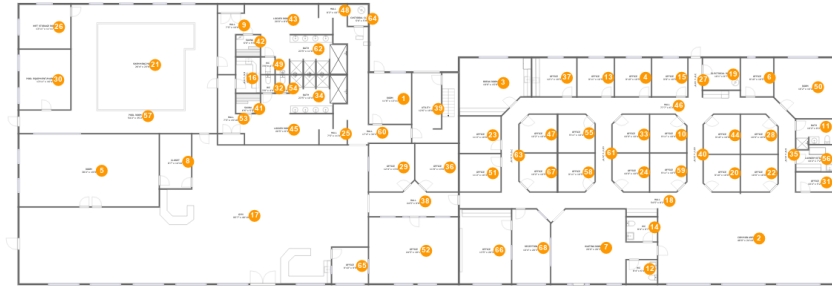
 **3** Bathrooms

 **2** Half baths

 **2** Floors

 **14,439**  
Gross living  
area sqft

 **15,827**  
Total sqft

**2519 Cove Ave, La Grande, OR, US**

## Room dimensions

Floor 1

Total sqft: 14805

Living area: 14439

#		Dimensions	sqft	Counted as living area
1	Room	11'6" x 13'11"	160 sq. ft	Yes
2	Common Area	48'0" x 24'10"	1194 sq. ft	Yes
3	Break Room	19'6" x 15'8"	277 sq. ft	Yes
4	Office	9'10" x 10'5"	103 sq. ft	Yes
5	Room	38'2" x 19'9"	755 sq. ft	Yes
6	Office	8'10" x 10'5"	92 sq. ft	Yes
7	Waiting Room	29'0" x 20'3"	444 sq. ft	Yes
8	Closet	8'7" x 14'10"	127 sq. ft	Yes
9	Hall	7'5" x 16'6"	92 sq. ft	Yes
10	Office	9'11" x 10'4"	97 sq. ft	Yes

**2519 Cove Ave,La Grande,OR,US**

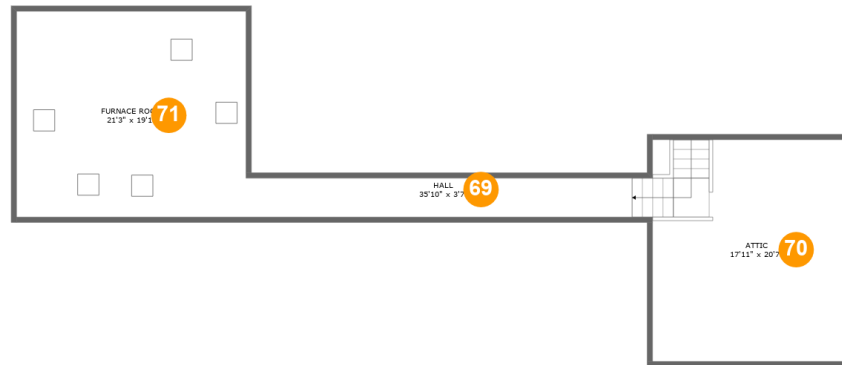
#		Dimensions	sqft	Counted as living area
11	Bath	10'2" x 8'2"	72 sq. ft	Yes
12	WC	8'4" x 6'4"	53 sq. ft	Yes
13	Office	9'11" x 10'5"	104 sq. ft	Yes
14	WC	8'4" x 6'7"	55 sq. ft	Yes
15	Office	9'8" x 10'5"	101 sq. ft	Yes
16	Laundry	6'6" x 9'8"	63 sq. ft	Yes
17	Gym	95'7" x 40'10"	2767 sq. ft	Yes
18	Hall	54'5" x 8'2"	265 sq. ft	Yes
19	Electrical Room	10'1" x 8'7"	87 sq. ft	No
20	Office	9'10" x 10'0"	96 sq. ft	Yes
21	Swimming Pool	26'4" x 23'6"	573 sq. ft	No
22	Office	10'0" x 10'0"	98 sq. ft	Yes
23	Office	11'2" x 10'0"	111 sq. ft	Yes
24	Office	10'0" x 10'5"	99 sq. ft	Yes
25	Hall	7'5" x 11'0"	71 sq. ft	Yes
26	Wet Storage Room	13'11" x 11'11"	167 sq. ft	Yes
27	Hall	3'8" x 10'9"	39 sq. ft	Yes
28	Office	10'0" x 10'9"	102 sq. ft	Yes
29	Office	12'4" x 13'0"	156 sq. ft	Yes
30	Pool EQUIPMENT/ MAINTENANCE	13'11" x 16'4"	228 sq. ft	No
31	Office	10'2" x 5'2"	53 sq. ft	Yes

**2519 Cove Ave,La Grande,OR,US**

#		Dimensions	sqft	Counted as living area
32	WC	3'8" x 4'9"	17 sq. ft	Yes
33	Office	10'0" x 10'4"	99 sq. ft	Yes
34	Bath	23'5" x 10'4"	190 sq. ft	Yes
35	Hall	6'8" x 21'8"	105 sq. ft	Yes
36	Office	11'8" x 13'0"	147 sq. ft	Yes
37	Office	12'1" x 10'5"	126 sq. ft	Yes
38	Hall	24'5" x 9'8"	167 sq. ft	Yes
39	Utility	12'6" x 19'0"	233 sq. ft	Yes
40	Hall	10'1" x 21'8"	107 sq. ft	Yes
41	Sauna	6'6" x 5'3"	34 sq. ft	Yes
42	Sauna	6'6" x 5'9"	38 sq. ft	Yes
43	Locker Room	20'0" x 8'0"	160 sq. ft	Yes
44	Office	9'10" x 10'9"	102 sq. ft	Yes
45	Locker Room	20'5" x 8'3"	167 sq. ft	Yes
46	Hall	77'7" x 6'2"	339 sq. ft	Yes
47	Office	10'2" x 10'4"	101 sq. ft	Yes
48	Hall	8'2" x 10'7"	71 sq. ft	Yes
49	WC	3'8" x 4'7"	17 sq. ft	Yes
50	Room	16'2" x 16'4"	249 sq. ft	Yes
51	Office	11'2" x 10'3"	114 sq. ft	Yes
52	Office	24'5" x 18'1"	441 sq. ft	Yes

**2519 Cove Ave,La Grande,OR,US**

#		Dimensions	sqft	Counted as living area
53	Hall	7'5" x 15'10"	88 sq. ft	Yes
54	WC	3'8" x 4'9"	17 sq. ft	Yes
55	Office	9'11" x 10'4"	99 sq. ft	Yes
56	LAUNDRY/UTILITY	10'2" x 7'2"	67 sq. ft	Yes
57	Pool Room	54'2" x 35'2"	1489 sq. ft	Yes
58	Office	9'11" x 10'5"	99 sq. ft	Yes
59	Office	9'11" x 10'5"	99 sq. ft	Yes
60	Hall	17'4" x 32'2"	234 sq. ft	Yes
61	Hall	10'1" x 21'9"	111 sq. ft	Yes
62	Bath	23'5" x 11'0"	217 sq. ft	Yes
63	Hall	7'5" x 21'9"	108 sq. ft	Yes
64	Custodial Closet	5'6" x 5'9"	32 sq. ft	No
65	Office	9'10" x 9'9"	96 sq. ft	Yes
66	Office	13'5" x 20'3"	285 sq. ft	Yes
67	Office	10'2" x 10'5"	102 sq. ft	Yes
68	Reception	10'4" x 20'3"	202 sq. ft	Yes

**2519 Cove Ave, La Grande, OR, US**

## Room dimensions

Floor 2

Total sqft: 1022

Living area: 0

#		Dimensions	sqft	Counted as living area
69	Hall	35'10" x 3'7"	173 sq. ft	No
70	Attic	17'11" x 20'7"	201 sq. ft	No
71	Furnace Room	21'3" x 19'1"	405 sq. ft	No

## 1 Floor 1 - Room

---



Dimensions: 11'6" x 13'11"  
Area: 160 sq. ft  
Counted as living area: Yes

Heated: Yes  
Finished: Yes  
Enclosed: Yes  
Contiguous: Yes  
Permitted: Yes  
Wet space: No  
Addition: No  
Conversion: No

## 2 Floor 1 - Common Area

---



Dimensions: 48'0" x 24'10"  
Area: 1194 sq. ft  
Counted as living area: Yes

Heated: Yes  
Finished: Yes  
Enclosed: Yes  
Contiguous: Yes  
Permitted: Yes  
Wet space: No  
Addition: No  
Conversion: No

### 3 Floor 1 - Break Room



Dimensions: 19'6" x 15'8"  
Area: 277 sq. ft  
Counted as living area: Yes

Heated: Yes  
Finished: Yes  
Enclosed: Yes  
Contiguous: Yes  
Permitted: Yes  
Wet space: No  
Addition: No  
Conversion: No

### 4 Floor 1 - Office



Dimensions: 9'10" x 10'5"  
Area: 103 sq. ft  
Counted as living area: Yes

Heated: Yes  
Finished: Yes  
Enclosed: Yes  
Contiguous: Yes  
Permitted: Yes  
Wet space: No  
Addition: No  
Conversion: No

### 5 Floor 1 - Room

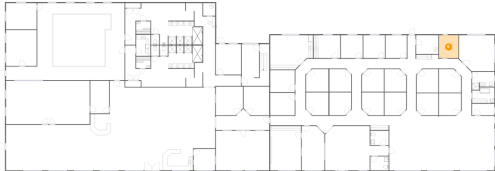


Dimensions: 38'2" x 19'9"  
Area: 755 sq. ft  
Counted as living area: Yes

Heated: Yes  
Finished: Yes  
Enclosed: Yes  
Contiguous: Yes  
Permitted: Yes  
Wet space: No  
Addition: No  
Conversion: No



## 6 Floor 1 - Office



Dimensions: 8'10" x 10'5"  
Area: 92 sq. ft  
Counted as living area: Yes

Heated: Yes  
Finished: Yes  
Enclosed: Yes  
Contiguous: Yes  
Permitted: Yes  
Wet space: No  
Addition: No  
Conversion: No

## 7 Floor 1 - Waiting Room



Dimensions: 29'0" x 20'3"  
Area: 444 sq. ft  
Counted as living area: Yes

Heated: Yes  
Finished: Yes  
Enclosed: Yes  
Contiguous: Yes  
Permitted: Yes  
Wet space: No  
Addition: No  
Conversion: No

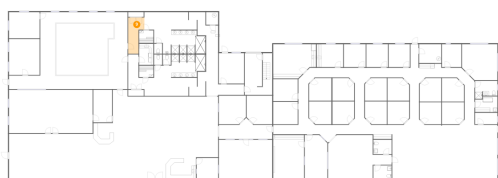
## 8 Floor 1 - Closet



Dimensions: 8'7" x 14'10"  
Area: 127 sq. ft  
Counted as living area: Yes

Heated: Yes  
Finished: Yes  
Enclosed: Yes  
Contiguous: Yes  
Permitted: Yes  
Wet space: No  
Addition: No  
Conversion: No

### 9 Floor 1 - Hall



Dimensions: 7'5" x 16'6"  
Area: 92 sq. ft  
Counted as living area: Yes

Heated: Yes  
Finished: Yes  
Enclosed: Yes  
Contiguous: Yes  
Permitted: Yes  
Wet space: No  
Addition: No  
Conversion: No

### 10 Floor 1 - Office



Dimensions: 9'11" x 10'4"  
Area: 97 sq. ft  
Counted as living area: Yes

Heated: Yes  
Finished: Yes  
Enclosed: Yes  
Contiguous: Yes  
Permitted: Yes  
Wet space: No  
Addition: No  
Conversion: No

### 11 Floor 1 - Bath



Dimensions: 10'2" x 8'2"  
Area: 72 sq. ft  
Counted as living area: Yes

Heated: Yes  
Finished: Yes  
Enclosed: Yes  
Contiguous: Yes  
Permitted: Yes  
Wet space: Yes  
Addition: No  
Conversion: No

**12** Floor 1 - WC



Dimensions: 8'4" x 6'4"  
Area: 53 sq. ft  
Counted as living area: Yes

Heated: Yes  
Finished: Yes  
Enclosed: Yes  
Contiguous: Yes  
Permitted: Yes  
Wet space: Yes  
Addition: No  
Conversion: No

**13** Floor 1 - Office



Dimensions: 9'11" x 10'5"  
Area: 104 sq. ft  
Counted as living area: Yes

Heated: Yes  
Finished: Yes  
Enclosed: Yes  
Contiguous: Yes  
Permitted: Yes  
Wet space: No  
Addition: No  
Conversion: No

**14** Floor 1 - WC



Dimensions: 8'4" x 6'7"  
Area: 55 sq. ft  
Counted as living area: Yes

Heated: Yes  
Finished: Yes  
Enclosed: Yes  
Contiguous: Yes  
Permitted: Yes  
Wet space: No  
Addition: No  
Conversion: No

**15** Floor 1 - Office



**Dimensions:** 9'8" x 10'5"  
**Area:** 101 sq. ft  
**Counted as living area:** Yes

**Heated:** Yes  
**Finished:** Yes  
**Enclosed:** Yes  
**Contiguous:** Yes  
**Permitted:** Yes  
**Wet space:** No  
**Addition:** No  
**Conversion:** No

**16** Floor 1 - Laundry



**Dimensions:** 6'6" x 9'8"  
**Area:** 63 sq. ft  
**Counted as living area:** Yes

**Heated:** Yes  
**Finished:** Yes  
**Enclosed:** Yes  
**Contiguous:** Yes  
**Permitted:** Yes  
**Wet space:** No  
**Addition:** No  
**Conversion:** No

**17** Floor 1 - Gym



**Dimensions:** 95'7" x 40'10"  
**Area:** 2767 sq. ft  
**Counted as living area:** Yes

**Heated:** Yes  
**Finished:** Yes  
**Enclosed:** Yes  
**Contiguous:** Yes  
**Permitted:** Yes  
**Wet space:** No  
**Addition:** No  
**Conversion:** No

**18** Floor 1 - Hall



Dimensions: 54'5" x 8'2"  
Area: 265 sq. ft  
Counted as living area: Yes

Heated: Yes  
Finished: Yes  
Enclosed: Yes  
Contiguous: Yes  
Permitted: Yes  
Wet space: No  
Addition: No  
Conversion: No

**19** Floor 1 - Electrical Room



Dimensions: 10'1" x 8'7"  
Area: 87 sq. ft  
Counted as living area: No

Heated: No  
Finished: No  
Enclosed: Yes  
Contiguous: Yes  
Permitted: Yes  
Wet space: No  
Addition: No  
Conversion: No

**20** Floor 1 - Office



Dimensions: 9'10" x 10'0"  
Area: 96 sq. ft  
Counted as living area: Yes

Heated: Yes  
Finished: Yes  
Enclosed: Yes  
Contiguous: Yes  
Permitted: Yes  
Wet space: No  
Addition: No  
Conversion: No

## 21 Floor 1 - Swimming Pool



Dimensions: 26'4" x 23'6"  
Area: 573 sq. ft  
Counted as living area: No

Heated: No  
Finished: No  
Enclosed: No  
Contiguous: Yes  
Permitted: No  
Wet space: No  
Addition: No  
Conversion: No

## 22 Floor 1 - Office



Dimensions: 10'0" x 10'0"  
Area: 98 sq. ft  
Counted as living area: Yes

Heated: Yes  
Finished: Yes  
Enclosed: Yes  
Contiguous: Yes  
Permitted: Yes  
Wet space: No  
Addition: No  
Conversion: No

## 23 Floor 1 - Office



Dimensions: 11'2" x 10'0"  
Area: 111 sq. ft  
Counted as living area: Yes

Heated: Yes  
Finished: Yes  
Enclosed: Yes  
Contiguous: Yes  
Permitted: Yes  
Wet space: No  
Addition: No  
Conversion: No

# 2519 Cove Ave, La Grande, OR, US

## 24 Floor 1 - Office



**Dimensions:** 10'0" x 10'5"  
**Area:** 99 sq. ft  
**Counted as living area:** Yes

**Heated:** Yes  
**Finished:** Yes  
**Enclosed:** Yes  
**Contiguous:** Yes  
**Permitted:** Yes  
**Wet space:** No  
**Addition:** No  
**Conversion:** No

## 25 Floor 1 - Hall



**Dimensions:** 7'5" x 11'0"  
**Area:** 71 sq. ft  
**Counted as living area:** Yes

**Heated:** Yes  
**Finished:** Yes  
**Enclosed:** Yes  
**Contiguous:** Yes  
**Permitted:** Yes  
**Wet space:** No  
**Addition:** No  
**Conversion:** No

## 26 Floor 1 - Wet Storage Room



**Dimensions:** 13'11" x 11'11"  
**Area:** 167 sq. ft  
**Counted as living area:** Yes

**Heated:** Yes  
**Finished:** Yes  
**Enclosed:** Yes  
**Contiguous:** Yes  
**Permitted:** Yes  
**Wet space:** No  
**Addition:** No  
**Conversion:** No

**27** Floor 1 - Hall



Dimensions: 3'8" x 10'9"  
Area: 39 sq. ft  
Counted as living area: Yes

Heated: Yes  
Finished: Yes  
Enclosed: Yes  
Contiguous: Yes  
Permitted: Yes  
Wet space: No  
Addition: No  
Conversion: No

**28** Floor 1 - Office



Dimensions: 10'0" x 10'9"  
Area: 102 sq. ft  
Counted as living area: Yes

Heated: Yes  
Finished: Yes  
Enclosed: Yes  
Contiguous: Yes  
Permitted: Yes  
Wet space: No  
Addition: No  
Conversion: No

**29** Floor 1 - Office



Dimensions: 12'4" x 13'0"  
Area: 156 sq. ft  
Counted as living area: Yes

Heated: Yes  
Finished: Yes  
Enclosed: Yes  
Contiguous: Yes  
Permitted: Yes  
Wet space: No  
Addition: No  
Conversion: No



**30** Floor 1 - Pool EQUIPMENT/MAINTENANCE



Dimensions: 13'11" x 16'4"  
Area: 228 sq. ft  
Counted as living area: No

Heated: No  
Finished: No  
Enclosed: Yes  
Contiguous: Yes  
Permitted: Yes  
Wet space: No  
Addition: No  
Conversion: No

**31** Floor 1 - Office



Dimensions: 10'2" x 5'2"  
Area: 53 sq. ft  
Counted as living area: Yes

Heated: Yes  
Finished: Yes  
Enclosed: Yes  
Contiguous: Yes  
Permitted: Yes  
Wet space: No  
Addition: No  
Conversion: No

**32** Floor 1 - WC



Dimensions: 3'8" x 4'9"  
Area: 17 sq. ft  
Counted as living area: Yes

Heated: Yes  
Finished: Yes  
Enclosed: Yes  
Contiguous: Yes  
Permitted: Yes  
Wet space: No  
Addition: No  
Conversion: No

# 2519 Cove Ave, La Grande, OR, US

## 33 Floor 1 - Office



Dimensions: 10'0" x 10'4"  
Area: 99 sq. ft  
Counted as living area: Yes

Heated: Yes  
Finished: Yes  
Enclosed: Yes  
Contiguous: Yes  
Permitted: Yes  
Wet space: No  
Addition: No  
Conversion: No

## 34 Floor 1 - Bath



Dimensions: 23'5" x 10'4"  
Area: 190 sq. ft  
Counted as living area: Yes

Heated: Yes  
Finished: Yes  
Enclosed: Yes  
Contiguous: Yes  
Permitted: Yes  
Wet space: Yes  
Addition: No  
Conversion: No

## 35 Floor 1 - Hall



Dimensions: 6'8" x 21'8"  
Area: 105 sq. ft  
Counted as living area: Yes

Heated: Yes  
Finished: Yes  
Enclosed: Yes  
Contiguous: Yes  
Permitted: Yes  
Wet space: No  
Addition: No  
Conversion: No

# 2519 Cove Ave, La Grande, OR, US

## 36 Floor 1 - Office



**Dimensions:** 11'8" x 13'0"  
**Area:** 147 sq. ft  
**Counted as living area:** Yes

**Heated:** Yes  
**Finished:** Yes  
**Enclosed:** Yes  
**Contiguous:** Yes  
**Permitted:** Yes  
**Wet space:** No  
**Addition:** No  
**Conversion:** No

## 37 Floor 1 - Office



**Dimensions:** 12'1" x 10'5"  
**Area:** 126 sq. ft  
**Counted as living area:** Yes

**Heated:** Yes  
**Finished:** Yes  
**Enclosed:** Yes  
**Contiguous:** Yes  
**Permitted:** Yes  
**Wet space:** No  
**Addition:** No  
**Conversion:** No

## 38 Floor 1 - Hall



**Dimensions:** 24'5" x 9'8"  
**Area:** 167 sq. ft  
**Counted as living area:** Yes

**Heated:** Yes  
**Finished:** Yes  
**Enclosed:** Yes  
**Contiguous:** Yes  
**Permitted:** Yes  
**Wet space:** No  
**Addition:** No  
**Conversion:** No

**39 Floor 1 - Utility**

**Dimensions:** 12'6" x 19'0"  
**Area:** 233 sq. ft  
**Counted as living area:** Yes

**Heated:** Yes  
**Finished:** Yes  
**Enclosed:** Yes  
**Contiguous:** Yes  
**Permitted:** Yes  
**Wet space:** No  
**Addition:** No  
**Conversion:** No

**40 Floor 1 - Hall**

**Dimensions:** 10'1" x 21'8"  
**Area:** 107 sq. ft  
**Counted as living area:** Yes

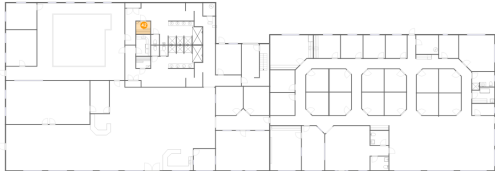
**Heated:** Yes  
**Finished:** Yes  
**Enclosed:** Yes  
**Contiguous:** Yes  
**Permitted:** Yes  
**Wet space:** No  
**Addition:** No  
**Conversion:** No

**41 Floor 1 - Sauna**

**Dimensions:** 6'6" x 5'3"  
**Area:** 34 sq. ft  
**Counted as living area:** Yes

**Heated:** Yes  
**Finished:** Yes  
**Enclosed:** Yes  
**Contiguous:** Yes  
**Permitted:** Yes  
**Wet space:** No  
**Addition:** No  
**Conversion:** No

**42** Floor 1 - Sauna



Dimensions: 6'6" x 5'9"  
Area: 38 sq. ft  
Counted as living area: Yes

Heated: Yes  
Finished: Yes  
Enclosed: Yes  
Contiguous: Yes  
Permitted: Yes  
Wet space: No  
Addition: No  
Conversion: No

**43** Floor 1 - Locker Room



Dimensions: 20'0" x 8'0"  
Area: 160 sq. ft  
Counted as living area: Yes

Heated: Yes  
Finished: Yes  
Enclosed: Yes  
Contiguous: Yes  
Permitted: Yes  
Wet space: No  
Addition: No  
Conversion: No

**44** Floor 1 - Office



Dimensions: 9'10" x 10'9"  
Area: 102 sq. ft  
Counted as living area: Yes

Heated: Yes  
Finished: Yes  
Enclosed: Yes  
Contiguous: Yes  
Permitted: Yes  
Wet space: No  
Addition: No  
Conversion: No

# 2519 Cove Ave, La Grande, OR, US

## 45 Floor 1 - Locker Room



**Dimensions:** 20'5" x 8'3"  
**Area:** 167 sq. ft  
**Counted as living area:** Yes

**Heated:** Yes  
**Finished:** Yes  
**Enclosed:** Yes  
**Contiguous:** Yes  
**Permitted:** Yes  
**Wet space:** No  
**Addition:** No  
**Conversion:** No

## 46 Floor 1 - Hall



**Dimensions:** 77'7" x 6'2"  
**Area:** 339 sq. ft  
**Counted as living area:** Yes

**Heated:** Yes  
**Finished:** Yes  
**Enclosed:** Yes  
**Contiguous:** Yes  
**Permitted:** Yes  
**Wet space:** No  
**Addition:** No  
**Conversion:** No

## 47 Floor 1 - Office



**Dimensions:** 10'2" x 10'4"  
**Area:** 101 sq. ft  
**Counted as living area:** Yes

**Heated:** Yes  
**Finished:** Yes  
**Enclosed:** Yes  
**Contiguous:** Yes  
**Permitted:** Yes  
**Wet space:** No  
**Addition:** No  
**Conversion:** No

**48** Floor 1 - Hall



Dimensions: 8'2" x 10'7"  
Area: 71 sq. ft  
Counted as living area: Yes

Heated: Yes  
Finished: Yes  
Enclosed: Yes  
Contiguous: Yes  
Permitted: Yes  
Wet space: No  
Addition: No  
Conversion: No

**49** Floor 1 - WC



Dimensions: 3'8" x 4'7"  
Area: 17 sq. ft  
Counted as living area: Yes

Heated: Yes  
Finished: Yes  
Enclosed: Yes  
Contiguous: Yes  
Permitted: Yes  
Wet space: No  
Addition: No  
Conversion: No

**50** Floor 1 - Room



Dimensions: 16'2" x 16'4"  
Area: 249 sq. ft  
Counted as living area: Yes

Heated: Yes  
Finished: Yes  
Enclosed: Yes  
Contiguous: Yes  
Permitted: Yes  
Wet space: No  
Addition: No  
Conversion: No

# 2519 Cove Ave, La Grande, OR, US

## 51 Floor 1 - Office



**Dimensions:** 11'2" x 10'3"  
**Area:** 114 sq. ft  
**Counted as living area:** Yes

**Heated:** Yes  
**Finished:** Yes  
**Enclosed:** Yes  
**Contiguous:** Yes  
**Permitted:** Yes  
**Wet space:** No  
**Addition:** No  
**Conversion:** No

## 52 Floor 1 - Office



**Dimensions:** 24'5" x 18'1"  
**Area:** 441 sq. ft  
**Counted as living area:** Yes

**Heated:** Yes  
**Finished:** Yes  
**Enclosed:** Yes  
**Contiguous:** Yes  
**Permitted:** Yes  
**Wet space:** No  
**Addition:** No  
**Conversion:** No

## 53 Floor 1 - Hall



**Dimensions:** 7'5" x 15'10"  
**Area:** 88 sq. ft  
**Counted as living area:** Yes

**Heated:** Yes  
**Finished:** Yes  
**Enclosed:** Yes  
**Contiguous:** Yes  
**Permitted:** Yes  
**Wet space:** No  
**Addition:** No  
**Conversion:** No



**54** Floor 1 - WC



Dimensions: 3'8" x 4'9"  
Area: 17 sq. ft  
Counted as living area: Yes

Heated: Yes  
Finished: Yes  
Enclosed: Yes  
Contiguous: Yes  
Permitted: Yes  
Wet space: No  
Addition: No  
Conversion: No

**55** Floor 1 - Office



Dimensions: 9'11" x 10'4"  
Area: 99 sq. ft  
Counted as living area: Yes

Heated: Yes  
Finished: Yes  
Enclosed: Yes  
Contiguous: Yes  
Permitted: Yes  
Wet space: No  
Addition: No  
Conversion: No

**56** Floor 1 - LAUNDRY/UTILITY



Dimensions: 10'2" x 7'2"  
Area: 67 sq. ft  
Counted as living area: Yes

Heated: Yes  
Finished: Yes  
Enclosed: Yes  
Contiguous: Yes  
Permitted: Yes  
Wet space: No  
Addition: No  
Conversion: No

**57** Floor 1 - Pool Room



Dimensions: 54'2" x 35'2"  
Area: 1489 sq. ft  
Counted as living area: Yes

Heated: Yes  
Finished: Yes  
Enclosed: Yes  
Contiguous: Yes  
Permitted: Yes  
Wet space: No  
Addition: No  
Conversion: No

**58** Floor 1 - Office



Dimensions: 9'11" x 10'5"  
Area: 99 sq. ft  
Counted as living area: Yes

Heated: Yes  
Finished: Yes  
Enclosed: Yes  
Contiguous: Yes  
Permitted: Yes  
Wet space: No  
Addition: No  
Conversion: No

**59** Floor 1 - Office



Dimensions: 9'11" x 10'5"  
Area: 99 sq. ft  
Counted as living area: Yes

Heated: Yes  
Finished: Yes  
Enclosed: Yes  
Contiguous: Yes  
Permitted: Yes  
Wet space: No  
Addition: No  
Conversion: No

**60** Floor 1 - Hall



**Dimensions:** 17'4" x 32'2"  
**Area:** 234 sq. ft  
**Counted as living area:** Yes

**Heated:** Yes  
**Finished:** Yes  
**Enclosed:** Yes  
**Contiguous:** Yes  
**Permitted:** Yes  
**Wet space:** No  
**Addition:** No  
**Conversion:** No

**61** Floor 1 - Hall



**Dimensions:** 10'1" x 21'9"  
**Area:** 111 sq. ft  
**Counted as living area:** Yes

**Heated:** Yes  
**Finished:** Yes  
**Enclosed:** Yes  
**Contiguous:** Yes  
**Permitted:** Yes  
**Wet space:** No  
**Addition:** No  
**Conversion:** No

**62** Floor 1 - Bath



**Dimensions:** 23'5" x 11'0"  
**Area:** 217 sq. ft  
**Counted as living area:** Yes

**Heated:** Yes  
**Finished:** Yes  
**Enclosed:** Yes  
**Contiguous:** Yes  
**Permitted:** Yes  
**Wet space:** Yes  
**Addition:** No  
**Conversion:** No

# 2519 Cove Ave, La Grande, OR, US

## 63 Floor 1 - Hall



**Dimensions:** 7'5" x 21'9"  
**Area:** 108 sq. ft  
**Counted as living area:** Yes

**Heated:** Yes  
**Finished:** Yes  
**Enclosed:** Yes  
**Contiguous:** Yes  
**Permitted:** Yes  
**Wet space:** No  
**Addition:** No  
**Conversion:** No

## 64 Floor 1 - Custodial Closet



**Dimensions:** 5'6" x 5'9"  
**Area:** 32 sq. ft  
**Counted as living area:** No

**Heated:** No  
**Finished:** No  
**Enclosed:** Yes  
**Contiguous:** Yes  
**Permitted:** Yes  
**Wet space:** No  
**Addition:** No  
**Conversion:** No

## 65 Floor 1 - Office



**Dimensions:** 9'10" x 9'9"  
**Area:** 96 sq. ft  
**Counted as living area:** Yes

**Heated:** Yes  
**Finished:** Yes  
**Enclosed:** Yes  
**Contiguous:** Yes  
**Permitted:** Yes  
**Wet space:** No  
**Addition:** No  
**Conversion:** No

# 2519 Cove Ave, La Grande, OR, US

## 66 Floor 1 - Office



**Dimensions:** 13'5" x 20'3"  
**Area:** 285 sq. ft  
**Counted as living area:** Yes

**Heated:** Yes  
**Finished:** Yes  
**Enclosed:** Yes  
**Contiguous:** Yes  
**Permitted:** Yes  
**Wet space:** No  
**Addition:** No  
**Conversion:** No

## 67 Floor 1 - Office



**Dimensions:** 10'2" x 10'5"  
**Area:** 102 sq. ft  
**Counted as living area:** Yes

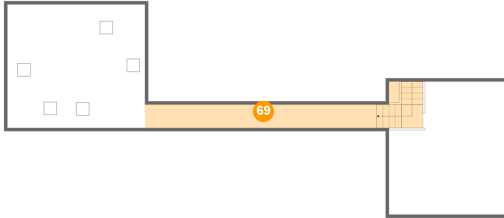
**Heated:** Yes  
**Finished:** Yes  
**Enclosed:** Yes  
**Contiguous:** Yes  
**Permitted:** Yes  
**Wet space:** No  
**Addition:** No  
**Conversion:** No

## 68 Floor 1 - Reception



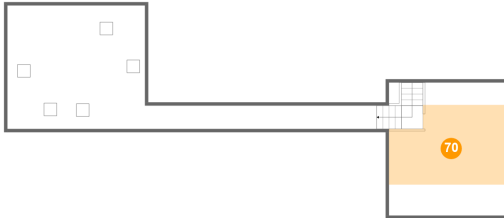
**Dimensions:** 10'4" x 20'3"  
**Area:** 202 sq. ft  
**Counted as living area:** Yes

**Heated:** Yes  
**Finished:** Yes  
**Enclosed:** Yes  
**Contiguous:** Yes  
**Permitted:** Yes  
**Wet space:** No  
**Addition:** No  
**Conversion:** No

**69 Floor 2 - Hall**

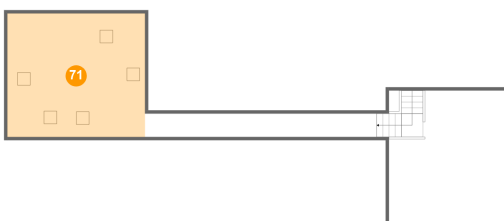
**Dimensions:** 35'10" x 3'7"  
**Area:** 173 sq. ft  
**Counted as living area:** No

**Heated:** Yes  
**Finished:** No  
**Enclosed:** Yes  
**Contiguous:** Yes  
**Permitted:** Yes  
**Wet space:** No  
**Addition:** No  
**Conversion:** No

**70 Floor 2 - Attic**

**Dimensions:** 17'11" x 20'7"  
**Area:** 201 sq. ft  
**Counted as living area:** No

**Heated:** No  
**Finished:** No  
**Enclosed:** Yes  
**Contiguous:** Yes  
**Permitted:** Yes  
**Wet space:** No  
**Addition:** No  
**Conversion:** No

**71 Floor 2 - Furnace Room**

**Dimensions:** 21'3" x 19'1"  
**Area:** 405 sq. ft  
**Counted as living area:** No

**Heated:** No  
**Finished:** No  
**Enclosed:** Yes  
**Contiguous:** Yes  
**Permitted:** Yes  
**Wet space:** No  
**Addition:** No  
**Conversion:** No