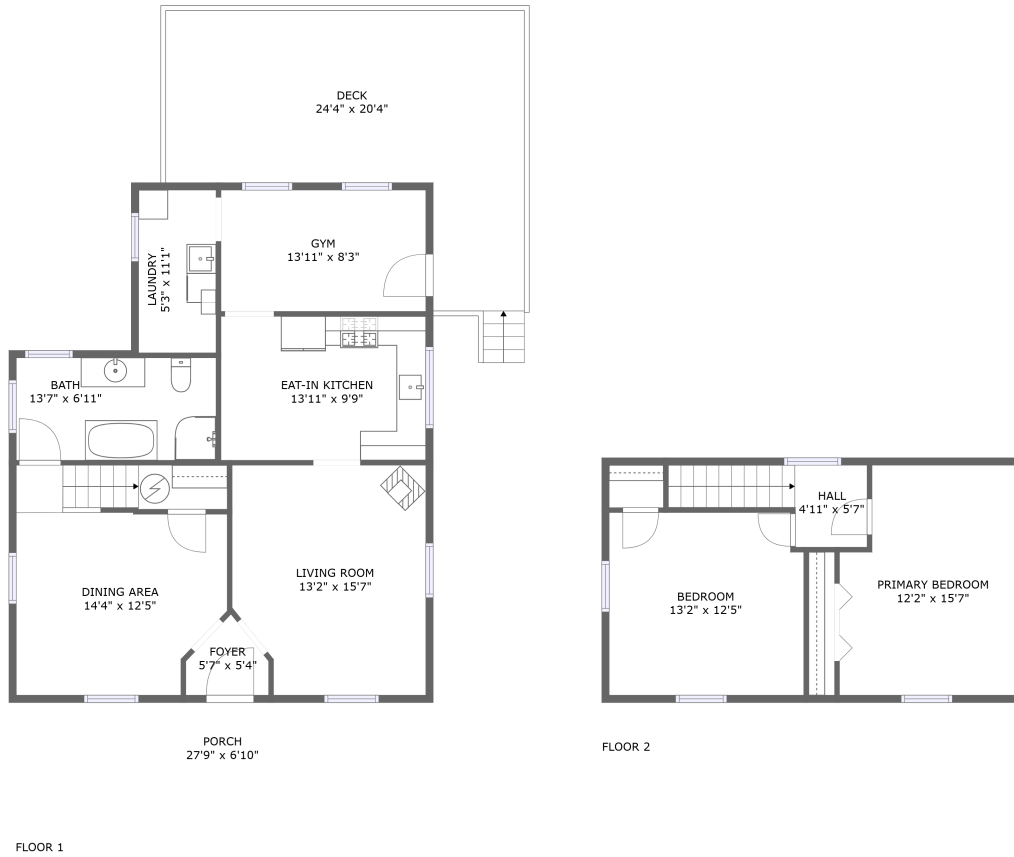



2521 Martinsburg Road, Berkeley Springs, Morgan County, West Virginia, United States, 25411



Property summary

 **0** Garages

 **2** Bedrooms

 **1** Bathrooms

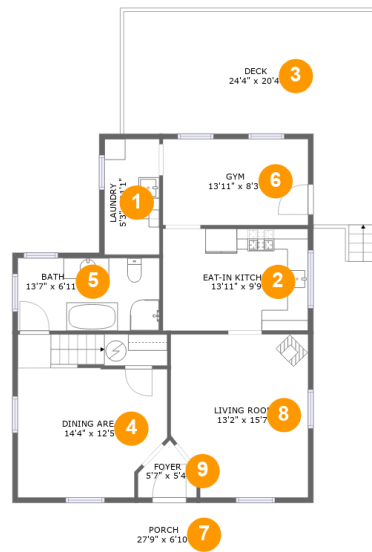
 **0** Half baths

 **2** Floors

 **1,399** Gross living area sqft

 **1,927** Total sqft

2521 Martinsburg Road, Berkeley Springs, Morgan County, West Virginia, United States, 25411



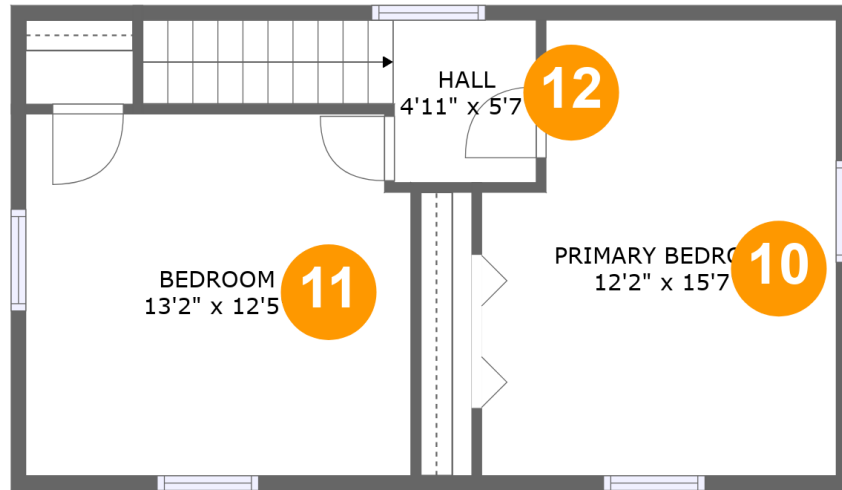
Room dimensions

Floor 1

Total sqft: 1449 Living area: 921

#		Dimensions	sqft	Counted as living area
1	Laundry	5'3" x 11'1"	58 sq. ft	Yes
2	Eat-in Kitchen	13'11" x 9'9"	136 sq. ft	Yes
3	Deck	24'4" x 20'4"	339 sq. ft	No
4	Dining Area	14'4" x 12'5"	208 sq. ft	Yes
5	Bath	13'7" x 6'11"	94 sq. ft	Yes
6	Gym	13'11" x 8'3"	114 sq. ft	Yes
7	Porch	27'9" x 6'10"	189 sq. ft	No
8	Living Room	13'2" x 15'7"	193 sq. ft	Yes
9	Foyer	5'7" x 5'4"	22 sq. ft	Yes

2521 Martinsburg Road, Berkeley Springs, Morgan County, West Virginia, United States, 25411



Room dimensions

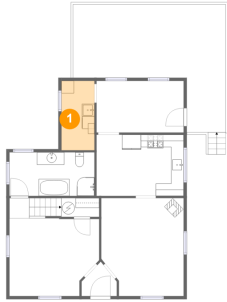
Floor 2

Total sqft: 478 Living area: 478

#		Dimensions	sqft	Counted as living area
10	Primary Bedroom	12'2" x 15'7"	177 sq. ft	Yes
11	Bedroom	13'2" x 12'5"	161 sq. ft	Yes
12	Hall	4'11" x 5'7"	52 sq. ft	Yes

2521 Martinsburg Road, Berkeley Springs, Morgan County, West Virginia, United States, 25411

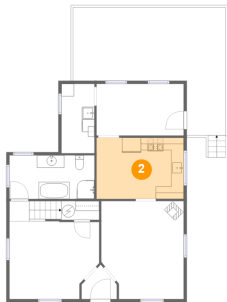
1 Floor 1 - Laundry



Dimensions: 5'3" x 11'1"
Area: 58 sq. ft
Counted as living area: Yes

Heated: Yes
Finished: Yes
Enclosed: Yes
Contiguous: Yes
Permitted: Yes
Wet space: No
Addition: No
Conversion: No

2 Floor 1 - Eat-in Kitchen



Dimensions: 13'11" x 9'9"
Area: 136 sq. ft
Counted as living area: Yes

Heated: Yes
Finished: Yes
Enclosed: Yes
Contiguous: Yes
Permitted: Yes
Wet space: No
Addition: No
Conversion: No

2521 Martinsburg Road, Berkeley Springs, Morgan County, West Virginia, United States, 25411

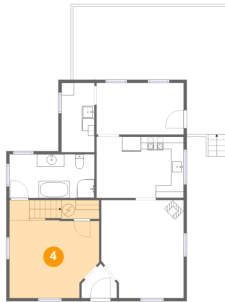
3 Floor 1 - Deck



Dimensions: 24'4" x 20'4"
Area: 339 sq. ft
Counted as living area: No

Heated: No
Finished: Yes
Enclosed: No
Contiguous: Yes
Permitted: Yes
Wet space: No
Addition: No
Conversion: No

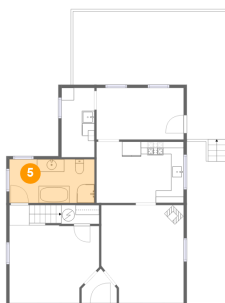
4 Floor 1 - Dining Area



Dimensions: 14'4" x 12'5"
Area: 208 sq. ft
Counted as living area: Yes

Heated: Yes
Finished: Yes
Enclosed: Yes
Contiguous: Yes
Permitted: Yes
Wet space: No
Addition: No
Conversion: No

5 Floor 1 - Bath

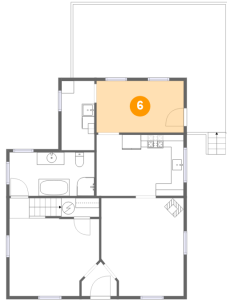


Dimensions: 13'7" x 6'11"
Area: 94 sq. ft
Counted as living area: Yes

Heated: Yes
Finished: Yes
Enclosed: Yes
Contiguous: Yes
Permitted: Yes
Wet space: Yes
Addition: No
Conversion: No

2521 Martinsburg Road, Berkeley Springs, Morgan County, West Virginia, United States, 25411

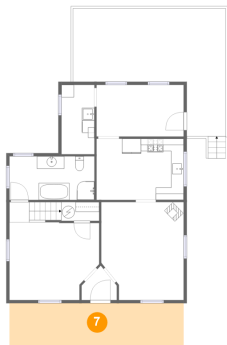
6 Floor 1 - Gym



Dimensions: 13'11" x 8'3"
Area: 114 sq. ft
Counted as living area: Yes

Heated: Yes
Finished: Yes
Enclosed: Yes
Contiguous: Yes
Permitted: Yes
Wet space: No
Addition: No
Conversion: No

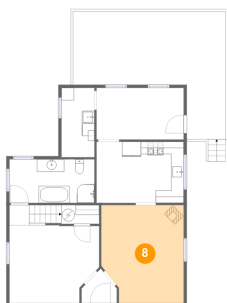
7 Floor 1 - Porch



Dimensions: 27'9" x 6'10"
Area: 189 sq. ft
Counted as living area: No

Heated: No
Finished: Yes
Enclosed: No
Contiguous: Yes
Permitted: Yes
Wet space: No
Addition: No
Conversion: No

8 Floor 1 - Living Room

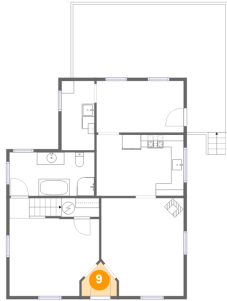


Dimensions: 13'2" x 15'7"
Area: 193 sq. ft
Counted as living area: Yes

Heated: Yes
Finished: Yes
Enclosed: Yes
Contiguous: Yes
Permitted: Yes
Wet space: No
Addition: No
Conversion: No

2521 Martinsburg Road, Berkeley Springs, Morgan County, West Virginia, United States, 25411

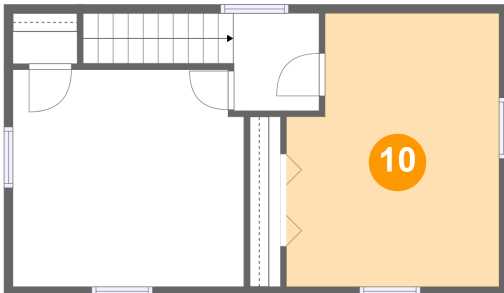
9 Floor 1 - Foyer



Dimensions: 5'7" x 5'4"
Area: 22 sq. ft
Counted as living area: Yes

Heated: Yes
Finished: Yes
Enclosed: Yes
Contiguous: Yes
Permitted: Yes
Wet space: No
Addition: No
Conversion: No

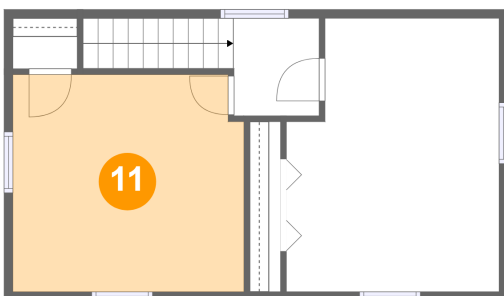
10 Floor 2 - Primary Bedroom



Dimensions: 12'2" x 15'7"
Area: 177 sq. ft
Counted as living area: Yes

Heated: Yes
Finished: Yes
Enclosed: Yes
Contiguous: Yes
Permitted: Yes
Wet space: No
Addition: No
Conversion: No

11 Floor 2 - Bedroom

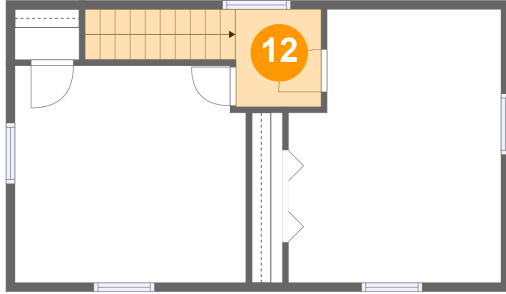


Dimensions: 13'2" x 12'5"
Area: 161 sq. ft
Counted as living area: Yes

Heated: Yes
Finished: Yes
Enclosed: Yes
Contiguous: Yes
Permitted: Yes
Wet space: No
Addition: No
Conversion: No

**2521 Martinsburg Road, Berkeley Springs, Morgan
County, West Virginia, United States, 25411**

12 Floor 2 - Hall



Dimensions: 4'11" x 5'7"
Area: 52 sq. ft
Counted as living area: Yes

Heated: Yes
Finished: Yes
Enclosed: Yes
Contiguous: Yes
Permitted: Yes
Wet space: No
Addition: No
Conversion: No