

Home report

8726 Hambleton Way, Atlee, Mechanicsville, Hanover County,
Virginia, United States, 23116




Total Area: 2460 sq. ft

Floor 1: 938 sq. ft, Floor 2: 1126 sq. ft, Floor 3: 396 sq. ft

Excluded: Garage 388 sq. ft, Porch 77 sq. ft, Utility 85 sq. ft, Walls: 216 sq. ft

Property summary

 **3** Floors

 **3** Bedrooms

 **2** Bathrooms

Home report

**8726 Hambleton Way, Atlee, Mechanicsville, Hanover County,
Virginia, United States, 23116**



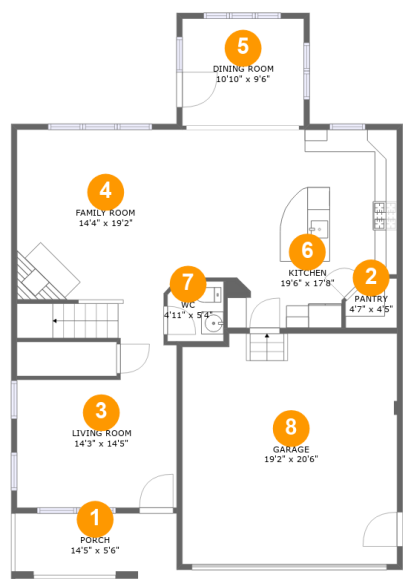
1
Half baths



1
Garages

Home report

8726 Hambleton Way, Atlee, Mechanicsville, Hanover County,
Virginia, United States, 23116



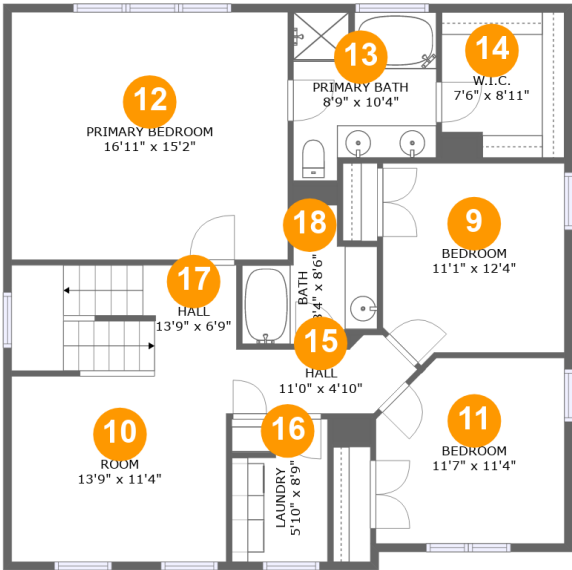
Room dimensions

Floor 1 Total:938sqft Excluded: 465sqft

#		Max Dimensions	sqft	Included
1	Porch	14'5" x 5'6"	77 sq. ft	No
2	Pantry	4'7" x 4'5"	18 sq. ft	Yes
3	Living Room	14'3" x 14'5"	178 sq. ft	Yes
4	Family Room	14'4" x 19'2"	261 sq. ft	Yes
5	Dining Room	10'10" x 9'6"	103 sq. ft	Yes
6	Kitchen	19'6" x 17'8"	301 sq. ft	Yes
7	WC	4'11" x 5'4"	26 sq. ft	Yes
8	Garage	19'2" x 20'6"	388 sq. ft	No

Home report

8726 Hambleton Way, Atlee, Mechanicsville, Hanover County,
Virginia, United States, 23116



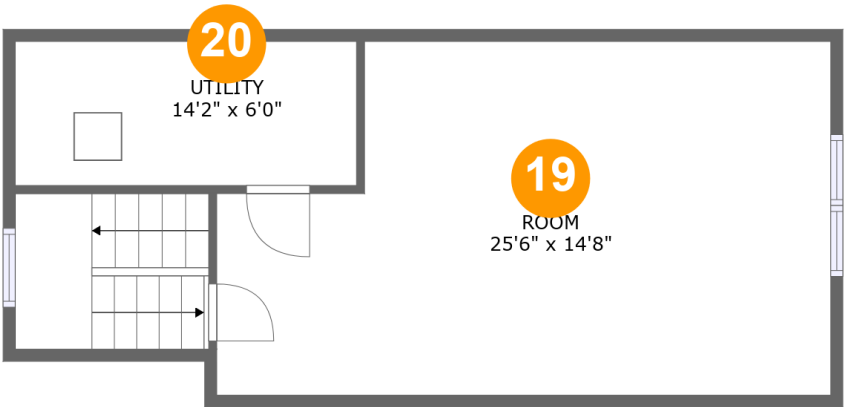
Room dimensions

Floor 2 Total:1126sqft Excluded: 0sqft

#		Max Dimensions	sqft	Included
9	Bedroom	11'1" x 12'4"	128 sq. ft	Yes
10	Room	13'9" x 11'4"	151 sq. ft	Yes
11	Bedroom	11'7" x 11'4"	124 sq. ft	Yes
12	Primary Bedroom	16'11" x 15'2"	256 sq. ft	Yes
13	Primary Bath	8'9" x 10'4"	81 sq. ft	Yes
14	W.I.C.	7'6" x 8'11"	63 sq. ft	Yes
15	Hall	11'0" x 4'10"	41 sq. ft	Yes
16	Laundry	5'10" x 8'9"	45 sq. ft	Yes
17	Hall	13'9" x 6'9"	92 sq. ft	Yes
18	Bath	8'4" x 8'6"	54 sq. ft	Yes

Home report

8726 Hambleton Way, Atlee, Mechanicsville, Hanover County,
Virginia, United States, 23116



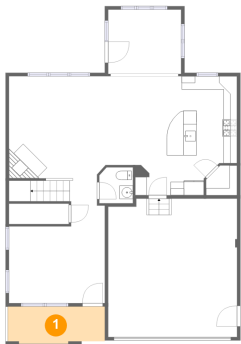
Room dimensions

Floor 3 Total:396sqft Excluded: 85sqft

#		Max Dimensions	sqft	Included
19	Room	25'6" x 14'8"	335 sq. ft	Yes
20	Utility	14'2" x 6'0"	85 sq. ft	No

8726 Hambleton Way, Atlee, Mechanicsville, Hanover County,
Virginia, United States, 23116

1 Floor 1 - Porch



Max Dimensions: 14'5" x 5'6"
Calculated Area: 77 sq. ft
Included: No

Heated: No
Finished: Yes
Enclosed: No
Contiguous: Yes
Permitted: Yes
Wet space: No
Addition: No
Conversion: No

2 Floor 1 - Pantry



Max Dimensions: 4'7" x 4'5"
Calculated Area: 18 sq. ft
Included: Yes

Heated: Yes
Finished: Yes
Enclosed: Yes
Contiguous: Yes
Permitted: Yes
Wet space: No
Addition: No
Conversion: No

8726 Hambleton Way, Atlee, Mechanicsville, Hanover County,
Virginia, United States, 23116

3 Floor 1 - Living Room



Max Dimensions: 14'3" x 14'5"
Calculated Area: 178 sq. ft
Included: Yes

Heated: Yes
Finished: Yes
Enclosed: Yes
Contiguous: Yes
Permitted: Yes
Wet space: No
Addition: No
Conversion: No

4 Floor 1 - Family Room



Max Dimensions: 14'4" x 19'2"
Calculated Area: 261 sq. ft
Included: Yes

Heated: Yes
Finished: Yes
Enclosed: Yes
Contiguous: Yes
Permitted: Yes
Wet space: No
Addition: No
Conversion: No

5 Floor 1 - Dining Room



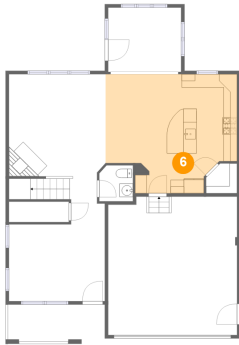
Max Dimensions: 10'10" x 9'6"
Calculated Area: 103 sq. ft
Included: Yes

Heated: Yes
Finished: Yes
Enclosed: Yes
Contiguous: Yes
Permitted: Yes
Wet space: No
Addition: No
Conversion: No

Home report

8726 Hambleton Way, Atlee, Mechanicsville, Hanover County,
Virginia, United States, 23116

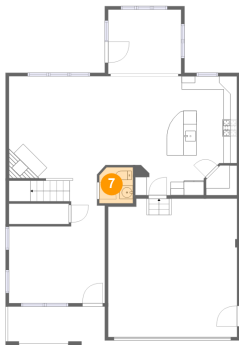
6 Floor 1 - Kitchen



Max Dimensions: 19'6" x 17'8"
Calculated Area: 301 sq. ft
Included: Yes

Heated: Yes
Finished: Yes
Enclosed: Yes
Contiguous: Yes
Permitted: Yes
Wet space: No
Addition: No
Conversion: No

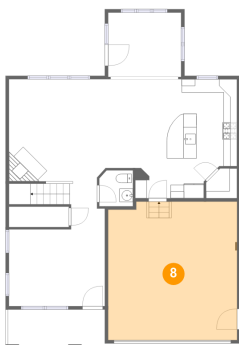
7 Floor 1 - WC



Max Dimensions: 4'11" x 5'4"
Calculated Area: 26 sq. ft
Included: Yes

Heated: Yes
Finished: Yes
Enclosed: Yes
Contiguous: Yes
Permitted: Yes
Wet space: Yes
Addition: No
Conversion: No

8 Floor 1 - Garage

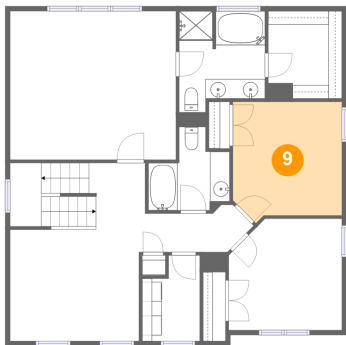


Max Dimensions: 19'2" x 20'6"
Calculated Area: 388 sq. ft
Included: No

Heated: No
Finished: No
Enclosed: Yes
Contiguous: Yes
Permitted: Yes
Wet space: No
Addition: No
Conversion: No

8726 Hambleton Way, Atlee, Mechanicsville, Hanover County,
Virginia, United States, 23116

9 Floor 2 - Bedroom



Max Dimensions: 11'1" x 12'4"
Calculated Area: 128 sq. ft
Included: Yes

Heated: Yes
Finished: Yes
Enclosed: Yes
Contiguous: Yes
Permitted: Yes
Wet space: No
Addition: No
Conversion: No

10 Floor 2 - Room



Max Dimensions: 13'9" x 11'4"
Calculated Area: 151 sq. ft
Included: Yes

Heated: Yes
Finished: Yes
Enclosed: Yes
Contiguous: Yes
Permitted: Yes
Wet space: No
Addition: No
Conversion: No

11 Floor 2 - Bedroom

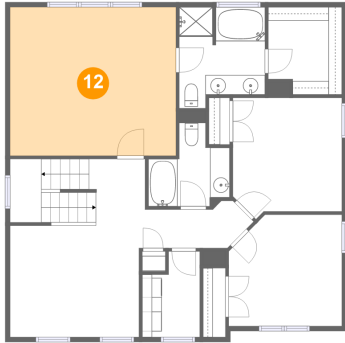


Max Dimensions: 11'7" x 11'4"
Calculated Area: 124 sq. ft
Included: Yes

Heated: Yes
Finished: Yes
Enclosed: Yes
Contiguous: Yes
Permitted: Yes
Wet space: No
Addition: No
Conversion: No

8726 Hambleton Way, Atlee, Mechanicsville, Hanover County,
Virginia, United States, 23116

12 Floor 2 - Primary Bedroom



Max Dimensions: 16'11" x 15'2"
Calculated Area: 256 sq. ft
Included: Yes

Heated: Yes
Finished: Yes
Enclosed: Yes
Contiguous: Yes
Permitted: Yes
Wet space: No
Addition: No
Conversion: No

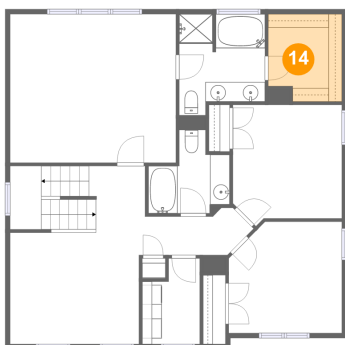
13 Floor 2 - Primary Bath



Max Dimensions: 8'9" x 10'4"
Calculated Area: 81 sq. ft
Included: Yes

Heated: Yes
Finished: Yes
Enclosed: Yes
Contiguous: Yes
Permitted: Yes
Wet space: Yes
Addition: No
Conversion: No

14 Floor 2 - W.I.C.

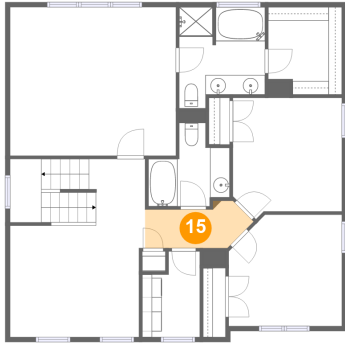


Max Dimensions: 7'6" x 8'11"
Calculated Area: 63 sq. ft
Included: Yes

Heated: Yes
Finished: Yes
Enclosed: Yes
Contiguous: Yes
Permitted: Yes
Wet space: No
Addition: No
Conversion: No

8726 Hambleton Way, Atlee, Mechanicsville, Hanover County,
Virginia, United States, 23116

15 Floor 2 - Hall



Max Dimensions: 11'0" x 4'10"
Calculated Area: 41 sq. ft
Included: Yes

Heated: Yes
Finished: Yes
Enclosed: Yes
Contiguous: Yes
Permitted: Yes
Wet space: No
Addition: No
Conversion: No

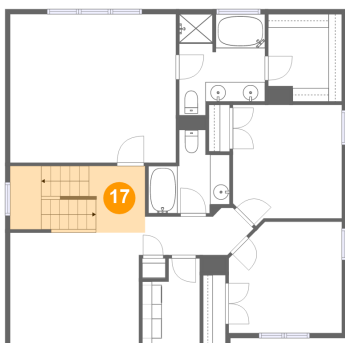
16 Floor 2 - Laundry



Max Dimensions: 5'10" x 8'9"
Calculated Area: 45 sq. ft
Included: Yes

Heated: Yes
Finished: Yes
Enclosed: Yes
Contiguous: Yes
Permitted: Yes
Wet space: No
Addition: No
Conversion: No

17 Floor 2 - Hall



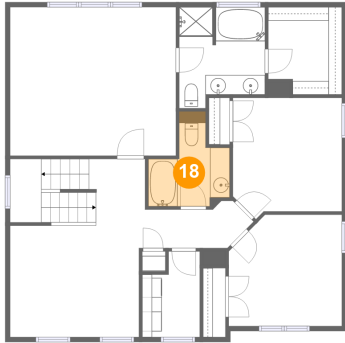
Max Dimensions: 13'9" x 6'9"
Calculated Area: 92 sq. ft
Included: Yes

Heated: Yes
Finished: Yes
Enclosed: Yes
Contiguous: Yes
Permitted: Yes
Wet space: No
Addition: No
Conversion: No

Home report

8726 Hambleton Way, Atlee, Mechanicsville, Hanover County,
Virginia, United States, 23116

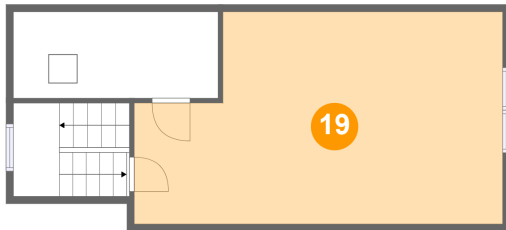
18 Floor 2 - Bath



Max Dimensions: 8'4" x 8'6"
Calculated Area: 54 sq. ft
Included: Yes

Heated: Yes
Finished: Yes
Enclosed: Yes
Contiguous: Yes
Permitted: Yes
Wet space: Yes
Addition: No
Conversion: No

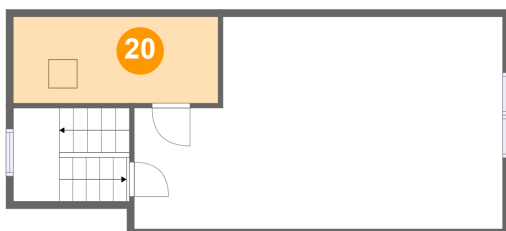
19 Floor 3 - Room



Max Dimensions: 25'6" x 14'8"
Calculated Area: 335 sq. ft
Included: Yes

Heated: Yes
Finished: Yes
Enclosed: Yes
Contiguous: Yes
Permitted: Yes
Wet space: No
Addition: No
Conversion: No

20 Floor 3 - Utility



Max Dimensions: 14'2" x 6'0"
Calculated Area: 85 sq. ft
Included: No

Heated: Yes
Finished: No
Enclosed: Yes
Contiguous: Yes
Permitted: Yes
Wet space: No
Addition: No
Conversion: No