

# Home data report

## 7434 Willow Path Ln, Knoxville, TN, US

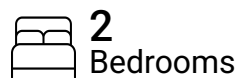


**Total Area: 2155 sq. ft**

Floor 1: 1775 sq. ft, Floor 2: 380 sq. ft

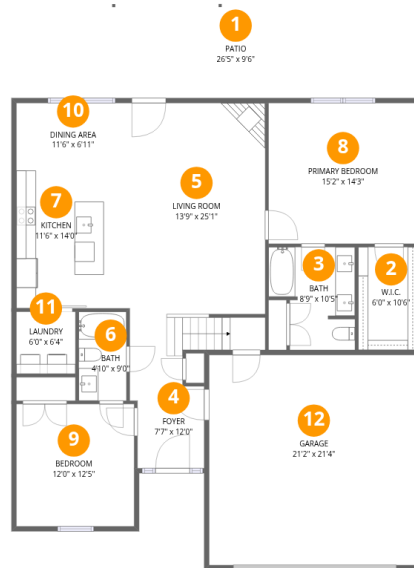
Excluded: Patio 253 sq. ft, Low ceiling 44 sq. ft, Walls: 140 sq. ft

## Property summary



# Home data report

## 7434 Willow Path Ln, Knoxville, TN, US



## Room dimensions

Floor 1

Total: 1775 sqft

Excluded: 253 sqft

#		Dimensions	sqft	Counted as living area
1	Patio	26'5" x 9'6"	253 sq. ft	No
2	W.I.C.	6'0" x 10'6"	63 sq. ft	Yes
3	Bath	8'9" x 10'5"	79 sq. ft	Yes
4	Foyer	7'7" x 12'0"	77 sq. ft	Yes
5	Living Room	13'9" x 25'1"	332 sq. ft	Yes
6	Bath	4'10" x 9'0"	44 sq. ft	Yes
7	Kitchen	11'6" x 14'0"	161 sq. ft	Yes
8	Primary Bedroom	15'2" x 14'3"	217 sq. ft	Yes
9	Bedroom	12'0" x 12'5"	149 sq. ft	Yes
10	Dining Area	11'6" x 6'11"	79 sq. ft	Yes
11	Laundry	6'0" x 6'4"	38 sq. ft	Yes

Scan captured on Tue, 04 Nov 2025 15:20:53 GMT

FLOOR PLAN CREATED BY CUBICASA APP. MEASUREMENTS ARE CONSIDERED RELIABLE BUT NOT ACCURATE.

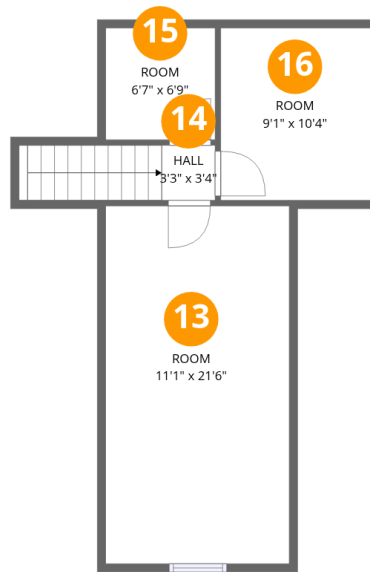
Home data report

**7434 Willow Path Ln, Knoxville, TN, US**

#		Dimensions	sqft	Counted as living area
12	Garage	21'2" x 21'4"	452 sq. ft	Yes

Home data report

7434 Willow Path Ln, Knoxville, TN, US



Room dimensions

Floor 2

Total:380sqft Excluded: 44sqft

#		Dimensions	sqft	Counted as living area
13	Room	11'1" x 21'6"	194 sq. ft	Yes
14	Hall	3'3" x 3'4"	39 sq. ft	Yes
15	Room	6'7" x 6'9"	44 sq. ft	Yes
16	Room	9'1" x 10'4"	94 sq. ft	Yes

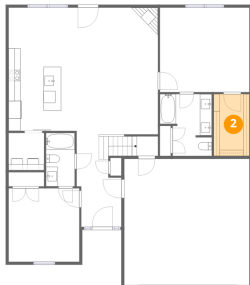
## 1 Floor 1 - Patio



Dimensions: 26'5" x 9'6"  
Area: 253 sq. ft  
Counted as living area: No

Heated: No  
Finished: No  
Enclosed: No  
Contiguous: Yes  
Permitted: Yes  
Wet space: No  
Addition: No  
Conversion: No

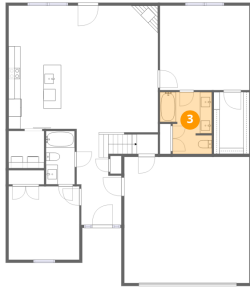
## 2 Floor 1 - W.I.C.



Dimensions: 6'0" x 10'6"  
Area: 63 sq. ft  
Counted as living area: Yes

Heated: Yes  
Finished: Yes  
Enclosed: Yes  
Contiguous: Yes  
Permitted: Yes  
Wet space: No  
Addition: No  
Conversion: No

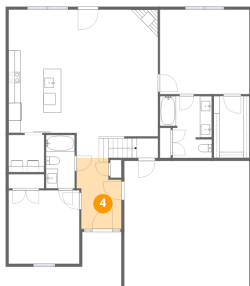
### 3 Floor 1 - Bath



Dimensions: 8'9" x 10'5"  
Area: 79 sq. ft  
Counted as living area: Yes

Heated: Yes  
Finished: Yes  
Enclosed: Yes  
Contiguous: Yes  
Permitted: Yes  
Wet space: Yes  
Addition: No  
Conversion: No

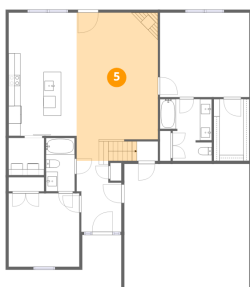
### 4 Floor 1 - Foyer



Dimensions: 7'7" x 12'0"  
Area: 77 sq. ft  
Counted as living area: Yes

Heated: Yes  
Finished: Yes  
Enclosed: Yes  
Contiguous: Yes  
Permitted: Yes  
Wet space: No  
Addition: No  
Conversion: No

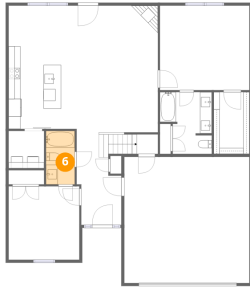
### 5 Floor 1 - Living Room



Dimensions: 13'9" x 25'1"  
Area: 332 sq. ft  
Counted as living area: Yes

Heated: Yes  
Finished: Yes  
Enclosed: Yes  
Contiguous: Yes  
Permitted: Yes  
Wet space: No  
Addition: No  
Conversion: No

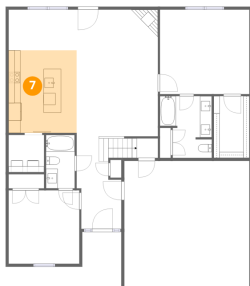
## 6 Floor 1 - Bath



Dimensions: 4'10" x 9'0"  
Area: 44 sq. ft  
Counted as living area: Yes

Heated: Yes  
Finished: Yes  
Enclosed: Yes  
Contiguous: Yes  
Permitted: Yes  
Wet space: Yes  
Addition: No  
Conversion: No

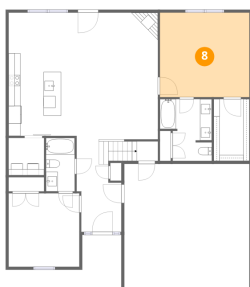
## 7 Floor 1 - Kitchen



Dimensions: 11'6" x 14'0"  
Area: 161 sq. ft  
Counted as living area: Yes

Heated: Yes  
Finished: Yes  
Enclosed: Yes  
Contiguous: Yes  
Permitted: Yes  
Wet space: No  
Addition: No  
Conversion: No

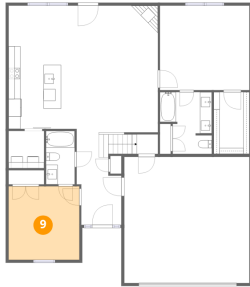
## 8 Floor 1 - Primary Bedroom



Dimensions: 15'2" x 14'3"  
Area: 217 sq. ft  
Counted as living area: Yes

Heated: Yes  
Finished: Yes  
Enclosed: Yes  
Contiguous: Yes  
Permitted: Yes  
Wet space: No  
Addition: No  
Conversion: No

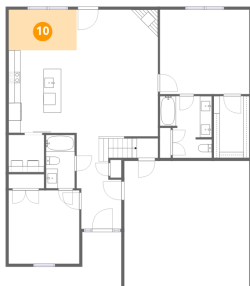
### 9 Floor 1 - Bedroom



Dimensions: 12'0" x 12'5"  
Area: 149 sq. ft  
Counted as living area: Yes

Heated: Yes  
Finished: Yes  
Enclosed: Yes  
Contiguous: Yes  
Permitted: Yes  
Wet space: No  
Addition: No  
Conversion: No

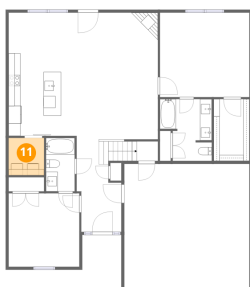
### 10 Floor 1 - Dining Area



Dimensions: 11'6" x 6'11"  
Area: 79 sq. ft  
Counted as living area: Yes

Heated: Yes  
Finished: Yes  
Enclosed: Yes  
Contiguous: Yes  
Permitted: Yes  
Wet space: No  
Addition: No  
Conversion: No

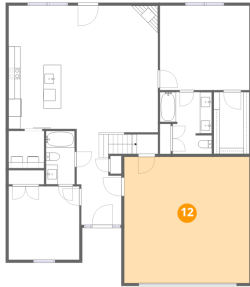
### 11 Floor 1 - Laundry



Dimensions: 6'0" x 6'4"  
Area: 38 sq. ft  
Counted as living area: Yes

Heated: Yes  
Finished: Yes  
Enclosed: Yes  
Contiguous: Yes  
Permitted: Yes  
Wet space: No  
Addition: No  
Conversion: No

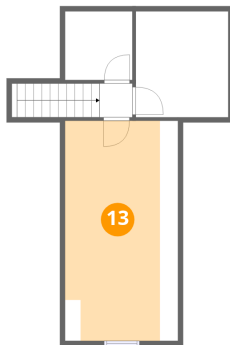
## 12 Floor 1 - Garage



Dimensions: 21'2" x 21'4"  
Area: 452 sq. ft  
Counted as living area: No

Heated: No  
Finished: Yes  
Enclosed: Yes  
Contiguous: Yes  
Permitted: Yes  
Wet space: No  
Addition: No  
Conversion: No

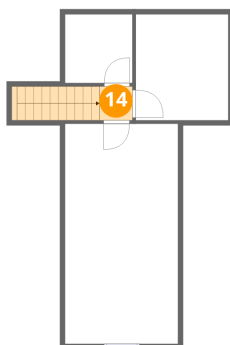
## 13 Floor 2 - Room



Dimensions: 11'1" x 21'6"  
Area: 194 sq. ft  
Counted as living area: Yes

Heated: Yes  
Finished: Yes  
Enclosed: Yes  
Contiguous: Yes  
Permitted: Yes  
Wet space: No  
Addition: No  
Conversion: No

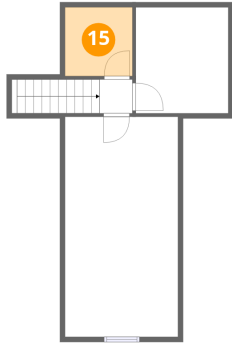
## 14 Floor 2 - Hall



Dimensions: 3'3" x 3'4"  
Area: 39 sq. ft  
Counted as living area: Yes

Heated: Yes  
Finished: Yes  
Enclosed: Yes  
Contiguous: Yes  
Permitted: Yes  
Wet space: No  
Addition: No  
Conversion: No

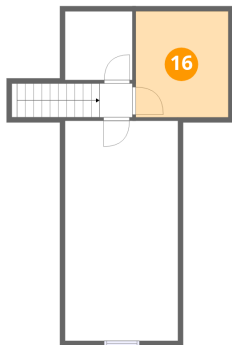
**15** Floor 2 - Room



Dimensions: 6'7" x 6'9"  
Area: 44 sq. ft  
Counted as living area: Yes

Heated: Yes  
Finished: Yes  
Enclosed: Yes  
Contiguous: Yes  
Permitted: Yes  
Wet space: No  
Addition: No  
Conversion: No

**16** Floor 2 - Room



Dimensions: 9'1" x 10'4"  
Area: 94 sq. ft  
Counted as living area: Yes

Heated: Yes  
Finished: Yes  
Enclosed: Yes  
Contiguous: Yes  
Permitted: Yes  
Wet space: No  
Addition: No  
Conversion: No