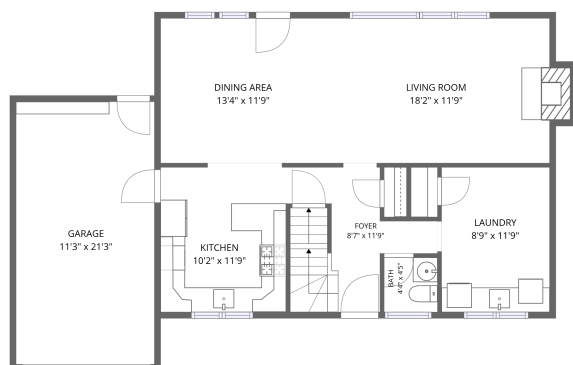
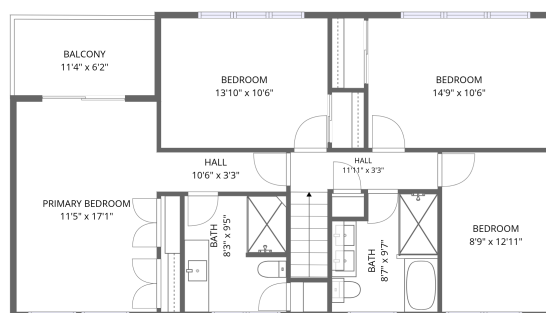


## Home data report

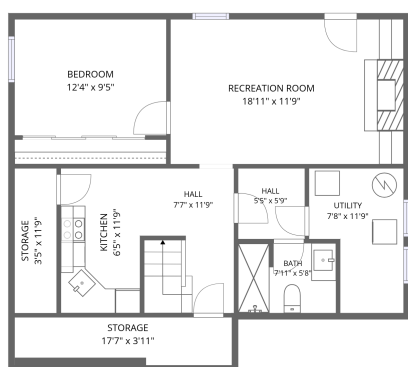
# 17 Highland Crescent, Victoria Highlands, Cambridge, Waterloo County, Ontario, Canada, N1S 1L5



2nd floor



3rd floor



1st floor

**Total Area: 2343 sq. ft**

1st Floor: 640 sq. ft, 2nd Floor: 753 sq. ft, 3rd Floor: 950 sq. ft

Excluded: Storage 110 sq. ft, Utility 75 sq. ft, Garage 239 sq. ft, Fireplace 9 sq. ft, Balcony 70 sq. ft, Walls: 207 sq. ft

## Property summary



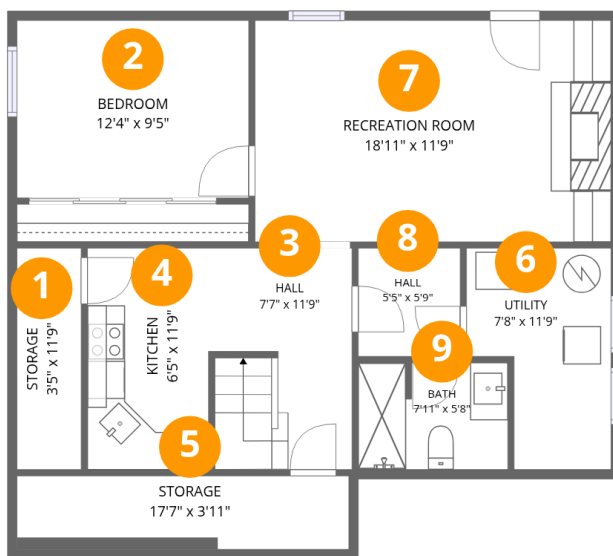
Home data report

# 17 Highland Crescent, Victoria Highlands, Cambridge, Waterloo County, Ontario, Canada, N1S 1L5

 **1**  
Half baths

 **1**  
Garages

# 17 Highland Crescent, Victoria Highlands, Cambridge, Waterloo County, Ontario, Canada, N1S 1L5



## Room dimensions

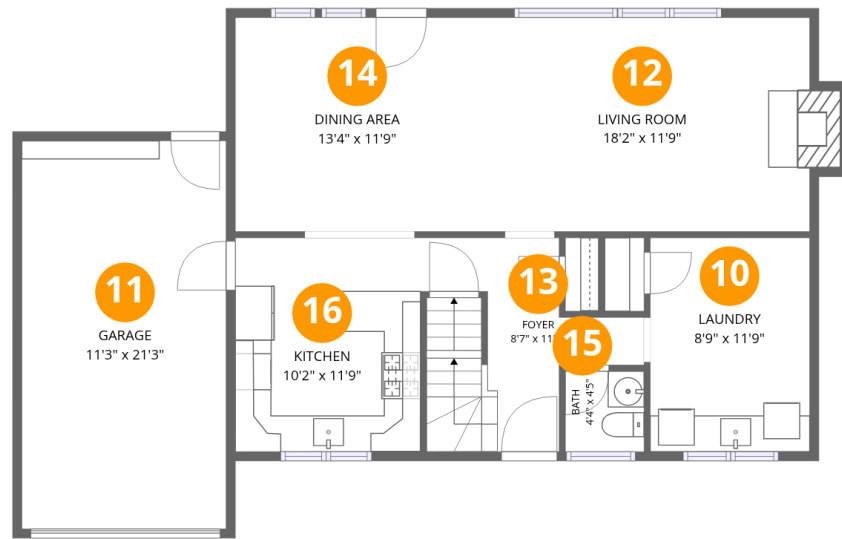
Floor 1

Total:640sqft Excluded: 185sqft

#		Dimensions	sqft	Counted as living area
1	Storage	3'5" x 11'9"	40 sq. ft	No
2	Bedroom	12'4" x 9'5"	116 sq. ft	Yes
3	Hall	7'7" x 11'9"	86 sq. ft	Yes
4	Kitchen	6'5" x 11'9"	75 sq. ft	Yes
5	Storage	17'7" x 3'11"	69 sq. ft	No
6	Utility	7'8" x 11'9"	75 sq. ft	No
7	Recreation Room	18'11" x 11'9"	222 sq. ft	Yes
8	Hall	5'5" x 5'9"	31 sq. ft	Yes
9	Bath	7'11" x 5'8"	44 sq. ft	Yes

## Home data report

# 17 Highland Crescent, Victoria Highlands, Cambridge, Waterloo County, Ontario, Canada, N1S 1L5



## Room dimensions

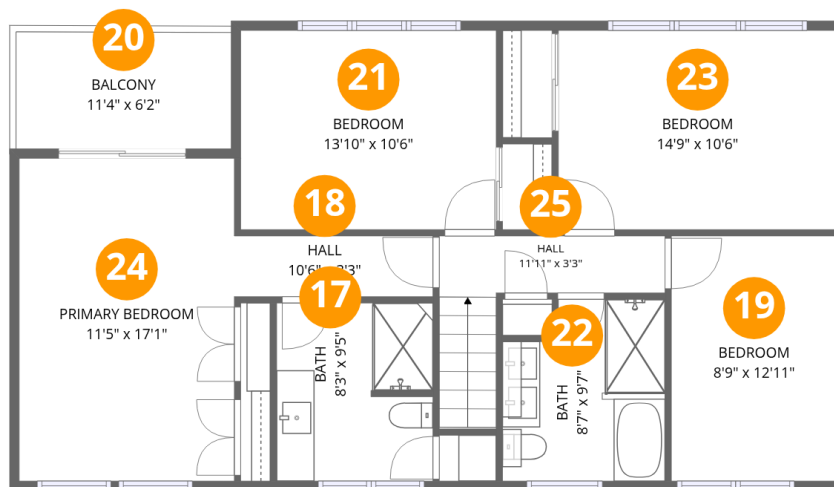
Floor 2

Total:753sqft

Excluded: 248sqft

#		Dimensions	sqft	Counted as living area
10	Laundry	8'9" x 11'9"	103 sq. ft	Yes
11	Garage	11'3" x 21'3"	239 sq. ft	No
12	Living Room	18'2" x 11'9"	220 sq. ft	Yes
13	Foyer	8'7" x 11'9"	96 sq. ft	Yes
14	Dining Area	13'4" x 11'9"	157 sq. ft	Yes
15	Bath	4'4" x 4'5"	19 sq. ft	Yes
16	Kitchen	10'2" x 11'9"	119 sq. ft	Yes

# 17 Highland Crescent, Victoria Highlands, Cambridge, Waterloo County, Ontario, Canada, N1S 1L5



## Room dimensions

Floor 3

Total:950sqft Excluded: 70sqft

#		Dimensions	sqft	Counted as living area
17	Bath	8'3" x 9'5"	77 sq. ft	Yes
18	Hall	10'6" x 3'3"	34 sq. ft	Yes
19	Bedroom	8'9" x 12'11"	113 sq. ft	Yes
20	Balcony	11'4" x 6'2"	70 sq. ft	No
21	Bedroom	13'10" x 10'6"	144 sq. ft	Yes
22	Bath	8'7" x 9'7"	76 sq. ft	Yes
23	Bedroom	14'9" x 10'6"	155 sq. ft	Yes
24	Primary Bedroom	11'5" x 17'1"	194 sq. ft	Yes
25	Hall	11'11" x 3'3"	58 sq. ft	Yes

17 Highland Crescent, Victoria Highlands, Cambridge, Waterloo County, Ontario, Canada, N1S 1L5

**1** Floor 1 - Storage

---



Dimensions: 3'5" x 11'9"  
Area: 40 sq. ft  
Counted as living area: No

Heated: No  
Finished: No  
Enclosed: No  
Contiguous: Yes  
Permitted: Yes  
Wet space: No  
Addition: No  
Conversion: No

**2** Floor 1 - Bedroom

---

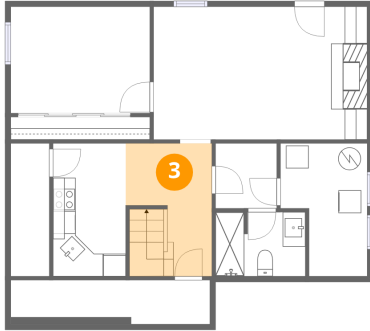


Dimensions: 12'4" x 9'5"  
Area: 116 sq. ft  
Counted as living area: Yes

Heated: Yes  
Finished: Yes  
Enclosed: Yes  
Contiguous: Yes  
Permitted: Yes  
Wet space: No  
Addition: No  
Conversion: No

17 Highland Crescent, Victoria Highlands, Cambridge, Waterloo County, Ontario, Canada, N1S 1L5

**3** Floor 1 - Hall



Dimensions: 7'7" x 11'9"  
Area: 86 sq. ft  
Counted as living area: Yes

Heated: Yes  
Finished: Yes  
Enclosed: Yes  
Contiguous: Yes  
Permitted: Yes  
Wet space: No  
Addition: No  
Conversion: No

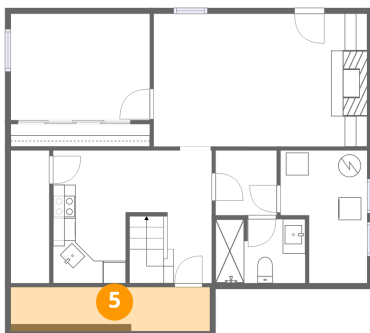
**4** Floor 1 - Kitchen



Dimensions: 6'5" x 11'9"  
Area: 75 sq. ft  
Counted as living area: Yes

Heated: Yes  
Finished: Yes  
Enclosed: Yes  
Contiguous: Yes  
Permitted: Yes  
Wet space: No  
Addition: No  
Conversion: No

**5** Floor 1 - Storage



Dimensions: 17'7" x 3'11"  
Area: 69 sq. ft  
Counted as living area: No

Heated: No  
Finished: No  
Enclosed: No  
Contiguous: Yes  
Permitted: Yes  
Wet space: No  
Addition: No  
Conversion: No

# 17 Highland Crescent, Victoria Highlands, Cambridge, Waterloo County, Ontario, Canada, N1S 1L5

## 6 Floor 1 - Utility



Dimensions: 7'8" x 11'9"  
Area: 75 sq. ft  
Counted as living area: No

Heated: Yes  
Finished: No  
Enclosed: Yes  
Contiguous: Yes  
Permitted: Yes  
Wet space: No  
Addition: No  
Conversion: No

## 7 Floor 1 - Recreation Room



Dimensions: 18'11" x 11'9"  
Area: 222 sq. ft  
Counted as living area: Yes

Heated: Yes  
Finished: Yes  
Enclosed: Yes  
Contiguous: Yes  
Permitted: Yes  
Wet space: No  
Addition: No  
Conversion: No

## 8 Floor 1 - Hall



Dimensions: 5'5" x 5'9"  
Area: 31 sq. ft  
Counted as living area: Yes

Heated: Yes  
Finished: Yes  
Enclosed: Yes  
Contiguous: Yes  
Permitted: Yes  
Wet space: No  
Addition: No  
Conversion: No

17 Highland Crescent, Victoria Highlands, Cambridge, Waterloo County, Ontario, Canada, N1S 1L5

9 Floor 1 - Bath



Dimensions: 7'11" x 5'8"  
Area: 44 sq. ft  
Counted as living area: Yes

Heated: Yes  
Finished: Yes  
Enclosed: Yes  
Contiguous: Yes  
Permitted: Yes  
Wet space: Yes  
Addition: No  
Conversion: No

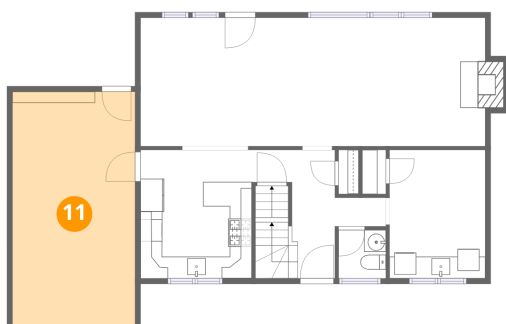
10 Floor 2 - Laundry



Dimensions: 8'9" x 11'9"  
Area: 103 sq. ft  
Counted as living area: Yes

Heated: Yes  
Finished: Yes  
Enclosed: Yes  
Contiguous: Yes  
Permitted: Yes  
Wet space: No  
Addition: No  
Conversion: No

11 Floor 2 - Garage

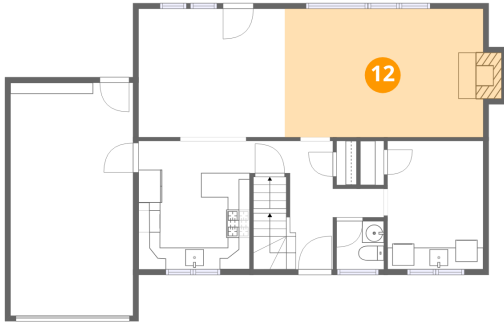


Dimensions: 11'3" x 21'3"  
Area: 239 sq. ft  
Counted as living area: No

Heated: No  
Finished: No  
Enclosed: Yes  
Contiguous: Yes  
Permitted: Yes  
Wet space: No  
Addition: No  
Conversion: No

17 Highland Crescent, Victoria Highlands, Cambridge, Waterloo County, Ontario, Canada, N1S 1L5

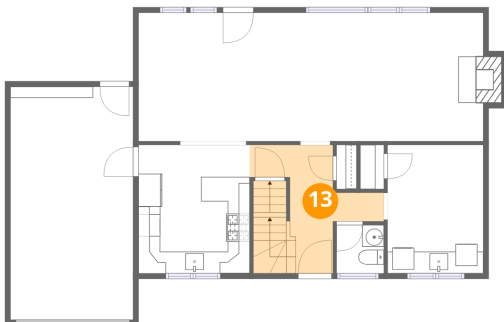
**12** Floor 2 - Living Room



Dimensions: 18'2" x 11'9"  
Area: 220 sq. ft  
Counted as living area: Yes

Heated: Yes  
Finished: Yes  
Enclosed: Yes  
Contiguous: Yes  
Permitted: Yes  
Wet space: No  
Addition: No  
Conversion: No

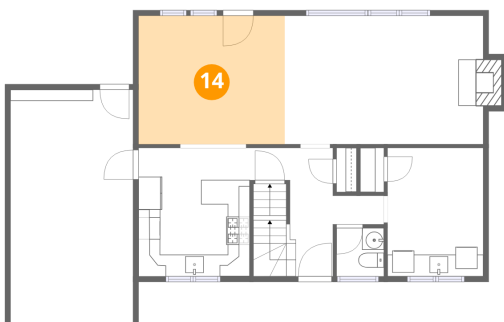
**13** Floor 2 - Foyer



Dimensions: 8'7" x 11'9"  
Area: 96 sq. ft  
Counted as living area: Yes

Heated: Yes  
Finished: Yes  
Enclosed: Yes  
Contiguous: Yes  
Permitted: Yes  
Wet space: No  
Addition: No  
Conversion: No

**14** Floor 2 - Dining Area

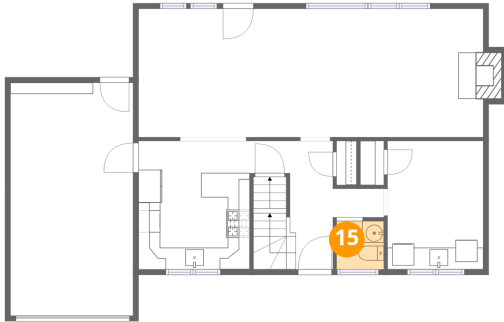


Dimensions: 13'4" x 11'9"  
Area: 157 sq. ft  
Counted as living area: Yes

Heated: Yes  
Finished: Yes  
Enclosed: Yes  
Contiguous: Yes  
Permitted: Yes  
Wet space: No  
Addition: No  
Conversion: No

17 Highland Crescent, Victoria Highlands, Cambridge, Waterloo County, Ontario, Canada, N1S 1L5

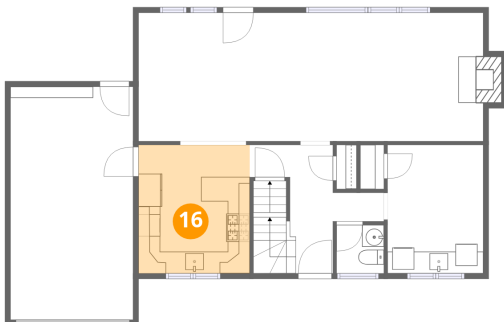
15 Floor 2 - Bath



Dimensions: 4'4" x 4'5"  
Area: 19 sq. ft  
Counted as living area: Yes

Heated: Yes  
Finished: Yes  
Enclosed: Yes  
Contiguous: Yes  
Permitted: Yes  
Wet space: Yes  
Addition: No  
Conversion: No

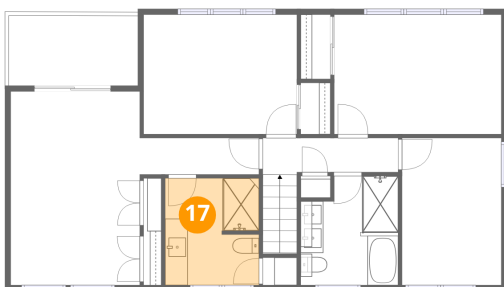
16 Floor 2 - Kitchen



Dimensions: 10'2" x 11'9"  
Area: 119 sq. ft  
Counted as living area: Yes

Heated: Yes  
Finished: Yes  
Enclosed: Yes  
Contiguous: Yes  
Permitted: Yes  
Wet space: No  
Addition: No  
Conversion: No

17 Floor 3 - Bath

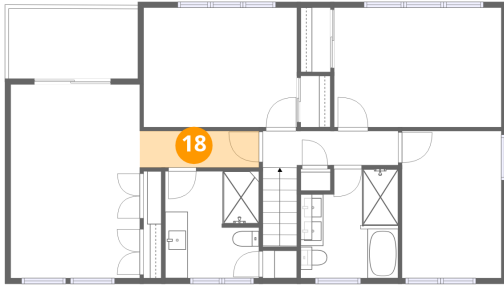


Dimensions: 8'3" x 9'5"  
Area: 77 sq. ft  
Counted as living area: Yes

Heated: Yes  
Finished: Yes  
Enclosed: Yes  
Contiguous: Yes  
Permitted: Yes  
Wet space: Yes  
Addition: No  
Conversion: No

17 Highland Crescent, Victoria Highlands, Cambridge, Waterloo County, Ontario, Canada, N1S 1L5

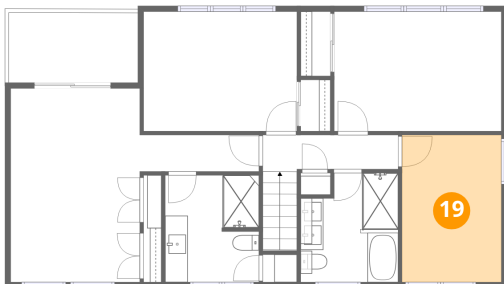
**18** Floor 3 - Hall



Dimensions: 10'6" x 3'3"  
Area: 34 sq. ft  
Counted as living area: Yes

Heated: Yes  
Finished: Yes  
Enclosed: Yes  
Contiguous: Yes  
Permitted: Yes  
Wet space: No  
Addition: No  
Conversion: No

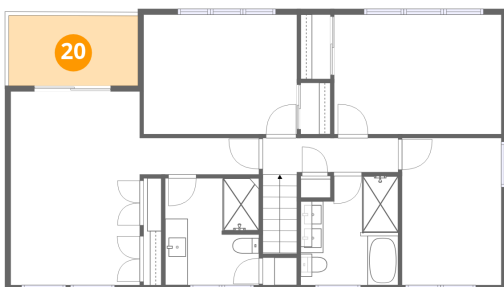
**19** Floor 3 - Bedroom



Dimensions: 8'9" x 12'11"  
Area: 113 sq. ft  
Counted as living area: Yes

Heated: Yes  
Finished: Yes  
Enclosed: Yes  
Contiguous: Yes  
Permitted: Yes  
Wet space: No  
Addition: No  
Conversion: No

**20** Floor 3 - Balcony

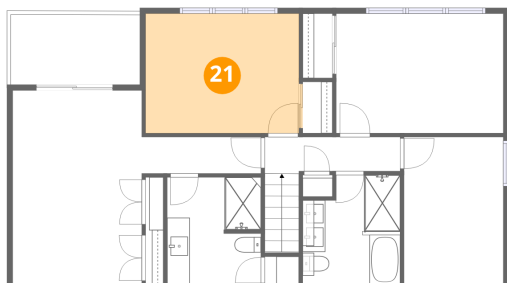


Dimensions: 11'4" x 6'2"  
Area: 70 sq. ft  
Counted as living area: No

Heated: No  
Finished: No  
Enclosed: No  
Contiguous: Yes  
Permitted: Yes  
Wet space: No  
Addition: No  
Conversion: No

17 Highland Crescent, Victoria Highlands, Cambridge, Waterloo County, Ontario, Canada, N1S 1L5

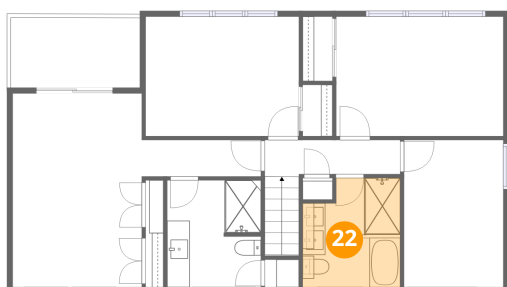
**21** Floor 3 - Bedroom



Dimensions: 13'10" x 10'6"  
Area: 144 sq. ft  
Counted as living area: Yes

Heated: Yes  
Finished: Yes  
Enclosed: Yes  
Contiguous: Yes  
Permitted: Yes  
Wet space: No  
Addition: No  
Conversion: No

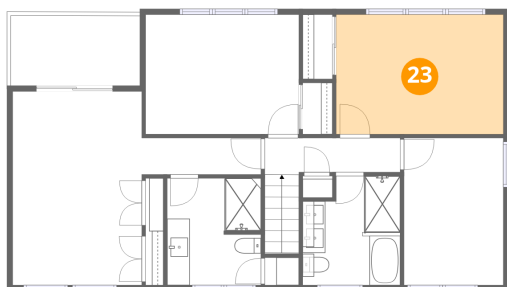
**22** Floor 3 - Bath



Dimensions: 8'7" x 9'7"  
Area: 76 sq. ft  
Counted as living area: Yes

Heated: Yes  
Finished: Yes  
Enclosed: Yes  
Contiguous: Yes  
Permitted: Yes  
Wet space: Yes  
Addition: No  
Conversion: No

**23** Floor 3 - Bedroom

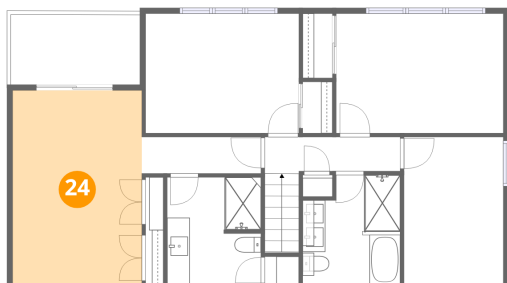


Dimensions: 14'9" x 10'6"  
Area: 155 sq. ft  
Counted as living area: Yes

Heated: Yes  
Finished: Yes  
Enclosed: Yes  
Contiguous: Yes  
Permitted: Yes  
Wet space: No  
Addition: No  
Conversion: No

17 Highland Crescent, Victoria Highlands, Cambridge, Waterloo County, Ontario, Canada, N1S 1L5

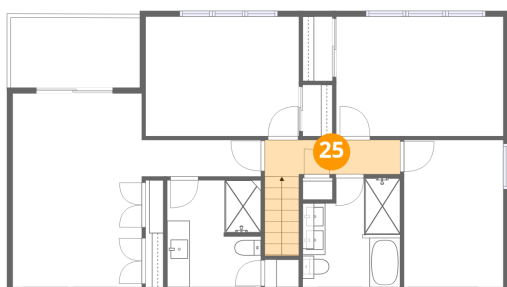
**24** Floor 3 - Primary Bedroom



Dimensions: 11'5" x 17'1"  
Area: 194 sq. ft  
Counted as living area: Yes

Heated: Yes  
Finished: Yes  
Enclosed: Yes  
Contiguous: Yes  
Permitted: Yes  
Wet space: No  
Addition: No  
Conversion: No

**25** Floor 3 - Hall



Dimensions: 11'11" x 3'3"  
Area: 58 sq. ft  
Counted as living area: Yes

Heated: Yes  
Finished: Yes  
Enclosed: Yes  
Contiguous: Yes  
Permitted: Yes  
Wet space: No  
Addition: No  
Conversion: No