

Home report

120 Nyle Ridge Road, Wirtz, Franklin County, Virginia, United States, 24184



Total Area: 2090 sq. ft

Floor 1: 0 sq. ft, Floor 2: 1250 sq. ft, Floor 3: 840 sq. ft

Excluded: Basement 945 sq. ft, Hall 52 sq. ft, Outdoor Porch 280 sq. ft, Low Ceiling 86 sq. ft

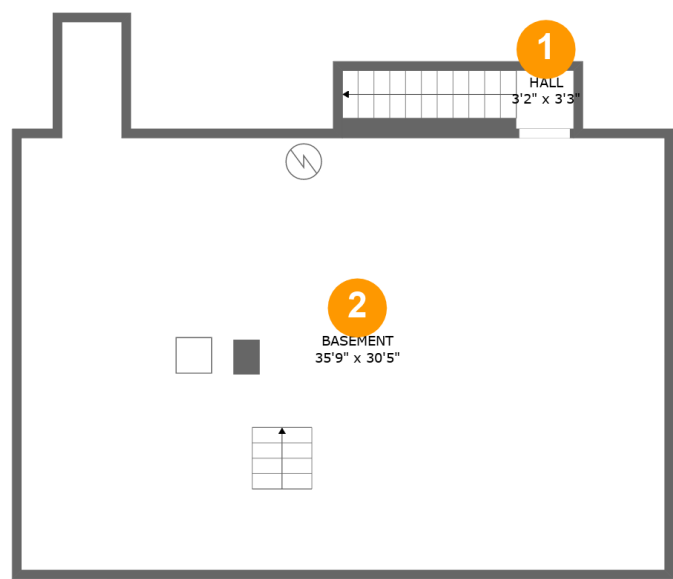
Property summary

 **3** Floors

 **3** Bedrooms

 **3** Bathrooms

120 Nyle Ridge Road, Wirtz, Franklin County, Virginia, United States, 24184



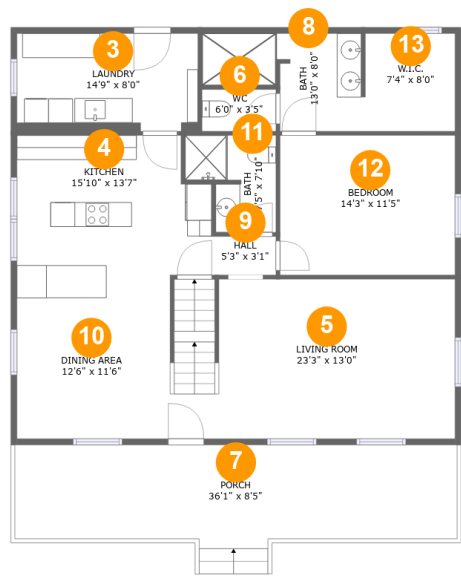
Room dimensions

Floor 1 Total:0sqft Excluded: 997sqft

#		Max Dimensions	sqft	Included
1	Hall	3'2" x 3'3"	42 sq. ft	No
2	Basement	35'9" x 30'5"	878 sq. ft	No

Home report

120 Nyle Ridge Road, Wirtz, Franklin County, Virginia, United States, 24184



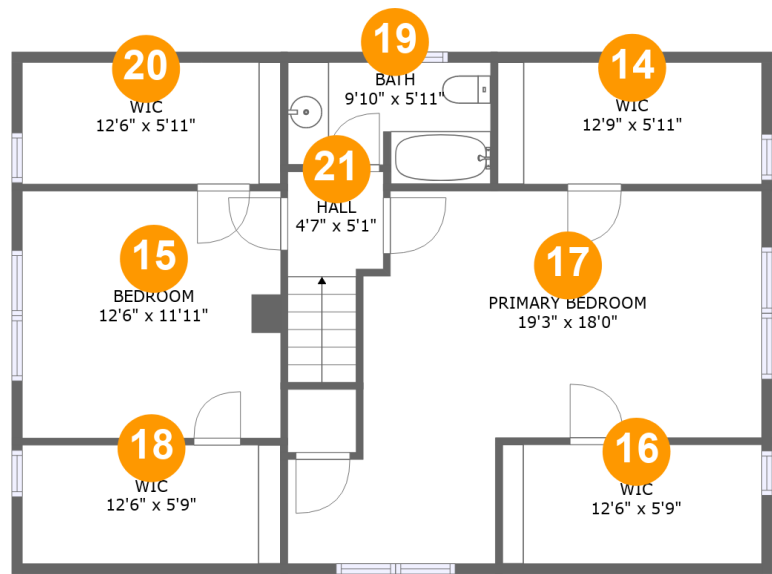
Room dimensions

Floor 2 Total:1250sqft Excluded: 280sqft

#		Max Dimensions	sqft	Included
3	Laundry	14'9" x 8'0"	118 sq. ft	Yes
4	Kitchen	15'10" x 13'7"	195 sq. ft	Yes
5	Living Room	23'3" x 13'0"	298 sq. ft	Yes
6	WC	6'0" x 3'5"	21 sq. ft	Yes
7	Porch	36'1" x 8'5"	280 sq. ft	No
8	Bath	13'0" x 8'0"	80 sq. ft	Yes
9	Hall	5'3" x 3'1"	17 sq. ft	Yes
10	Dining Area	12'6" x 11'6"	143 sq. ft	Yes
11	Bath	7'5" x 7'10"	47 sq. ft	Yes
12	Bedroom	14'3" x 11'5"	162 sq. ft	Yes
13	W.I.C.	7'4" x 8'0"	58 sq. ft	Yes

Home report

120 Nyle Ridge Road, Wirtz, Franklin County, Virginia, United States, 24184



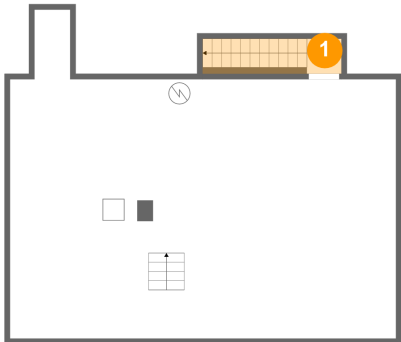
Room dimensions

Floor 3 Total:838sqft Excluded: 88sqft

#		Max Dimensions	sqft	Included
14	Wic	12'9" x 5'11"	60 sq. ft	Yes
15	Bedroom	12'6" x 11'11"	149 sq. ft	Yes
16	Wic	12'6" x 5'9"	57 sq. ft	Yes
17	Primary Bedroom	19'3" x 18'0"	281 sq. ft	Yes
18	Wic	12'6" x 5'9"	57 sq. ft	Yes
19	Bath	9'10" x 5'11"	52 sq. ft	Yes
20	Wic	12'6" x 5'11"	59 sq. ft	Yes
21	Hall	4'7" x 5'1"	40 sq. ft	Yes

120 Nyle Ridge Road, Wirtz, Franklin County, Virginia, United States, 24184

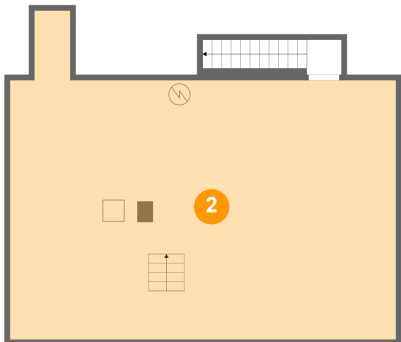
1 Floor 1 - Hall



Max Dimensions: 3'2" x 3'3"
Calculated Area: 42 sq. ft
Included: No

Heated: Yes
Finished: No
Enclosed: Yes
Contiguous: Yes
Permitted: Yes
Wet space: No
Addition: No
Conversion: No

2 Floor 1 - Basement

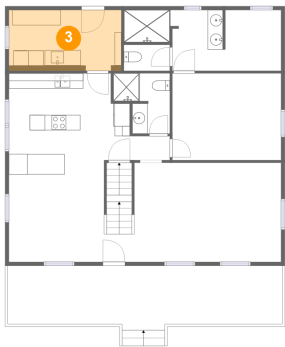


Max Dimensions: 35'9" x 30'5"
Calculated Area: 878 sq. ft
Included: No

Heated: Yes
Finished: No
Enclosed: Yes
Contiguous: Yes
Permitted: Yes
Wet space: No
Addition: No
Conversion: No

120 Nyle Ridge Road, Wirtz, Franklin County, Virginia, United States, 24184

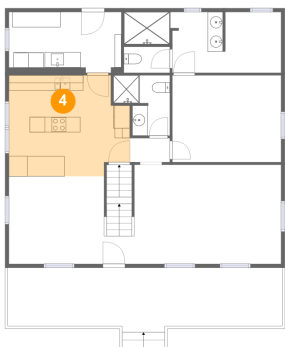
3 Floor 2 - Laundry



Max Dimensions: 14'9" x 8'0"
Calculated Area: 118 sq. ft
Included: Yes

Heated: Yes
Finished: Yes
Enclosed: Yes
Contiguous: Yes
Permitted: Yes
Wet space: No
Addition: No
Conversion: No

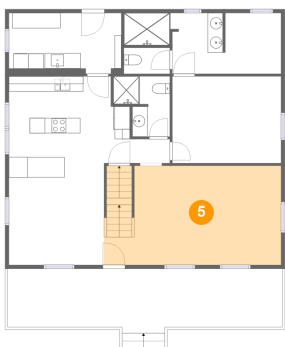
4 Floor 2 - Kitchen



Max Dimensions: 15'10" x 13'7"
Calculated Area: 195 sq. ft
Included: Yes

Heated: Yes
Finished: Yes
Enclosed: Yes
Contiguous: Yes
Permitted: Yes
Wet space: No
Addition: No
Conversion: No

5 Floor 2 - Living Room

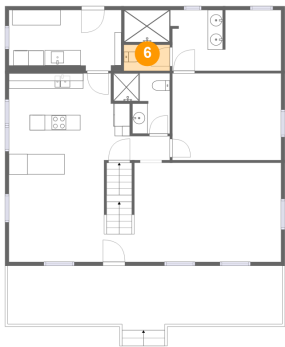


Max Dimensions: 23'3" x 13'0"
Calculated Area: 298 sq. ft
Included: Yes

Heated: Yes
Finished: Yes
Enclosed: Yes
Contiguous: Yes
Permitted: Yes
Wet space: No
Addition: No
Conversion: No

120 Nyle Ridge Road, Wirtz, Franklin County, Virginia, United States, 24184

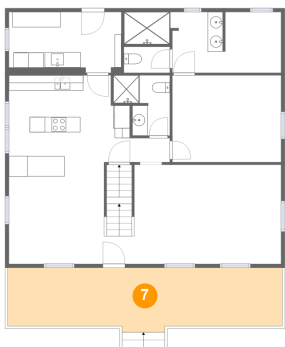
6 Floor 2 - WC



Max Dimensions: 6'0" x 3'5"
Calculated Area: 21 sq. ft
Included: Yes

Heated: Yes
Finished: Yes
Enclosed: Yes
Contiguous: Yes
Permitted: Yes
Wet space: Yes
Addition: No
Conversion: No

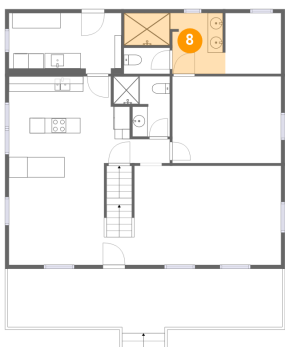
7 Floor 2 - Porch



Max Dimensions: 36'1" x 8'5"
Calculated Area: 280 sq. ft
Included: No

Heated: No
Finished: No
Enclosed: No
Contiguous: Yes
Permitted: Yes
Wet space: No
Addition: No
Conversion: No

8 Floor 2 - Bath

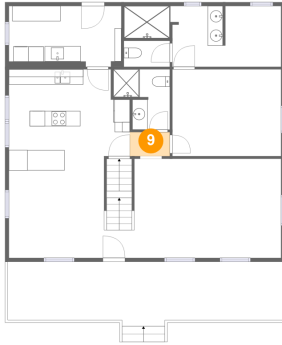


Max Dimensions: 13'0" x 8'0"
Calculated Area: 80 sq. ft
Included: Yes

Heated: Yes
Finished: Yes
Enclosed: Yes
Contiguous: Yes
Permitted: Yes
Wet space: Yes
Addition: No
Conversion: No

120 Nyle Ridge Road, Wirtz, Franklin County, Virginia, United States, 24184

9 Floor 2 - Hall



Max Dimensions: 5'3" x 3'1"
Calculated Area: 17 sq. ft
Included: Yes

Heated: Yes
Finished: Yes
Enclosed: Yes
Contiguous: Yes
Permitted: Yes
Wet space: No
Addition: No
Conversion: No

10 Floor 2 - Dining Area



Max Dimensions: 12'6" x 11'6"
Calculated Area: 143 sq. ft
Included: Yes

Heated: Yes
Finished: Yes
Enclosed: Yes
Contiguous: Yes
Permitted: Yes
Wet space: No
Addition: No
Conversion: No

11 Floor 2 - Bath

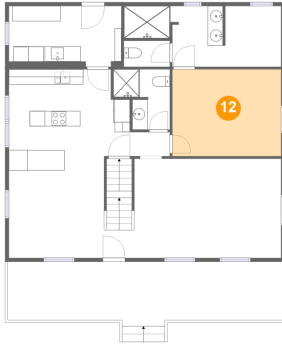


Max Dimensions: 7'5" x 7'10"
Calculated Area: 47 sq. ft
Included: Yes

Heated: Yes
Finished: Yes
Enclosed: Yes
Contiguous: Yes
Permitted: Yes
Wet space: Yes
Addition: No
Conversion: No

120 Nyle Ridge Road, Wirtz, Franklin County, Virginia, United States, 24184

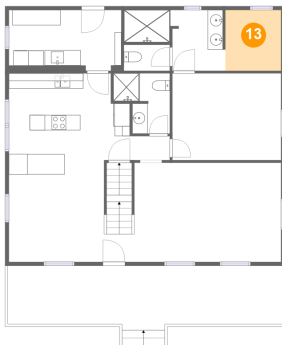
12 Floor 2 - Bedroom



Max Dimensions: 14'3" x 11'5"
Calculated Area: 162 sq. ft
Included: Yes

Heated: Yes
Finished: Yes
Enclosed: Yes
Contiguous: Yes
Permitted: Yes
Wet space: No
Addition: No
Conversion: No

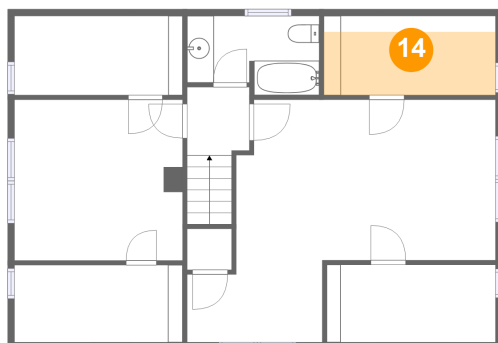
13 Floor 2 - W.I.C.



Max Dimensions: 7'4" x 8'0"
Calculated Area: 58 sq. ft
Included: Yes

Heated: Yes
Finished: Yes
Enclosed: Yes
Contiguous: Yes
Permitted: Yes
Wet space: No
Addition: No
Conversion: No

14 Floor 3 - Wic

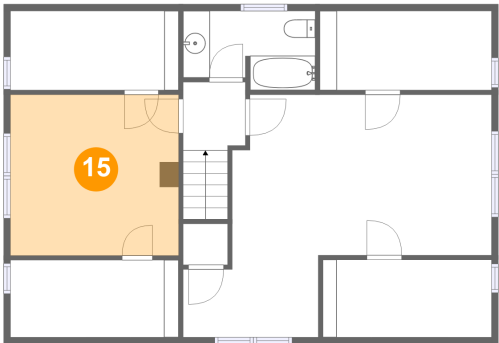


Max Dimensions: 12'9" x 5'11"
Calculated Area: 60 sq. ft
Included: Yes

Heated: Yes
Finished: Yes
Enclosed: Yes
Contiguous: Yes
Permitted: Yes
Wet space: No
Addition: No
Conversion: No

120 Nyle Ridge Road, Wirtz, Franklin County, Virginia, United States, 24184

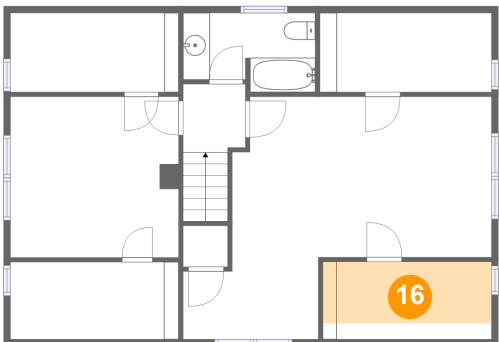
15 Floor 3 - Bedroom



Max Dimensions: 12'6" x 11'11"
Calculated Area: 149 sq. ft
Included: Yes

Heated: Yes
Finished: Yes
Enclosed: Yes
Contiguous: Yes
Permitted: Yes
Wet space: No
Addition: No
Conversion: No

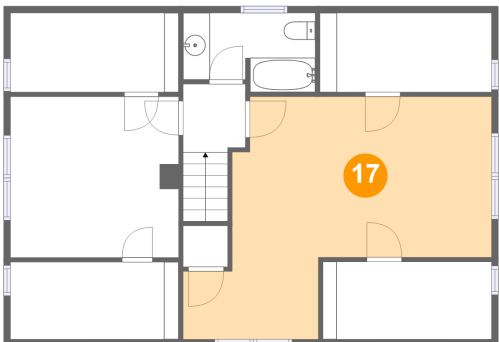
16 Floor 3 - Wic



Max Dimensions: 12'6" x 5'9"
Calculated Area: 57 sq. ft
Included: Yes

Heated: Yes
Finished: Yes
Enclosed: Yes
Contiguous: Yes
Permitted: Yes
Wet space: No
Addition: No
Conversion: No

17 Floor 3 - Primary Bedroom



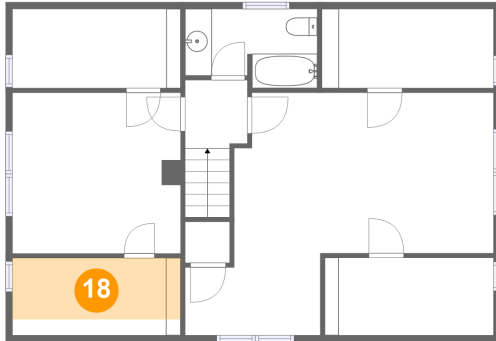
Max Dimensions: 19'3" x 18'0"
Calculated Area: 281 sq. ft
Included: Yes

Heated: Yes
Finished: Yes
Enclosed: Yes
Contiguous: Yes
Permitted: Yes
Wet space: No
Addition: No
Conversion: No

Home report

120 Nyle Ridge Road, Wirtz, Franklin County, Virginia, United States, 24184

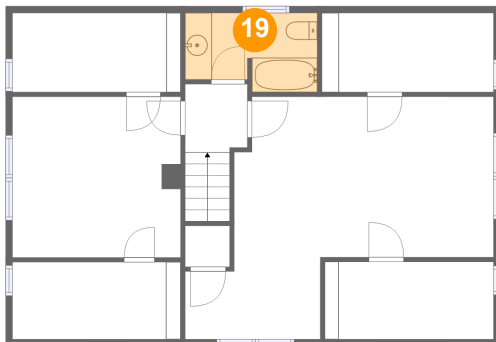
18 Floor 3 - Wic



Max Dimensions: 12'6" x 5'9"
Calculated Area: 57 sq. ft
Included: Yes

Heated: Yes
Finished: Yes
Enclosed: Yes
Contiguous: Yes
Permitted: Yes
Wet space: No
Addition: No
Conversion: No

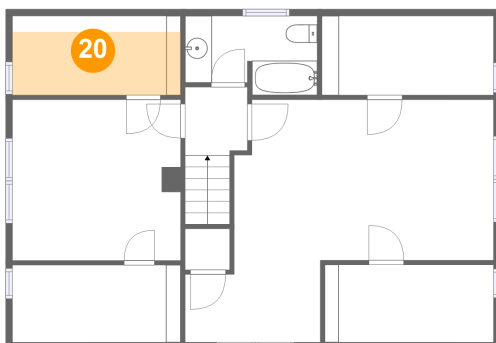
19 Floor 3 - Bath



Max Dimensions: 9'10" x 5'11"
Calculated Area: 52 sq. ft
Included: Yes

Heated: Yes
Finished: Yes
Enclosed: Yes
Contiguous: Yes
Permitted: Yes
Wet space: Yes
Addition: No
Conversion: No

20 Floor 3 - Wic

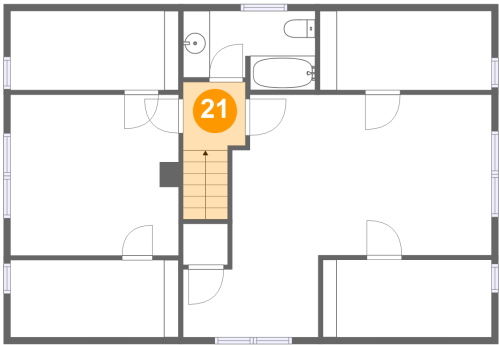


Max Dimensions: 12'6" x 5'11"
Calculated Area: 59 sq. ft
Included: Yes

Heated: Yes
Finished: Yes
Enclosed: Yes
Contiguous: Yes
Permitted: Yes
Wet space: No
Addition: No
Conversion: No

120 Nyle Ridge Road, Wirtz, Franklin County, Virginia, United States, 24184

21 Floor 3 - Hall



Max Dimensions: 4'7" x 5'1"
Calculated Area: 40 sq. ft
Included: Yes

Heated: Yes
Finished: Yes
Enclosed: Yes
Contiguous: Yes
Permitted: Yes
Wet space: No
Addition: No
Conversion: No