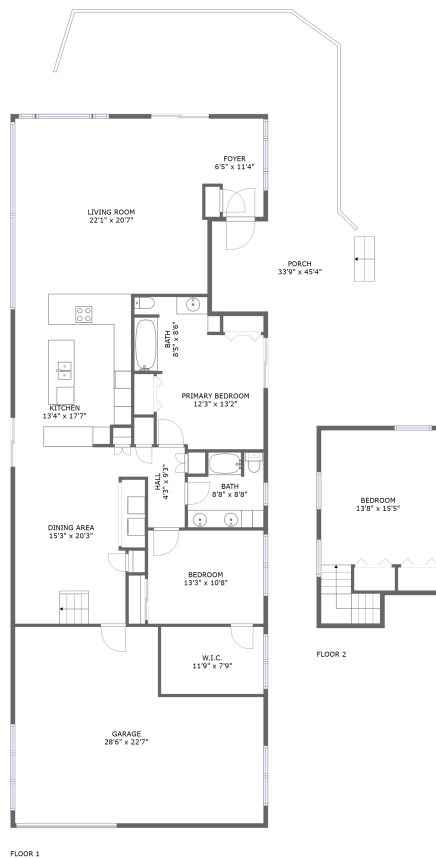



6526 Tunnel Loop Road, Grants Pass, Oregon 97526, United States



Property summary

 **1** Garages

 **3** Bedrooms

 **2** Bathrooms

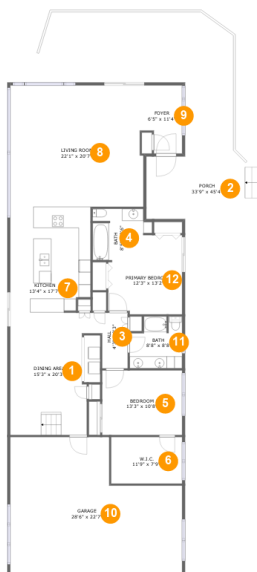
 **0** Half baths

 **2** Floors

 **2,085**
Gross living
area sqft

 **3,405**
Total sqft

6526 Tunnel Loop Road, Grants Pass, Oregon 97526, United States



Room dimensions

Floor 1

Total sqft: 3091 Living area: 1771

#		Dimensions	sqft	Counted as living area
1	Dining Area	15'3" x 20'3"	259 sq. ft	Yes
2	Porch	33'9" x 45'4"	741 sq. ft	No
3	Hall	4'3" x 9'3"	39 sq. ft	Yes
4	Bath	8'5" x 8'6"	71 sq. ft	Yes
5	Bedroom	13'3" x 10'8"	142 sq. ft	Yes
6	W.I.C.	11'9" x 7'9"	91 sq. ft	Yes
7	Kitchen	13'4" x 17'7"	227 sq. ft	Yes
8	Living Room	22'1" x 20'7"	446 sq. ft	Yes
9	Foyer	6'5" x 11'4"	66 sq. ft	Yes
10	Garage	28'6" x 22'7"	546 sq. ft	No
11	Bath	8'8" x 8'8"	68 sq. ft	Yes

6526 Tunnel Loop Road, Grants Pass, Oregon 97526, United States

#		Dimensions	sqft	Counted as living area
12	Primary Bedroom	12'3" x 13'2"	137 sq. ft	Yes

6526 Tunnel Loop Road, Grants Pass, Oregon 97526, United States



Room dimensions

Floor 2

Total sqft: 314 Living area: 314

#		Dimensions	sqft	Counted as living area
13	Bedroom	13'8" x 15'5"	245 sq. ft	Yes

6526 Tunnel Loop Road, Grants Pass, Oregon 97526, United States

1 Floor 1 - Dining Area



Dimensions: 15'3" x 20'3"
Area: 259 sq. ft
Counted as living area: Yes

Heated: Yes
Finished: Yes
Enclosed: Yes
Contiguous: Yes
Permitted: Yes
Wet space: No
Addition: No
Conversion: No

2 Floor 1 - Porch



Dimensions: 33'9" x 45'4"
Area: 741 sq. ft
Counted as living area: No

Heated: No
Finished: Yes
Enclosed: No
Contiguous: Yes
Permitted: Yes
Wet space: No
Addition: No
Conversion: No

6526 Tunnel Loop Road, Grants Pass, Oregon 97526, United States

3 Floor 1 - Hall



Dimensions: 4'3" x 9'3"
Area: 39 sq. ft
Counted as living area: Yes

Heated: Yes
Finished: Yes
Enclosed: Yes
Contiguous: Yes
Permitted: Yes
Wet space: No
Addition: No
Conversion: No

4 Floor 1 - Bath



Dimensions: 8'5" x 8'6"
Area: 71 sq. ft
Counted as living area: Yes

Heated: Yes
Finished: Yes
Enclosed: Yes
Contiguous: Yes
Permitted: Yes
Wet space: Yes
Addition: No
Conversion: No

5 Floor 1 - Bedroom



Dimensions: 13'3" x 10'8"
Area: 142 sq. ft
Counted as living area: Yes

Heated: Yes
Finished: Yes
Enclosed: Yes
Contiguous: Yes
Permitted: Yes
Wet space: No
Addition: No
Conversion: No

6526 Tunnel Loop Road, Grants Pass, Oregon 97526, United States

6 Floor 1 - W.I.C.



Dimensions: 11'9" x 7'9"
Area: 91 sq. ft
Counted as living area: Yes

Heated: Yes
Finished: Yes
Enclosed: Yes
Contiguous: Yes
Permitted: Yes
Wet space: No
Addition: No
Conversion: No

7 Floor 1 - Kitchen



Dimensions: 13'4" x 17'7"
Area: 227 sq. ft
Counted as living area: Yes

Heated: Yes
Finished: Yes
Enclosed: Yes
Contiguous: Yes
Permitted: Yes
Wet space: No
Addition: No
Conversion: No

8 Floor 1 - Living Room



Dimensions: 22'1" x 20'7"
Area: 446 sq. ft
Counted as living area: Yes

Heated: Yes
Finished: Yes
Enclosed: Yes
Contiguous: Yes
Permitted: Yes
Wet space: No
Addition: No
Conversion: No

6526 Tunnel Loop Road, Grants Pass, Oregon 97526, United States

9 Floor 1 - Foyer



Dimensions: 6'5" x 11'4"
Area: 66 sq. ft
Counted as living area: Yes

Heated: Yes
Finished: Yes
Enclosed: Yes
Contiguous: Yes
Permitted: Yes
Wet space: No
Addition: No
Conversion: No

10 Floor 1 - Garage



Dimensions: 28'6" x 22'7"
Area: 546 sq. ft
Counted as living area: No

Heated: No
Finished: No
Enclosed: Yes
Contiguous: Yes
Permitted: Yes
Wet space: No
Addition: No
Conversion: No

11 Floor 1 - Bath



Dimensions: 8'8" x 8'8"
Area: 68 sq. ft
Counted as living area: Yes

Heated: Yes
Finished: Yes
Enclosed: Yes
Contiguous: Yes
Permitted: Yes
Wet space: Yes
Addition: No
Conversion: No

6526 Tunnel Loop Road, Grants Pass, Oregon 97526,
United States

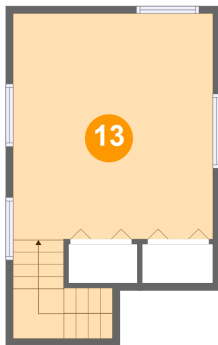
12 Floor 1 - Primary Bedroom



Dimensions: 12'3" x 13'2"
Area: 137 sq. ft
Counted as living area: Yes

Heated: Yes
Finished: Yes
Enclosed: Yes
Contiguous: Yes
Permitted: Yes
Wet space: No
Addition: No
Conversion: No

13 Floor 2 - Bedroom



Dimensions: 13'8" x 15'5"
Area: 245 sq. ft
Counted as living area: Yes

Heated: Yes
Finished: Yes
Enclosed: Yes
Contiguous: Yes
Permitted: Yes
Wet space: No
Addition: No
Conversion: No