

260 Fish Rd, Lufkin, TX, US




FLOOR 1

Property Summary

 **0** garages

 **1** bedrooms

 **2** bathrooms

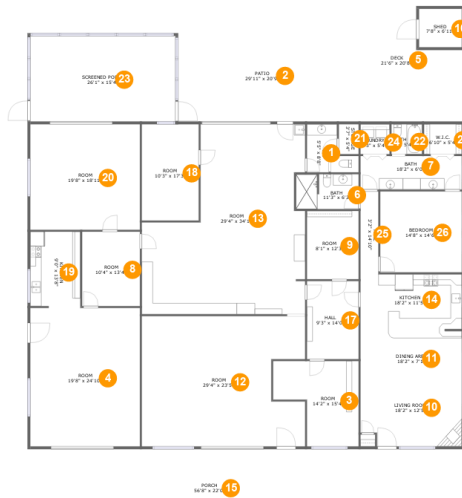
 **0** half baths

 **1** floors

 **4,595**
Gross Living Area sqft

 **6,820**
total sqft

260 Fish Rd, Lufkin, TX, US



Room Dimensions

Floor 1

Total sqft: 6820

Living area: 4595

#	Room name	Dimensions	Area (sqft)	Counted as Living Area
1	Wc	5'5" x 8'8"	42 sq. ft	Yes
2	Patio	29'11" x 20'9"	583 sq. ft	No
3	Room	14'2" x 15'4"	184 sq. ft	Yes
4	Room	19'8" x 24'10"	489 sq. ft	Yes
5	Deck	21'6" x 20'8"	414 sq. ft	No
6	Bath	11'3" x 6'3"	69 sq. ft	Yes
7	Bath	18'2" x 6'0"	109 sq. ft	Yes
8	Room	10'4" x 13'4"	139 sq. ft	Yes
9	Room	8'1" x 12'3"	114 sq. ft	Yes
10	Living Room	18'2" x 12'5"	218 sq. ft	Yes
11	Dining Area	18'2" x 7'1"	129 sq. ft	Yes

Scan captured on Thu, 24 Oct 2024 19:33:10 GMT

Information is calculated by CubiCasa technology; deemed highly reliable but not guaranteed.

260 Fish Rd,Lufkin,TX,US

#	Room name	Dimensions	Area (sqft)	Counted as Living Area
12	Room	29'4" x 23'5"	640 sq. ft	Yes
13	Room	29'4" x 34'1"	800 sq. ft	Yes
14	Kitchen	18'2" x 11'5"	208 sq. ft	Yes
15	Porch	56'8" x 22'0"	710 sq. ft	No
16	Shed	7'8" x 6'11"	53 sq. ft	No
17	Hall	9'3" x 14'0"	130 sq. ft	Yes
18	Room	10'3" x 17'3"	177 sq. ft	Yes
19	Kitchen	9'0" x 13'8"	122 sq. ft	Yes
20	Room	19'8" x 18'11"	373 sq. ft	Yes
21	Storage	3'7" x 5'4"	19 sq. ft	No
22	Bath	5'6" x 5'4"	30 sq. ft	Yes
23	Screened Porch	26'1" x 15'4"	400 sq. ft	No
24	Laundry	5'3" x 5'4"	28 sq. ft	Yes
25	Hall	3'2" x 14'10"	48 sq. ft	Yes
26	Bedroom	14'8" x 14'6"	213 sq. ft	Yes
27	W.i.c.	6'10" x 5'4"	37 sq. ft	Yes

260 Fish Rd,Lufkin,TX,US

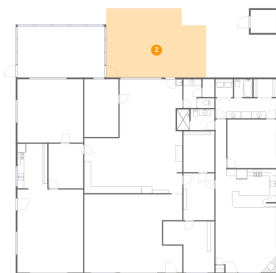
1 Floor 1 - Wc



Dimensions: 5'5" x 8'8"
Area: 42 sq. ft
Counted as Living Area:
Yes

Heated: Yes
Finished: Yes
Enclosed: Yes
Contiguous:
Yes
Permitted: Yes
Wet Space: Yes
Addition: No
Conversion: No

2 Floor 1 - Patio



Dimensions: 29'11" x 20'9"
Area: 583 sq. ft
Counted as Living Area: No

Heated: No
Finished: Yes
Enclosed: No
Contiguous: Yes
Permitted: Yes
Wet Space: No
Addition: No
Conversion: No

260 Fish Rd,Lufkin,TX,US

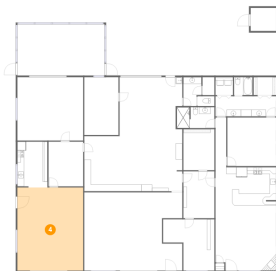
3 Floor 1 - Room



Dimensions: 14'2" x 15'4"
Area: 184 sq. ft
Counted as Living Area:
Yes

Heated: Yes
Finished: Yes
Enclosed: Yes
Contiguous:
Yes
Permitted: Yes
Wet Space: No
Addition: No
Conversion: No

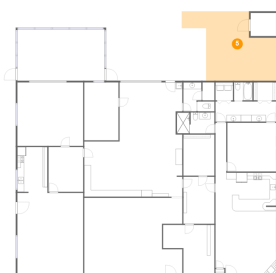
4 Floor 1 - Room



Dimensions: 19'8" x 24'10"
Area: 489 sq. ft
Counted as Living Area:
Yes

Heated: Yes
Finished: Yes
Enclosed: Yes
Contiguous:
Yes
Permitted: Yes
Wet Space: No
Addition: No
Conversion: No

5 Floor 1 - Deck



Dimensions: 21'6" x 20'8"
Area: 414 sq. ft
Counted as Living Area: No

Heated: No
Finished: Yes
Enclosed: No
Contiguous: Yes
Permitted: Yes
Wet Space: No
Addition: No
Conversion: No

260 Fish Rd,Lufkin,TX,US

6 Floor 1 - Bath



Dimensions: 11'3" x 6'3"
Area: 69 sq. ft
Counted as Living Area:
Yes

Heated: Yes
Finished: Yes
Enclosed: Yes
Contiguous:
Yes
Permitted: Yes
Wet Space: Yes
Addition: No
Conversion: No

7 Floor 1 - Bath



Dimensions: 18'2" x 6'0"
Area: 109 sq. ft
Counted as Living Area:
Yes

Heated: Yes
Finished: Yes
Enclosed: Yes
Contiguous:
Yes
Permitted: Yes
Wet Space: Yes
Addition: No
Conversion: No

8 Floor 1 - Room



Dimensions: 10'4" x 13'4"
Area: 139 sq. ft
Counted as Living Area:
Yes

Heated: Yes
Finished: Yes
Enclosed: Yes
Contiguous:
Yes
Permitted: Yes
Wet Space: No
Addition: No
Conversion: No

260 Fish Rd,Lufkin,TX,US

9 Floor 1 - Room



Dimensions: 8'1" x 12'3"
Area: 114 sq. ft
Counted as Living Area:
Yes

Heated: Yes
Finished: Yes
Enclosed: Yes
Contiguous:
Yes
Permitted: Yes
Wet Space: No
Addition: No
Conversion: No

10 Floor 1 - Living Room



Dimensions: 18'2" x 12'5"
Area: 218 sq. ft
Counted as Living Area:
Yes

Heated: Yes
Finished: Yes
Enclosed: Yes
Contiguous:
Yes
Permitted: Yes
Wet Space: No
Addition: No
Conversion: No

11 Floor 1 - Dining Area



Dimensions: 18'2" x 7'1"
Area: 129 sq. ft
Counted as Living Area:
Yes

Heated: Yes
Finished: Yes
Enclosed: Yes
Contiguous:
Yes
Permitted: Yes
Wet Space: No
Addition: No
Conversion: No

260 Fish Rd,Lufkin,TX,US

12 Floor 1 - Room



Dimensions: 29'4" x 23'5"
Area: 640 sq. ft
Counted as Living Area:
Yes

Heated: Yes
Finished: Yes
Enclosed: Yes
Contiguous:
Yes
Permitted: Yes
Wet Space: No
Addition: No
Conversion: No

13 Floor 1 - Room



Dimensions: 29'4" x 34'1"
Area: 800 sq. ft
Counted as Living Area:
Yes

Heated: Yes
Finished: Yes
Enclosed: Yes
Contiguous:
Yes
Permitted: Yes
Wet Space: No
Addition: No
Conversion: No

14 Floor 1 - Kitchen



Dimensions: 18'2" x 11'5"
Area: 208 sq. ft
Counted as Living Area:
Yes

Heated: Yes
Finished: Yes
Enclosed: Yes
Contiguous:
Yes
Permitted: Yes
Wet Space: No
Addition: No
Conversion: No

260 Fish Rd, Lufkin, TX, US

15 Floor 1 - Porch



Dimensions: 56'8" x 22'0"
Area: 710 sq. ft
Counted as Living Area: No

Heated: No
Finished: Yes
Enclosed: No
Contiguous: Yes
Permitted: Yes
Wet Space: No
Addition: No
Conversion: No

16 Floor 1 - Shed



Dimensions: 7'8" x 6'11"
Area: 53 sq. ft
Counted as Living Area: No

Heated: No
Finished: No
Enclosed: No
Contiguous: Yes
Permitted: Yes
Wet Space: No
Addition: No
Conversion: No

17 Floor 1 - Hall



Dimensions: 9'3" x 14'0"
Area: 130 sq. ft
Counted as Living Area: Yes

Heated: Yes
Finished: Yes
Enclosed: Yes
Contiguous: Yes
Permitted: Yes
Wet Space: No
Addition: No
Conversion: No

260 Fish Rd,Lufkin,TX,US

18 Floor 1 - Room



Dimensions: 10'3" x 17'3"
Area: 177 sq. ft
Counted as Living Area:
Yes

Heated: Yes
Finished: Yes
Enclosed: Yes
Contiguous:
Yes
Permitted: Yes
Wet Space: No
Addition: No
Conversion: No

19 Floor 1 - Kitchen



Dimensions: 9'0" x 13'8"
Area: 122 sq. ft
Counted as Living Area:
Yes

Heated: Yes
Finished: Yes
Enclosed: Yes
Contiguous:
Yes
Permitted: Yes
Wet Space: No
Addition: No
Conversion: No

20 Floor 1 - Room



Dimensions: 19'8" x 18'11"
Area: 373 sq. ft
Counted as Living Area:
Yes

Heated: Yes
Finished: Yes
Enclosed: Yes
Contiguous:
Yes
Permitted: Yes
Wet Space: No
Addition: No
Conversion: No

260 Fish Rd, Lufkin, TX, US

21 Floor 1 - Storage



Dimensions: 3'7" x 5'4"
Area: 19 sq. ft
Counted as Living Area: No

Heated: No
Finished: No
Enclosed: No
Contiguous: Yes
Permitted: Yes
Wet Space: No
Addition: No
Conversion: No

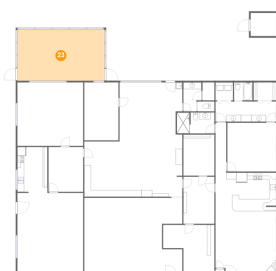
22 Floor 1 - Bath



Dimensions: 5'6" x 5'4"
Area: 30 sq. ft
Counted as Living Area: Yes

Heated: Yes
Finished: Yes
Enclosed: Yes
Contiguous: Yes
Permitted: Yes
Wet Space: Yes
Addition: No
Conversion: No

23 Floor 1 - Screened Porch



Dimensions: 26'1" x 15'4"
Area: 400 sq. ft
Counted as Living Area: No

Heated: No
Finished: Yes
Enclosed: No
Contiguous: Yes
Permitted: Yes
Wet Space: No
Addition: No
Conversion: No

260 Fish Rd,Lufkin,TX,US

24 Floor 1 - Laundry



Dimensions: 5'3" x 5'4"
Area: 28 sq. ft
Counted as Living Area:
Yes

Heated: Yes
Finished: Yes
Enclosed: Yes
Contiguous:
Yes
Permitted: Yes
Wet Space: No
Addition: No
Conversion: No

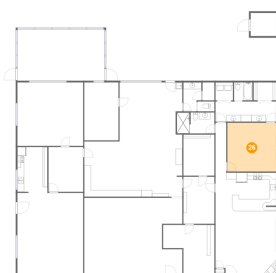
25 Floor 1 - Hall



Dimensions: 3'2" x 14'10"
Area: 48 sq. ft
Counted as Living Area:
Yes

Heated: Yes
Finished: Yes
Enclosed: Yes
Contiguous:
Yes
Permitted: Yes
Wet Space: No
Addition: No
Conversion: No

26 Floor 1 - Bedroom



Dimensions: 14'8" x 14'6"
Area: 213 sq. ft
Counted as Living Area:
Yes

Heated: Yes
Finished: Yes
Enclosed: Yes
Contiguous:
Yes
Permitted: Yes
Wet Space: No
Addition: No
Conversion: No

260 Fish Rd,Lufkin,TX,US

27 Floor 1 - W.i.c.



Dimensions: 6'10" x 5'4"
Area: 37 sq. ft
Counted as Living Area:
Yes

Heated: Yes
Finished: Yes
Enclosed: Yes
Contiguous:
Yes
Permitted: Yes
Wet Space: No
Addition: No
Conversion: No