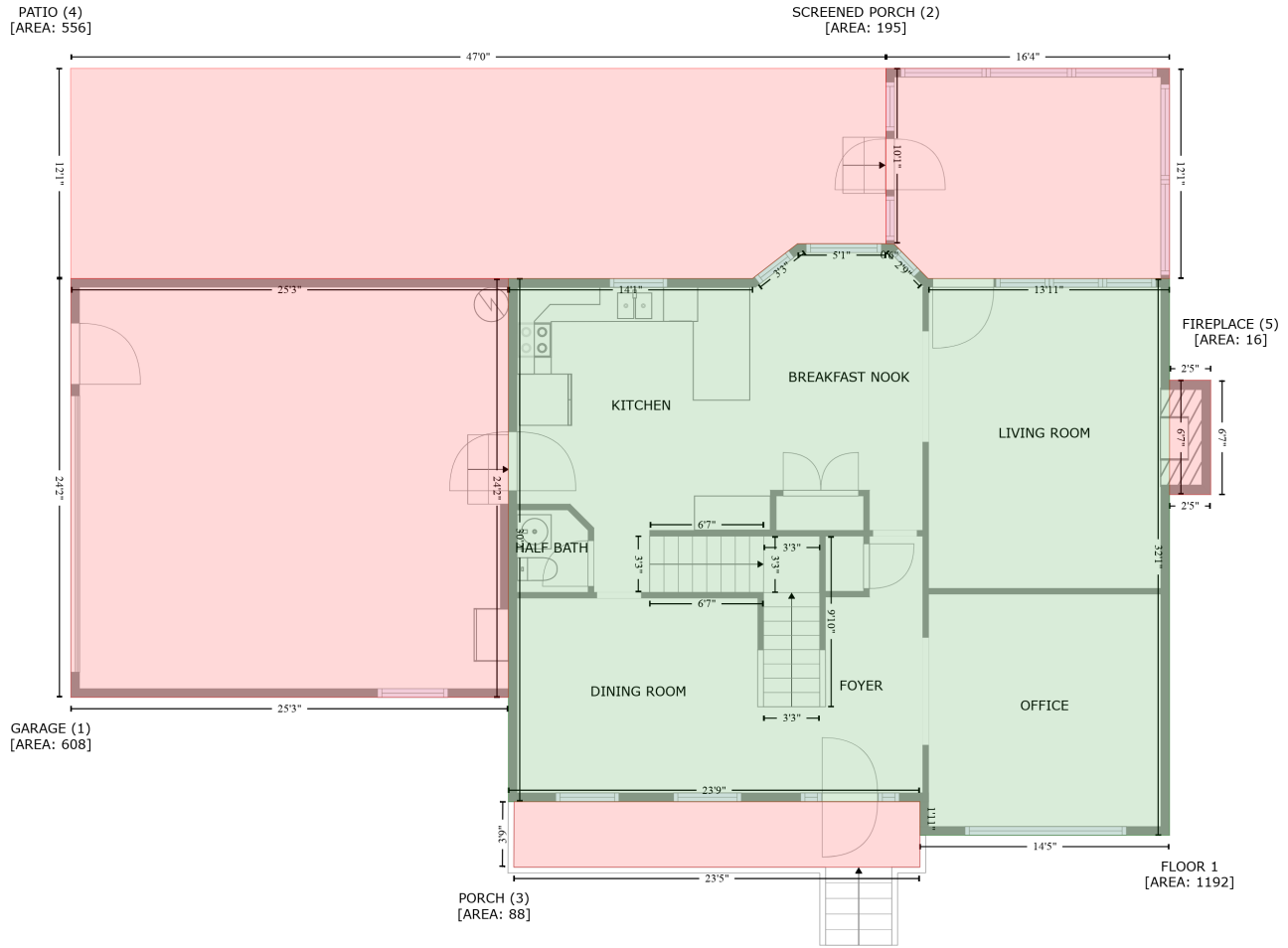


119 Doric Court, Preston, Cary, Wake County, North Carolina, United States, 27519

Gross Living Area: 3232 sq. ft



Space	Area (sq. ft)	Calculation
FLOOR 1 (Living area)	1192	$-\left((665.7 + 671.7) * (216.4 - 216.8) + (671.7 + 694.9) * (216.8 - 240.5) + (694.9 + 861.9) * (240.5 - 240.5) + (861.9 + 861.9) * (240.5 - 625.3) + (861.9 + 689.3) * (625.3 - 625.3) + (689.3 + 689.3) * (625.3 - 602.1) + (689.3 + 404.6) * (602.1 - 602.1) + (404.6 + 404.6) * (602.1 - 240.5) + (404.6 + 573.6) * (240.5 - 240.5) + (573.6 + 604.6) * (240.5 - 216.4) + (604.6 + 665.7) * (216.4 - 216.4)\right) * 0.5 * 0.00694$
GARAGE (Non-living area)	608	$-\left((404.6 + 404.6) * (240.5 - 530) + (404.6 + 102) * (530 - 530) + (102 + 102) * (530 - 240.5) + (102 + 404.6) * (240.5 - 240.5)\right) * 0.5 * 0.00694$
SCREENED PORCH (Non-living area)	195	$-\left((861.9 + 861.9) * (95.2 - 240.5) + (861.9 + 694.9) * (240.5 - 240.5) + (694.9 + 671.7) * (240.5 - 216.8) + (671.7 + 665.7) * (216.8 - 216.4) + (665.7 + 665.7) * (216.4 - 95.2) + (665.7 + 861.9) * (95.2 - 95.2)\right) * 0.5 * 0.00694$
PORCH (Non-living area)	88	$-\left((689.3 + 689.3) * (602.1 - 647.4) + (689.3 + 408.4) * (647.4 - 647.4) + (408.4 + 408.6) * (647.4 - 602.1) + (408.6 + 689.3) * (602.1 - 602.1)\right) * 0.5 * 0.00694$
PATIO (Non-living area)	556	$-\left((665.7 + 665.7) * (95.2 - 216.4) + (665.7 + 604.6) * (216.4 - 216.4) + (604.6 + 573.6) * (216.4 - 240.5) + (573.6 + 102) * (240.5 - 240.5) + (102 + 101.8) * (240.5 - 95.2) + (101.8 + 665.7) * (95.2 - 95.2)\right) * 0.5 * 0.00694$

119 Doric Court, Preston, Cary, Wake County, North Carolina, United States, 27519

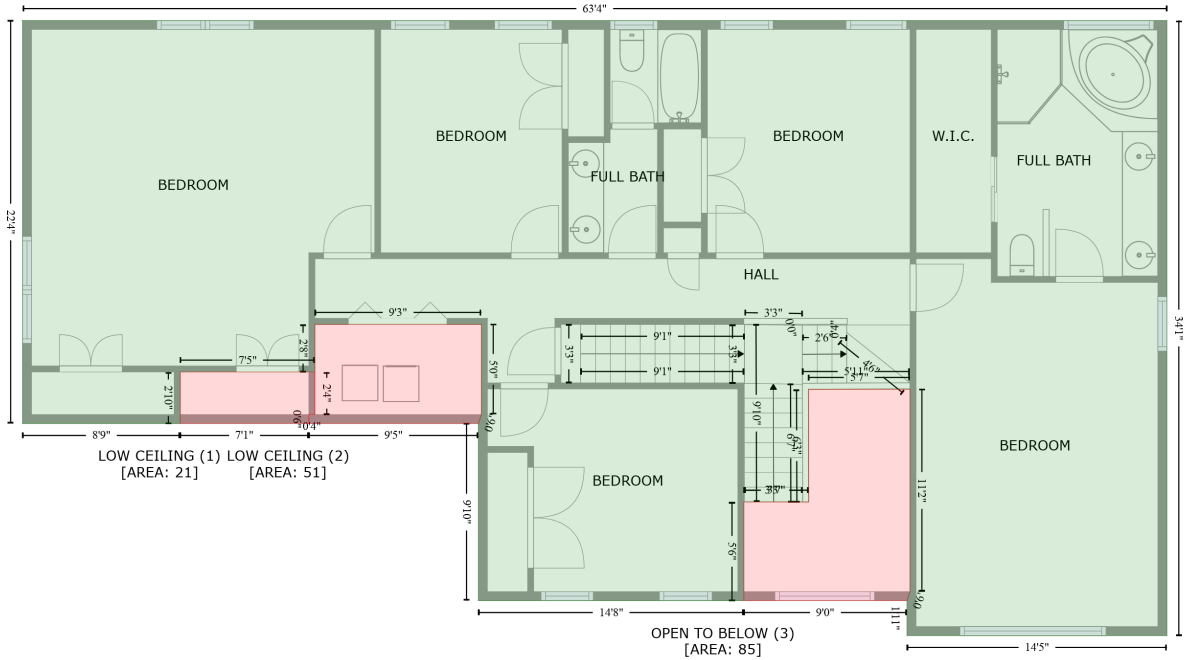
Gross Living Area: 3232 sq. ft

Space	Area (sq. ft)	Calculation <small>Coordinate Polygon Area Algorithm using inches</small>
FIREPLACE (Non-living area)	16	$-((890.4 + 890.4) * (310.7 - 389.8) + (890.4 + 861.9) * (389.8 - 389.8) + (861.9 + 861.9) * (389.8 - 310.7) + (861.9 + 890.4) * (310.7 - 310.7)) * 0.5 * 0.00694$

119 Doric Court, Preston, Cary, Wake County, North Carolina, United States, 27519

Gross Living Area: 3232 sq. ft

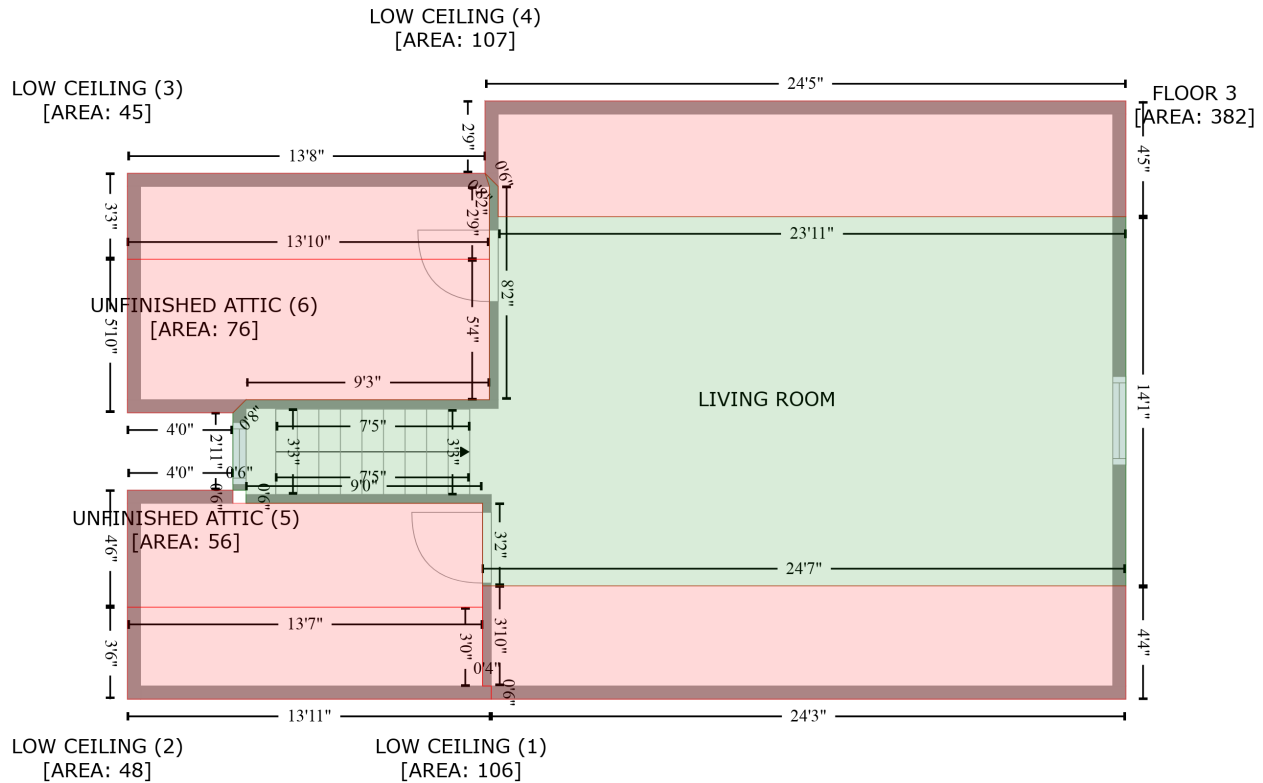
FLOOR 2
[AREA: 1658]



Space	Area (sq. ft)	Calculation
FLOOR 2 (Living area)	1658	Coordinate Polygon Area Algorithm using inches $-((861.9 + 861.9) * (216.4 - 625.3) + (861.9 + 689.3) * (625.3 - 625.3) + (689.3 + 689.3) * (625.3 - 602.1) + (689.3 + 691.3) * (602.1 - 596.1) + (691.3 + 691.3) * (596.1 - 461.6) + (691.3 + 623.8) * (461.6 - 461.6) + (623.8 + 624) * (461.6 - 536.5) + (624 + 580.9) * (536.5 - 536.5) + (580.9 + 580.9) * (536.5 - 602.1) + (580.9 + 404.6) * (602.1 - 602.1) + (404.6 + 404.6) * (602.1 - 484.3) + (404.6 + 406.6) * (484.3 - 478.3) + (406.6 + 406.6) * (478.3 - 418.4) + (406.6 + 296.1) * (418.4 - 418.4) + (296.1 + 296.1) * (418.4 - 450.1) + (296.1 + 206.6) * (450.1 - 450.1) + (206.6 + 206.6) * (450.1 - 484.3) + (206.6 + 101.9) * (484.3 - 484.3) + (101.9 + 101.9) * (484.3 - 216.4) + (101.9 + 861.9) * (216.4 - 216.4)) * 0.5 + 0.00694$
LOW CEILING (Non-living area)	21	$-((296.1 + 296.1) * (450.1 - 478.3) + (296.1 + 292.1) * (478.3 - 478.3) + (292.1 + 292.1) * (478.3 - 484.3) + (292.1 + 206.6) * (484.3 - 484.3) + (206.6 + 206.6) * (484.3 - 450.1) + (206.6 + 296.1) * (450.1 - 450.1)) * 0.5 + 0.00694$
LOW CEILING (Non-living area)	51	$-((406.6 + 406.6) * (418.4 - 478.3) + (406.6 + 404.6) * (478.3 - 484.3) + (404.6 + 292.1) * (484.3 - 484.3) + (292.1 + 292.1) * (484.3 - 478.3) + (292.1 + 296.1) * (478.3 - 478.3) + (296.1 + 296.1) * (478.3 - 418.4) + (296.1 + 406.6) * (418.4 - 418.4)) * 0.5 + 0.00694$
OPEN TO BELOW (Non-living area)	85	$-((691.3 + 691.3) * (461.6 - 596.1) + (691.3 + 689.3) * (596.1 - 602.1) + (689.3 + 580.9) * (602.1 - 602.1) + (580.9 + 580.9) * (602.1 - 536.5) + (580.9 + 624) * (536.5 - 536.5) + (624 + 623.8) * (536.5 - 461.6) + (623.8 + 691.3) * (461.6 - 461.6)) * 0.5 + 0.00694$

119 Doric Court, Preston, Cary, Wake County, North Carolina, United States, 27519

Gross Living Area: 3232 sq. ft



Space	Area (sq. ft)	Calculation
FLOOR 3 (Living area)	382	Coordinate Polygon Area Algorithm using inches $-((568.4 + 574.4) * (310.5 - 316.5) + (574.4 + 574.4) * (316.5 - 330.4) + (574.4 + 861.9) * (330.4 - 330.4) + (861.9 + 861.9) * (330.4 - 499.4) + (861.9 + 567.3) * (499.4 - 499.4) + (567.3 + 567.3) * (499.4 - 461.6) + (567.3 + 458.9) * (461.6 - 461.6) + (458.9 + 458.9) * (461.6 - 455.6) + (458.9 + 452.9) * (455.6 - 455.6) + (452.9 + 452.9) * (455.6 - 420.2) + (452.9 + 458.9) * (420.2 - 414.2) + (458.9 + 570.4) * (414.2 - 414.2) + (570.4 + 570.4) * (414.2 - 316.5) + (570.4 + 568.4) * (316.5 - 310.5)) * 0.5 + 0.00694$
LOW CEILING (Non-living area)	106	$-((861.9 + 861.9) * (499.4 - 551.3) + (861.9 + 571.3) * (551.3 - 551.3) + (571.3 + 571.3) * (551.3 - 545.3) + (571.3 + 567.3) * (545.3 - 545.3) + (567.3 + 567.3) * (545.3 - 499.4) + (567.3 + 861.9) * (499.4 - 499.4)) * 0.5 + 0.00694$
LOW CEILING (Non-living area)	48	$-((567.3 + 567.3) * (509.2 - 545.3) + (567.3 + 571.3) * (545.3 - 545.3) + (571.3 + 571.3) * (545.3 - 551.3) + (571.3 + 404.6) * (551.3 - 551.3) + (404.6 + 404.6) * (551.3 - 509.2) + (404.6 + 567.3) * (509.2 - 509.2)) * 0.5 + 0.00694$
LOW CEILING (Non-living area)	45	$-((568.4 + 570.4) * (310.5 - 316.5) + (570.4 + 570.4) * (316.5 - 349.9) + (570.4 + 404.6) * (349.9 - 349.9) + (404.6 + 404.6) * (349.9 - 310.5) + (404.6 + 568.4) * (310.5 - 310.5)) * 0.5 + 0.00694$
LOW CEILING (Non-living area)	107	$-((861.9 + 861.9) * (277.5 - 330.4) + (861.9 + 574.4) * (330.4 - 330.4) + (574.4 + 574.4) * (330.4 - 316.5) + (574.4 + 568.4) * (316.5 - 310.5) + (568.4 + 568.4) * (310.5 - 277.5) + (568.4 + 861.9) * (277.5 - 277.5)) * 0.5 + 0.00694$
UNFINISHED ATTIC (Non-living area)	56	$-((452.9 + 452.9) * (455.6 - 461.6) + (452.9 + 567.3) * (461.6 - 461.6) + (567.3 + 567.3) * (461.6 - 509.2) + (567.3 + 404.6) * (509.2 - 509.2) + (404.6 + 404.6) * (509.2 - 455.6) + (404.6 + 452.9) * (455.6 - 455.6)) * 0.5 + 0.00694$
UNFINISHED ATTIC	76	$-((570.4 + 570.4) * (349.9 - 414.2) + (570.4 + 458.9) * (414.2 - 414.2) + (458.9 + 452.9) * (414.2 -$

119 Doric Court, Preston, Cary, Wake County, North Carolina, United States, 27519

Gross Living Area: 3232 sq. ft

Space	Area (sq. ft)	Calculation <small>Coordinate Polygon Area Algorithm using inches</small>
(Non-living area)		$\frac{420.2 + (452.9 + 404.6) * (420.2 - 420.2) + (404.6 + 404.6) * (420.2 - 349.9) + (404.6 + 570.4) * (349.9 - 349.9)}{2} * 0.5 * 0.00694$