



ELEVATION A - 2,300 SQ FT  
ELEVATION B - 2,310 SQ FT  
ELEVATION C - 2,300 SQ FT  
ELEVATION D - 2,315 SQ FT

# THE LEYBURN



ELEVATION A - 2,300 SQ FT



ELEVATION B - 2,310 SQ FT



ELEVATION C - 2,300 SQ FT



ELEVATION D - 2,315 SQ FT

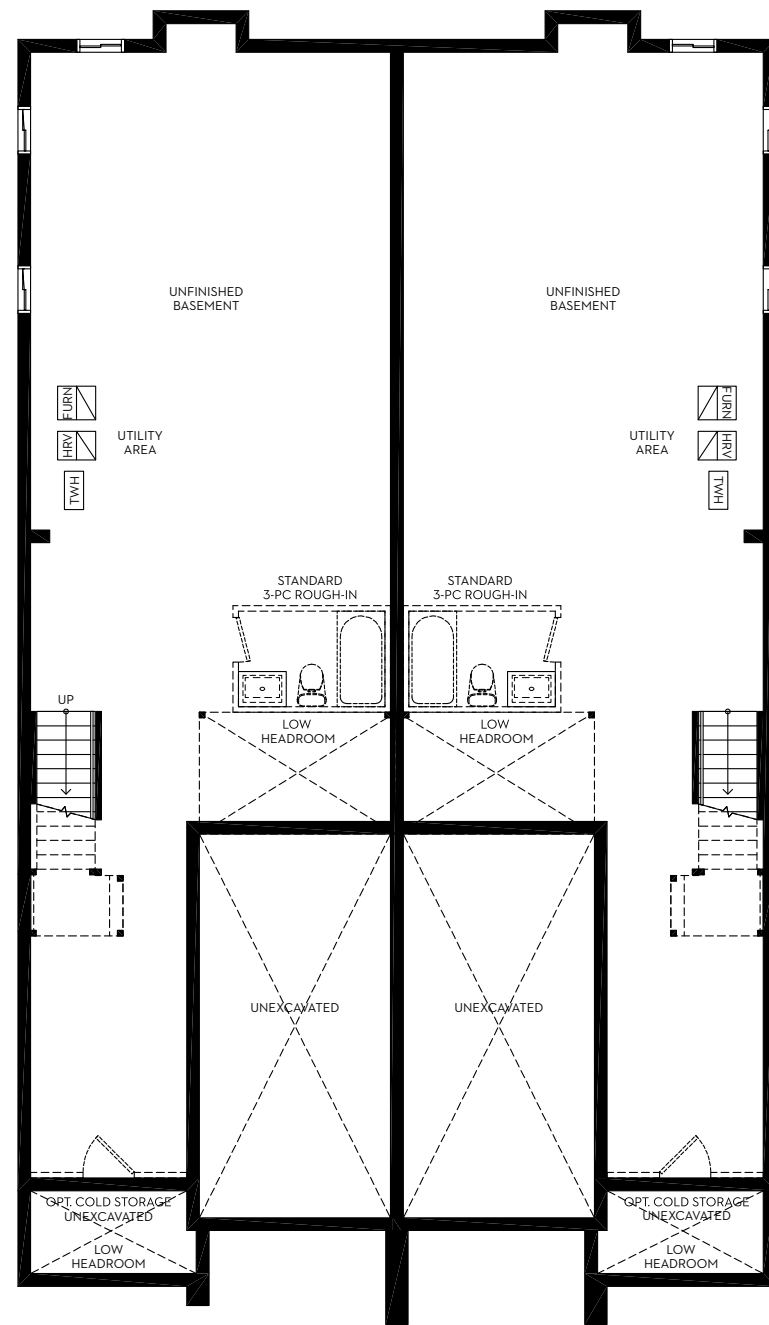


# THE LEYBURN

ELEVATION A - 2,300 SQ FT  
 ELEVATION B - 2,310 SQ FT  
 ELEVATION C - 2,300 SQ FT  
 ELEVATION D - 2,315 SQ FT

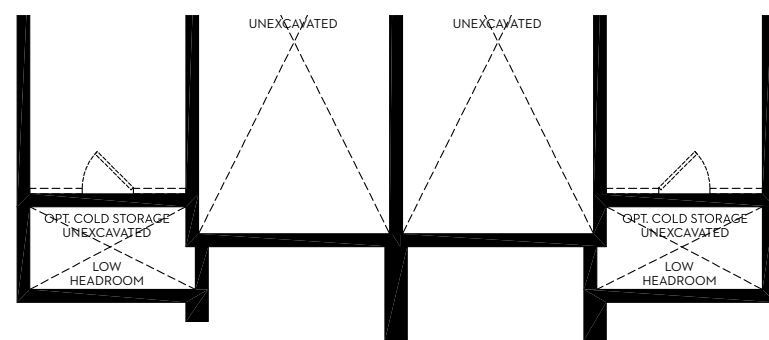
PBSD-10

## BASEMENT



ELEVATION A

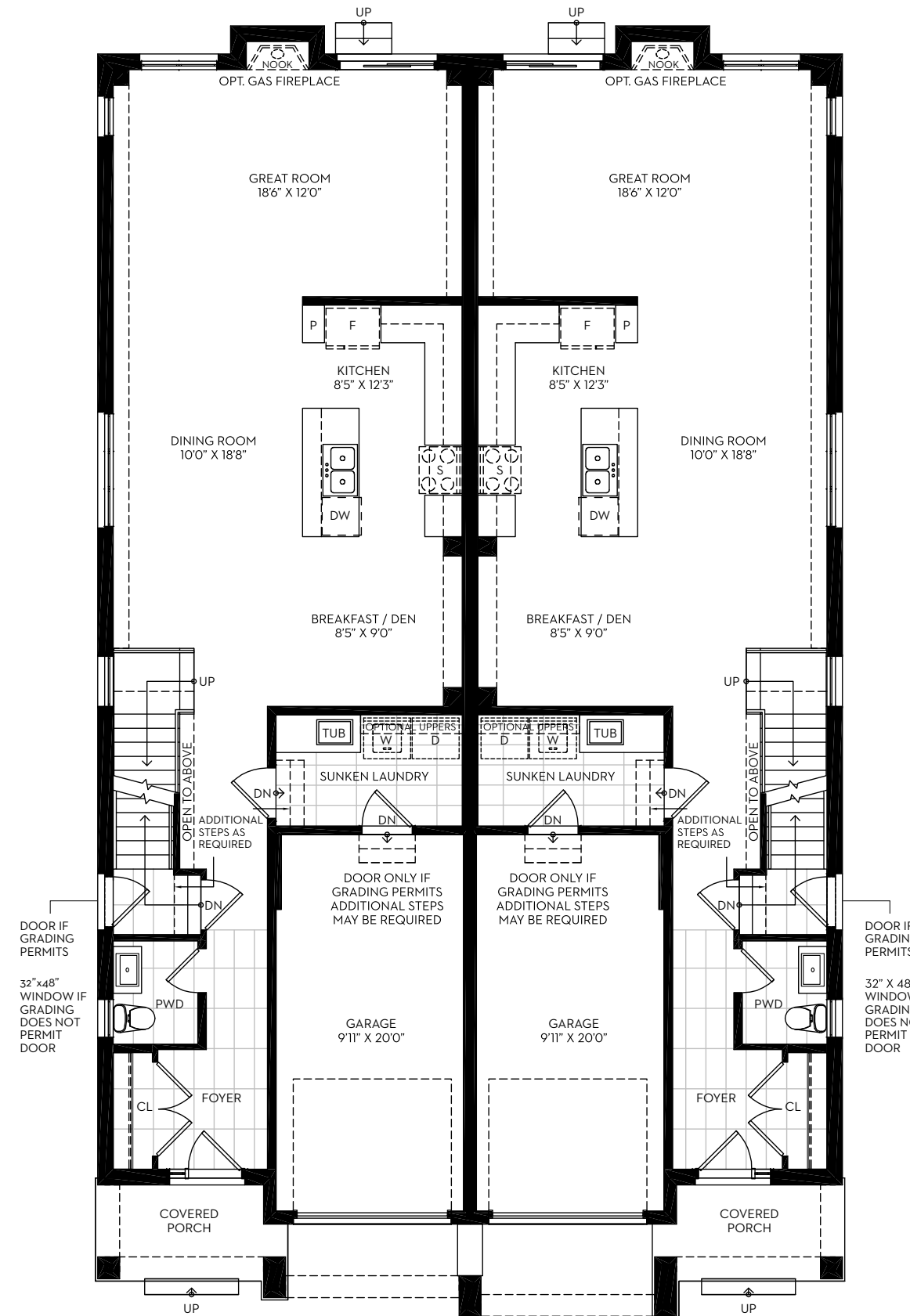
ELEVATION B



ELEVATION C

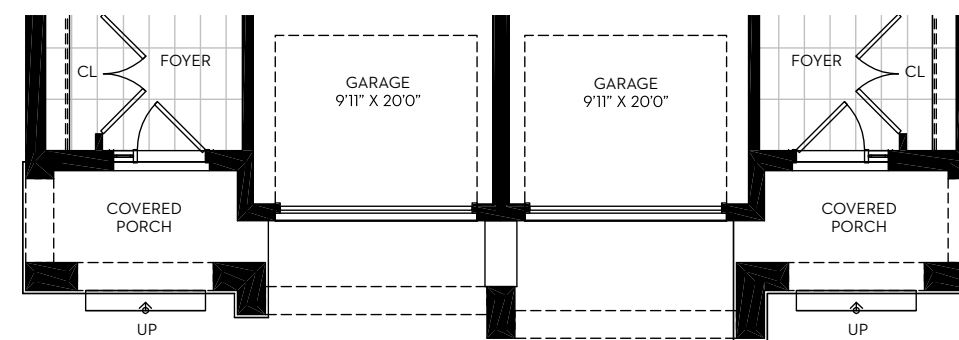
ELEVATION D

## GROUND FLOOR



ELEVATION A

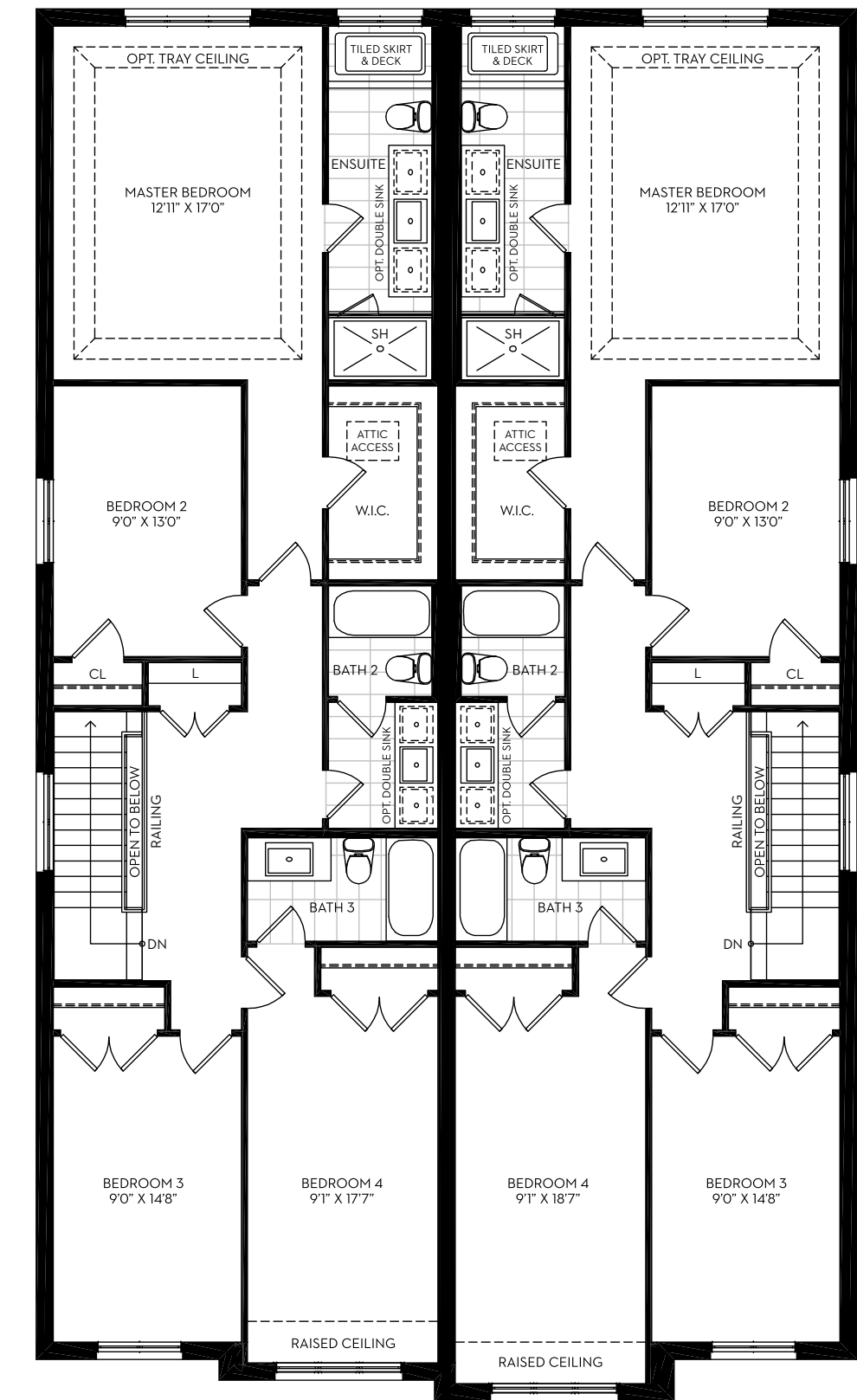
ELEVATION B



ELEVATION C

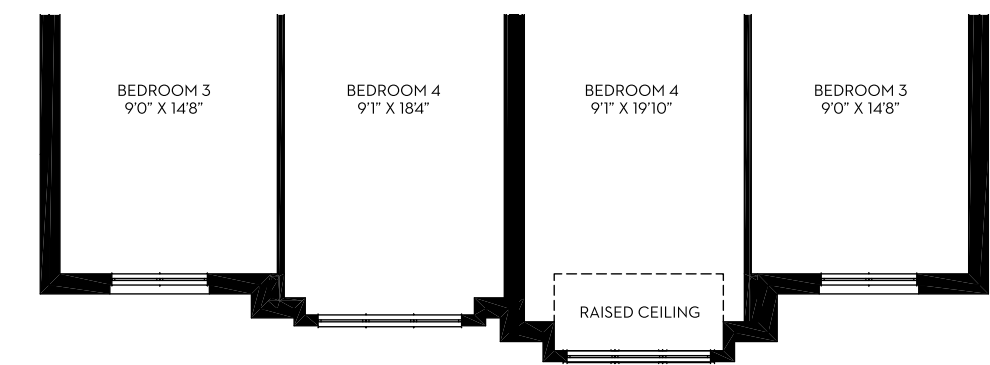
ELEVATION D

## SECOND FLOOR



ELEVATION A

ELEVATION B



ELEVATION C

ELEVATION D