

Home report

7246 North Meade Avenue, Wildwood, Chicago, Cook County, Illinois, United States, 60646




Total Area: 2370 sq. ft


Below Ground: 0 sq. ft, Below Ground: 633 sq. ft, Floor 3: 1047 sq. ft, Floor 4: 690 sq. ft
Excluded: Garage 475 sq. ft, Utility 44 sq. ft, Undefined 9 sq. ft, Deck 272 sq. ft, Porch 32 sq. ft, Low ceiling 131 sq. ft, Walls: 226 sq. ft

Property summary

 **4** Floors

 **4** Bedrooms

 **3** Bathrooms

 **1** Garages

Home report

7246 North Meade Avenue, Wildwood, Chicago, Cook County, Illinois, United States, 60646



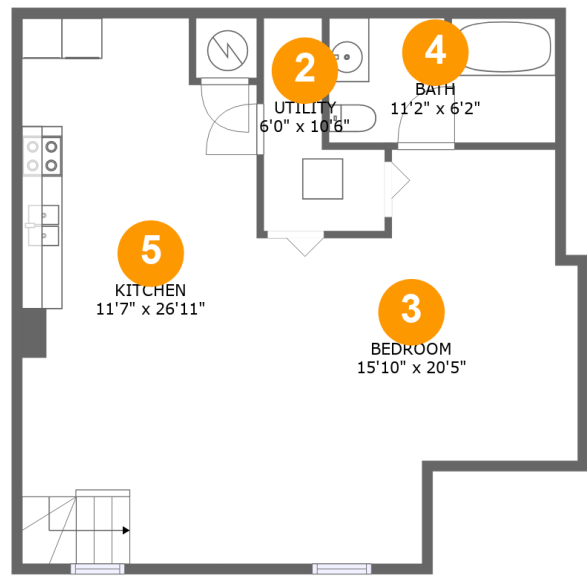
Room dimensions

Floor 1 Below ground Total:0sqft Excluded: 475sqft

#		Max Dimensions	sqft	Included
1	Garage	21'11" x 21'8"	475 sq. ft	No

Home report

7246 North Meade Avenue, Wildwood, Chicago, Cook County, Illinois, United States, 60646



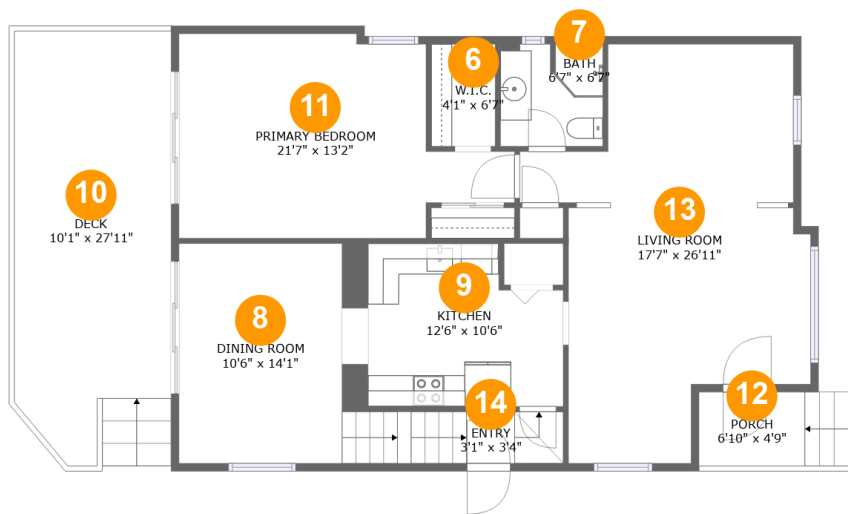
Room dimensions

Floor 2 Below ground Total:633sqft Excluded: 53sqft

#		Max Dimensions	sqft	Included
2	Utility	6'0" x 10'6"	43 sq. ft	No
3	Bedroom	15'10" x 20'5"	249 sq. ft	Yes
4	Bath	11'2" x 6'2"	68 sq. ft	Yes
5	Kitchen	11'7" x 26'11"	301 sq. ft	Yes

Home report

7246 North Meade Avenue, Wildwood, Chicago, Cook County, Illinois, United States, 60646



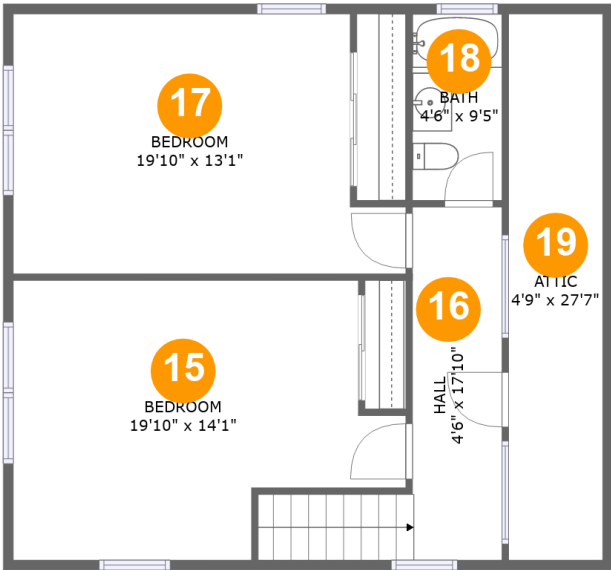
Room dimensions

Floor 3 Total:1047sqft Excluded: 304sqft

#		Max Dimensions	sqft	Included
6	W.I.C.	4'1" x 6'7"	27 sq. ft	Yes
7	Bath	6'7" x 6'7"	42 sq. ft	Yes
8	Dining Room	10'6" x 14'1"	148 sq. ft	Yes
9	Kitchen	12'6" x 10'6"	119 sq. ft	Yes
10	Deck	10'1" x 27'11"	272 sq. ft	No
11	Primary Bedroom	21'7" x 13'2"	224 sq. ft	Yes
12	Porch	6'10" x 4'9"	32 sq. ft	No
13	Living Room	17'7" x 26'11"	358 sq. ft	Yes
14	Entry	3'1" x 3'4"	47 sq. ft	Yes

Home report

7246 North Meade Avenue, Wildwood, Chicago, Cook County, Illinois, United States, 60646



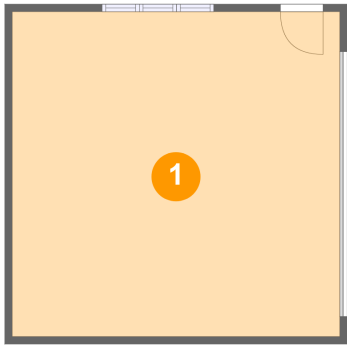
Room dimensions

Floor 4 Total:690sqft Excluded: 131sqft

#		Max Dimensions	sqft	Included
15	Bedroom	19'10" x 14'1"	235 sq. ft	Yes
16	Hall	4'6" x 17'10"	106 sq. ft	Yes
17	Bedroom	19'10" x 13'1"	233 sq. ft	Yes
18	Bath	4'6" x 9'5"	43 sq. ft	Yes
19	Attic	4'9" x 27'7"	131 sq. ft	No

7246 North Meade Avenue, Wildwood, Chicago, Cook County,
Illinois, United States, 60646

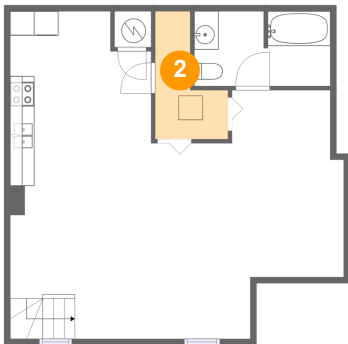
1 Floor 1 - Garage



Max Dimensions: 21'11" x 21'8"
Calculated Area: 475 sq. ft
Included: No

Heated: No
Finished: No
Enclosed: Yes
Contiguous: Yes
Permitted: Yes
Wet space: No
Addition: No
Conversion: No

2 Floor 2 - Utility



Max Dimensions: 6'0" x 10'6"
Calculated Area: 43 sq. ft
Included: No

Heated: Yes
Finished: No
Enclosed: Yes
Contiguous: Yes
Permitted: Yes
Wet space: No
Addition: No
Conversion: No

7246 North Meade Avenue, Wildwood, Chicago, Cook County,
Illinois, United States, 60646

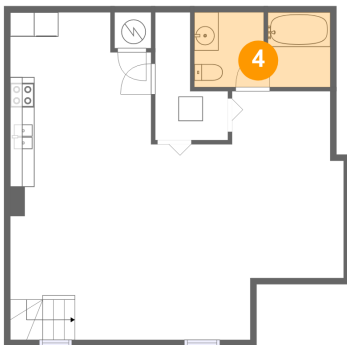
3 Floor 2 - Bedroom



Max Dimensions: 15'10" x 20'5"
Calculated Area: 249 sq. ft
Included: Yes

Heated: Yes
Finished: Yes
Enclosed: Yes
Contiguous: Yes
Permitted: Yes
Wet space: No
Addition: No
Conversion: No

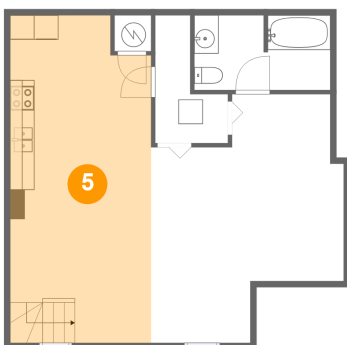
4 Floor 2 - Bath



Max Dimensions: 11'2" x 6'2"
Calculated Area: 68 sq. ft
Included: Yes

Heated: Yes
Finished: Yes
Enclosed: Yes
Contiguous: Yes
Permitted: Yes
Wet space: Yes
Addition: No
Conversion: No

5 Floor 2 - Kitchen



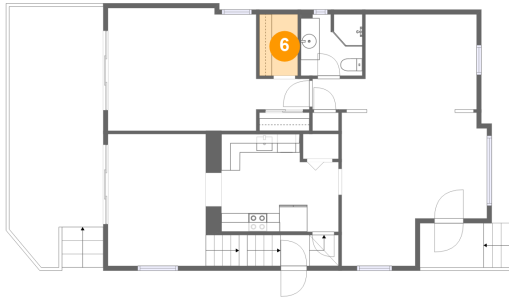
Max Dimensions: 11'7" x 26'11"
Calculated Area: 301 sq. ft
Included: Yes

Heated: Yes
Finished: Yes
Enclosed: Yes
Contiguous: Yes
Permitted: Yes
Wet space: No
Addition: No
Conversion: No

Home report

7246 North Meade Avenue, Wildwood, Chicago, Cook County, Illinois, United States, 60646

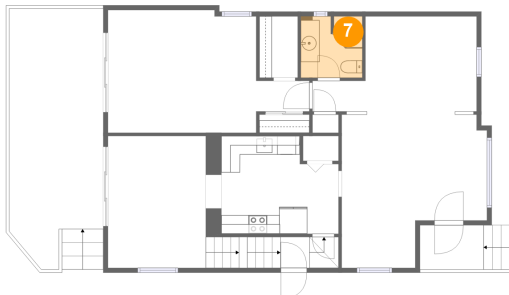
6 Floor 3 - W.I.C.



Max Dimensions: 4'1" x 6'7"
Calculated Area: 27 sq. ft
Included: Yes

Heated: Yes
Finished: Yes
Enclosed: Yes
Contiguous: Yes
Permitted: Yes
Wet space: No
Addition: No
Conversion: No

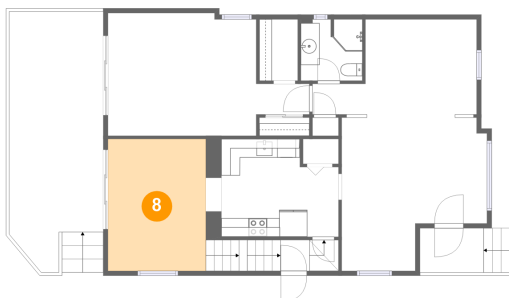
7 Floor 3 - Bath



Max Dimensions: 6'7" x 6'7"
Calculated Area: 42 sq. ft
Included: Yes

Heated: Yes
Finished: Yes
Enclosed: Yes
Contiguous: Yes
Permitted: Yes
Wet space: Yes
Addition: No
Conversion: No

8 Floor 3 - Dining Room

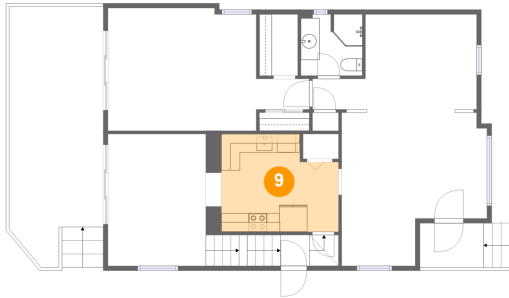


Max Dimensions: 10'6" x 14'1"
Calculated Area: 148 sq. ft
Included: Yes

Heated: Yes
Finished: Yes
Enclosed: Yes
Contiguous: Yes
Permitted: Yes
Wet space: No
Addition: No
Conversion: No

7246 North Meade Avenue, Wildwood, Chicago, Cook County,
Illinois, United States, 60646

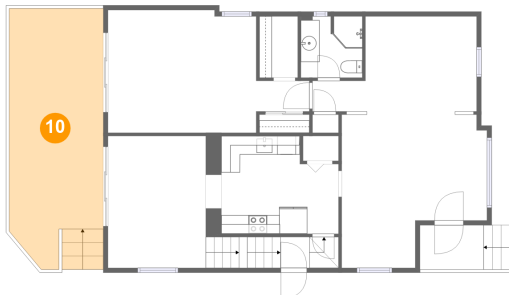
9 Floor 3 - Kitchen



Max Dimensions: 12'6" x 10'6"
Calculated Area: 119 sq. ft
Included: Yes

Heated: Yes
Finished: Yes
Enclosed: Yes
Contiguous: Yes
Permitted: Yes
Wet space: No
Addition: No
Conversion: No

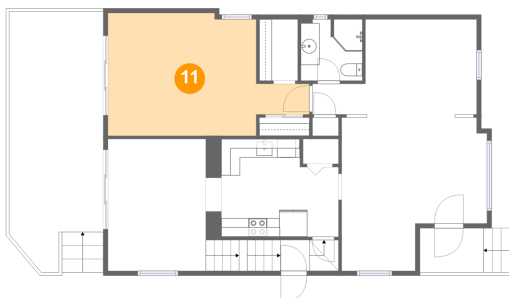
10 Floor 3 - Deck



Max Dimensions: 10'1" x 27'11"
Calculated Area: 272 sq. ft
Included: No

Heated: No
Finished: Yes
Enclosed: No
Contiguous: Yes
Permitted: Yes
Wet space: No
Addition: No
Conversion: No

11 Floor 3 - Primary Bedroom



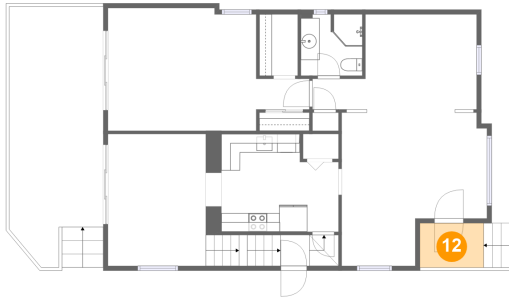
Max Dimensions: 21'7" x 13'2"
Calculated Area: 224 sq. ft
Included: Yes

Heated: Yes
Finished: Yes
Enclosed: Yes
Contiguous: Yes
Permitted: Yes
Wet space: No
Addition: No
Conversion: No

Home report

7246 North Meade Avenue, Wildwood, Chicago, Cook County, Illinois, United States, 60646

12 Floor 3 - Porch



Max Dimensions: 6'10" x 4'9"
Calculated Area: 32 sq. ft
Included: No

Heated: No
Finished: Yes
Enclosed: No
Contiguous: Yes
Permitted: Yes
Wet space: No
Addition: No
Conversion: No

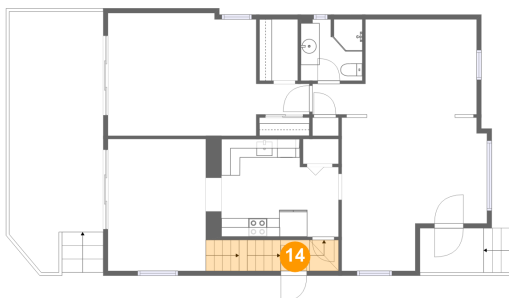
13 Floor 3 - Living Room



Max Dimensions: 17'7" x 26'11"
Calculated Area: 358 sq. ft
Included: Yes

Heated: Yes
Finished: Yes
Enclosed: Yes
Contiguous: Yes
Permitted: Yes
Wet space: No
Addition: No
Conversion: No

14 Floor 3 - Entry

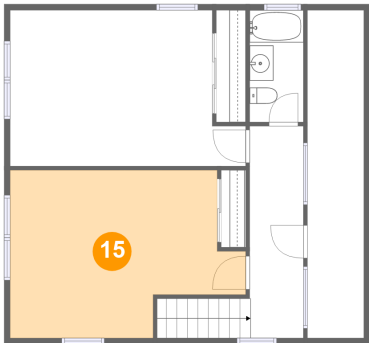


Max Dimensions: 3'1" x 3'4"
Calculated Area: 47 sq. ft
Included: Yes

Heated: Yes
Finished: Yes
Enclosed: Yes
Contiguous: Yes
Permitted: Yes
Wet space: No
Addition: No
Conversion: No

7246 North Meade Avenue, Wildwood, Chicago, Cook County, Illinois, United States, 60646

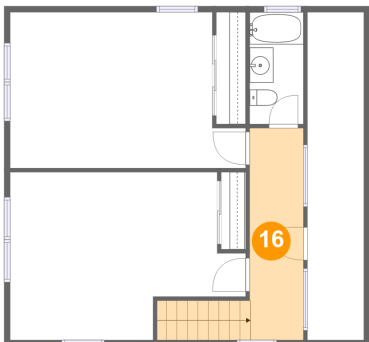
15 Floor 4 - Bedroom



Max Dimensions: 19'10" x 14'1"
Calculated Area: 235 sq. ft
Included: Yes

Heated: Yes
Finished: Yes
Enclosed: Yes
Contiguous: Yes
Permitted: Yes
Wet space: No
Addition: No
Conversion: No

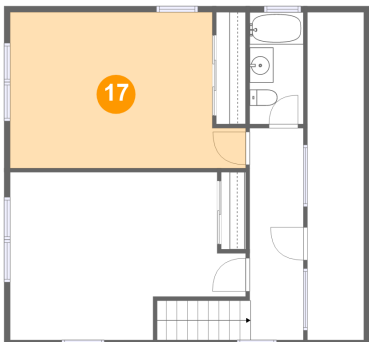
16 Floor 4 - Hall



Max Dimensions: 4'6" x 17'10"
Calculated Area: 106 sq. ft
Included: Yes

Heated: Yes
Finished: Yes
Enclosed: Yes
Contiguous: Yes
Permitted: Yes
Wet space: No
Addition: No
Conversion: No

17 Floor 4 - Bedroom

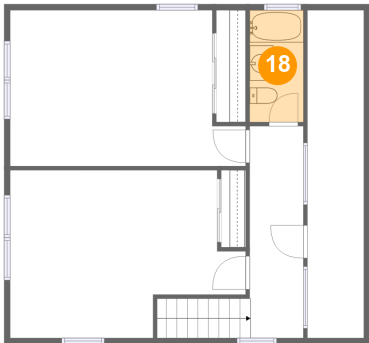


Max Dimensions: 19'10" x 13'1"
Calculated Area: 233 sq. ft
Included: Yes

Heated: Yes
Finished: Yes
Enclosed: Yes
Contiguous: Yes
Permitted: Yes
Wet space: No
Addition: No
Conversion: No

7246 North Meade Avenue, Wildwood, Chicago, Cook County,
Illinois, United States, 60646

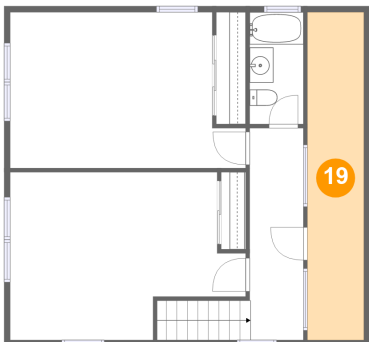
18 Floor 4 - Bath



Max Dimensions: 4'6" x 9'5"
Calculated Area: 43 sq. ft
Included: Yes

Heated: Yes
Finished: Yes
Enclosed: Yes
Contiguous: Yes
Permitted: Yes
Wet space: Yes
Addition: No
Conversion: No

19 Floor 4 - Attic



Max Dimensions: 4'9" x 27'7"
Calculated Area: 131 sq. ft
Included: No

Heated: No
Finished: No
Enclosed: Yes
Contiguous: Yes
Permitted: Yes
Wet space: No
Addition: No
Conversion: No