



## Measurement Report

Measurement Date	August 6, 2025
Client Name	Stephen Lau - RE/MAX Excellence
Property Address	319- 9730 174 St NW, Edmonton, AB
Property Type	Condo
Exterior Wall Thickness	N/A
Measurement Equipment	Laser

## Floor Area Totals

	Level	Metric (m <sup>2</sup> )	Imperial (ft <sup>2</sup> )
Main Floor	1	90.74	976.73
<b>Total Above Ground RMS Area</b>		<b>90.74</b>	<b>976.73</b>

## Room Dimensions

	Level	Metric (m)	Imperial (ft)
Living Room	1	4.21 x 3.83	13'10" x 12'7"
Dining Room	1	3.39 x 1.97	11'1" x 6'6"
Kitchen	1	3.39 x 2.89	11'1" x 9'6"
Laundry Room	1	2.73 x 1.64	8'11" x 5'5"
Primary Bedroom	1	3.02 x 6.33	9'11" x 20'9"
Bedroom 2	1	2.89 x 4.49	9'6" x 14'9"

## Bathroom Count

	Level	Pieces
Bathroom 1	1	3
Bathroom 2	1	4

### Measuring Process

Measurements have been completed and verified using the RMS guidelines. Measurements were obtained using lasers for the interior areas.

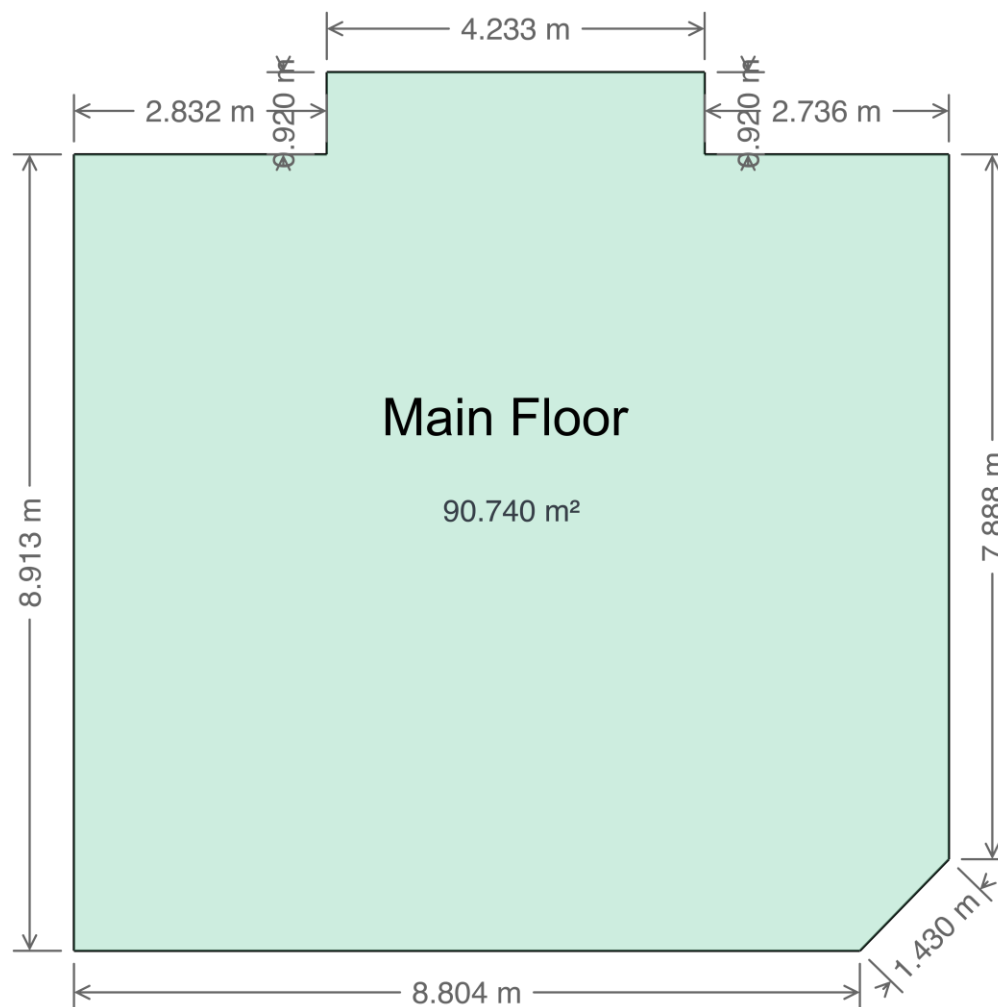
Room dimensions are largest length and width; parts of room may be smaller. Room area is not always equal to product of length and width.

587-566-6774

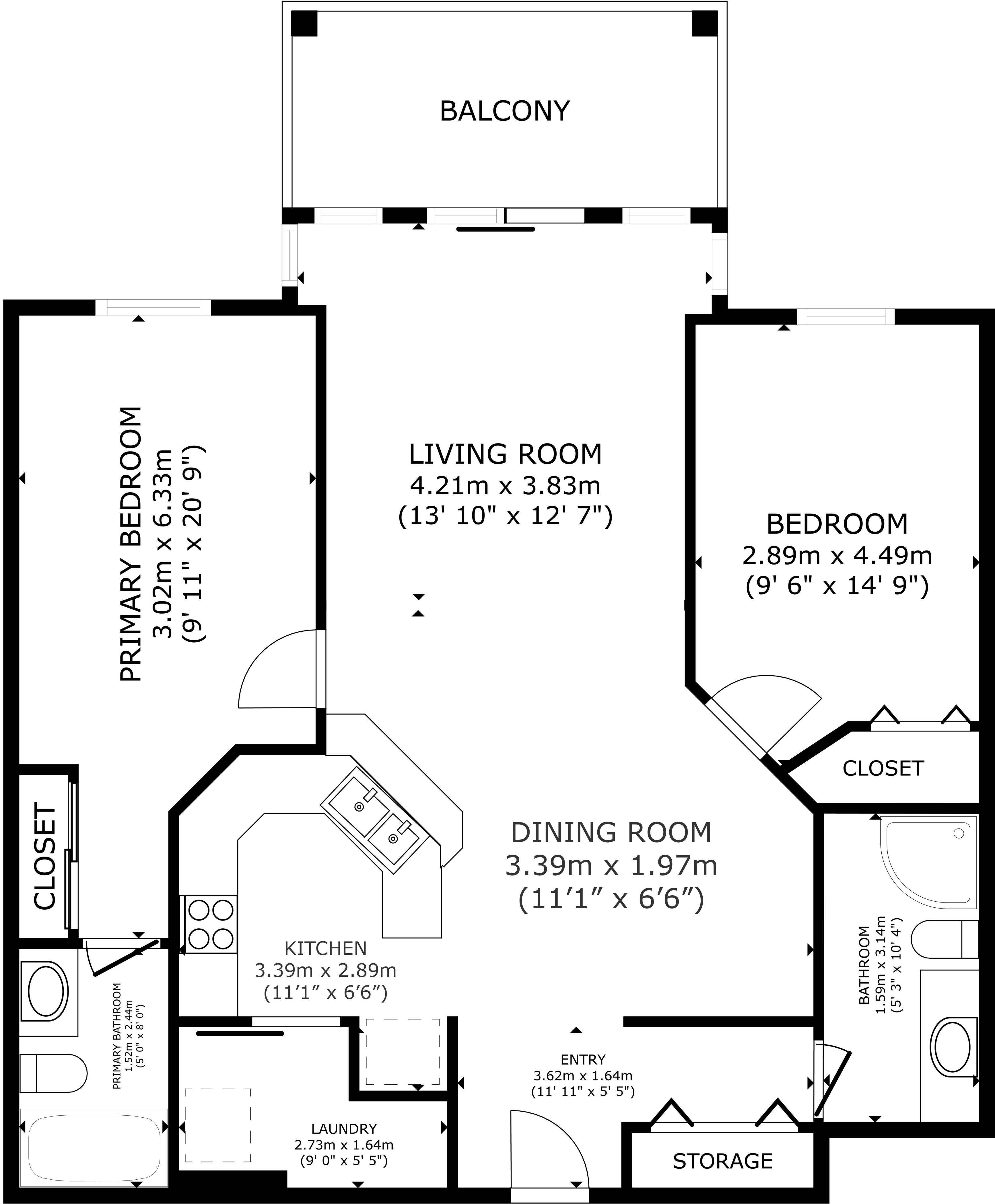
info@jcvisuals.ca

www.jcvisuals.ca

## Schematics



319- 9730 174 ST NW  
EDMONTON, AB



MAIN FLOOR  
90.74 m<sup>2</sup>(976 sq ft)

The floorplans and measurements are approximate within +/- 2% and are used for advertising usage only  
May include unfinished area. Not suitable for architectural or construction use.