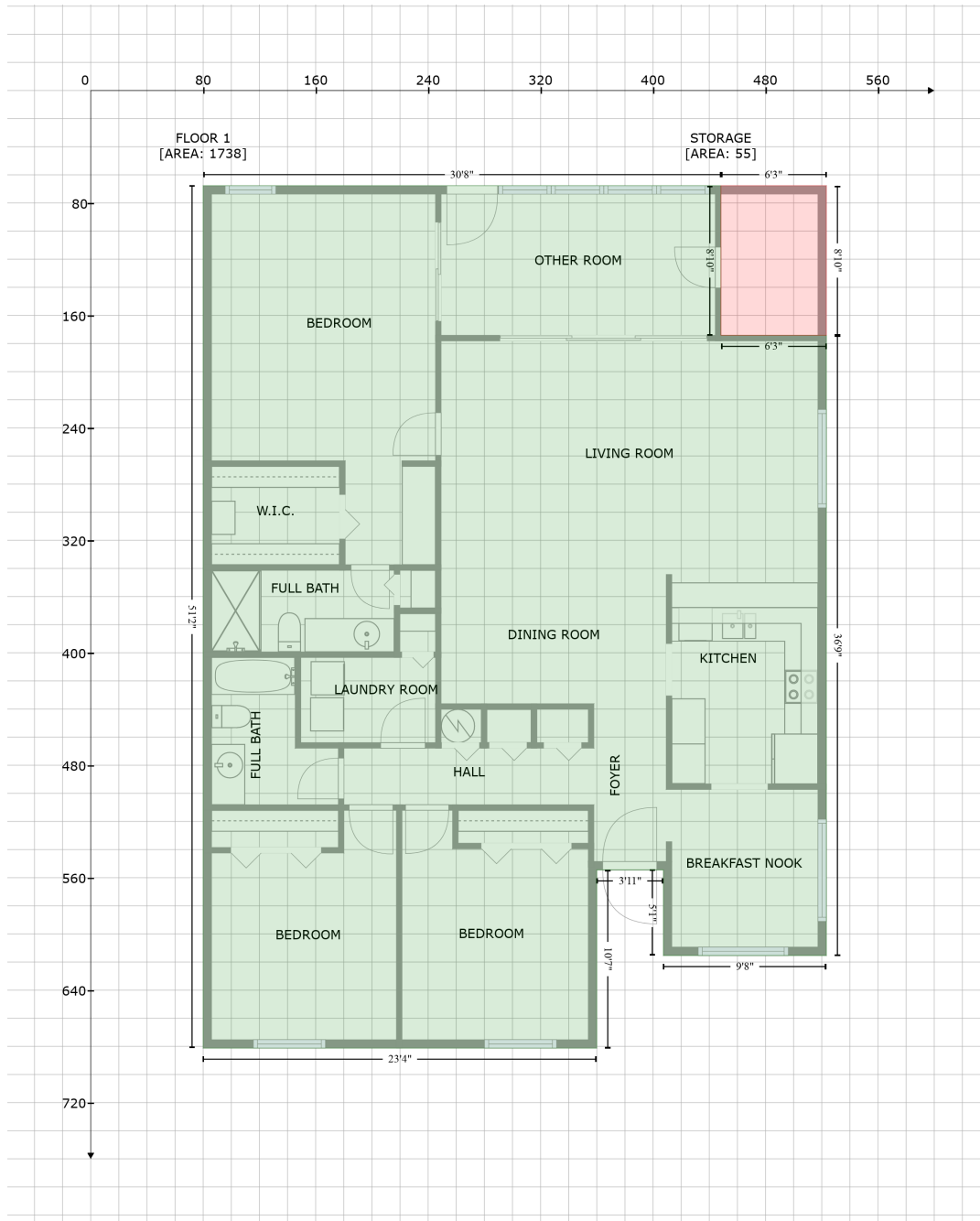


# 1801 E Lake Rd, East Lake, Palm Harbor, Pinellas County, Florida, United States, 34685, 21F

Gross Living Area: 1738 sq. ft



Space	Area (sq. ft)	Calculation <small>Coordinate Polygon Area Algorithm using inches</small>
FLOOR 1 (Living area)	1738	$-\left((448.3 + 448.3) * (67.7 - 174.1) + (448.3 + 523.3) * (174.1 - 174.1) + (523.3 + 523.3) * (174.1 - 615.4) + (523.3 + 407.3) * (615.4 - 615.4) + (407.3 + 407.3) * (615.4 - 554.4) + (407.3 + 359.9) * (554.4 - 554.4) + (359.9 + 359.9) * (554.4 - 681.2) + (359.9 + 80) * (681.2 - 681.2) + (80 + 80) * (681.2 - 67.7) + (80 + 448.3) * (67.7 - 67.7)\right) * 0.5 * 0.00694$
STORAGE (Non-living area)	55	$-\left((523.3 + 523.3) * (67.7 - 174.1) + (523.3 + 448.3) * (174.1 - 174.1) + (448.3 + 448.3) * (174.1 - 67.7) + (448.3 + 523.3) * (67.7 - 67.7)\right) * 0.5 * 0.00694$