

Home report

195 Golfer's Crossing Drive, Penhook, Franklin County, Virginia,
United States, 24137



Total GLA: 2425 sq. ft
Floor 1: 1754 sq. ft, Floor 2: 671 sq. ft
Excluded: Garage 508 sq. ft, Covered deck 434 sq. ft, Porch 193 sq. ft, Open to below 161 sq. ft

Property summary

 **2** Floors

 **3** Bedrooms

 **2** Bathrooms

Home report

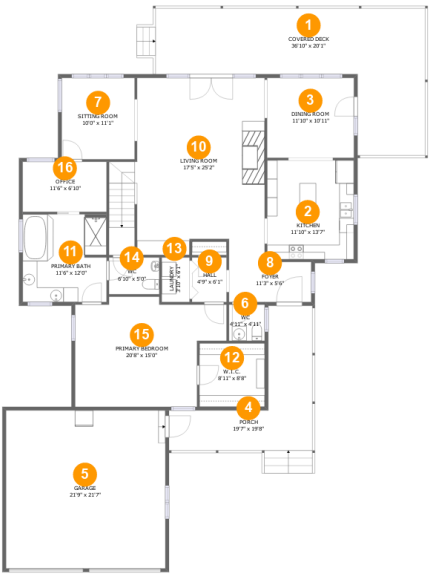
195 Golfer's Crossing Drive, Penhook, Franklin County, Virginia,
United States, 24137

 **1**
Half baths

 **1**
Garages

Home report

195 Golfer's Crossing Drive, Penhook, Franklin County, Virginia,
United States, 24137



Room dimensions

Floor 1 Total:1754sqft Excluded: 1135sqft

#		Max Dimensions	sqft	Included
1	Covered Deck	36'10" x 20'1"	434 sq. ft	No
2	Kitchen	11'10" x 13'7"	161 sq. ft	Yes
3	Dining Room	11'10" x 10'11"	130 sq. ft	Yes
4	Porch	19'7" x 19'8"	193 sq. ft	No
5	Garage	21'9" x 21'7"	470 sq. ft	No
6	WC	4'11" x 4'11"	24 sq. ft	Yes
7	Sitting Room	10'0" x 11'1"	111 sq. ft	Yes
8	Foyer	11'3" x 5'6"	62 sq. ft	Yes
9	Hall	4'9" x 6'1"	29 sq. ft	Yes
10	Living Room	17'5" x 25'2"	462 sq. ft	Yes
11	Primary Bath	11'6" x 12'0"	137 sq. ft	Yes

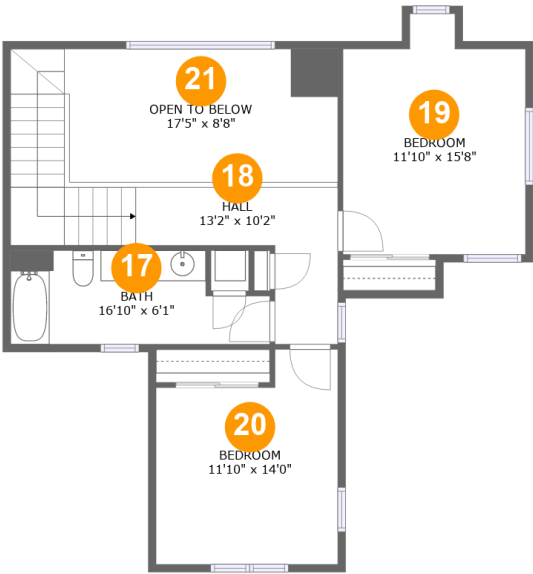
Home report

**195 Golfer's Crossing Drive, Penhook, Franklin County, Virginia,
United States, 24137**

#		Max Dimensions	sqft	Included
12	W.I.C.	8'11" x 8'8"	77 sq. ft	Yes
13	Laundry	3'10" x 6'1"	23 sq. ft	Yes
14	WC	6'10" x 5'0"	35 sq. ft	Yes
15	Primary Bedroom	20'8" x 15'0"	260 sq. ft	Yes
16	Office	11'6" x 6'10"	79 sq. ft	Yes

Home report

195 Golfer's Crossing Drive, Penhook, Franklin County, Virginia,
United States, 24137



Room dimensions

Floor 2 Total:671sqft Excluded: 161sqft

#		Max Dimensions	sqft	Included
17	Bath	16'10" x 6'1"	90 sq. ft	Yes
18	Hall	13'2" x 10'2"	147 sq. ft	Yes
19	Bedroom	11'10" x 15'8"	165 sq. ft	Yes
20	Bedroom	11'10" x 14'0"	146 sq. ft	Yes
21	Open To Below	17'5" x 8'8"	152 sq. ft	No

1 Floor 1 - Covered Deck



Max Dimensions: 36'10" x 20'1"
Calculated Area: 434 sq. ft
Included: No

Heated: No
Finished: Yes
Enclosed: No
Contiguous: Yes
Permitted: Yes
Wet space: No
Addition: No
Conversion: No

2 Floor 1 - Kitchen



Max Dimensions: 11'10" x 13'7"
Calculated Area: 161 sq. ft
Included: Yes

Heated: Yes
Finished: Yes
Enclosed: Yes
Contiguous: Yes
Permitted: Yes
Wet space: No
Addition: No
Conversion: No

3 Floor 1 - Dining Room



Max Dimensions: 11'10" x 10'11"
Calculated Area: 130 sq. ft
Included: Yes

Heated: Yes
Finished: Yes
Enclosed: Yes
Contiguous: Yes
Permitted: Yes
Wet space: No
Addition: No
Conversion: No

4 Floor 1 - Porch



Max Dimensions: 19'7" x 19'8"
Calculated Area: 193 sq. ft
Included: No

Heated: No
Finished: Yes
Enclosed: No
Contiguous: Yes
Permitted: Yes
Wet space: No
Addition: No
Conversion: No

5 Floor 1 - Garage



Max Dimensions: 21'9" x 21'7"
Calculated Area: 470 sq. ft
Included: No

Heated: No
Finished: No
Enclosed: Yes
Contiguous: Yes
Permitted: Yes
Wet space: No
Addition: No
Conversion: No

6 Floor 1 - WC



Max Dimensions: 4'11" x 4'11"
Calculated Area: 24 sq. ft
Included: Yes

Heated: Yes
Finished: Yes
Enclosed: Yes
Contiguous: Yes
Permitted: Yes
Wet space: Yes
Addition: No
Conversion: No

7 Floor 1 - Sitting Room



Max Dimensions: 10'0" x 11'1"
Calculated Area: 111 sq. ft
Included: Yes

Heated: Yes
Finished: Yes
Enclosed: Yes
Contiguous: Yes
Permitted: Yes
Wet space: No
Addition: No
Conversion: No

8 Floor 1 - Foyer



Max Dimensions: 11'3" x 5'6"
Calculated Area: 62 sq. ft
Included: Yes

Heated: Yes
Finished: Yes
Enclosed: Yes
Contiguous: Yes
Permitted: Yes
Wet space: No
Addition: No
Conversion: No

195 Golfer's Crossing Drive, Penhook, Franklin County, Virginia,
United States, 24137

9 Floor 1 - Hall



Max Dimensions: 4'9" x 6'1"
Calculated Area: 29 sq. ft
Included: Yes

Heated: Yes
Finished: Yes
Enclosed: Yes
Contiguous: Yes
Permitted: Yes
Wet space: No
Addition: No
Conversion: No

10 Floor 1 - Living Room



Max Dimensions: 17'5" x
25'2"
Calculated Area: 462 sq. ft
Included: Yes

Heated: Yes
Finished: Yes
Enclosed: Yes
Contiguous:
Yes
Permitted: Yes
Wet space: No
Addition: No
Conversion: No

11 Floor 1 - Primary Bath



Max Dimensions: 11'6" x
12'0"
Calculated Area: 137 sq. ft
Included: Yes

Heated: Yes
Finished: Yes
Enclosed: Yes
Contiguous:
Yes
Permitted: Yes
Wet space: Yes
Addition: No
Conversion: No

195 Golfer's Crossing Drive, Penhook, Franklin County, Virginia,
United States, 24137

12 Floor 1 - W.I.C.



Max Dimensions: 8'11" x 8'8"
Calculated Area: 77 sq. ft
Included: Yes

Heated: Yes
Finished: Yes
Enclosed: Yes
Contiguous: Yes
Permitted: Yes
Wet space: No
Addition: No
Conversion: No

13 Floor 1 - Laundry



Max Dimensions: 3'10" x 6'1"
Calculated Area: 23 sq. ft
Included: Yes

Heated: Yes
Finished: Yes
Enclosed: Yes
Contiguous: Yes
Permitted: Yes
Wet space: No
Addition: No
Conversion: No

14 Floor 1 - WC



Max Dimensions: 6'10" x 5'0"
Calculated Area: 35 sq. ft
Included: Yes

Heated: Yes
Finished: Yes
Enclosed: Yes
Contiguous: Yes
Permitted: Yes
Wet space: Yes
Addition: No
Conversion: No

195 Golfer's Crossing Drive, Penhook, Franklin County, Virginia,
United States, 24137

15 Floor 1 - Primary Bedroom



Max Dimensions: 20'8" x 15'0"
Calculated Area: 260 sq. ft
Included: Yes

Heated: Yes
Finished: Yes
Enclosed: Yes
Contiguous: Yes
Permitted: Yes
Wet space: No
Addition: No
Conversion: No

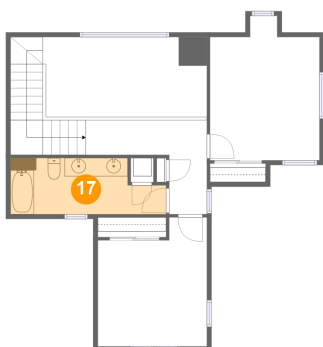
16 Floor 1 - Office



Max Dimensions: 11'6" x 6'10"
Calculated Area: 79 sq. ft
Included: Yes

Heated: Yes
Finished: Yes
Enclosed: Yes
Contiguous: Yes
Permitted: Yes
Wet space: No
Addition: No
Conversion: No

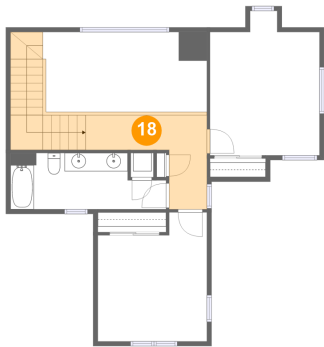
17 Floor 2 - Bath



Max Dimensions: 16'10" x 6'1"
Calculated Area: 90 sq. ft
Included: Yes

Heated: Yes
Finished: Yes
Enclosed: Yes
Contiguous: Yes
Permitted: Yes
Wet space: Yes
Addition: No
Conversion: No

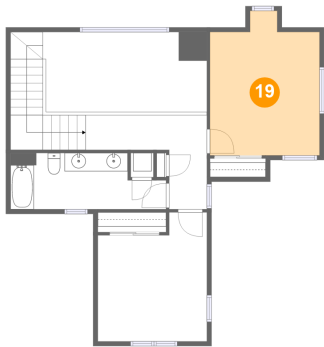
18 Floor 2 - Hall



Max Dimensions: 13'2" x 10'2"
Calculated Area: 147 sq. ft
Included: Yes

Heated: Yes
Finished: Yes
Enclosed: Yes
Contiguous: Yes
Permitted: Yes
Wet space: No
Addition: No
Conversion: No

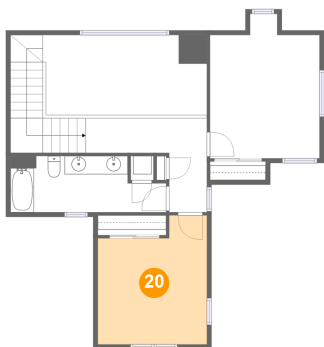
19 Floor 2 - Bedroom



Max Dimensions: 11'10" x 15'8"
Calculated Area: 165 sq. ft
Included: Yes

Heated: Yes
Finished: Yes
Enclosed: Yes
Contiguous: Yes
Permitted: Yes
Wet space: No
Addition: No
Conversion: No

20 Floor 2 - Bedroom

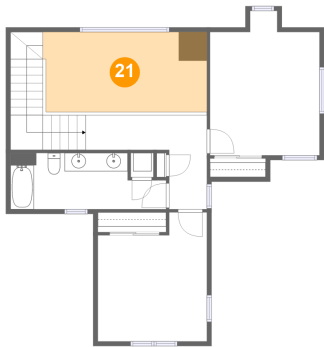


Max Dimensions: 11'10" x 14'0"
Calculated Area: 146 sq. ft
Included: Yes

Heated: Yes
Finished: Yes
Enclosed: Yes
Contiguous: Yes
Permitted: Yes
Wet space: No
Addition: No
Conversion: No

195 Golfer's Crossing Drive, Penhook, Franklin County, Virginia,
United States, 24137

21 Floor 2 - Open To Below



Max Dimensions: 17'5" x 8'8"
Calculated Area: 152 sq. ft
Included: No

Heated: No
Finished: No
Enclosed: No
Contiguous: Yes
Permitted: No
Wet space: No
Addition: No
Conversion: No