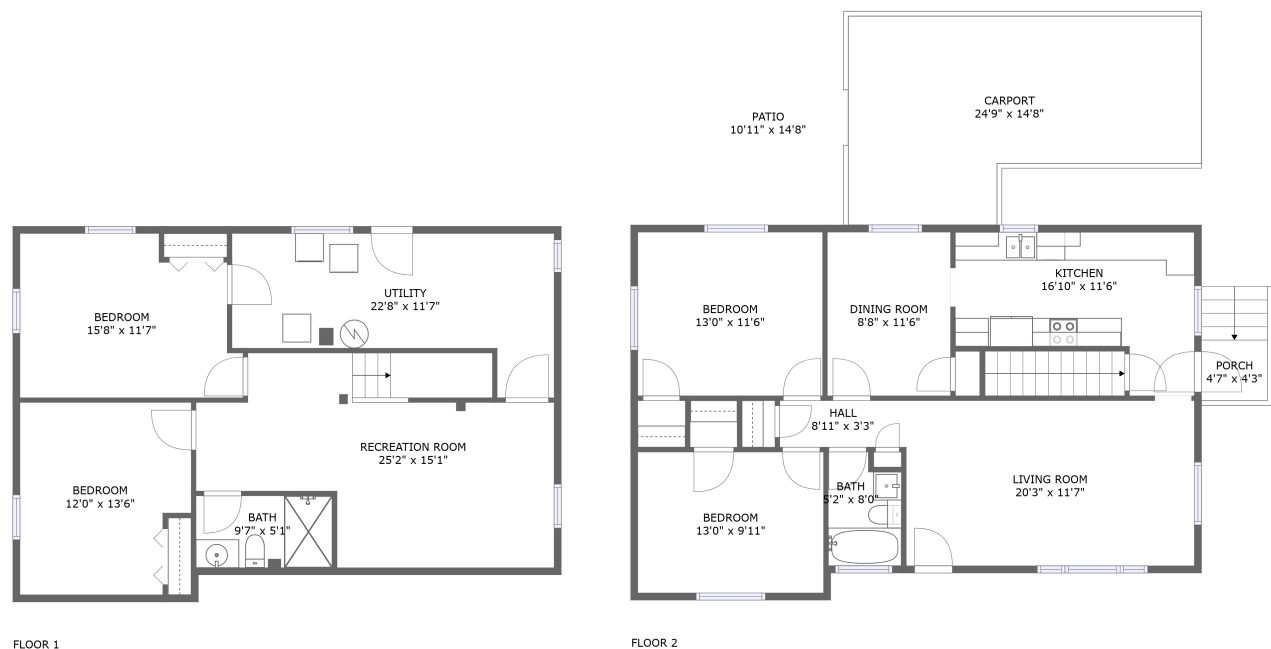


Home report

139 Christian Avenue Northeast, Roanoke, Virginia 24012, United States



Total Area: 1763 sq. ft

Below Ground: 755 sq. ft, Floor 2: 1008 sq. ft

Excluded: Utility 214 sq. ft, Outdoor Porch 37 sq. ft, Outdoor Patio 158 sq. ft, Carport 302 sq. ft

Property summary

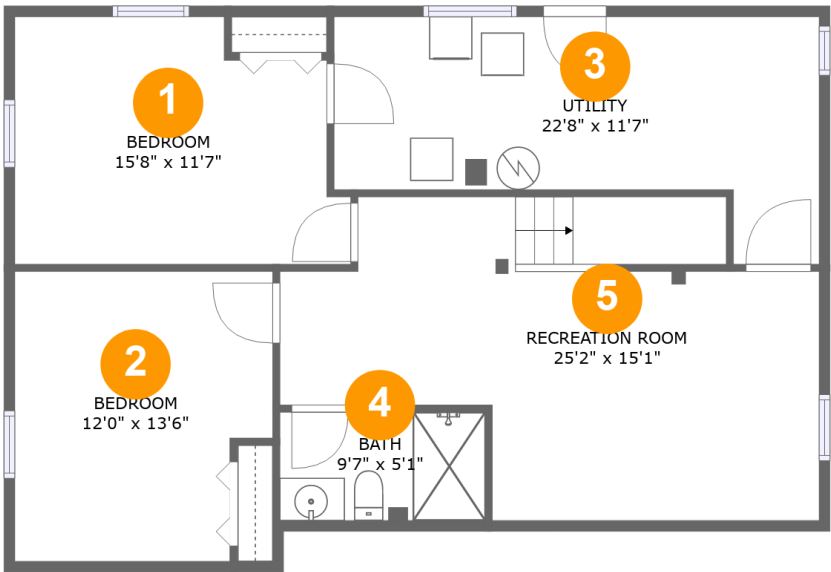
2 Floors

4 Bedrooms

2 Bathrooms

Home report

139 Christian Avenue Northeast, Roanoke, Virginia 24012,
United States



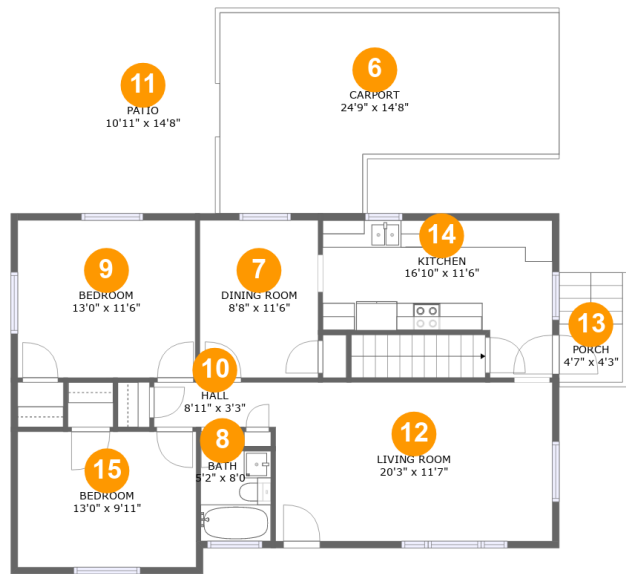
Room dimensions

Floor 1 Below ground Total:755sqft Excluded: 214sqft

#		Max Dimensions	sqft	Included
1	Bedroom	15'8" x 11'7"	162 sq. ft	Yes
2	Bedroom	12'0" x 13'6"	151 sq. ft	Yes
3	Utility	22'8" x 11'7"	196 sq. ft	No
4	Bath	9'7" x 5'1"	48 sq. ft	Yes
5	Recreation Room	25'2" x 15'1"	297 sq. ft	Yes

Home report

139 Christian Avenue Northeast, Roanoke, Virginia 24012,
United States



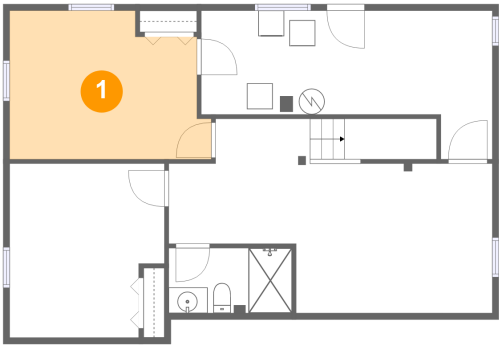
Room dimensions

Floor 2 Total:1008sqft Excluded: 497sqft

#		Max Dimensions	sqft	Included
6	Carport	24'9" x 14'8"	302 sq. ft	No
7	Dining Room	8'8" x 11'6"	100 sq. ft	Yes
8	Bath	5'2" x 8'0"	38 sq. ft	Yes
9	Bedroom	13'0" x 11'6"	149 sq. ft	Yes
10	Hall	8'11" x 3'3"	29 sq. ft	Yes
11	Patio	10'11" x 14'8"	158 sq. ft	No
12	Living Room	20'3" x 11'7"	235 sq. ft	Yes
13	Porch	4'7" x 4'3"	37 sq. ft	No
14	Kitchen	16'10" x 11'6"	151 sq. ft	Yes
15	Bedroom	13'0" x 9'11"	129 sq. ft	Yes

139 Christian Avenue Northeast, Roanoke, Virginia 24012,
United States

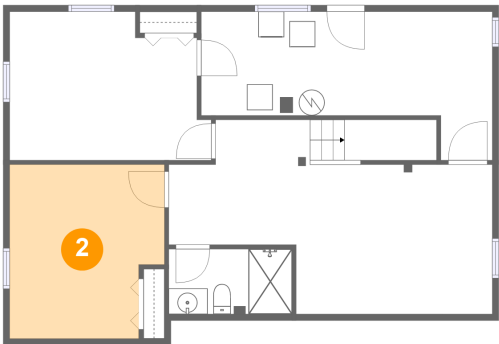
1 Floor 1 - Bedroom



Max Dimensions: 15'8" x 11'7"
Calculated Area: 162 sq. ft
Included: Yes

Heated: Yes
Finished: Yes
Enclosed: Yes
Contiguous: Yes
Permitted: Yes
Wet space: No
Addition: No
Conversion: No

2 Floor 1 - Bedroom

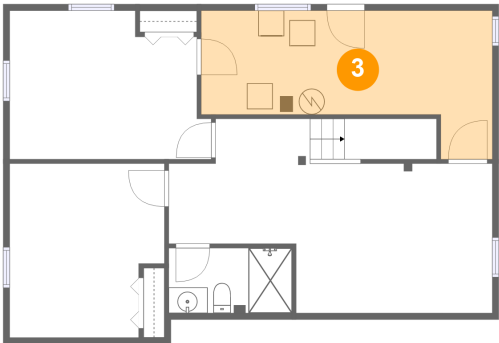


Max Dimensions: 12'0" x 13'6"
Calculated Area: 151 sq. ft
Included: Yes

Heated: Yes
Finished: Yes
Enclosed: Yes
Contiguous: Yes
Permitted: Yes
Wet space: No
Addition: No
Conversion: No

139 Christian Avenue Northeast, Roanoke, Virginia 24012,
United States

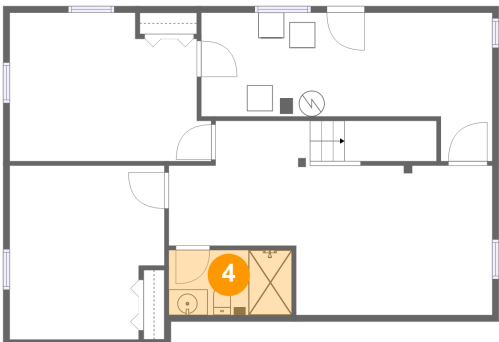
3 Floor 1 - Utility



Max Dimensions: 22'8" x 11'7"
Calculated Area: 196 sq. ft
Included: No

Heated: Yes
Finished: No
Enclosed: Yes
Contiguous: Yes
Permitted: Yes
Wet space: No
Addition: No
Conversion: No

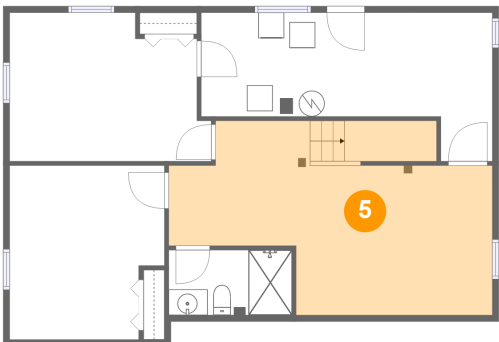
4 Floor 1 - Bath



Max Dimensions: 9'7" x 5'1"
Calculated Area: 48 sq. ft
Included: Yes

Heated: Yes
Finished: Yes
Enclosed: Yes
Contiguous: Yes
Permitted: Yes
Wet space: Yes
Addition: No
Conversion: No

5 Floor 1 - Recreation Room



Max Dimensions: 25'2" x 15'1"
Calculated Area: 297 sq. ft
Included: Yes

Heated: Yes
Finished: Yes
Enclosed: Yes
Contiguous: Yes
Permitted: Yes
Wet space: No
Addition: No
Conversion: No

139 Christian Avenue Northeast, Roanoke, Virginia 24012,
United States

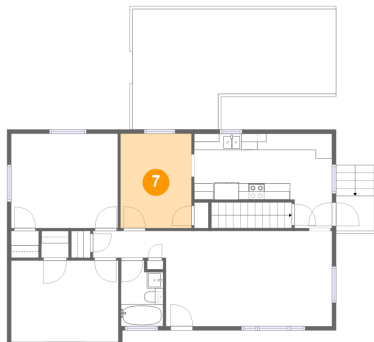
6 Floor 2 - Carport



Max Dimensions: 24'9" x 14'8"
Calculated Area: 302 sq. ft
Included: No

Heated: No
Finished: Yes
Enclosed: No
Contiguous: Yes
Permitted: Yes
Wet space: No
Addition: No
Conversion: No

7 Floor 2 - Dining Room



Max Dimensions: 8'8" x 11'6"
Calculated Area: 100 sq. ft
Included: Yes

Heated: Yes
Finished: Yes
Enclosed: Yes
Contiguous: Yes
Permitted: Yes
Wet space: No
Addition: No
Conversion: No

8 Floor 2 - Bath



Max Dimensions: 5'2" x 8'0"
Calculated Area: 38 sq. ft
Included: Yes

Heated: Yes
Finished: Yes
Enclosed: Yes
Contiguous: Yes
Permitted: Yes
Wet space: Yes
Addition: No
Conversion: No

139 Christian Avenue Northeast, Roanoke, Virginia 24012,
United States

9 Floor 2 - Bedroom



Max Dimensions: 13'0" x 11'6"
Calculated Area: 149 sq. ft
Included: Yes

Heated: Yes
Finished: Yes
Enclosed: Yes
Contiguous: Yes
Permitted: Yes
Wet space: No
Addition: No
Conversion: No

10 Floor 2 - Hall



Max Dimensions: 8'11" x 3'3"
Calculated Area: 29 sq. ft
Included: Yes

Heated: Yes
Finished: Yes
Enclosed: Yes
Contiguous: Yes
Permitted: Yes
Wet space: No
Addition: No
Conversion: No

11 Floor 2 - Patio



Max Dimensions: 10'11" x 14'8"
Calculated Area: 158 sq. ft
Included: No

Heated: No
Finished: Yes
Enclosed: No
Contiguous: Yes
Permitted: Yes
Wet space: No
Addition: No
Conversion: No

139 Christian Avenue Northeast, Roanoke, Virginia 24012,
United States

12 Floor 2 - Living Room



Max Dimensions: 20'3" x 11'7"
Calculated Area: 235 sq. ft
Included: Yes

Heated: Yes
Finished: Yes
Enclosed: Yes
Contiguous: Yes
Permitted: Yes
Wet space: No
Addition: No
Conversion: No

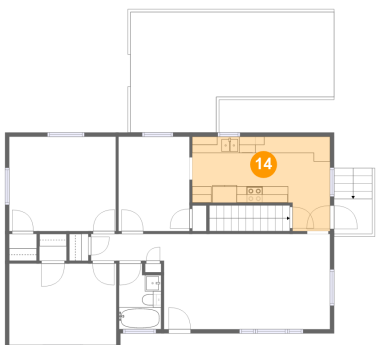
13 Floor 2 - Porch



Max Dimensions: 4'7" x 4'3"
Calculated Area: 37 sq. ft
Included: No

Heated: No
Finished: Yes
Enclosed: No
Contiguous: Yes
Permitted: Yes
Wet space: No
Addition: No
Conversion: No

14 Floor 2 - Kitchen



Max Dimensions: 16'10" x 11'6"
Calculated Area: 151 sq. ft
Included: Yes

Heated: Yes
Finished: Yes
Enclosed: Yes
Contiguous: Yes
Permitted: Yes
Wet space: No
Addition: No
Conversion: No

139 Christian Avenue Northeast, Roanoke, Virginia 24012,
United States

15 Floor 2 - Bedroom



Max Dimensions: 13'0" x 9'11"
Calculated Area: 129 sq. ft
Included: Yes

Heated: Yes
Finished: Yes
Enclosed: Yes
Contiguous: Yes
Permitted: Yes
Wet space: No
Addition: No
Conversion: No