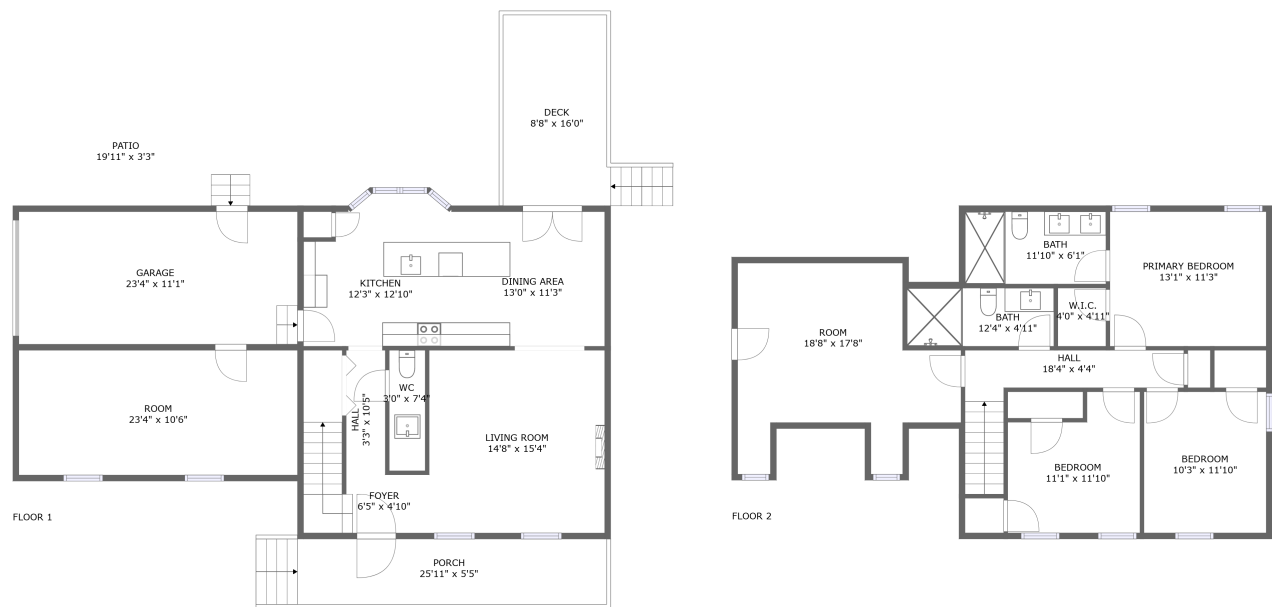
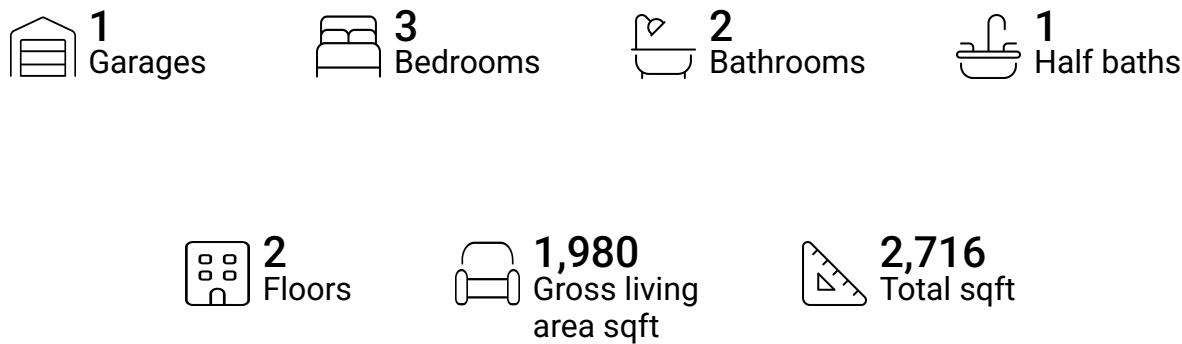


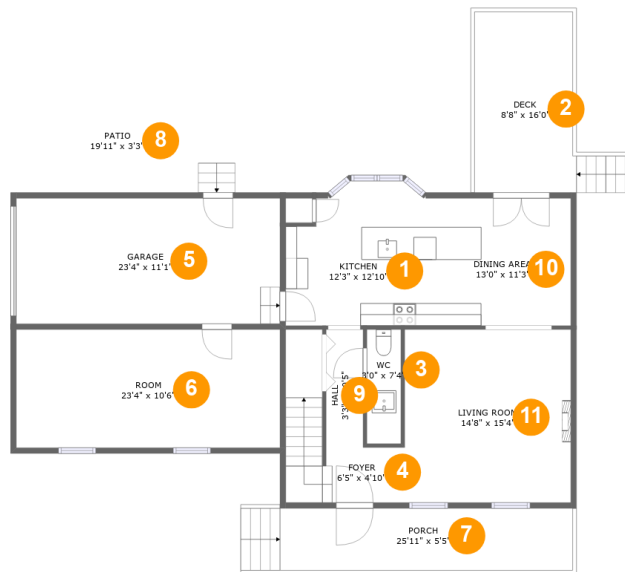
190 County Road 3933, Arley, Winston County,
Alabama, United States, 35541



Property summary



190 County Road 3933, Arley, Winston County, Alabama, United States, 35541



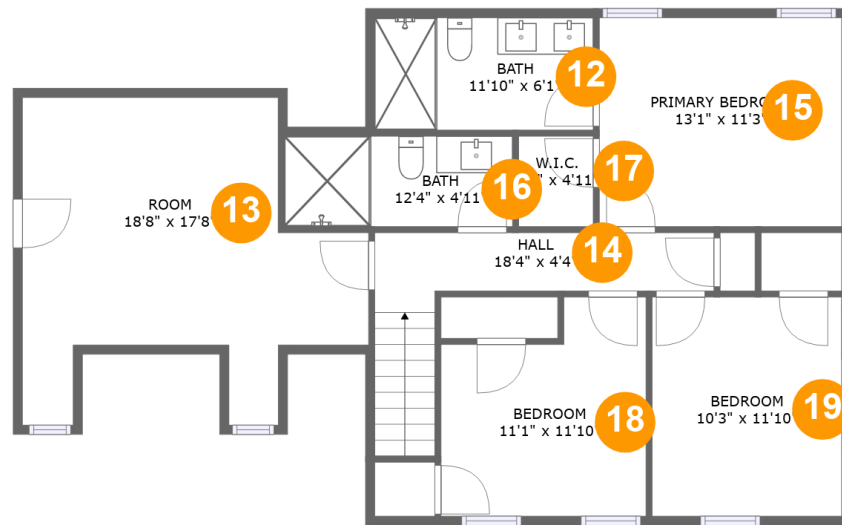
Room dimensions

Floor 1

Total sqft: 1685 Living area: 1017

#		Dimensions	sqft	Counted as living area
1	Kitchen	12'3" x 12'10"	141 sq. ft	Yes
2	Deck	8'8" x 16'0"	157 sq. ft	No
3	WC	3'0" x 7'4"	30 sq. ft	Yes
4	Foyer	6'5" x 4'10"	65 sq. ft	Yes
5	Garage	23'4" x 11'1"	260 sq. ft	No
6	Room	23'4" x 10'6"	244 sq. ft	Yes
7	Porch	25'11" x 5'5"	161 sq. ft	No
8	Patio	19'11" x 3'3"	73 sq. ft	No
9	Hall	3'3" x 10'5"	34 sq. ft	Yes
10	Dining Area	13'0" x 11'3"	147 sq. ft	Yes
11	Living Room	14'8" x 15'4"	225 sq. ft	Yes

**190 County Road 3933, Arley, Winston County,
Alabama, United States, 35541**



Room dimensions

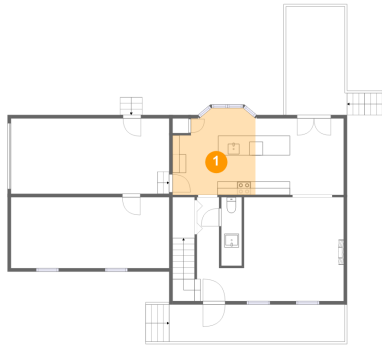
Floor 2

Total sqft: 1031 Living area: 963

#		Dimensions	sqft	Counted as living area
12	Bath	11'10" x 6'1"	72 sq. ft	Yes
13	Room	18'8" x 17'8"	186 sq. ft	Yes
14	Hall	18'4" x 4'4"	87 sq. ft	Yes
15	Primary Bedroom	13'1" x 11'3"	148 sq. ft	Yes
16	Bath	12'4" x 4'11"	60 sq. ft	Yes
17	W.I.C.	4'0" x 4'11"	20 sq. ft	Yes
18	Bedroom	11'1" x 11'10"	114 sq. ft	Yes
19	Bedroom	10'3" x 11'10"	121 sq. ft	Yes

**190 County Road 3933, Arley, Winston County,
Alabama, United States, 35541**

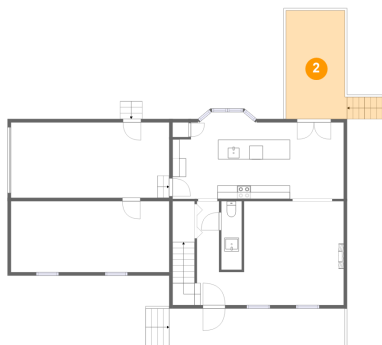
1 Floor 1 - Kitchen



Dimensions: 12'3" x 12'10"
Area: 141 sq. ft
Counted as living area: Yes

Heated: Yes
Finished: Yes
Enclosed: Yes
Contiguous: Yes
Permitted: Yes
Wet space: No
Addition: No
Conversion: No

2 Floor 1 - Deck

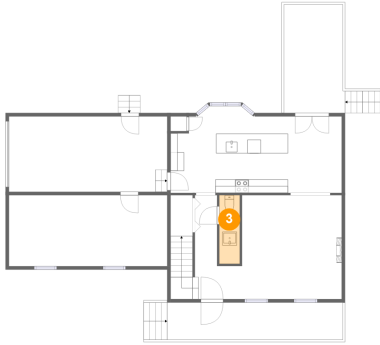


Dimensions: 8'8" x 16'0"
Area: 157 sq. ft
Counted as living area: No

Heated: No
Finished: Yes
Enclosed: No
Contiguous: Yes
Permitted: Yes
Wet space: No
Addition: No
Conversion: No

190 County Road 3933, Arley, Winston County,
Alabama, United States, 35541

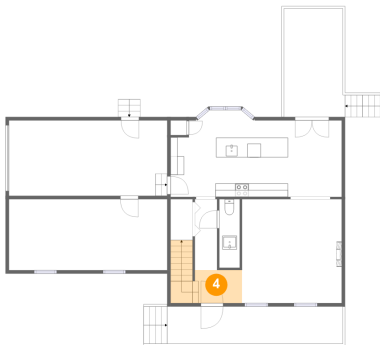
3 Floor 1 - WC



Dimensions: 3'0" x 7'4"
Area: 30 sq. ft
Counted as living area: Yes

Heated: Yes
Finished: Yes
Enclosed: Yes
Contiguous: Yes
Permitted: Yes
Wet space: No
Addition: No
Conversion: No

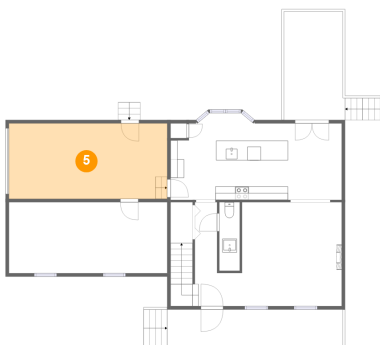
4 Floor 1 - Foyer



Dimensions: 6'5" x 4'10"
Area: 65 sq. ft
Counted as living area: Yes

Heated: Yes
Finished: Yes
Enclosed: Yes
Contiguous: Yes
Permitted: Yes
Wet space: No
Addition: No
Conversion: No

5 Floor 1 - Garage

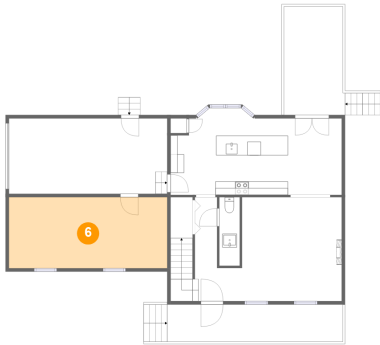


Dimensions: 23'4" x 11'1"
Area: 260 sq. ft
Counted as living area: No

Heated: No
Finished: No
Enclosed: Yes
Contiguous: Yes
Permitted: Yes
Wet space: No
Addition: No
Conversion: No

**190 County Road 3933, Arley, Winston County,
Alabama, United States, 35541**

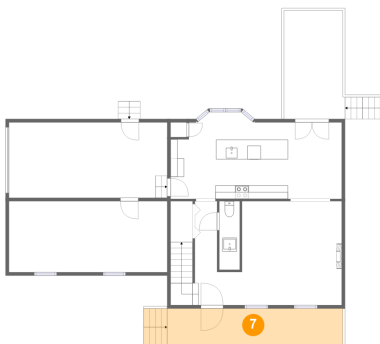
6 Floor 1 - Room



Dimensions: 23'4" x 10'6"
Area: 244 sq. ft
Counted as living area: Yes

Heated: Yes
Finished: Yes
Enclosed: Yes
Contiguous: Yes
Permitted: Yes
Wet space: No
Addition: No
Conversion: No

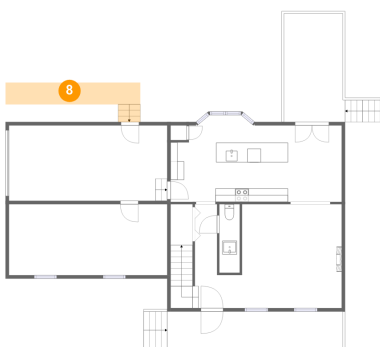
7 Floor 1 - Porch



Dimensions: 25'11" x 5'5"
Area: 161 sq. ft
Counted as living area: No

Heated: No
Finished: Yes
Enclosed: No
Contiguous: Yes
Permitted: Yes
Wet space: No
Addition: No
Conversion: No

8 Floor 1 - Patio

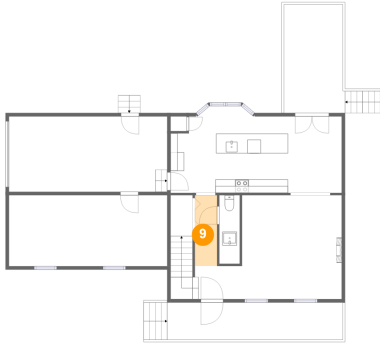


Dimensions: 19'11" x 3'3"
Area: 73 sq. ft
Counted as living area: No

Heated: No
Finished: Yes
Enclosed: No
Contiguous: Yes
Permitted: Yes
Wet space: No
Addition: No
Conversion: No

190 County Road 3933, Arley, Winston County,
Alabama, United States, 35541

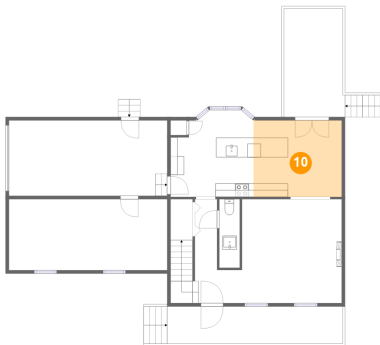
9 Floor 1 - Hall



Dimensions: 3'3" x 10'5"
Area: 34 sq. ft
Counted as living area: Yes

Heated: Yes
Finished: Yes
Enclosed: Yes
Contiguous: Yes
Permitted: Yes
Wet space: No
Addition: No
Conversion: No

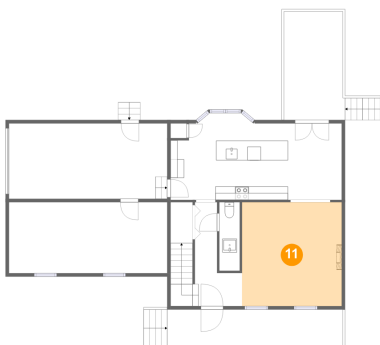
10 Floor 1 - Dining Area



Dimensions: 13'0" x 11'3"
Area: 147 sq. ft
Counted as living area: Yes

Heated: Yes
Finished: Yes
Enclosed: Yes
Contiguous: Yes
Permitted: Yes
Wet space: No
Addition: No
Conversion: No

11 Floor 1 - Living Room

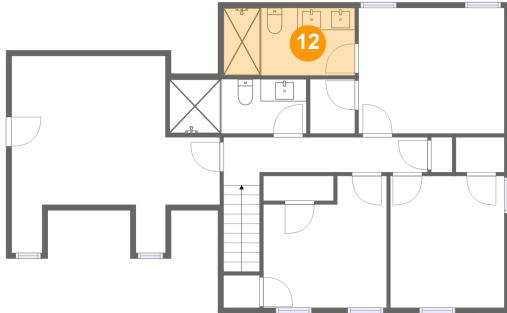


Dimensions: 14'8" x 15'4"
Area: 225 sq. ft
Counted as living area: Yes

Heated: Yes
Finished: Yes
Enclosed: Yes
Contiguous: Yes
Permitted: Yes
Wet space: No
Addition: No
Conversion: No

190 County Road 3933, Arley, Winston County,
Alabama, United States, 35541

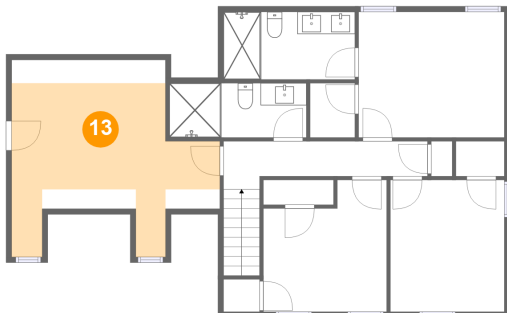
12 Floor 2 - Bath



Dimensions: 11'10" x 6'1"
Area: 72 sq. ft
Counted as living area: Yes

Heated: Yes
Finished: Yes
Enclosed: Yes
Contiguous: Yes
Permitted: Yes
Wet space: Yes
Addition: No
Conversion: No

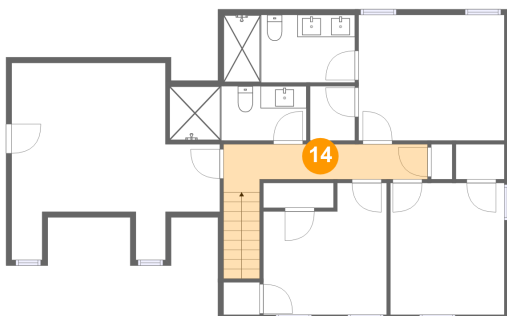
13 Floor 2 - Room



Dimensions: 18'8" x 17'8"
Area: 186 sq. ft
Counted as living area: Yes

Heated: Yes
Finished: Yes
Enclosed: Yes
Contiguous: Yes
Permitted: Yes
Wet space: No
Addition: No
Conversion: No

14 Floor 2 - Hall

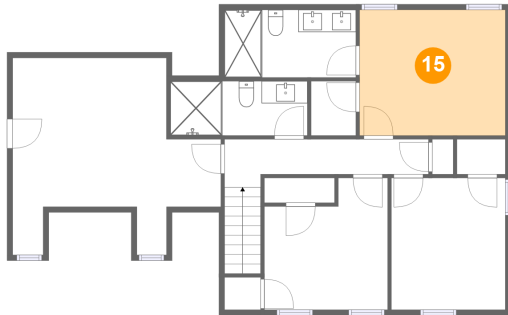


Dimensions: 18'4" x 4'4"
Area: 87 sq. ft
Counted as living area: Yes

Heated: Yes
Finished: Yes
Enclosed: Yes
Contiguous: Yes
Permitted: Yes
Wet space: No
Addition: No
Conversion: No

190 County Road 3933, Arley, Winston County,
Alabama, United States, 35541

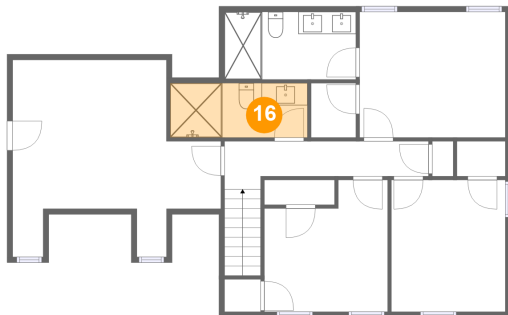
15 Floor 2 - Primary Bedroom



Dimensions: 13'1" x 11'3"
Area: 148 sq. ft
Counted as living area: Yes

Heated: Yes
Finished: Yes
Enclosed: Yes
Contiguous: Yes
Permitted: Yes
Wet space: No
Addition: No
Conversion: No

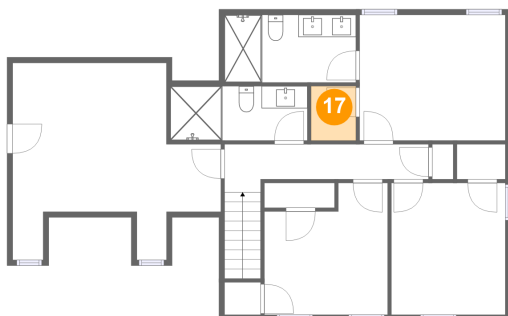
16 Floor 2 - Bath



Dimensions: 12'4" x 4'11"
Area: 60 sq. ft
Counted as living area: Yes

Heated: Yes
Finished: Yes
Enclosed: Yes
Contiguous: Yes
Permitted: Yes
Wet space: Yes
Addition: No
Conversion: No

17 Floor 2 - W.I.C.

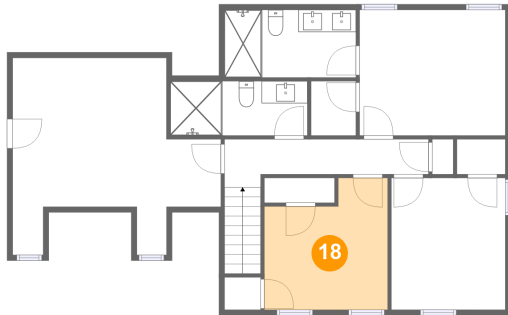


Dimensions: 4'0" x 4'11"
Area: 20 sq. ft
Counted as living area: Yes

Heated: Yes
Finished: Yes
Enclosed: Yes
Contiguous: Yes
Permitted: Yes
Wet space: No
Addition: No
Conversion: No

**190 County Road 3933, Arley, Winston County,
Alabama, United States, 35541**

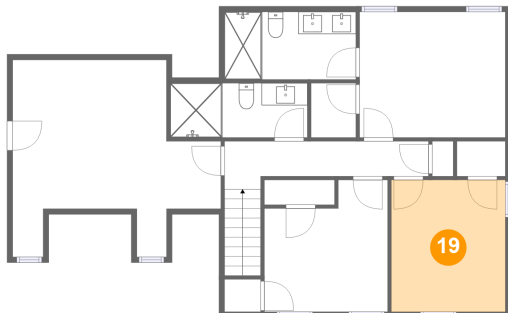
18 Floor 2 - Bedroom



Dimensions: 11'1" x 11'10"
Area: 114 sq. ft
Counted as living area: Yes

Heated: Yes
Finished: Yes
Enclosed: Yes
Contiguous: Yes
Permitted: Yes
Wet space: No
Addition: No
Conversion: No

19 Floor 2 - Bedroom



Dimensions: 10'3" x 11'10"
Area: 121 sq. ft
Counted as living area: Yes

Heated: Yes
Finished: Yes
Enclosed: Yes
Contiguous: Yes
Permitted: Yes
Wet space: No
Addition: No
Conversion: No