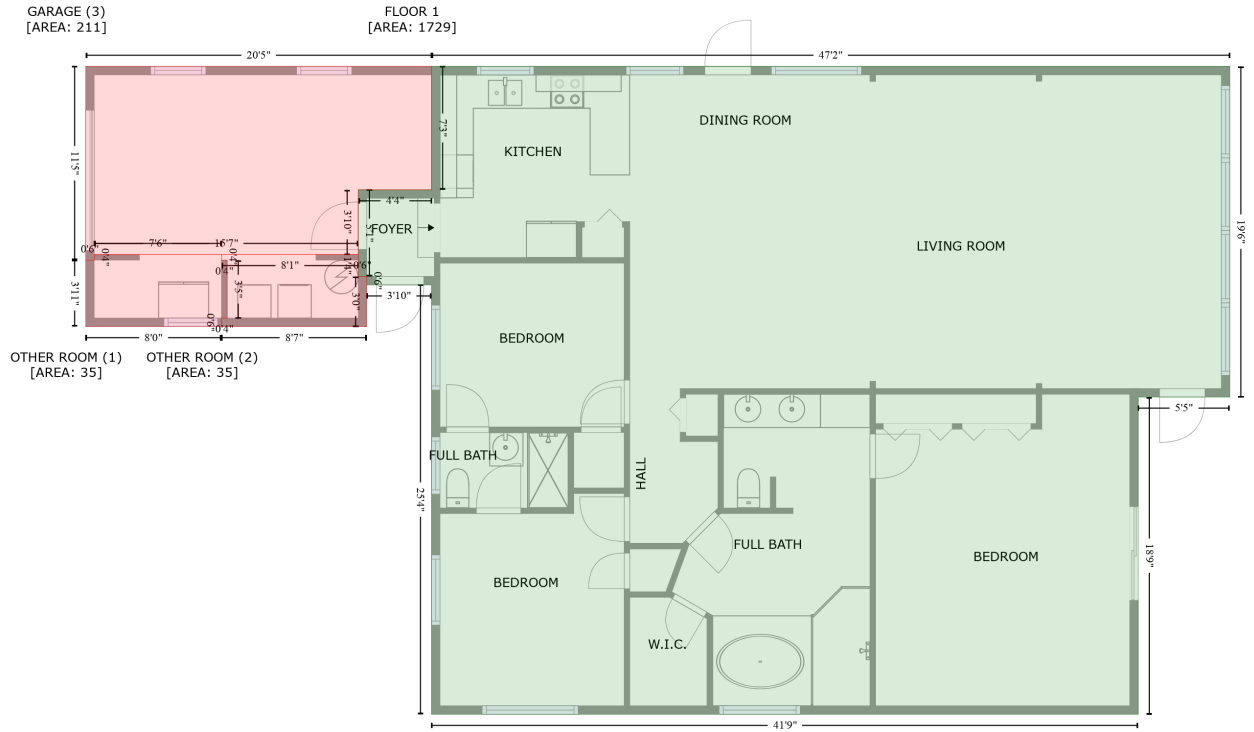


17043 Dolphin Drive, North Redington Beach, Pinellas County, Florida, United States, 33708

Gross Living Area: 1729 sq. ft



Space	Area (sq. ft)	Calculation <small>Coordinate Polygon Area Algorithm using inches</small>
FLOOR 1 (Living area)	1729	$-\left((804 + 804) * (4.6 - 239) + (804 + 739.1) * (239 - 239) + (739.1 + 739.1) * (239 - 463.9) + (739.1 + 237.7) * (463.9 - 463.9) + (237.7 + 237.7) * (463.9 - 159.5) + (237.7 + 191.7) * (159.5 - 159.5) + (191.7 + 191.7) * (159.5 - 153.5) + (191.7 + 185.7) * (153.5 - 153.5) + (185.7 + 185.7) * (153.5 - 92.1) + (185.7 + 237.7) * (92.1 - 92.1) + (237.7 + 237.7) * (92.1 - 4.6) + (237.7 + 804) * (4.6 - 4.6)\right) * 0.5 * 0.00694$
OTHER ROOM (Non-living area)	35	$-\left((88.7 + 88.7) * (138 - 142) + (88.7 + 92.7) * (142 - 142) + (92.7 + 92.7) * (142 - 183.1) + (92.7 + 88.7) * (183.1 - 183.1) + (88.7 + 88.7) * (183.1 - 189.1) + (88.7 + -7.6) * (189.1 - 189.1) + (-7.6 + -7.6) * (189.1 - 142) + (-7.6 + -1.6) * (142 - 142) + (-1.6 + -1.6) * (142 - 138) + (-1.6 + 88.7) * (138 - 138)\right) * 0.5 * 0.00694$
OTHER ROOM (Non-living area)	35	$-\left((185.7 + 185.7) * (138 - 153.5) + (185.7 + 191.7) * (153.5 - 153.5) + (191.7 + 191.7) * (153.5 - 189.1) + (191.7 + 88.7) * (189.1 - 189.1) + (88.7 + 88.7) * (189.1 - 183.1) + (88.7 + 92.7) * (183.1 - 183.1) + (92.7 + 92.7) * (183.1 - 142) + (92.7 + 88.7) * (142 - 142) + (88.7 + 88.7) * (142 - 138) + (88.7 + 185.7) * (138 - 138)\right) * 0.5 * 0.00694$
GARAGE (Non-living area)	211	$-\left((237.7 + 237.7) * (4.6 - 92.1) + (237.7 + 185.7) * (92.1 - 92.1) + (185.7 + 185.7) * (92.1 - 138) + (185.7 + -1.6) * (138 - 138) + (-1.6 + -1.6) * (138 - 142) + (-1.6 + -7.6) * (142 - 142) + (-7.6 + -7.6) * (142 - 4.6) + (-7.6 + 237.7) * (4.6 - 4.6)\right) * 0.5 * 0.00694$