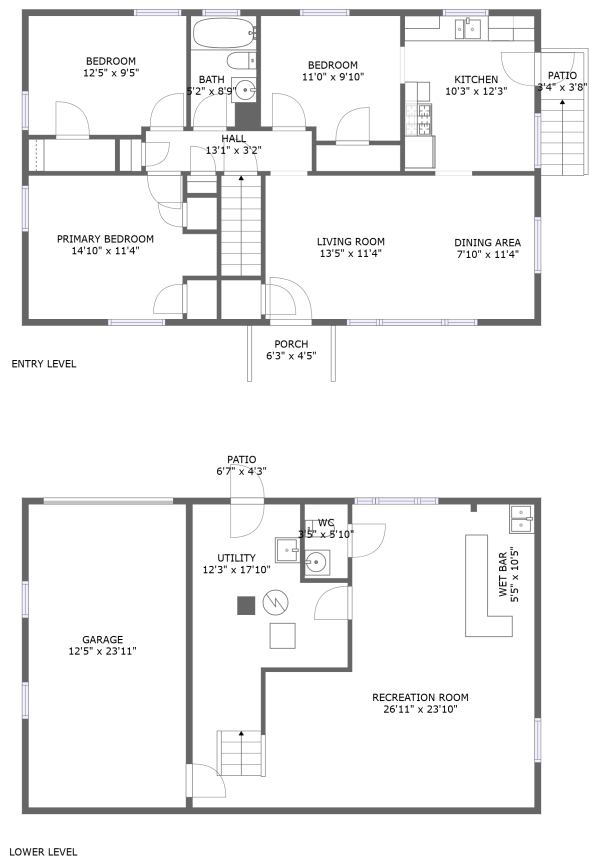


Home report

537 Dillard Road Southwest, South Roanoke, Roanoke, Roanoke city, Virginia, United States, 24014



Total Area: 1433 sq. ft

Below Ground: 482 sq. ft, Floor 2: 951 sq. ft

Excluded: Patio 61 sq. ft, Garage 296 sq. ft, Utility 161 sq. ft, Porch 27 sq. ft, Walls: 141 sq. ft

Property summary

 **2** Floors

 **3** Bedrooms

 **1** Bathrooms

Home report

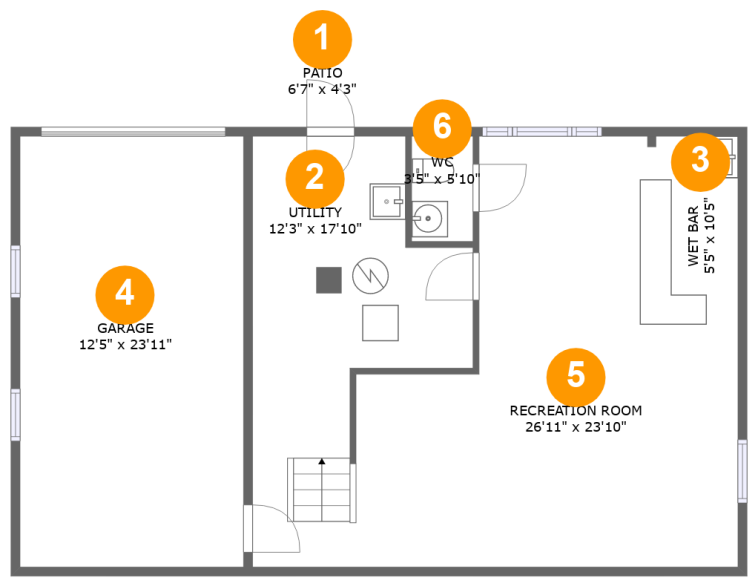
537 Dillard Road Southwest, South Roanoke, Roanoke, Roanoke city, Virginia, United States, 24014

 **1**  
Half baths

 **1**  
Garages

Home report

537 Dillard Road Southwest, South Roanoke, Roanoke, Roanoke city, Virginia, United States, 24014



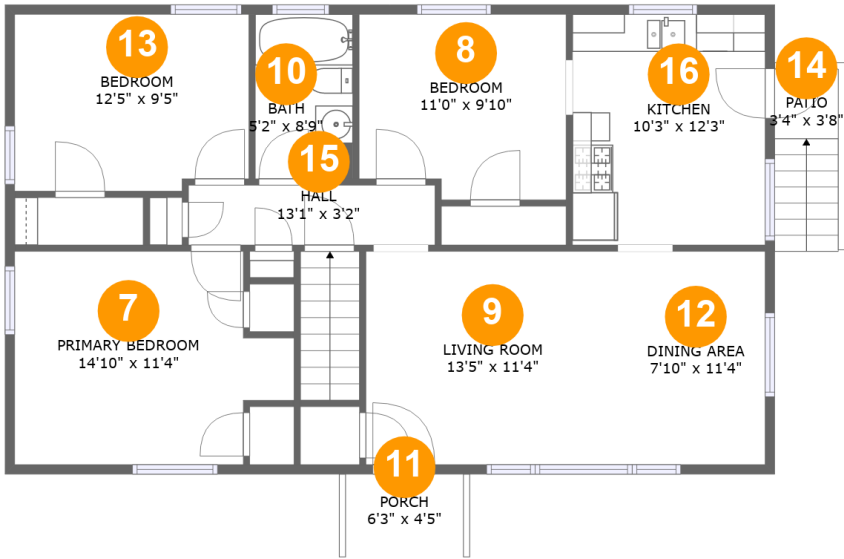
Room dimensions

Floor 1 Below ground Total:482sqft    Excluded: 485sqft

#		Max Dimensions	sqft	Included
1	Patio	6'7" x 4'3"	28 sq. ft	No
2	Utility	12'3" x 17'10"	161 sq. ft	No
3	Wet Bar	5'5" x 10'5"	57 sq. ft	Yes
4	Garage	12'5" x 23'11"	296 sq. ft	No
5	Recreation Room	26'11" x 23'10"	394 sq. ft	Yes
6	WC	3'5" x 5'10"	20 sq. ft	Yes

Home report

537 Dillard Road Southwest, South Roanoke, Roanoke, Roanoke city, Virginia, United States, 24014



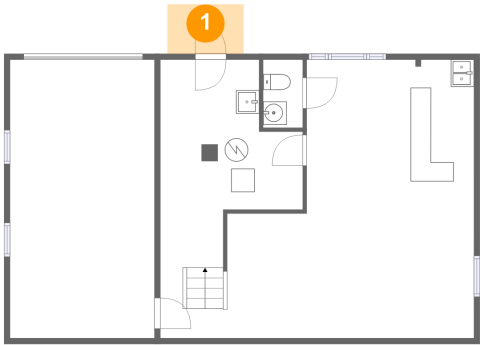
Room dimensions

Floor 2 Total:951sqft    Excluded: 60sqft

#		Max Dimensions	sqft	Included
7	Primary Bedroom	14'10" x 11'4"	146 sq. ft	Yes
8	Bedroom	11'0" x 9'10"	103 sq. ft	Yes
9	Living Room	13'5" x 11'4"	152 sq. ft	Yes
10	Bath	5'2" x 8'9"	45 sq. ft	Yes
11	Porch	6'3" x 4'5"	27 sq. ft	No
12	Dining Area	7'10" x 11'4"	88 sq. ft	Yes
13	Bedroom	12'5" x 9'5"	114 sq. ft	Yes
14	Patio	3'4" x 3'8"	33 sq. ft	No
15	Hall	13'1" x 3'2"	42 sq. ft	Yes
16	Kitchen	10'3" x 12'3"	125 sq. ft	Yes

537 Dillard Road Southwest, South Roanoke, Roanoke, Roanoke city, Virginia, United States, 24014

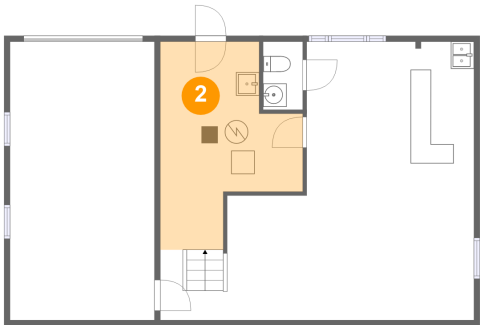
1 Floor 1 - Patio



Max Dimensions: 6'7" x 4'3"  
Calculated Area: 28 sq. ft  
Included: No

Heated: No  
Finished: Yes  
Enclosed: No  
Contiguous: Yes  
Permitted: Yes  
Wet space: No  
Addition: No  
Conversion: No

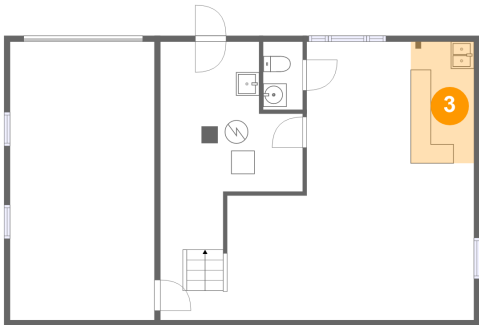
2 Floor 1 - Utility



Max Dimensions: 12'3" x 17'10"  
Calculated Area: 161 sq. ft  
Included: No

Heated: Yes  
Finished: No  
Enclosed: Yes  
Contiguous: Yes  
Permitted: Yes  
Wet space: No  
Addition: No  
Conversion: No

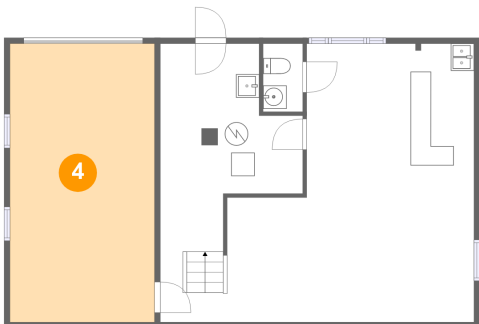
3 Floor 1 - Wet Bar



Max Dimensions: 5'5" x 10'5"  
Calculated Area: 57 sq. ft  
Included: Yes

Heated: Yes  
Finished: Yes  
Enclosed: Yes  
Contiguous: Yes  
Permitted: Yes  
Wet space: No  
Addition: No  
Conversion: No

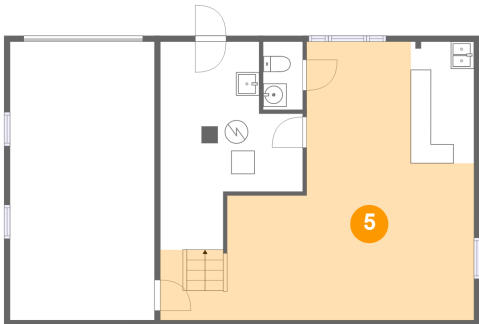
4 Floor 1 - Garage



Max Dimensions: 12'5" x 23'11"  
Calculated Area: 296 sq. ft  
Included: No

Heated: No  
Finished: No  
Enclosed: Yes  
Contiguous: Yes  
Permitted: Yes  
Wet space: No  
Addition: No  
Conversion: No

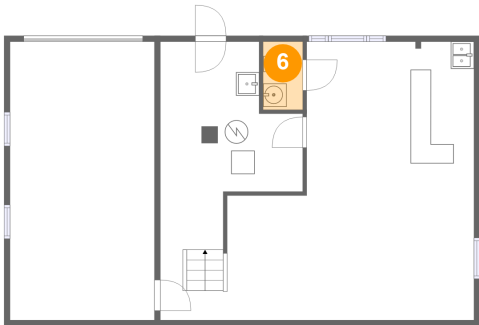
5 Floor 1 - Recreation Room



Max Dimensions: 26'11" x 23'10"  
Calculated Area: 394 sq. ft  
Included: Yes

Heated: Yes  
Finished: Yes  
Enclosed: Yes  
Contiguous: Yes  
Permitted: Yes  
Wet space: No  
Addition: No  
Conversion: No

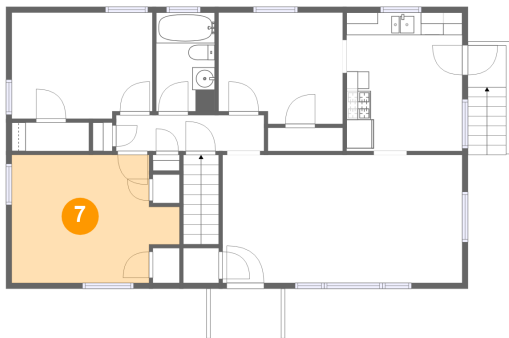
6 Floor 1 - WC



Max Dimensions: 3'5" x 5'10"  
Calculated Area: 20 sq. ft  
Included: Yes

Heated: Yes  
Finished: Yes  
Enclosed: Yes  
Contiguous: Yes  
Permitted: Yes  
Wet space: Yes  
Addition: No  
Conversion: No

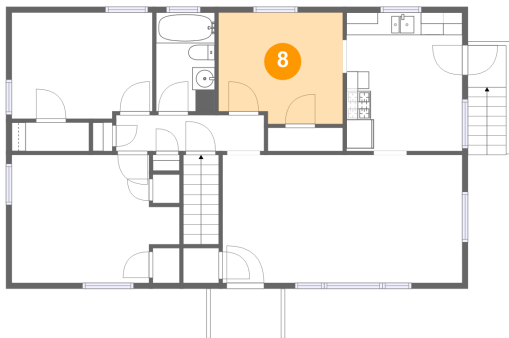
7 Floor 2 - Primary Bedroom



Max Dimensions: 14'10" x 11'4"  
Calculated Area: 146 sq. ft  
Included: Yes

Heated: Yes  
Finished: Yes  
Enclosed: Yes  
Contiguous: Yes  
Permitted: Yes  
Wet space: No  
Addition: No  
Conversion: No

8 Floor 2 - Bedroom

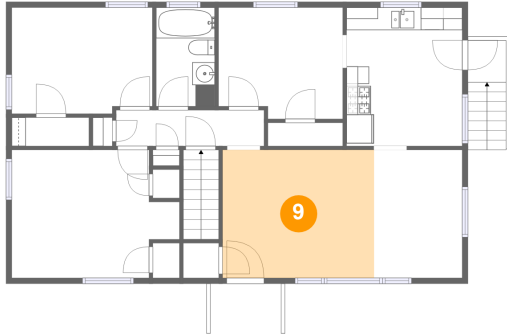


Max Dimensions: 11'0" x 9'10"  
Calculated Area: 103 sq. ft  
Included: Yes

Heated: Yes  
Finished: Yes  
Enclosed: Yes  
Contiguous: Yes  
Permitted: Yes  
Wet space: No  
Addition: No  
Conversion: No

537 Dillard Road Southwest, South Roanoke, Roanoke, Roanoke city, Virginia, United States, 24014

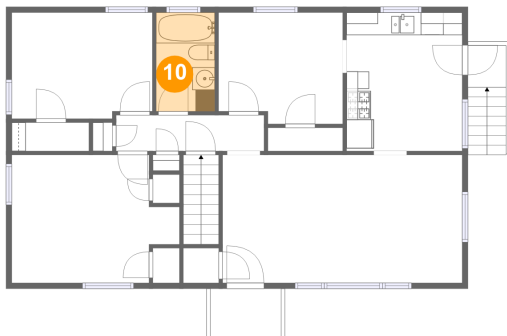
## 9 Floor 2 - Living Room



Max Dimensions: 13'5" x 11'4"  
Calculated Area: 152 sq. ft  
Included: Yes

Heated: Yes  
Finished: Yes  
Enclosed: Yes  
Contiguous: Yes  
Permitted: Yes  
Wet space: No  
Addition: No  
Conversion: No

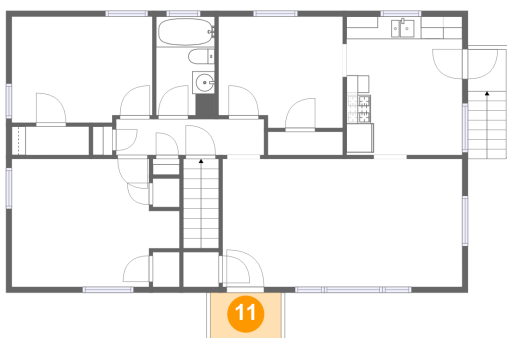
## 10 Floor 2 - Bath



Max Dimensions: 5'2" x 8'9"  
Calculated Area: 45 sq. ft  
Included: Yes

Heated: Yes  
Finished: Yes  
Enclosed: Yes  
Contiguous: Yes  
Permitted: Yes  
Wet space: Yes  
Addition: No  
Conversion: No

## 11 Floor 2 - Porch



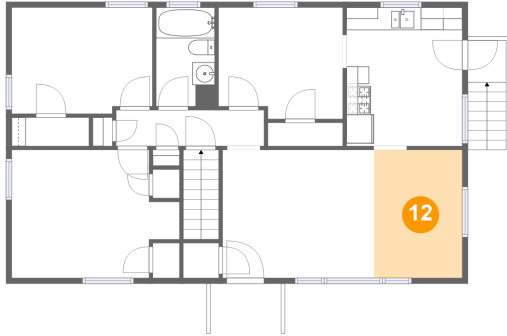
Max Dimensions: 6'3" x 4'5"  
Calculated Area: 27 sq. ft  
Included: No

Heated: No  
Finished: Yes  
Enclosed: No  
Contiguous: Yes  
Permitted: Yes  
Wet space: No  
Addition: No  
Conversion: No



537 Dillard Road Southwest, South Roanoke, Roanoke, Roanoke city, Virginia, United States, 24014

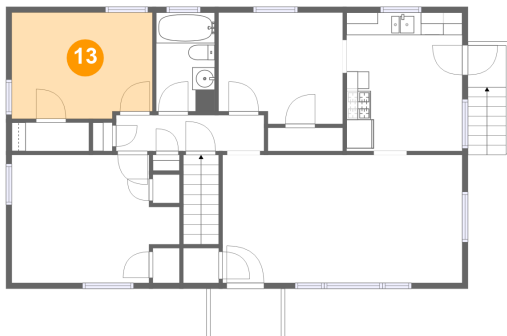
## 12 Floor 2 - Dining Area



Max Dimensions: 7'10" x 11'4"  
Calculated Area: 88 sq. ft  
Included: Yes

Heated: Yes  
Finished: Yes  
Enclosed: Yes  
Contiguous: Yes  
Permitted: Yes  
Wet space: No  
Addition: No  
Conversion: No

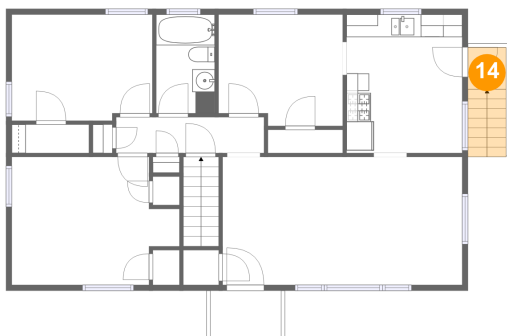
## 13 Floor 2 - Bedroom



Max Dimensions: 12'5" x 9'5"  
Calculated Area: 114 sq. ft  
Included: Yes

Heated: Yes  
Finished: Yes  
Enclosed: Yes  
Contiguous: Yes  
Permitted: Yes  
Wet space: No  
Addition: No  
Conversion: No

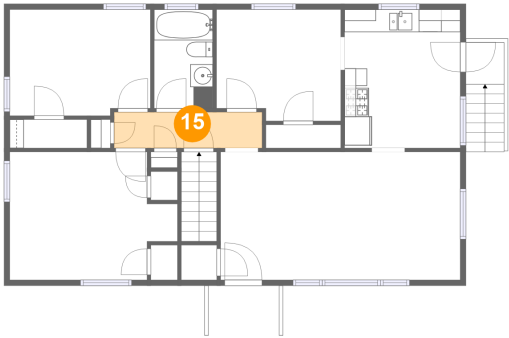
## 14 Floor 2 - Patio



Max Dimensions: 3'4" x 3'8"  
Calculated Area: 33 sq. ft  
Included: No

Heated: No  
Finished: Yes  
Enclosed: No  
Contiguous: Yes  
Permitted: Yes  
Wet space: No  
Addition: No  
Conversion: No

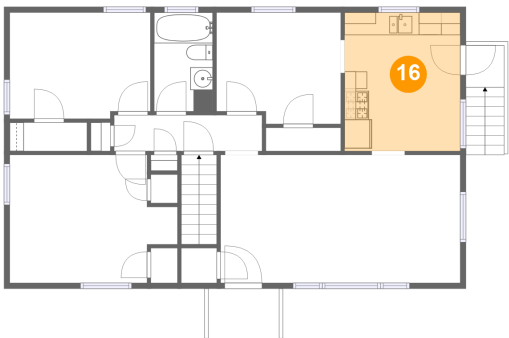
15 Floor 2 - Hall



Max Dimensions: 13'1" x 3'2"  
Calculated Area: 42 sq. ft  
Included: Yes

Heated: Yes  
Finished: Yes  
Enclosed: Yes  
Contiguous: Yes  
Permitted: Yes  
Wet space: No  
Addition: No  
Conversion: No

16 Floor 2 - Kitchen



Max Dimensions: 10'3" x 12'3"  
Calculated Area: 125 sq. ft  
Included: Yes

Heated: Yes  
Finished: Yes  
Enclosed: Yes  
Contiguous: Yes  
Permitted: Yes  
Wet space: No  
Addition: No  
Conversion: No