


2513 Fairway Drive Southwest, Raleigh Court, Roanoke, Roanoke, Virginia, United States, 24015



Property Summary

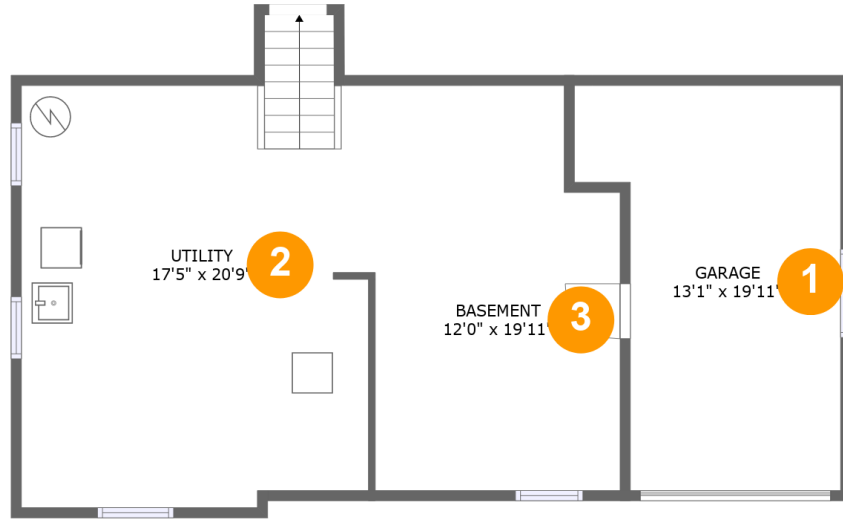
 **1** garages  **3** bedrooms  **1** bathrooms  **1** half baths

 **3** floors

 **1,411** Gross Living Area sqft

 **2,916** total sqft

**2513 Fairway Drive Southwest, Raleigh Court,
Roanoke, Roanoke, Virginia, United States, 24015**



Room Dimensions

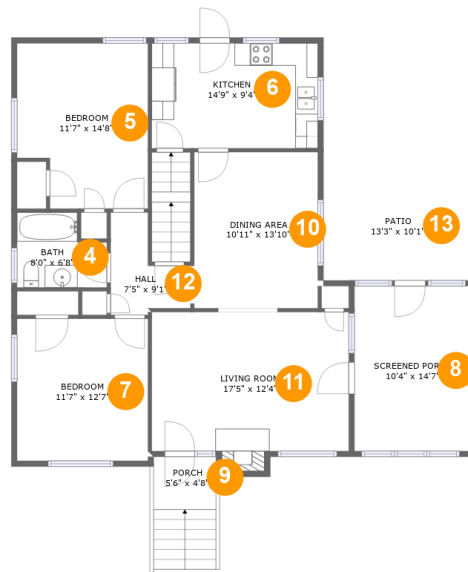
Floor 1

Total sqft: 888

Living area: 0

#	Room name	Dimensions	Area (sqft)	Counted as Living Area
1	Garage	13'1" x 19'11"	219 sq. ft	No
2	Utility	17'5" x 20'9"	363 sq. ft	No
3	Basement	12'0" x 19'11"	225 sq. ft	No

2513 Fairway Drive Southwest, Raleigh Court, Roanoke, Roanoke, Virginia, United States, 24015



Room Dimensions

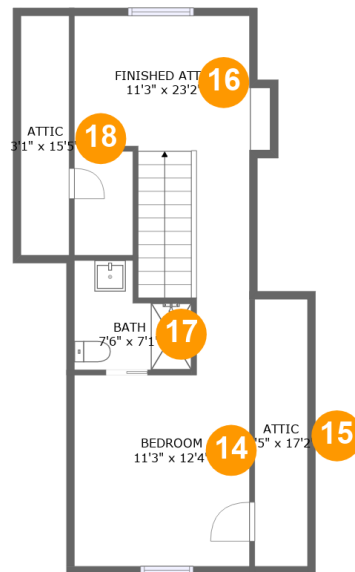
Floor 2

Total sqft: 1448

Living area: 1082

#	Room name	Dimensions	Area (sqft)	Counted as Living Area
4	Bath	8'0" x 6'8"	46 sq. ft	Yes
5	Bedroom	11'7" x 14'8"	157 sq. ft	Yes
6	Kitchen	14'9" x 9'4"	137 sq. ft	Yes
7	Bedroom	11'7" x 12'7"	146 sq. ft	Yes
8	Screened Porch	10'4" x 14'7"	151 sq. ft	No
9	Porch	5'6" x 4'8"	55 sq. ft	No
10	Dining Area	10'11" x 13'10"	152 sq. ft	Yes
11	Living Room	17'5" x 12'4"	222 sq. ft	Yes
12	Hall	7'5" x 9'1"	45 sq. ft	Yes
13	Patio	13'3" x 10'1"	133 sq. ft	No

2513 Fairway Drive Southwest, Raleigh Court, Roanoke, Roanoke, Virginia, United States, 24015



Room Dimensions

Floor 3

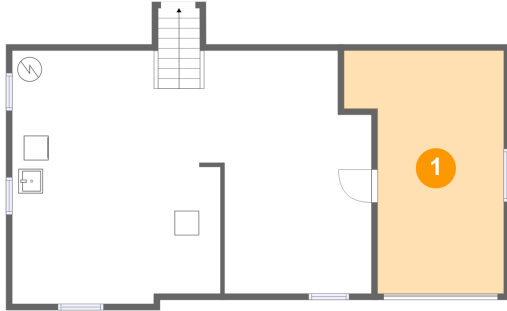
Total sqft: 580

Living area: 329

#	Room name	Dimensions	Area (sqft)	Counted as Living Area
14	Bedroom	11'3" x 12'4"	110 sq. ft	Yes
15	Attic	3'5" x 17'2"	59 sq. ft	No
16	Finished Attic	11'3" x 23'2"	164 sq. ft	Yes
17	Bath	7'6" x 7'1"	33 sq. ft	Yes
18	Attic	3'1" x 15'5"	48 sq. ft	No

2513 Fairway Drive Southwest, Raleigh Court, Roanoke, Roanoke, Virginia, United States, 24015

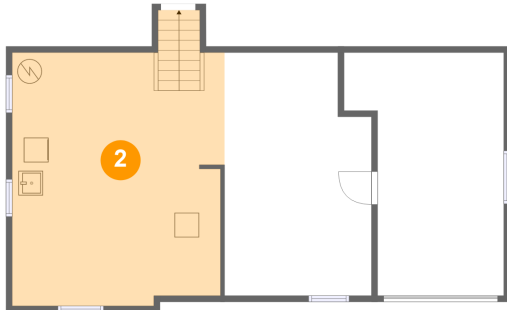
1 Floor 1 - Garage



Dimensions: 13'1" x 19'11"
Area: 219 sq. ft
Counted as Living Area: No

Heated: No
Finished: No
Enclosed: Yes
Contiguous: Yes
Permitted: Yes
Wet Space: No
Addition: No
Conversion: No

2 Floor 1 - Utility

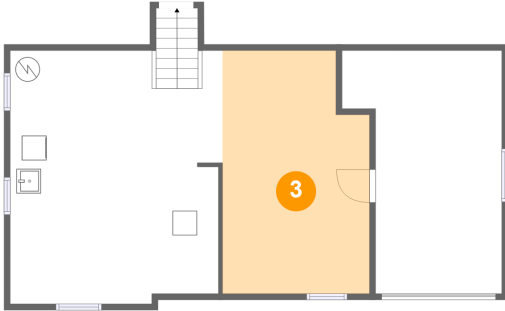


Dimensions: 17'5" x 20'9"
Area: 363 sq. ft
Counted as Living Area: No

Heated: Yes
Finished: No
Enclosed: Yes
Contiguous: Yes
Permitted: Yes
Wet Space: No
Addition: No
Conversion: No

2513 Fairway Drive Southwest, Raleigh Court, Roanoke, Roanoke, Virginia, United States, 24015

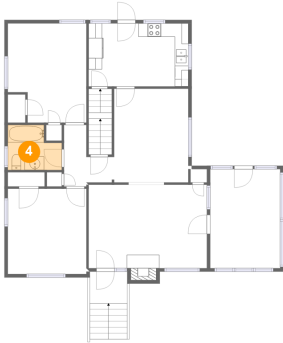
3 Floor 1 - Basement



Dimensions: 12'0" x 19'11"
Area: 225 sq. ft
Counted as Living Area: No

Heated: Yes
Finished: Yes
Enclosed: Yes
Contiguous: Yes
Permitted: Yes
Wet Space: No
Addition: No
Conversion: No

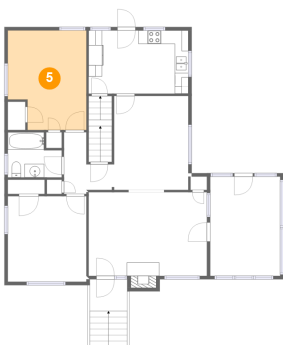
4 Floor 2 - Bath



Dimensions: 8'0" x 6'8"
Area: 46 sq. ft
Counted as Living Area:
Yes

Heated: Yes
Finished: Yes
Enclosed: Yes
Contiguous:
Yes
Permitted: Yes
Wet Space: Yes
Addition: No
Conversion: No

5 Floor 2 - Bedroom

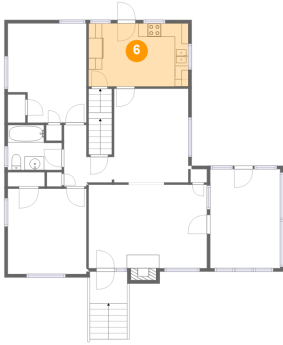


Dimensions: 11'7" x 14'8"
Area: 157 sq. ft
Counted as Living Area:
Yes

Heated: Yes
Finished: Yes
Enclosed: Yes
Contiguous:
Yes
Permitted: Yes
Wet Space: No
Addition: No
Conversion: No

2513 Fairway Drive Southwest, Raleigh Court, Roanoke, Roanoke, Virginia, United States, 24015

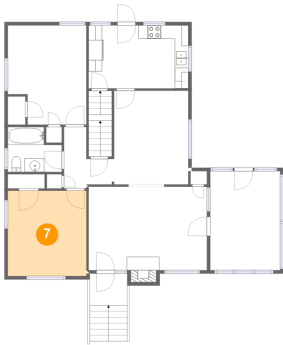
6 Floor 2 - Kitchen



Dimensions: 14'9" x 9'4"
Area: 137 sq. ft
Counted as Living Area:
Yes

Heated: Yes
Finished: Yes
Enclosed: Yes
Contiguous:
Yes
Permitted: Yes
Wet Space: No
Addition: No
Conversion: No

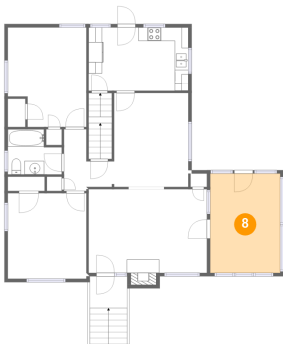
7 Floor 2 - Bedroom



Dimensions: 11'7" x 12'7"
Area: 146 sq. ft
Counted as Living Area:
Yes

Heated: Yes
Finished: Yes
Enclosed: Yes
Contiguous:
Yes
Permitted: Yes
Wet Space: No
Addition: No
Conversion: No

8 Floor 2 - Screened Porch

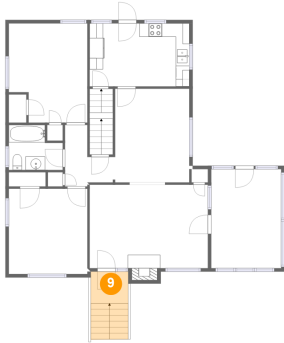


Dimensions: 10'4" x 14'7"
Area: 151 sq. ft
Counted as Living Area: No

Heated: No
Finished: Yes
Enclosed: No
Contiguous: Yes
Permitted: Yes
Wet Space: No
Addition: No
Conversion: No

2513 Fairway Drive Southwest, Raleigh Court, Roanoke, Roanoke, Virginia, United States, 24015

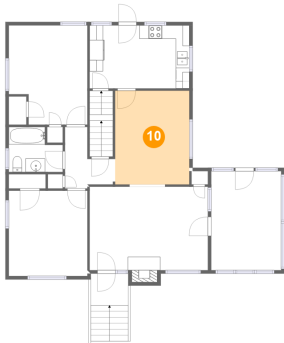
9 Floor 2 - Porch



Dimensions: 5'6" x 4'8"
Area: 55 sq. ft
Counted as Living Area: No

Heated: No
Finished: Yes
Enclosed: No
Contiguous: Yes
Permitted: Yes
Wet Space: No
Addition: No
Conversion: No

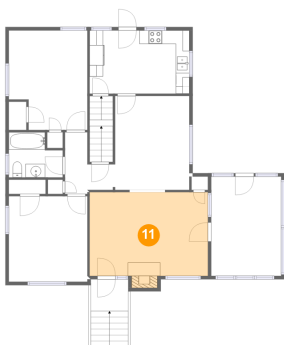
10 Floor 2 - Dining Area



Dimensions: 10'11" x 13'10"
Area: 152 sq. ft
Counted as Living Area:
Yes

Heated: Yes
Finished: Yes
Enclosed: Yes
Contiguous:
Yes
Permitted: Yes
Wet Space: No
Addition: No
Conversion: No

11 Floor 2 - Living Room

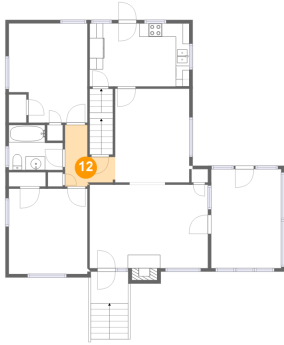


Dimensions: 17'5" x 12'4"
Area: 222 sq. ft
Counted as Living Area:
Yes

Heated: Yes
Finished: Yes
Enclosed: Yes
Contiguous:
Yes
Permitted: Yes
Wet Space: No
Addition: No
Conversion: No

2513 Fairway Drive Southwest, Raleigh Court, Roanoke, Roanoke, Virginia, United States, 24015

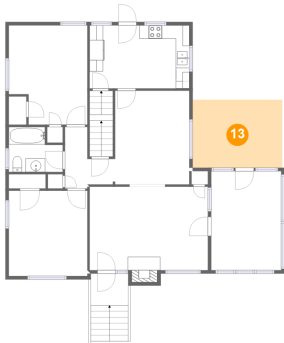
12 Floor 2 - Hall



Dimensions: 7'5" x 9'1"
Area: 45 sq. ft
Counted as Living Area:
Yes

Heated: Yes
Finished: Yes
Enclosed: Yes
Contiguous:
Yes
Permitted: Yes
Wet Space: No
Addition: No
Conversion: No

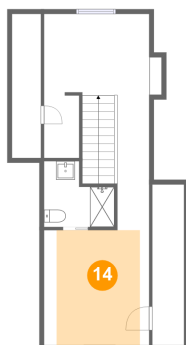
13 Floor 2 - Patio



Dimensions: 13'3" x 10'1"
Area: 133 sq. ft
Counted as Living Area: No

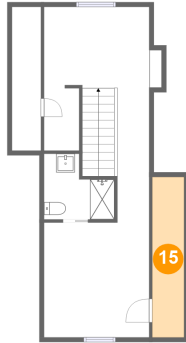
Heated: No
Finished: Yes
Enclosed: No
Contiguous: Yes
Permitted: Yes
Wet Space: No
Addition: No
Conversion: No

14 Floor 3 - Bedroom



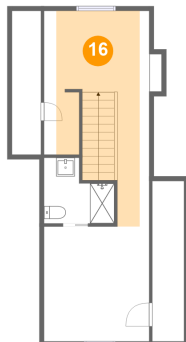
Dimensions: 11'3" x 12'4"
Area: 110 sq. ft
Counted as Living Area:
Yes

Heated: Yes
Finished: Yes
Enclosed: Yes
Contiguous:
Yes
Permitted: Yes
Wet Space: No
Addition: No
Conversion: No

**2513 Fairway Drive Southwest, Raleigh Court,
Roanoke, Roanoke, Virginia, United States, 24015****15 Floor 3 - Attic**

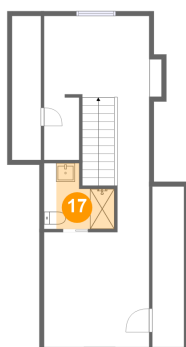
Dimensions: 3'5" x 17'2"
Area: 59 sq. ft
Counted as Living Area: No

Heated: No
Finished: No
Enclosed: Yes
Contiguous: Yes
Permitted: Yes
Wet Space: No
Addition: No
Conversion: No

16 Floor 3 - Finished Attic

Dimensions: 11'3" x 23'2"
Area: 164 sq. ft
Counted as Living Area:
Yes

Heated: Yes
Finished: Yes
Enclosed: Yes
Contiguous:
Yes
Permitted: Yes
Wet Space: No
Addition: No
Conversion: No

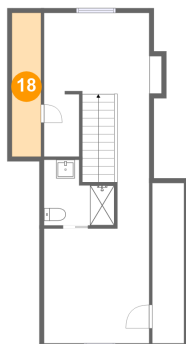
17 Floor 3 - Bath

Dimensions: 7'6" x 7'1"
Area: 33 sq. ft
Counted as Living Area:
Yes

Heated: Yes
Finished: Yes
Enclosed: Yes
Contiguous:
Yes
Permitted: Yes
Wet Space: Yes
Addition: No
Conversion: No

**2513 Fairway Drive Southwest, Raleigh Court,
Roanoke, Roanoke, Virginia, United States, 24015**

18 Floor 3 - Attic



Dimensions: 3'1" x 15'5"
Area: 48 sq. ft
Counted as Living Area: No

Heated: No
Finished: No
Enclosed: Yes
Contiguous: Yes
Permitted: Yes
Wet Space: No
Addition: No
Conversion: No